

## Product datasheet for MR227226

### Pcdh15 (NM\_001142746) Mouse Tagged ORF Clone

#### Product data:

Product Type:	Expression Plasmids
Product Name:	Pcdh15 (NM_001142746) Mouse Tagged ORF Clone
Tag:	Myc-DDK
Symbol:	Pcdh15
Synonyms:	av; BB078305; ENSMUSG00000046980; Gm9815; nmf19; roda; Ush1f
Vector:	pCMV6-Entry (PS100001)
E. coli Selection:	Kanamycin (25 ug/mL)
Cell Selection:	Neomycin
ORF Nucleotide Sequence:	>MR227226 representing NM_001142746 Red=Cloning site Blue=ORF Green=Tags(s)

TTTTGTAATACGACTCACTATAGGGCGGCCGGAATTCGTCGACTGGATCCGGTACCGAGGAGATCTGCC  
GCC**CGGATCGCC**

ATGTTCTACAGTTTGTCTGGAAGTGTACCCCATGGGATCCTCATTGCCTCTCTCTTGGTAGTCA  
GCTGGGGCCAGTATGACGATGACTGGCAATACGAGGATTGCAAACAGCTAGGGGAGGACCACCAGCTAC  
TATCGTGGCCATTGATGAAGAGAGTCGAAACGGTACAATTCTGGTGGATAACATGTTGATTAAGGGGACT  
GCCGGAGGACCAGACCCACCATAGAGCTCTTTAAAGGACAACGTGGACTACTGGGTGTGTGGACC  
CCGTTAAACAGATGCTTTTCTGAACAGTACCGGAAGAGTTCTGGATAGAGACCCACCAATGAACATACA  
CTCCATTGTGGTCAAGTCCAGTGTGTCAACAAGAAGGTTGGCACAGTTATCTATCATGAAGTACGCATC  
GTGGTGCAGATCGGAATGACAACTCCCCACATTCAAGCATGAAAGCTACTATGCCACCGTGAATGAGC  
TCACTCCAGTTGGCACCACGATATTCACGGGTTCTCGGGAGACAATGGAGCTACAGACATAGACGATGG  
CCCTAATGGACAGATAGAATACGTGATTCACTACAACCCAGAAGATCCGACATCCAACGACACCTTTGAA  
ATTCCACTCATGCTGACTGGCAACGTGGTACTGAGGAAAAGACTCAACTATGAGGATAAGACTCCCTACT  
ATGTCATCATCCAAGCAAATGACCGTGCACAAAATCTGAATGAGAGGCGAACAACCACCACCCCTCAC  
AGTAGATGTTCTAGATGGAGATGACCTGGGACCTATGTTTCTGCCTTGTTCTTGTGCCAAACACACGT  
GACTGTGCTCCACTCACCTACCAAGCTGCCATTCTGAACTGAGGACTCCGGAAGAAGTGAACCTATTT  
TGGTGACACCACCTATCCAAGCCATTGATCAGGACCGAAACATCCAACCACCTCTGATCGACCTGGCAT  
CCTCTACTCCATCCTTGTGCGCACCCCTGAGGATTACCCCGCTTCTTCCATATGCATCCAGGACTGCA  
GAACTCACTCTCCTGGAGCCAGTAAACAGAGACTTCCATCAAAAATTTGATTTGGTTATTAAGGCTGAGC  
AGGACAATGGCCACCCACTTCTGCCTTTGCTAGTCTGCACATCGAAATACTAGACGAAAACAATCAGAG  
TCCATACTTACAATGCCAGCTATCAAGGATACATCCTGGAATCCGCCAGTGGGAGCCACCATTCT  
GAGAGCCTAAACTTAACCACTCCTCTGAGAATTGTAGCTCTGGACAAAGACATAGAAGACACAAAAGATC  
CAGAGCTCCACCTTCTCCTGAATGACTACACCTCGGTCTTCACTGTGACACCCACTGGTATCACCCGCTA  
CCTCACCTGCTTCAACCTGTGGACAGGGAGGAACAGCAAACCTACACCTTTCTGATAACAGCGTTTGT  
GGCGTGCAAGAAAGTGAAGCCAGTCGTGGTCAATATCCGAGTGTGGATGCAAATGATAACAGCCACCT



[View online >](#)

TCCCTGAAATCTCCTATGATGTCTATGTTTACACAGACATGAGTCTGGGGACAGCGTCATTCAGCTGAC  
 AGCGGTAGATGCTGATGAAGGCTCTAATGGGGAGATCTCCTATGAAATACTGGTGGGGGCAAGGGAGAC  
 TTCGTGATCAACAAGACCACAGGGCTGGTGAAGCATTGCACCAGGCGTGGAGCTGATCGTGGGACAGACGT  
 ATGCGCTCACAGTGCAGGCTTCGGACAACGCCCGCTGCAGAAAGAAGGCACTCCATCTGCACAGTGA  
 CATCGAGGTGCTTCTCCTAACAAACCAGAGCCCTCCCCGCTTCCCGCAGCTGATGTACAGTCTGGAAGTC  
 AGCGAGGCCATGAGGATCGGTGCTATTTTATTAATCTACAGGCAACTGATCGAGAGGGAGATCCAATCA  
 CATATGCCATCGAGAATGGAGACCTCAGAGAGTTTTTAACTTTTCAGAAACCACAGGGATTCTCAGCCT  
 AGGGAAGGCTCTAGACCCGAGAGCACAGACCGCTACATCCTCATCGTCACAGCCTCAGATGGCAGACCG  
 GATGGAACCTCAACTGCCACTGTGAACATAGTGGTGACGGACGTCAATGACAACGCTCCCGTGTTCGATC  
 CCTATCTGCCAGGAACCTCTCTGTGGTGGAGGAAGAAGCCAATGCCTTTGTGGGTCAAGTCCGGGCAAC  
 AGACCCAGATGCTGGGATAAACGGCCAAGTTCCTACAGCCTGGGGAACCTCAACAACCTTCCGCATC  
 ACATCCAACGGGAGCATTACACAGCCGTGAAGCTGAACAGGGAAGCCAGGGACCACTATGAACTGGTTG  
 TCGTGGCAACAGATGGAGCAGTCCACCCTCGACATTCAACTCTGACACTGTACATCAAGGTGTTGGACAT  
 TGATGATAACAGTCTGTTTTTACCAATCAACGTACACAGTGTGCGTTGAAGAGAACTGCCAGCCGGG  
 ACCTCCTTTCTCAAATAGAGGCCAAGGATGTTGACCTTGAGGCCAATGTGTCATATCGGATCAGAAACC  
 CAGAAGTGAAACACCTTTTTGCACTGCATCCATCACTGGAGAATTGTCTCTTCTGAGGAGTTTGGATTA  
 TGAGGCCCTTCCGGACCAGGAGGCAAGCATCACATTCTTGGTGGAGGCCCTTGGACATTTATGGGACTATG  
 CCACCTGGTATAGCAACAGTCAAGGTAATTGTGAAGGACATGAATGACTACCTCCAGTGTTTAGCAAAC  
 GCATCTACAAGGGGATGGTGGCTCCAGATGCAGTCAAGGGGACACCAATCACCACCGTTTATGCTGAAGA  
 TGCGGACCCACCTGGGATGCCTGCAAGTAGGGTGAAGTATCGAGTGGACGACGTGCGATTTCCATACCCA  
 GCCAGTATTTTGTAGTAGGAAGATTCTGGAAGAGTAGTAACCCGCGTCAATCTAATGAAGAGCCTA  
 CTACGATTTTCAAGCTGGTGGTGTGGCTTTTGTGATGACGGCGAACCTGTGATGTCCAGCAGTCCACGGT  
 GAGAATTTCTGTCTTACATCCTGGAGAGATCCCACGCTTACCCAAAGAGGAATACAGACCTCCTCCTGTA  
 AGTGAGCTTGCAGCCAGAGGACTGTAGTTGGTGTCAATTTCTGCTGCTGCCATTAATCAGAGCATCGTGT  
 ACTCCATTGTGGCAGGAAATGAGGAAGCAAGTTTGAATCAACAATGTCACTGGGGTCACTATGTGAA  
 TTCACCATTGGATTACGAGACAAGGACCAGCTATGTGCTCCGGTACAAGCAGATTCTCTGGAAGTGGTC  
 CTTGCCAATCTCCGAGTCCCTTCAAAAAGCAATACAGCTAAGGTGTACATTGAGATTGAGGATGAAAACG  
 ATCACCCCCAGTGTCCAGAAGAAATCTACATTGGAGGTGTGCTGAAGACGCAAGGATGTTCCGCATC  
 TGTGCTCAGAGTGAAGGCCACCGACAGGGACACGGTAATTACAGTGCCATGGCCTACCGGCTCATCATA  
 CCGCCGATTAAGAGGGCAAAGAGGGTTTGTGGTGGAAACATACACAGGTCTCATCAAGACAGCCATGC  
 TCTTCCACAATATGAGAAGATCCTACTTCAAGTTTCAAGTGATTGCAACTGACGACTACGGGAAGGGTT  
 GAGCGGAAAGCAGACGTAAGTGTCTCCGTGGTCAATCAACTGGATATGCAGGTCAATGTCTCCAATGTG  
 CCCCTACACTAGTGAAAGAAGATAGAAGACCTTACAGAGATTTTGGATCGCTACGTTACAGGAGCAAA  
 TTCTGTGGTCCAAGGTTGTGGTGGAGTCCATAGGTGCCCGTCCGATGGAGACGCCTACTCCCTAGAAGA  
 CTATAGCAAGTGCACCTGACTGTCTATGCCATCGACCCGACACCAACAGAGCCATCGACAGAAATGAG  
 CTTTTAAGTTCCTGGACGGCAACTGCTCGATATCAATAAAGACTTCCAGCCGATTACGGGGAAGGAG  
 GGCGCATTCTGGAGATTCGGACACCTGAGGCAGTGACGAGCATCAAGAAGCGAGGAGAAAGCTTGGGGTA  
 CACAGAAGGGGCTTGTGGCCTTGGCCTTTCATCATCCTCTGTTGCATCCAGCCATCTTGGTCTGCT  
 TTAGTAAGCTACCGACAGTTTAAAGTACGCCAGGCTGAGTGACGAAAGCCGCAAGAATTCAGTCTGCTA  
 TGCTGCAGCCAAGCCTGCAGTCTGTACCAGCTGCGCCTGCGCCGCCCCGCCACCACCACC  
 ACCAGGAGCACAATCTCTATGAAGAAGTGGAGAGAGCGCAATGCATAAGTATGAGATGCCCCAGTATGGA  
 AGTCCGCTGCACTGCTGCCACCTGCTGGACAGGAGGAATACGGCGAAGTATTGGTGAAGTGAAGAGG  
 AATATGAAGAAGAAGAGTGGGCAAGAAAAGAATGATCAAGTTGGTGGTGCATCGGGAGTATGAGAGCAG  
 CTCACCTGGGGAAGACAGCGCTCCTGAGTGCAGAGAAGCAGAACTCACAAGCCAGTGGCCGACGCAAT  
 GTCAACGGCAACATCTACATTGCGCAGAATGGTCCGTGGTGAAGAACACGCCGTGCCTGCGTGCCTGATA  
 ACTTGAAGGTGCCCTCCCCTGGGTTGCTGGGAGGCATCTGAAGAAATTAGACACATTGGCAGGGACAG  
 TGAAGAGAATGTCCCTGAACACACTGTTCAAGGGCCATTTCCACAGAGAAAGCGAAAAGAACCCCA  
 ACTCTGGTCAAGTTTCCCGCTGCCCGTGGTGGCTGAGCACTCGGCAGTGAAGCCATCAGGGACAGGC  
 TGAAACACACAGCTGAGCAGGAGTCCATGGTAGACAGTAGGCTCTCCAGAGAGTCCATGGAATCCACGG  
 TGACAGCGGCCATCAGATGAGGAGGAGCTCTGGATGGTCCGTGGAACAGCCTCCACATACCAATGACA  
 AACTC

ACGCGTACGCGGCCGCTCGAGCAGAAACTCATCTCAGAAGAGGATCTGGCAGCAAATGATATCCTGGATT  
ACAAGGATGACGACGATAAGGTTTAA

Protein Sequence:

>MR227226 representing NM\_001142746  
Red=Cloning site Green=Tags(s)

MFLQFAVWKCLPHGILIASLLVVSWGQYDDDWQYEDCKLARGGPPATIVAIDEESRNGTILVDNMLIKGT  
AGGPDPTIELSLKDNVDYWLLDPVKQMLFLNSTGRVLRDPPMNIHSIVVQVQCYNKKVGTVIYHEVRI  
VVRDRNDNSPTFKHESYATVNELTPVGTTFITGFSGDNGATDIDDGPNQIEYVIQYNPEDPTSNDTFE  
IPLMLTGNVVLKRLNLYEDKTRYVYIIQANDRAQNLNERRTTTTLTVDVLGDGDLGPMFLPCVLPNTR  
DCRPLTYQAAIPELRTPEELNPILVTPPIQAIDQDRNIQPPSDRPGILYSILVGTPEYPRFFHMHPRTA  
ELTLLEPVNRDFHQKFDLVIAEQDNGHPLPAFASLHIEILDENNQSPYFTMPSYQGYILESAPVGATIS  
ESLNLTTPLRIVALDKDIEDTKDPELHLFLNDYTSVFTVTPTGITRYLTLQPVDRREEQQTYTFLITAFD  
GVQSEPVVVNIRVMDANDNTPFPEISYDVVYVYTDMPGDSVIQLTAVDADEGSNGEISYEILVGGKGD  
FVINKTTGLVSIAPGVELIVGQTYALTVAQSNAPPAERRHSICTVYIEVLPPNNQSPRPFQLMYSLEV  
SEAMRIGAILLNLQATDREGDPIYAIENGDPQRFVNLSETTGILSLGKALDRESTDRYILIVTASDGRP  
DGTSTATVNIIVTDVNDNAPVFDPYLPRNLSVVEEENAFVGVQVRATDPDAGINGQVHSLGNFNLFRI  
TSNGSIYAVKLNREARDHYELVVVATDGAVHPRHSTLTLYIKVLDIDDNSPVFTNSTYTVVVEENLPAG  
TSFLQIEAKDVLGANVSYRISPEVKHLFALHPFTGELSLRSLDYEAFPDQEASITFLVEAFDIYGTM  
PPGIATVTVIVKDMNDYPPVFSKRIYKGMVAPDAVKGTPITTVYAEADPPGMPASRVRYRVDVQFPYP  
ASIFDVEEDSGRVVTRVNLNEEPTTIFKLVVVAFDDGEPVMSSSATVRILVHPGEIPRFTQEEYRPPPV  
SELAARGTVVGVISAAAINQSIYVSIYAGNEEDKFGINNVTVGIYVNSPLDYETRTSYVLRVQADSLEVV  
LANLRVPSKSNKAVYIEIQDENHPPVFQKQFYIGGVSEDAFMFASVLRVKATDRDTGNYSAMAYRLII  
PPIKEGKEGFVYETYTGLIKTAMLFHNMRRSYFKFQVIATDDYKGLSGKADVLVSVVNQLDMQVIVSNV  
PPTLVEKKIEDLTEILDYVQEIPGAKVVVESIGARRHGDAYSLEDYSKCDLTVYAIQDPTNRAIDRNE  
LFKFLDGKLLDINKDFQPYGEGGRILEIRTPEAVTSIKKRGESLGYTEGALLALAFIIILCCIPAILVV  
LVSYRQFKVRQAECTKTARIQSAMPAKPAAPVPAAPAPPPPPPPPPGAHLYEELGESAMHKYEMPQYG  
SRRRLPPAGQEEYGEVIGEAEEEEEEEEWARKRMIKLVVDREYESSSPGEDSAPESQRSRTHKPSGRSN  
VNGNIYIAQNGSVVRRACVADNLKVPSPGLLGRHLKLDLTLAGTREENVPLNTLFGKPFSTEKAKRTP  
TLVTFAPCPVVAEHSVAVKPSGTRLKHTAEQESMVDSSRLSRESMEFHGDSAPSDEEELWMPWNLSLHIPMT  
KL

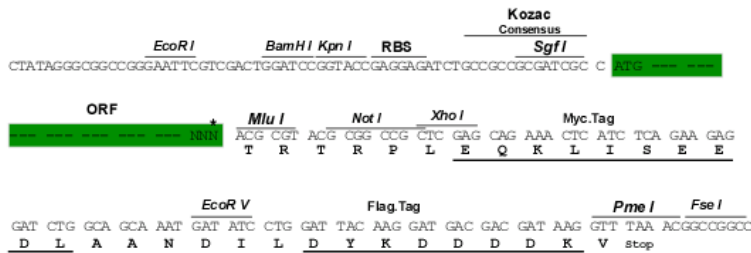
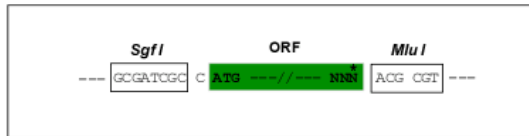
TRTRPLEQKLISEEDLAANDILDYKDDDDKV

Restriction Sites:

SgfI-MluI

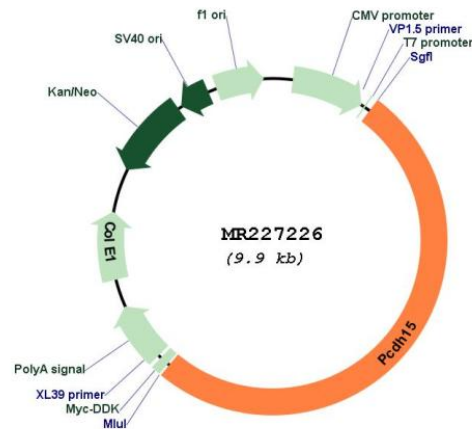
Cloning Scheme:

Cloning sites used for ORF Shuttling:



\* The last codon before the Stop codon of the ORF

Plasmid Map:



ACCN: NM\_001142746

ORF Size: 5046 bp

OTI Disclaimer: The molecular sequence of this clone aligns with the gene accession number as a point of reference only. However, individual transcript sequences of the same gene can differ through naturally occurring variations (e.g. polymorphisms), each with its own valid existence. This clone is substantially in agreement with the reference, but a complete review of all prevailing variants is recommended prior to use. [More info](#)

OTI Annotation: This clone was engineered to express the complete ORF with an expression tag. Expression varies depending on the nature of the gene.

<b>Components:</b>	The ORF clone is ion-exchange column purified and shipped in a 2D barcoded Matrix tube containing 10ug of transfection-ready, dried plasmid DNA (reconstitute with 100 ul of water).
<b>Reconstitution Method:</b>	<ol style="list-style-type: none"><li>1. Centrifuge at 5,000xg for 5min.</li><li>2. Carefully open the tube and add 100ul of sterile water to dissolve the DNA.</li><li>3. Close the tube and incubate for 10 minutes at room temperature.</li><li>4. Briefly vortex the tube and then do a quick spin (less than 5000xg) to concentrate the liquid at the bottom.</li><li>5. Store the suspended plasmid at -20°C. The DNA is stable for at least one year from date of shipping when stored at -20°C.</li></ol>
<b>RefSeq:</b>	<u><a href="#">NM_001142746.1</a></u> , <u><a href="#">NP_001136218.1</a></u>
<b>RefSeq Size:</b>	9150 bp
<b>RefSeq ORF:</b>	5049 bp
<b>Locus ID:</b>	11994
<b>UniProt ID:</b>	<u><a href="#">Q99PJ1</a></u>
<b>Cytogenetics:</b>	10 37.43 cM
<b>MW:</b>	187 kDa
<b>Gene Summary:</b>	Calcium-dependent cell-adhesion protein. Required for inner ear neuroepithelial cell elaboration and cochlear function. Probably involved in the maintenance of normal retinal function.[UniProtKB/Swiss-Prot Function]