

## Product datasheet for MR227212

### Pcdh15 (NM\_001142743) Mouse Tagged ORF Clone

#### Product data:

Product Type:	Expression Plasmids
Product Name:	Pcdh15 (NM_001142743) Mouse Tagged ORF Clone
Tag:	Myc-DDK
Symbol:	Pcdh15
Synonyms:	av; BB078305; ENSMUSG00000046980; Gm9815; nmf19; roda; Ush1f
Vector:	pCMV6-Entry (PS100001)
E. coli Selection:	Kanamycin (25 ug/mL)
Cell Selection:	Neomycin
ORF Nucleotide Sequence:	>MR227212 representing NM_001142743 Red=Cloning site Blue=ORF Green=Tags(s)

TTTTGTAATACGACTCACTATAGGGCGCCGGAATTCGTCGACTGGATCCGGTACCGAGGAGATCTGCC  
GCCGCGATCGCC

ATGTTCTACAGTTTGCTGTCTGGAAGTGTACCCCATGGGATCCTCATTGCCTCTCTCTTGGTAGTCA  
GCTGGGGCCAGTATGACGATGATTGCAAAGTACTAGGGGAGGACCACCAGCTACTATCGTGCCATTGA  
TGAAGAGAGTCGAAACGGTACAATTCTGGTGGATAACATGTTGATTAAGGGGACTGCCGGAGGACCAGAC  
CCCACCATAGAGCTCTCTTTAAAGGACAACGTGGACTACTGGGTGTTGCTGGACCCGTTAAACAGATGC  
TTTTCTGAACAGTACCGGAAGAGTTCTGGATAGAGACCCACCAATGAACATACACTCCATTGTGGTGCA  
AGTCCAGTGTGTCAACAAGAAGTTGGCACAGTTATCTATCATGAAGTACGCATCGTGGTGGGAGATCGG  
AATGACAACTCCCCACATTCAAGCATGAAAGCTACTATGCCACCGTGAATGAGCTCACTCCAGTTGGCA  
CCACGATATTCACGGGGTTCTCGGGAGACAATGGAGCTACAGACATAGACGATGGCCCTAATGGACAGAT  
AGAATACGTGATTCAGTACAACCCAGAAGATCCGACATCCAACGACACCTTTGAAATCCACTCATGCTG  
ACTGGCAACGTGGTACTGAGGAAAAGACTCAACTATGAGGATAAGACTCGCTACTATGTCATCATCCAAG  
CAAATGACCGTGCACAAAATCTGAATGAGAGGCGAACAACCACCACCCTCACAGTAGATGTTCTAGA  
TGGAGATGACCTGGGACCTATGTTTCTGCCTTGTGTTCTTGTGCCAAACACACGTGACTGTCGTCCACTC  
ACCTACCAAGCTGCCATTCTGAACTGAGGACTCCGGAAGAAGTGAACCTATTTTGGTGACACCACCTA  
TCCAAGCCATTGATCAGGACCGAAAACATCCAACCACCTCTGATCGACCTGGCATCCTCTACTCCATCCT  
TGTCGGCACCCCTGAGGATTACCCCGCTTCTTCCATATGCATCCAGGACTGCAGAACTCACTCTCCTG  
GAGCCAGTAAACAGAGACTTCCATCAAAAATTTGATTTGGTTATTAAGGCTGAGCAGGACAATGGCCACC  
CACTTCTGCCTTTGCTAGTCTGCACATCGAAATACTAGACGAAAACAATCAGAGTCCATACTTCACAAT  
GCCAGCTATCAAGGATACATCCTGGAATCCGCCAGTGGGAGCCACCATTTCTGAGAGCTAACTTA  
ACCACTCCTCTGAGAATTGTAGCTCTGGACAAAGACATAGAAGACACAAAAGATCCAGAGCTCCACCTCT  
TCTGAAATGACTACACCTCGGTCTTCACTGTGACACCCACTGGTATCACCCGCTAGCTCACCTGCTTCA  
ACCTGTGGACAGGGAGGAACAGCAAACCTACACCTTTCTGATAACAGCGTTTGTGGCGTGCAAGAAAGT  
GAGCCAGTCGTGGTCAATATCCGAGTGTGGATGCAAAATGATAACACGCCACCTTCCCTGAAATCTCCT



[View online »](#)

ATGATGTCTATGTTTACACAGACATGAGTCTGGGGACAGCGTCATTCAGCTGACAGCGGTAGATGCTGA  
TGAAGGCTCTAATGGGGAGATCTCCTATGAAATACTGGTGGGGGCAAGGGAGACTTCGTGATCAACAAG  
ACCACAGGGCTGGTGAGCATTGCACCAGGCGTGGAGCTGATCGTGGGACAGACGTATGCGCTCACAGTGC  
AGGCTTCGGACAACGCCCCGCTGCAGAAAAGAGGCACTCCATCTGCACAGTGTACATCGAGGTGCTTCC  
TCCTAACAAACCAGAGCCCTCCCCGCTTCCCGCAGCTGATGTACAGTCTGGAAGTCAGCGAGGCCATGAGG  
ATCGGTGCTATTTTATTAATCTACAGGCAACTGATCGAGAGGGAGATCCAATCACATATGCCATCGAGA  
ATGGAGACCCTCAGAGAGTTTTTAACTCTTCAGAAAACCACAGGGATTCTCAGCCTAGGGAAGGCTCTAGA  
CCGCGAGAGCACAGACCGCTACATCCTCATCGTACAGCCTCAGATGGCAGACCGGATGGAACCTCAACT  
GCCACTGTGAACATAGTGGTGACGGACGTCAATGACAACGCTCCCGTGTTGATCCCTATCTGCCAGGA  
ACCTCTCTGTGGTGGAGGAAGAAGCCAATGCCTTTGTGGGTCAAGTCCGGGCAACAGACCCAGATGCTGG  
GATAAACGGCCAAGTTCCTACAGCCTGGGGAACCTCAACAACCTCTTCCGCATCACATCCAACGGGAGC  
ATTTACACAGCCGTGAAGCTGAACAGGGAAGCCAGGGACCACTATGAACTGGTTGCTGGCAACAGATG  
GAGCAGTCCACCCTCGACATTCAACTCTGACACTGTACATCAAGGTGTTGGACATTGATGATAACAGTCC  
TGTTTTTACCAATTCAACGTACACAGTTGCTGTTGAAGAGAATCTGCCAGCCGGGACCTCCTTTCTCAA  
ATAGAGGCCAAGGATGTTGACCTTGAGCCAATGTGCATATCGGATCAGAAGCCAGAAGTGAACACC  
TTTTTGCACTGCATCCATTCAGTGGAGAATTGTCTCTTCTGAGGAGTTTGGATTATGAGGCCCTTCCGGA  
CCAGGAGGCAAGCATCACATTCTTGGTGGAGGCCCTTGGACATTTATGGGACTATGCCACCTGGTATAGCA  
ACAGTCACGGTAATTGTGAAGGACATGAATGACTACCCTCCAGTGTTAGCAAACGCATCTACAAGGGGA  
TGGTGGCTCCAGATGCAGTCAAGGGGACACCAATCACCACCGTTTATGCTGAAGATGCGGACCCACCTGG  
GATGCCTGCAAGTAGGGTGAAGTATCGAGTGGACGACGTGCAGTTTCCATACCCAGCCAGTATTTTTGAT  
GTAGAGGAAGATTCTGGAAGAGTAGTAACCCGCGTCAATCTTAATGAAGAGCCTACTACGATTTTCAAGC  
TGGTGGTTGTGGCTTTTGTGACGGCGAACCTGTGATGTCCAGCAGTGCCACGGTGAAGTCTTGTCTT  
ACATCCTGGAGAGATCCCACGCTTCACCCAAGAGGAATACAGACCTCCTCTGTAAGTGAAGTCTGGCC  
AGAGGGACTGTAGTTGGTGTCTTTCTGCTGCTGCCATTAATCAGAGCATCGTGTACTCCATTGTGGCAG  
GAAATGAGGAAGACAAGTTTGAATCAACAATGTCACTGGGGTCACTATGTGAATTCACCATTTGGATTA  
CGAGACAAGGACCAGCTATGTGCTCCGGGTACAAGCAGATTCTCTGGAAGTGGTCTTGGCAATCTCCGA  
GTCCCTTCAAAAAGCAATACAGCTAAGGTGTACATTGAGATTGAGGATGAAAACGATCACCCCCAGTGT  
TCCAGAAGAAATCTACATTGGAGGTGTGTCTGAAGACGCAAGGATGTTCCGATCTGTGCTCAGAGTGAA  
GGCCACCAGACAGGGACACGGTAATTACAGTGCCATGGCTACCAGGCTCATCATACCCGCGATTAAGAG  
GGCAAAGAGGGGTTTGTGGTGGAAACATACACAGGTCTCATCAAGACAGCCATGCTTCCACAATATGA  
GAAGATCTACTTCAAGTTTCAAGTGATTGCAACTGACGACTACGGGAAGGGTTGAGCGGAAAGCAGA  
CGTACTGGTCTCCGTGGTCAATCAACTGGATATGCAGGTATTGTCTCCAATGTGCCCCCTACACTAGTG  
GAAAAGAAGATAGAAGACCTTACAGAGATTTTGGATCGCTACGTTCCAGGAGCAAATTCCTGGTGCCAAGG  
TTGTGGTGGAGTCCATAGGTGCCCGTCCGATGGAGACGCCTACTCCCTAGAAGACTATAGCAAGTGCGA  
CCTGACTGTCTATGCCATCGACCCGACAGCAACAGAGCCATCGACAGAAATGAGCTTTTAAAGTTCTG  
GACGGCAAACCTGCTCGATATCAATAAAGACTTCCAGCCGATTACGGGGAAGGAGGGCGCATTCTGGAGA  
TTCGGACACCTGAGGCAGTGACGAGCATCAAGAAGCGAGGAGAAAGCTTGGGGTACACAGAAGGGGCCTT  
GCTGGCCTTGGCCTTATCATCATCTCTGTGTCATCCAGCCATCTTGGTGTCTTAGTAAAGTACCGA  
CAGTTTAAAGTACGCCAGGCTGAGTGCACGAAGACCGCAAGAATTCAGTCTGCTATGCCTGCAGCCAAGC  
CTGCAGTCTCTGTACCAGTGCAGCTGCGCCGCCCCGCCCCGCCACCACCACCAGGAGCACATCT  
CTATGAAGAACTGGGAGAGAGCGCAATGCATAAGAGTTATCCATGGAATCTGGGATTGATCCTGGCCAGG  
AATATGGACAAGATTATTACAGTTATGAGCATGGGTATGAGATGCCCCAGTATGGAAGTCCGCGTGGACT  
GCTGCCACCTGCTGGACAGGAGGAATACGGCGAAGTCAATTGGTGAAGCTGAAGAGGAATATGAAGAAGAA  
GAGG

ACGCGTACGCGGCCGCTCGAGCAGAAACTCATCTCAGAAGAGGATCTGGCAGCAAATGATATCCTGGATT  
ACAAGGATGACGACGATAAGGTTTAA

**Protein Sequence:** >MR227212 representing NM\_001142743  
 Red=Cloning site Green=Tags(s)

MFLQFAVWKCLPHGILIASLLVSWGQYDDDCKLARGPPATIVAIDEESRNGTILVDNMLIKGTAGGPD  
 PTIELSLKDNVDYVLLDPVKQMLFLNSTGRVLDLDRPPMNIHSIVVQVCVNKKVGTVIYHEVRIVVRDR  
 NDNSTPFKHESYATVNELTPVGTTFITGFSGDNGATDIDDGPNQIEYVIQYNPEDPTSNDTFEIPMLL  
 TGNVVLKRLNIEDKTRYYVVIQANDRAQNLNERRTTTTLTVDVLGDGDLGPMFLPCVLVPNTRDCRPL  
 TYQAAIPELRTPEELNPILVTPPIQAIDQDRNIQPPSDRPGILYSILVGTPEDYPRFFHMHPRTAELTLL  
 EPVNRDFHQKFDLVIKAEQDNGHPLPAFASLHIEILDENNQSPYFTMPSYQGYILESAPVGATISESLNL  
 TTPLRIVALDKDIEDTKDPELHLFLNDYTSVFTVPTGITRYLTLQPVDRREEQTYTFLITAFDGVQES  
 EPVVVNIRVMDANDNTPTFPEISYDVVYVYDMSPGDSVIQLTAVDADEGSNGEISYEILVGGKGFVINK  
 TTGLVSIAPGVELIVGQTYALTVQASDNAPPAERRHSICTVYIEVLPNNQSPRFPQLMYSLEVSEAMR  
 IGAILLNLQATDREGDPITYAIENGDPQRVFNLSETTGILSLGKALDRESTDRYILIVTASDGRPDGTST  
 ATVNIVVTDVNDNAPVFDPYLPRNLSVVEEEANAFVGVQVRATDPDAGINGQVHYSLGNFNFLFRITSNGS  
 IYTAVKLNREARDHYELVVVATDGAHVHRHSTLYIKVLDIDDNSPVFTNSTYTVVVEENLPAGTSFLQ  
 IEAKVDVLDGANVSYRIRSPVKHLFALHPFTGELSLRSLDYEAFPDQEASITFLVEAFDIYGTMPGGIA  
 TVTVIVKDMNDYPPVFSKRIYKGMVAPDAVKGTPITTVYAEDADPPGMPASRVRYRVDDVQFPYPASIFD  
 VEEDSGRVVTRVNLNEEPTTIFKLVVAFDDGEPVMSSSATVRILVHPGEIPRFTQEEYRPPPVSELA  
 RGTVVGVISAAAINQSIYYSIVAGNEEDKFGINNVTVGVIYVNSPLDYETRTSYVLRVQADSLEVLNLR  
 VPSKSNKAVYIEIQDENDDHPPVFQKKFYIGGVSEDMRFAVSLRVKATDRDTGNYSAMAYRLIIPPIKE  
 GKEGFVVEYTYGLIKTAMLFHNMRRSYKFKQVIATDDYGKGLSGKADVLVSVVNQLDMQVIVSNVPTLV  
 EKKIEDLTEILDYVQEQIPGAKVVVESIGARRHGDAYSLEDYSKCDLTVYADPQTNRAIDRNELFKFL  
 DGKLLDINKDFQPYGEGGRILEIRTPEAVTSIKKRGESLGYTEGALLALAFIILCCIPAILVVLVSYR  
 QFKVQRQAECTKTARIQSAMPAAKPAAPVPAAPPPPPPPPPGPAHLYEELGESAMHKSYPNWNLGLILAR  
 NMDKIITVMSGMRCPSMEVAVDCCHLLDRRNTAKSLVKLKRNMKKKR

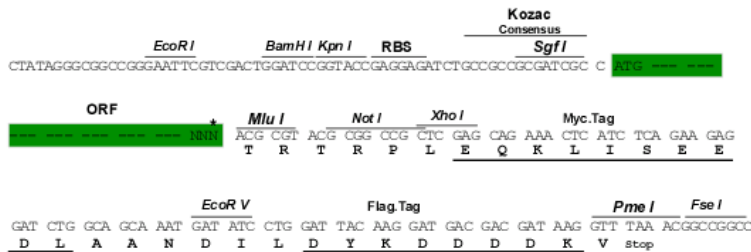
TRTRPLEQKLISEEDLAANDILDYKDDDDKV

**Restriction Sites:**

Sgfl-MluI

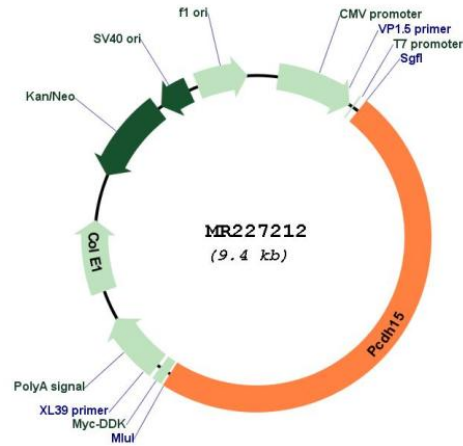
**Cloning Scheme:**

Cloning sites used for ORF Shuttling:



\* The last codon before the Stop codon of the ORF

Plasmid Map:



**ACCN:** NM\_001142743

**ORF Size:** 4554 bp

**OTI Disclaimer:** The molecular sequence of this clone aligns with the gene accession number as a point of reference only. However, individual transcript sequences of the same gene can differ through naturally occurring variations (e.g. polymorphisms), each with its own valid existence. This clone is substantially in agreement with the reference, but a complete review of all prevailing variants is recommended prior to use. [More info](#)

**OTI Annotation:** This clone was engineered to express the complete ORF with an expression tag. Expression varies depending on the nature of the gene.

**Components:** The ORF clone is ion-exchange column purified and shipped in a 2D barcoded Matrix tube containing 10ug of transfection-ready, dried plasmid DNA (reconstitute with 100 ul of water).

**Reconstitution Method:**

1. Centrifuge at 5,000xg for 5min.
2. Carefully open the tube and add 100ul of sterile water to dissolve the DNA.
3. Close the tube and incubate for 10 minutes at room temperature.
4. Briefly vortex the tube and then do a quick spin (less than 5000xg) to concentrate the liquid at the bottom.
5. Store the suspended plasmid at -20°C. The DNA is stable for at least one year from date of shipping when stored at -20°C.

**RefSeq:** [NM\\_001142743.1](#), [NP\\_001136215.1](#)

**RefSeq Size:** 6338 bp

**RefSeq ORF:** 4557 bp

**Locus ID:** 11994

**UniProt ID:** [Q99PJ1](#)

**Cytogenetics:** 10 37.43 cM

**MW:** 168.7 kDa

**Gene Summary:** Calcium-dependent cell-adhesion protein. Required for inner ear neuroepithelial cell elaboration and cochlear function. Probably involved in the maintenance of normal retinal function.[UniProtKB/Swiss-Prot Function]