

## Product datasheet for **MR227200**

### **Rps6ka6 (NM\_025949) Mouse Tagged ORF Clone**

#### **Product data:**

Product Type:	Expression Plasmids
Product Name:	Rps6ka6 (NM_025949) Mouse Tagged ORF Clone
Tag:	Myc-DDK
Symbol:	Rps6ka6
Synonyms:	2610524K04Rik; RSK4; S6K-alpha-6
Mammalian Cell Selection:	Neomycin
Vector:	pCMV6-Entry (PS100001)
E. coli Selection:	Kanamycin (25 ug/mL)



[View online »](#)

**ORF Nucleotide Sequence:**

>MR227200 representing NM\_025949  
 Red=Cloning site Blue=ORF Green=Tags(s)

TTTTGTAATACGACTCACTATAGGGCGGCCGGGAATTCGTCGACTGGATCCGGTACCGAGGAGATCTGCC  
 GCC**CGCATCGCC**

ATGCTGAATTTTAGAAGGACACGCCACACGCCATCTGGCCACAGGTCCAACCTCTAACTTGAACCTGTTCT  
 GTTGTCTTCCATTTTTTGGATGTCGTGCGCGATCCAAGAGTCGGCAGCGGGCGGGACCCCGTGGTCCC  
 TCTTTGAGGTACCCCGGCTGGCGAGGTGCGCAGTCACCCAGCGCGAGACCTGGTCTTTCGAAGACGAC  
 CAGGAGCCCGCTCAGCAGACGGGATGCATGCTGGTGTGGGGCCAGGCAGCTTCTTCTCGAGAGCCCTG  
 AAGCGCGATGCTACCGTTCGCCCTGTGGAGGATCCCTGGGACCAAGAAGACATGGAGGTGTCGGCAG  
 CACGAGCAGTAGCAGCCACAGTTGTGTTTACCATGAAGAACGCAGCAACGGTTATGCGGGAGCATGAA  
 CGCAAAGAGGTAATGATCTGAAAATGGTTGATGAGCCAATGGAAGAGGGAGAGCCAGTTTCTTGCCGGC  
 GGAAGAATTGGTTAAGGAGATACCTATTACACAGCATGTTAAAGAAGGATACGAGAAAGCAGATCCCGC  
 ACAGTTTGACTTGCTCAAGGTTCTGGTCAGGGATCTTTTGAAAAGGTTTTCTTGTAGAAAAGAACT  
 GGTCTGATGCTGGGCAGCTCTATGCAATGAAGGTGTTAAGAAAAGCTTCTTTGAAAAGTTCGAGACCCGAG  
 TTCGCACAAAGATGGAGAGGGATATCTTGGTGAAGTAAATCATCCCTTATCGTCAAATGCACATATGC  
 TTTTCAGACTGAAGGGAAGCTGTACTTAATATTGGATTTCTCAGGGGAGGAGATGTCTTACAAGATTA  
 TCCAAAGAGGTTCTTTTACAGAGGAAGATGTGAAATTCACCTTGCCAGAAATGGCCCTGGCTTTGGATC  
 ATCTACATCGATTAGGAATGTTTATAGAGACCTGAAACCAGAAAACATCTTACTTGATGAAATAGGACA  
 TATCAAGTTAACAGATTTTGGGCTTAGCAAAGAGTCAGTGGATCAAGAAAAGAAGGCCTACTCATTTTGT  
 GGTACTGTAGAATATATGGCCCCTGAAGTAGTAAACAGACGAGGCCATTCTCAGAGTGTGATTGGTGGT  
 CATATGGTGTACTTATGTTTGAATGCTTACTGGCACTTTGCCATTTCAAGGGAAAAGCAGAAATGAGAC  
 CATGAATATGATACTGAAAGCAAAAACCTTGAATGCCCCAATTCCTTAGTGCTGAAGCACAAAGTCTATTA  
 AGGATGTTATTCAAAGGAATCCAGCAAATAGATTGGGGTCAGAAGGAGTTGAAGAAGTCAAAGACATG  
 CTTTTTTGCTTCCATTGACTGGAATAAATATATAAAAGAGAAGTCCAGCCTCCTTTCAGACCTGCTTC  
 TGGAAAACCGGATGATACCTTCTGTTTTGATCCTGAATTTACTGCCAAAACACCTAAAGATTCTCCTGGT  
 TTGCCAGCCAGTGCAAACGCTCATCAACTCTTCAAAGGATTCAGTTTTGTTGCGACTTCTATTGCCGAAG  
 AATATAAATCACTCCTGTTACAAGTTCAAATGTATTACCAATCGTTCAGATAAATGAAATGCTGCTCA  
 ATTTAGTGAAGCTTATGAATTGAAAGAGGATATTGGTATTGGTCTTATTCTGTTTGAAGCGATGCATA  
 CACTCAGCTTCCAATGTGAATTTGCAGTCAAGATCATTGATAAAAATAAGAGAGACCCCTCAGAAGAAA  
 TTGAAATTTGATGCGCTATGGACAACATCCCAACATTATCTCTTAAAGGAGGTCTTTGATGATGGGAA  
 ATATGTTTACCTGTTACGGACTTGATGAAAGGAGGAGAACTTCTGGATCGGATTCTCAAAAAGAAATGT  
 TTCTCAGAGCAGGAAGCTAGTAATGTGCTGTATGTAATAACCAAGACAGTTGAATGCCTTCATTCTCAAG  
 GAGTCGTTTCATCGTGATCTTAAGCCCAGTAATATTTTATATATGGATGAGTCAGCCCATCCAGATTCAAT  
 CAAGATCTGTGATTTGGGTTTGCAAACAGCTTCGTGGAGAAAATGGACTTCTGTTAACTCCGTGCTAC  
 ACCGAAAACCTTTGTAGCACCTGAGGTTCTCACTCAACAGGGATATGATGCTGCCTGTGATATTTGGAGCT  
 TAGGAGTCTTTTGTACACAATGTTGGCTGGCTACACTCCATTTTCCAACGGCCCAATGATACTCCTGA  
 GGAATACTGCTGCGCATAGGCAACGGGAGGTTCTCTTTGAGTGGTGAATCTGGGACAATATTTACGTT  
 GGAGCAAAGGATTTGCTTCTCATATGCTTACATGGACCCACATCAGCGTTATACTGCTGAGCAAGTAT  
 TAAAGCACCTTGATAACCCAAAGAGAACAAGTCCCGCCCATCAGCCAACTCAGATGAGCCACCACA  
 GGAAGCAGTGGCAGCACCATATTCTGTCTTGGCTCGGAACCCAAACAGGCATCATCCAATCTGGAGCCT  
 GTTACTGCTTACGTTTAGCTCAGAGGCGGAACATGAAAAGCGAACATCAACTGGCTTG

**ACGCGT**ACGCGGCCGCTCGAGCAGAACTCATCTCAGAAGAGGATCTGGCAGCAATGATATCCTGGATT  
 ACAAGGATGACGACGATAAGGTTTAA

Protein Sequence: >MR227200 representing NM\_025949  
 Red=Cloning site Green=Tags(s)

MLNFRRTTRHTPSGHRNSNSNLNLFCCLPFFGCRRRRSKSRQAGTPVVPLLRYPRLARS AVTQRETWSFEDD  
 QEPAQQTGCMLVLGPGSFFSRAPEAAMLFPAPVEDPWDQEDMEVFGSTSSSEPQVVFTMKNAAATVMREHE  
 RKEVNDLKMWDEPMEEGEPVSCRREELVKEIPITQHVKEGYEKADPAQFDLLKVLGQGSFGKVFVLRKKT  
 GPDAGQLYAMKVLKASLKVDRVTRTKMERDILVEVNHPFIVKLHYAFQTEGKLYLILDFLRGGDVFTRL  
 SKEVLFTEEDVKFYLAELALALDHLHRLGIVYRDLKPENILLDEIGHIKLTD FGLSKESVDQEKKAYSFC  
 GTVEYMAPEVVNRRGHSQSADWWSYGVL MFEMLTGTLPFQGKDRNETMNMILKAKLGMPQFLSAEAQSL  
 RMLFKRNPANRLGSEGV EEVKRHAFFASIDWNKLYKREVQPPFRPASGKPD DTFCFDPEFTAKTPK DSPG  
 LPASANAHLFKGF SFVATSI AEEYKITPVTSSNVLPIVQINGNAAQFSEAYELKEDIGIGSYSVCKRCI  
 HSASNVEFAVKIIDKNKRD PSEEIEILMRYGQHPNII SLKEVFDDGKYVYLVTDLMKGGELLDRILK KKC  
 FSEQEASNVLYVITKTVECLHSQGVVHRDLKPSNILYMDESAHPDSIKICDFGF AKQLRGENGLLLTPCY  
 TANFVAPEVL TQQGYDAACDIW SLGVLLYTMLAGYTPFSNGPNDTPEEILLRIGNGRFSLSGGIWDNISR  
 GAKDLLSHMLHMDPHQRYTAEQVLKHPWITQREQLPRHQPN SDEPPQEAVAAPYSVLARNPNRHHPILEP  
 VTASRLAQRRNMKKRTSTGL

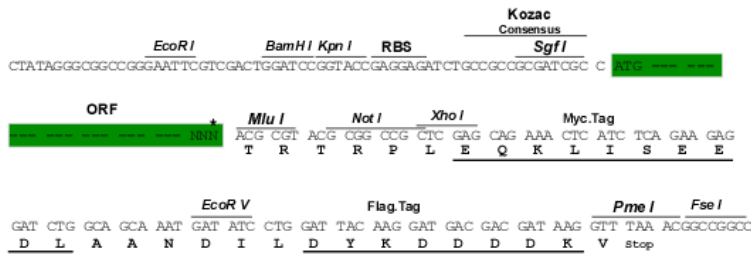
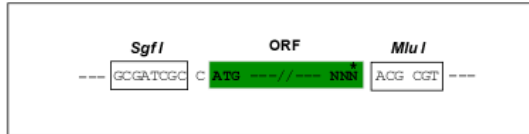
TRTRPLEQKLISEEDLAANDILDYKDDDDKV

Chromatograms: [https://cdn.origene.com/chromatograms/mm9009\\_e08.zip](https://cdn.origene.com/chromatograms/mm9009_e08.zip)

Restriction Sites: SgfI-MluI

Cloning Scheme:

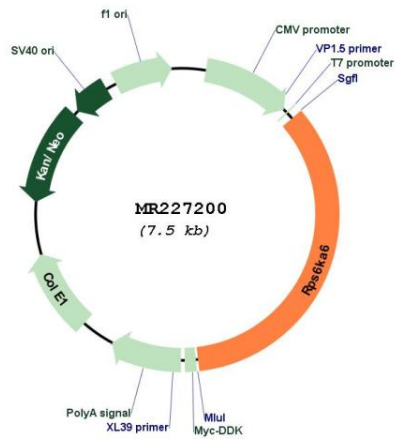
Cloning sites used for ORF Shuttling:



\* The last codon before the Stop codon of the ORF

<b>ACCN:</b>	NM_025949
<b>ORF Size:</b>	2580 bp
<b>OTI Disclaimer:</b>	The molecular sequence of this clone aligns with the gene accession number as a point of reference only. However, individual transcript sequences of the same gene can differ through naturally occurring variations (e.g. polymorphisms), each with its own valid existence. This clone is substantially in agreement with the reference, but a complete review of all prevailing variants is recommended prior to use. <a href="#">More info</a>
<b>OTI Annotation:</b>	This clone was engineered to express the complete ORF with an expression tag. Expression varies depending on the nature of the gene.
<b>Components:</b>	The ORF clone is ion-exchange column purified and shipped in a 2D barcoded Matrix tube containing 10ug of transfection-ready, dried plasmid DNA (reconstitute with 100 ul of water).
<b>Reconstitution Method:</b>	<ol style="list-style-type: none"><li>1. Centrifuge at 5,000xg for 5min.</li><li>2. Carefully open the tube and add 100ul of sterile water to dissolve the DNA.</li><li>3. Close the tube and incubate for 10 minutes at room temperature.</li><li>4. Briefly vortex the tube and then do a quick spin (less than 5000xg) to concentrate the liquid at the bottom.</li><li>5. Store the suspended plasmid at -20°C. The DNA is stable for at least one year from date of shipping when stored at -20°C.</li></ol>
<b>RefSeq:</b>	<a href="#">NM_025949.3</a> , <a href="#">NP_080225.2</a>
<b>RefSeq Size:</b>	4330 bp
<b>RefSeq ORF:</b>	2583 bp
<b>Locus ID:</b>	67071
<b>UniProt ID:</b>	<a href="#">Q7TPS0</a>
<b>Cytogenetics:</b>	X E1
<b>MW:</b>	97.9 kDa
<b>Gene Summary:</b>	Constitutively active serine/threonine-protein kinase that exhibits growth-factor-independent kinase activity and that may participate in p53/TP53-dependent cell growth arrest signaling and play an inhibitory role during embryogenesis.[UniProtKB/Swiss-Prot Function]

Product images:



Circular map for MR227200