

Product datasheet for **MR227176**

Ncam1 (NM_001081445) Mouse Tagged ORF Clone

Product data:

Product Type:	Expression Plasmids
Product Name:	Ncam1 (NM_001081445) Mouse Tagged ORF Clone
Tag:	Myc-DDK
Symbol:	Ncam1
Synonyms:	CD56; E-NCAM; Ncam; NCAM-1
Mammalian Cell Selection:	Neomycin
Vector:	pCMV6-Entry (PS100001)
E. coli Selection:	Kanamycin (25 ug/mL)



[View online »](#)

ORF Nucleotide
Sequence:

>MR227176 representing NM_001081445
 Red=Cloning site Blue=ORF Green=Tags(s)

TTTTGTAATACGACTCACTATAGGGCGGCCGGGAATTCGTCGACTGGATCCGGTACCGAGGAGATCTGCC
 GCC**CGCATCGCC**

ATGCTCGAACTAAGGATCTCATCTGGACTTTGTTTTCTGGAACTGCAGTTTCCCTGCAGGTAGATA
 TTGTTCCAGCCAAGGAGAAATCAGCGTTGGAGAGTCCAAATTCTTCTGTGCAAGTGGCAGGAGATGC
 CAAAGATAAGGACATCTCCTGGTTCTCCCCAATGGGGAGAAGCTGAGCCCAAACAGCAGCGGATCTCA
 GTGGTGTGGAATGATGACGACTCCTCTACCCTCACCATCTACAACGCCAACATCGACGATGCCGGC
 ACAAGTGTGTGGTACGGCTGAGGACGGCACCCAGTCTGAGGCCACTGTCAACGTGAAGATCTTCCAGAA
 GCTCATGTTCAAGAATGCACCAACCCACAGGAGTTTAAGGAAGGGGAGGATGCTGTGATTGTCTGTGAT
 GTGGTCAGCTCCCTGCCTCCAACCATCATCTGAAACACAAGGCCGAGATGTCATTCTGAAAAAGACG
 TCCGGTTCATAGTCTGTCCAACAACACTCTGCAGATCAGGGGCATCAAGAAAACAGATGAGGGTACTTA
 CCGCTGTGAGGGCAGGATCCTGGCCCGGGGAAATCAACTTCAAGGACATTCAGGTCTTGTGAATGTA
 CCACCCACTGTCCAGGCCAGACAGAGCATCGTGAATGCCACTGCCAACCTGGGCCAGTCTGTACCCTGG
 TGTGTGATGCCGATGGCTTCCCAGAGCCCACCATGAGCTGGACAAGGATGGGGAACCCATAGAGAACGA
 GGAGGAAGATGACGAGAAGCACATCTTCAGTGTGACAGCTCCGAGCTGACCATCAGGAATGTGGATAAA
 AACGACGAGGCCGAATACGTCTGCATCGCAGAGAACAAGGCTGGCGAGCAGGATGCCTCCATCCACCTCA
 AGGTCTTTGCAAAGCCAAAAACACCTATGTAGAGAATCAGACGGCCATGGAAGTACAGGAGCAAGTCA
 TCTGACCTGTGAAGCCTCCGGAGACCCATCCCCTCCATCACCTGGAGAACATCCACCCGGAACATCAGC
 AGTGAAGAAAAGACTCTGGATGGGCACATGGTGGTTCGCAGCCATGCTCGTGTCTCTCTTGACCTGA
 AGAGATCCAGTACACAGATGTGGAGAATACATCTGCACTGCCAGCAACACCATCGGCCAGGATCCCA
 GTCCATGTACCTCGAAGTTCAATATGCTCCAAGCTCCAGGGCCCTGTGGCTGTGTACACTTGGGAAGGG
 AACCGGTGAACATCACCTGTGAGGTCTTCGCCTACCCAAGTGCCACAATCTCCTGGTTCGAGATGGTC
 AGTTGCTGCCAAGCTCCAACACAGCAATATCAAGATCTACAACACCCCATCTGTAGCTATCTGGAGGT
 GACCCCTGATTCAGAAAATGACTTTGGAAACTACAACGTACAGCAGTGAACCGTATTGGACAGGAGTCC
 TTGGAATTCATCCTTGTCAAGCAGACACACCGTCTTCTCCATCCATTGACCGGGTGAACCATACTCCA
 GCACAGCGCAGGTGCAGTTTGTAGCCAGAGGCCACAGGGGGCTGCCATTCTCAAGTACAAGGTGA
 GTGGAAGTCGCTGGCGAAGAATCCTGGCATTTCAGTGGTATGATGCCAAGAAGCCAACATGGAAGGC
 ATTTGCACCATCATGGGCTGAAACCTGAGACGAGGTACTCGGTACGACTGGCGGCCCTCAACGGCAAGG
 GGCTGGGCGAGATCAGTGCAGCCACTGAGTTCAAGACACAGCCAGTCCGGGAACCCAGTGCACCCAAGCT
 GGAAGGGCAGATGGGAGAGGACGGAACTCCATCAAGGTGAACCTGATCAAGCAGGATGACGGAGGCTCC
 CCCATCAGACACTATCTGGTCAAGTACAGAGCGCTCGCCTCTGAGTGGAAACCGGAAATCAGGCTCCCAT
 CCGGCAGTGACCAGTATGCTCAAGTCCCTGGACTGGAACGCAGAGTATGAAGTCTATGTGGTAGCTGA
 AAACAGCAAGGAAAAATCCAAGGCAGTCACTTTGTGTTCAAGGACCTCAGCCAGCCACGGCCATCCCA
 GCCAATGGCAGCCCCACCGCAGGCTGAGCACAGGCGCCATTGTGGGCATCCTCATTGTCTCTCGTCC
 TGCTCCTGGTGGTCAATGGACATCACCTGCTACTTCTGAAACAAGTGTGGCCTGCTCATGTGCATCGCTGT
 TAACCTGTGTGGCAAAGCTGGCCCGGAGCCAAGGGCAAAGACATGGAGGAGGGCAAGGCTGCTTTCTCG
 AAAGATGAGTCAAAGAACCATTGTGGAGGTCGGAACGGAGGAAGAACGGACTCAAACCATGATGGGG
 GGAAGCACACAGAGCCAAACGAGACCACCGCTGACAGAACCCGAAAAGGGCCCTGTAGAAACAAAGTC
 TGAGCCCCGGAGTCAGAAGCCAAGCCAGCGCCAACCTGAAGTCAAGACGGTCCCCAACGATGCCACACAA
 ACAAAGAGAATGAGAGCAAAGCA

ACGGTACGCGGCCGCTCGAGCAGAACTCATCTCAGAAGAGGATCTGGCAGCAATGATATCCTGGATT
 ACAAGGATGACGACGATAAGGTTTAA

Protein Sequence: >MR227176 representing NM_001081445
 Red=Cloning site Green=Tags(s)

MLRTKDLIWTLFFLGTAVSLQVDIVPSQGEISVGESKFFLCQVAGDAKDKDISWFSNNGEKLSPNQQRIS
 VVWNDDSSSTLIYNANIDDAGIYKCVVTAEDGTQSEATVNVKIFQKLMFNAPTQEFKEGEDAVIVCD
 VVSSLPTIIWKHKGRDVLKDKDVRFIVLSNNYLQIRGIKKTDEGTYRCEGRILARGEINFKDIQIVVNV
 PPTVQARQSIVNATANLQSVTLVCDADGFPEPTMSWTKDGEPIENEEDEKHFISDDSEL TIRNVDK
 NDEAEYVCIAENKAGEQDASIHLKVFAPKITYVENQTAMELEEQVTLTCEASGDPISITWRTSTRNIS
 SEEKTLDGHMVVRSHARVSSLTKSIQYTDAGEYICTASNTIGQDSQSMYLEVQYAPKLQGPVAVYTWEG
 NQVNITCEVFAYPSATISWFRDQLLPSSNYSNIKIYNTPSASYLEVTPDSENDGNYNCTAVNRIGQES
 LEFILVQADTPSSPSIDRVEPYSSTAQVQFDEPEATGGVPILKYKAEWKSLEESWHFKWYDAKEANMEG
 IVTIMGLKPETRYSVRLAALNGKGLGEISAATEFKTQPVREPSAPKLEGMGEDGNSIKVNLIKQDDGGS
 PIRHYLVKYRALASEWKPEIRLPSGSDHVMLKSLDWNAEYEVVVAENQQGKSKAAHFVFR TSAQPTAIP
 ANGSPTAGLSTGAIVGILIVIFVLLLVM DITCYFLNKCGLLMCIAVNLCGKAGPGAKGKDMEEGKAAFS
 KDESKEPIVEVRTEEERTPNHDGGKHTEPNETTPLTEPEKGPVETKSEPPSEAKPAPTEVKTVPNDATQ
 TKENESKA

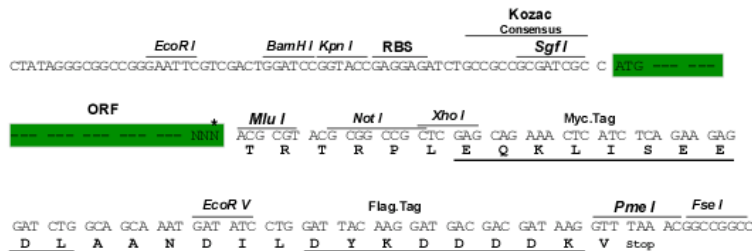
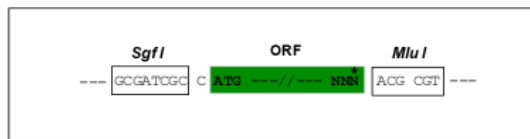
TRTRPLEQKLISEEDLAANDILDYKDDDDKV

Restriction Sites:

Sgfl-MluI

Cloning Scheme:

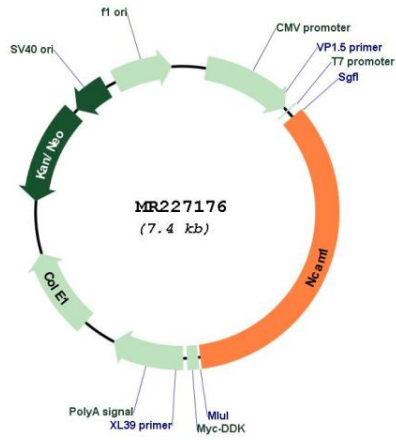
Cloning sites used for ORF Shuttling:



* The last codon before the Stop codon of the ORF

ACCN:	NM_001081445
ORF Size:	2544 bp
OTI Disclaimer:	<p>Due to the inherent nature of this plasmid, standard methods to replicate additional amounts of DNA in E. coli are highly likely to result in mutations and/or rearrangements. Therefore, OriGene does not guarantee the capability to replicate this plasmid DNA. Additional amounts of DNA can be purchased from OriGene with batch-specific, full-sequence verification at a reduced cost. Please contact our customer care team at custsupport@origene.com or by calling 301.340.3188 option 3 for pricing and delivery.</p> <p>The molecular sequence of this clone aligns with the gene accession number as a point of reference only. However, individual transcript sequences of the same gene can differ through naturally occurring variations (e.g. polymorphisms), each with its own valid existence. This clone is substantially in agreement with the reference, but a complete review of all prevailing variants is recommended prior to use. More info</p>
OTI Annotation:	This clone was engineered to express the complete ORF with an expression tag. Expression varies depending on the nature of the gene.
Components:	The ORF clone is ion-exchange column purified and shipped in a 2D barcoded Matrix tube containing 10ug of transfection-ready, dried plasmid DNA (reconstitute with 100 ul of water).
Reconstitution Method:	<ol style="list-style-type: none"> 1. Centrifuge at 5,000xg for 5min. 2. Carefully open the tube and add 100ul of sterile water to dissolve the DNA. 3. Close the tube and incubate for 10 minutes at room temperature. 4. Briefly vortex the tube and then do a quick spin (less than 5000xg) to concentrate the liquid at the bottom. 5. Store the suspended plasmid at -20°C. The DNA is stable for at least one year from date of shipping when stored at -20°C.
RefSeq:	NM_001081445.1 , NP_001074914.1
RefSeq Size:	6192 bp
RefSeq ORF:	2547 bp
Locus ID:	17967
UniProt ID:	P13595
Cytogenetics:	9 26.83 cM
MW:	93.9 kDa
Gene Summary:	This protein is a cell adhesion molecule involved in neuron-neuron adhesion, neurite fasciculation, outgrowth of neurites, etc.[UniProtKB/Swiss-Prot Function]

Product images:



Circular map for MR227176