

## Product datasheet for MR227120

### Lgals3 (NM\_010705) Mouse Tagged ORF Clone

#### Product data:

Product Type:	Expression Plasmids
Product Name:	Lgals3 (NM_010705) Mouse Tagged ORF Clone
Tag:	Myc-DDK
Symbol:	Lgals3
Synonyms:	gal3; GBP; L-34; Mac-2
Mammalian Cell Selection:	Neomycin
Vector:	pCMV6-Entry (PS100001)
E. coli Selection:	Kanamycin (25 ug/mL)
ORF Nucleotide Sequence:	>MR227120 ORF sequence Red=Cloning site Blue=ORF Green=Tags(s)

TTTTGTAATACGACTCACTATAGGGCGGCCGGAATTCGTCGACTGGATCCGGTACCGAGGAGATCTGCC  
GCC**CGATCGCC**

ATGGCAGACAGCTTTTCGCTTAACGATGCCTTAGCTGGCTCTGGAAACCCAAACCCTCAAGGATATCCGG  
GTGCATGGGGGAACCAGCCTGGGGCAGGGGGCTACCCAGGGGCTGCCTATCCTGGGGCTATCCAGGACA  
GGCTCCTCCAGGGGCTACCCAGGACAGGCTCCTCCAGGGGCTATCCAGGACAGGCTCCTCCTAGTGCC  
TACCCCGCCCAACTGCCCTGGAGCTTATCCTGGCCCAACTGCCCTGGAGCTTATCCTGGCTCAACTG  
CCCCTGGAGCCTTCCAGGGCAACTGGGGCACCTGGGGCCTACCCAGTGCTCCTGGAGGCTATCCTGC  
TGCTGGCCCTTATGGTGTCCCGCTGGACCACTGACGGTGCCCTATGACCTGCCCTTGCCTGGAGGAGTC  
ATGCCCGCATGCTGATCACAATCATGGGCACAGTGAAACCCAAACGCAAACAGGATTGTTCTAGATTTCA  
GGAGAGGGGAATGATGTTGCCTTCCACTTTAACCCCGCTTCAATGAGAACAACAGAAGAGTCATTGTGTG  
TAACACGAAGCAGGACAATAACTGGGAAAGGAAGAAAGACAGTCAGCCTTCCCTTTGAGAGTGGAAAA  
CCATTCAAATACAAGTCTGTTGAAGCTGACCACTTCAAGGTTGCGGTCAACGATGCTCACCTACTGC  
AGTACAACCATCGGATGAAGAACCCTCCGGGAAATCAGCCAACCTGGGGATCAGTGGTGACATAACCCCTCAC  
CAGCGCTAACCACGCCATGATC

**ACGCGT**ACGCGGCCGCTCGAGCAGAAACTCATCTCAGAAGAGGATCTGGCAGCAAATGATATCCTGGATT  
ACAAGGATGACGACGATAAGGTTTAA



[View online »](#)

**Protein Sequence:** >MR227120 protein sequence  
Red=Cloning site Green=Tags(s)

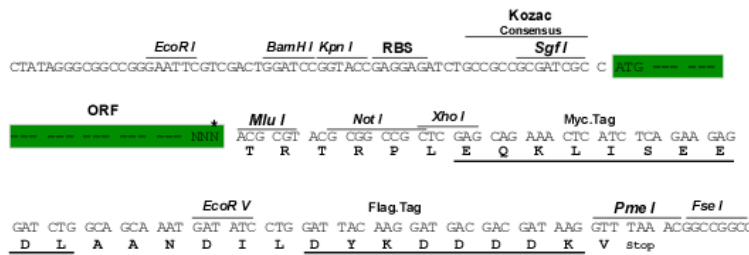
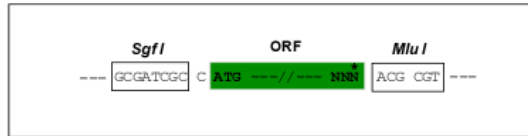
MADSFSLNDALAGSGNPNQGYPGAWGNQPGAGGYPGAAYPGAYPGQAPPAYPGQAPPAYPGQAPPSA  
 YPGPTAPGAYPGPTAPGAYPGSTAPGAFPGQPGAPGAYPSAPGGYPAAGPYGVPAGPLTVPYDLPLPGGV  
 MPRMLITIMGTVKPNANRIVLDFRRGNDVAFHFNPRFNENNRRIVCNTKQDNNWGKEERQSAFPFEESGK  
 PFKIQVLVEADHFKVAVNDAHLLQYNHRMKNLREISQLGISGDIILTSANHAMI

TRTRPLEQKLISEEDLAANDILDYKDDDDKV

**Restriction Sites:** SgfI-MluI

**Cloning Scheme:**

Cloning sites used for ORF Shuttling:



\* The last codon before the Stop codon of the ORF

**ACCN:** NM\_010705

**ORF Size:** 795 bp

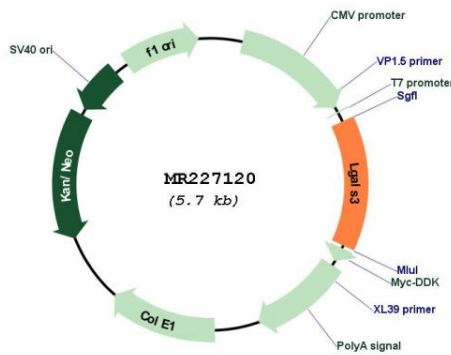
**OTI Disclaimer:** Due to the inherent nature of this plasmid, standard methods to replicate additional amounts of DNA in E. coli are highly likely to result in mutations and/or rearrangements. Therefore, OriGene does not guarantee the capability to replicate this plasmid DNA. Additional amounts of DNA can be purchased from OriGene with batch-specific, full-sequence verification at a reduced cost. Please contact our customer care team at [custsupport@origene.com](mailto:custsupport@origene.com) or by calling 301.340.3188 option 3 for pricing and delivery.

The molecular sequence of this clone aligns with the gene accession number as a point of reference only. However, individual transcript sequences of the same gene can differ through naturally occurring variations (e.g. polymorphisms), each with its own valid existence. This clone is substantially in agreement with the reference, but a complete review of all prevailing variants is recommended prior to use. [More info](#)

**OTI Annotation:** This clone was engineered to express the complete ORF with an expression tag. Expression varies depending on the nature of the gene.

<b>Components:</b>	The ORF clone is ion-exchange column purified and shipped in a 2D barcoded Matrix tube containing 10ug of transfection-ready, dried plasmid DNA (reconstitute with 100 ul of water).
<b>Reconstitution Method:</b>	<ol style="list-style-type: none"> <li>1. Centrifuge at 5,000xg for 5min.</li> <li>2. Carefully open the tube and add 100ul of sterile water to dissolve the DNA.</li> <li>3. Close the tube and incubate for 10 minutes at room temperature.</li> <li>4. Briefly vortex the tube and then do a quick spin (less than 5000xg) to concentrate the liquid at the bottom.</li> <li>5. Store the suspended plasmid at -20°C. The DNA is stable for at least one year from date of shipping when stored at -20°C.</li> </ol>
<b>RefSeq:</b>	<u><a href="#">NM_010705.1</a></u> , <u><a href="#">NM_010705.2</a></u> , <u><a href="#">NM_010705.3</a></u> , <u><a href="#">NP_034835.1</a></u>
<b>RefSeq Size:</b>	1379 bp
<b>RefSeq ORF:</b>	795 bp
<b>Locus ID:</b>	16854
<b>Cytogenetics:</b>	14 C1
<b>MW:</b>	27.4 kDa

**Product images:**



Circular map for MR227120