

Product datasheet for MR227102

Nod2 (NM_145857) Mouse Tagged ORF Clone

Product data:

Product Type:	Expression Plasmids
Product Name:	Nod2 (NM_145857) Mouse Tagged ORF Clone
Tag:	Myc-DDK
Symbol:	Nod2
Synonyms:	ACUG; BLAU; Card15; CD; F830032C23Rik; IBD1; Nlrc2
Mammalian Cell Selection:	Neomycin
Vector:	pCMV6-Entry (PS100001)
E. coli Selection:	Kanamycin (25 ug/mL)
ORF Nucleotide Sequence:	>MR227102 representing NM_145857 Red=Cloning site Blue=ORF Green=Tags(s)

TTTTGTAATACGACTCACTATAGGGCGGCCGGAATTCGTCGACTGGATCCGGTACCGAGGAGATCTGCC
GCC**CGATCGCC**

ATGTGCTCACAGGAAGAGTTCCAGGCACAGAGGAGCCAGCTGGTGGCACTGCTGATCTCAGGGTCTTGG
AGGGCTTTGAGAGCATCTTAGACTGGCTGCTGTCTTGGGATGTGCTCTCCAGGGAGGACTATGAGGGCT
CAGCCTCCCTGGCCAACCTCTCTCCATTCTGCCAGGCGTCTGCTGGACACAGTCTGGAACAAGGGTGT
TGGGGCTGTCAGAAGCTCCTCGAAGCTGTGAGGAGCCACAGGCCAACAGTCATACCTTTGAACTGTATG
GGTCTGGGACACTCACTCCCTTCATCCAACCAGAGACCTGCAGAGTCACCGCCAGCCATTGTGAGGAG
ACTCTACAACCATGTAGAAGCCATGCTGGAGCTGGCAAGGGAGGGGGTTTCTGAGCCAGTACGAGTGT
GAGGAGATCAGGCTGCCAATCTTCACGTCGCTCAGAGGGCAAGAAGGCTGCTTGATCTCGCTGCGGTGA
AGGCCAATGGACTGGCTGCCTTCTTACAGCACGTCAGGGAACACCAGCTCCACTGCCTCTGCCTTA
CGAGGCTGCTGAGTGTGAGAAGTTCATATCTAAGCTGAGGACCATGGTGTGACTCAGTCTCGCTTCCCT
AGTACTTACGATGGTTCGGAGAATCTTTGCCTGGAGGATATACACGGAGAACATCTTGGAGCTGCAGA
CTGAAGTGGGCACAGCCGGGCCCTTGCAGAAGAGCCCTGCCATCCTGGGCTGGAGGACCTTTTGATAC
CCATGGTCACTGAACAGAGATGCCGACACCATACTGGTGGTGGCGAAGCAGGCAGTGGCAAGAGCACT
CTTCTGCAGCGTTTGCACCTGCTGTGGCAACAGGGAGGAGCTCCAGGAGTTTCTTTCTTTCCCAT
TCAGTGCCGACAGTTGCAATGCGTGGCCAAACCGCTGTCCCTGAGGACGCTGCTCTTTGAGCACTGCTG
CTGGCCTGATGTCGCTCAGGACGATGTCTTCCAGTTCTTCTTGACCATCCTGACCGTGTCTGTTAACC
TTTGATGGCTTGGACGAGTTCAAGTTCGGTTCACCGACCGGGAGCGCCACTGCTCTCCAATTGACCCCA
CGTCAGTCCAGACTCTGCTCTTCAACCTTCTCCAGGGAACTGCTGAAGAATGCCTGCAAGGTGCTGAC
CAGCCGTCGGATGCTGTGTCAGCGCTCCTCAGGAAGTTCGTTCCACAGAGTTGCAACTGAAGGGCTTC
TCTGAAGAGGGCATCCAACCTGTACCTGAGAAAGCACCACCGGAACTGGGGTGGCAGACCCGCTCATCC
AGCTGATCCAAGCCACCTCAGCCCTGCATGGTTTGTGCCACCTCCCTGTCTTCTTGGATGGTGTCCAG
ATGCCACCGGAACTTCTGCTGCAGAACAGGGGCTTCCAACAACAGCAGGACATGTACCTCCTGATC



[View online »](#)

CTGCAGCATTTCTGCTGCATGCCTCCCCTCCGGACTCCTCCCCACTCGGTCTGGGACCTGGACTCCTCC
 AAAGCCGGCTCTCCACCCTCTGCACCTTGGCCACCTGGCTCTCCGGGGCCTGGCCATGAGCTGCTATGT
 GTTCTCAGCCCAGCAGCTCCAGGCAGCTCAGGTTGACTCTGATGATATTTCTCTTGGTTTCTGGTACGT
 GCCCAAAGTAGTGTGCCCGGAGCAAGGCGCCCTGGAGTTCTCGACATTACCTTCCAGTGCTTTTTTG
 CCGTTTCTACTTGGCTGTCAGTGTGACACATCGGTGGCCTCTCTCAAGCACCTTTTTCAGCTGTGGCCG
 GCTGGGCAGCTCACTGCTGGGAAGGCTGCTGCCAACCTGTGTATCCAGGGCTCCAGAGTCAAGAAGGGC
 AGCGAAGCAGCCCTGCTGCAGAAGGCTGAGCCACACAACCTGCAAAATCACAGCAGCCTTCTAGCAGGT
 TGTGTCCAGCAGCATCGGGACCTGTTGGCTGCATGCCAGTCTCCGAGAGGGTACTGCTCCAGCGTCA
 GGCACGTGCCCGCTCGTGTCTGGCCACAGCCTCCGCGAGCACTTCCATTCCATCCCGCCTGCCGTGCC
 GGTGAGACCAAGAGCATGCATGCATGCTATGCCGGGCTTCAATTTGGCTCATCCGTAGCCTGTACGAGATGCAGG
 AGGAGCAGTTGGCCAGGAGGCTGTCCGTGCTTGGACATCGGGCACCTGAAGTTGACATTTTGCAGAGT
 GGGCCCTGCAGAGTGTGCTGCACTGGCCTTTGTACTGCAACATCTCCAGCGGCCTGTGGCCCTACAGCTG
 GATTAAACTCTGTGGGAGATGTTGGAGTGAACAGCTGCGACCGTGCCTTGGGGTCTGCACAGCTCTGT
 ATTTGCGAGATAACAATATCTCAGACCGAGGTGCCCGCACGCTGGTTGAGTGTGCTTTCGCTGTGAGCA
 GCTGCAGAAACTAGCTCTTTCAACAACAACTACGGATGCGTGCCTGCTCCATGGCCAAGCTCCTT
 GCACACAAGCAGAACTTCTTGTCCCTGAGGGTGGGGAACAATCACATCACAGCCGCTGGAGCCGAGGTGC
 TGGCCACAGGACTCAAGAGCAACACCTCCCTGAAGTTCCTGGGGTCTGGGGCAACAGCCTGGGTGATAA
 GGGCACCAAGCCCTGGCTGAAGTTGTAGCCGACCACCAGAACCTAAAGTGGCTCAGCCTGGTAGGAAAC
 AACATTGGCAGCATGGGTGCCGAAGCCCTAGCACTGATGCTGGAGAAGAACAAGTCACTAGAGGAACTCT
 GCCTAGAGGAAAACCATATCTGTGACGAAGGGTATATTTCTCTCGAGAAGGACTCAAGAGAAATTAAC
 TTTGAAATTTTGAAGTGTCCAACAATGGCATCACCTACCGGGTGCAGAAGCCCTCTGCAGGCCCTC
 AGCAGGAACAGTGCCATTCTGGAGTGGCTTCGAGGGAACACATTCTTTGGAGGAAATCCAACAC
 TGAGCTCCAGGGACGCCAGACTTTGTTG

ACGCGTACGCGGGCCTCGAGCAGAACTCATCTCAGAAGAGGATCTGGCAGCAAATGATATCCTGGATT
 ACAAGGATGACGACGATAAGGTTTAA

Protein Sequence:

>MR227102 representing NM_145857
 Red=Cloning site Green=Tags(s)

MCSQEEFQAQRSQLVALLISGSLEGFESILDWLLSWDVL SREDYEGLSLPGQPLSHSARRLLDVTWNKGV
 WGCQKLL EAVQEAQANSHTFEL YGSWDTHSLHPTDRLQSHRPAIVRRLYNHVEAMLELAREGGFLSQYEC
 EEIRLPIFTSSQRARRLLDLAAVKANGLAAFLLQHVRELPAPLPLPYEAAECQKFI SKLRTMVL TQSRFL
 STYDGENL CLEDIYTENILELQTEVGTAGALQKSPAILGLEDLFDTHGHLNRDADTILVVGEGSGKST
 LLQRLHLLWATGRSFQEF LIFPFSCRQLQCVAKPLSLRLLFEHCCWPDVAQDDVFQFLDHPDRVLLT
 FDGLDEFKFRFTDRERHCSPIDPTSVQTL LFNLLQGNLLKNACKVLSRPDAVSALLRKFVRETELQKGF
 SEEGIQLYLRKHHREPGVADRLIQLIQATSALHGLCHLPVFSWMVSRCHRELLLNQRGFPTTSDMYLLI
 LQHFLLHASPPDSSPLGLGPGLLQSRLSTLLHLGHLALRGLAMSCYVFS AQQLQAAQVSDDI SLGFLVR
 AQSSVPGSKAPLEFLHITFQCFFAAFYLAVSADTSVASLKHFLSCGRLGSSLLGRLLPNLCIQGSRVKKG
 SEAALLQKAEPHNLQITAAFLAGLLSQQHRDLLAACQVSEVLLQRQARARSCLAHSREHFHSIPPAVP
 GETKSMHAMPGF IWLIRSLYEMQEEQLAQEAVRRLDIGHLKLTFCRVGPAECAALAFVLQHLQRPVALQL
 DYNVSGDVGVEQLRPCLGVCTALYLRDNNISDRGARTLVECALRCEQLQKLALFNKLTADACACSMKLL
 AHKQNFSLRVGNHITAAGA EVLAQGLKSNLSLKF LFGWGNVSGDKGTQALAEVVADHQNLKWL SLVGN
 NIGSMGAEALALMLEKNKSLEELCLEENHICDEGVYSLAEGLKRNSTLKF LKLSNNGITYRGAEALLQAL
 SRNSAILEVWLRGNTFSLEEIQTLSRDARLLL

TRTRPLEQKLI SEEDLAANDILDYKDDDDKV

Chromatograms:

https://cdn.origene.com/chromatograms/mm9035_c03.zip

Restriction Sites:

SgfI-MluI

Cloning Scheme:



ACCN: NM_145857

ORF Size: 3039 bp

OTI Disclaimer: Due to the inherent nature of this plasmid, standard methods to replicate additional amounts of DNA in E. coli are highly likely to result in mutations and/or rearrangements. Therefore, OriGene does not guarantee the capability to replicate this plasmid DNA. Additional amounts of DNA can be purchased from OriGene with batch-specific, full-sequence verification at a reduced cost. Please contact our customer care team at custsupport@origene.com or by calling 301.340.3188 option 3 for pricing and delivery.

The molecular sequence of this clone aligns with the gene accession number as a point of reference only. However, individual transcript sequences of the same gene can differ through naturally occurring variations (e.g. polymorphisms), each with its own valid existence. This clone is substantially in agreement with the reference, but a complete review of all prevailing variants is recommended prior to use. [More info](#)

OTI Annotation: This clone was engineered to express the complete ORF with an expression tag. Expression varies depending on the nature of the gene.

Components: The ORF clone is ion-exchange column purified and shipped in a 2D barcoded Matrix tube containing 10ug of transfection-ready, dried plasmid DNA (reconstitute with 100 ul of water).

Reconstitution Method:

1. Centrifuge at 5,000xg for 5min.
2. Carefully open the tube and add 100ul of sterile water to dissolve the DNA.
3. Close the tube and incubate for 10 minutes at room temperature.
4. Briefly vortex the tube and then do a quick spin (less than 5000xg) to concentrate the liquid at the bottom.
5. Store the suspended plasmid at -20°C. The DNA is stable for at least one year from date of shipping when stored at -20°C.

RefSeq: [NM_145857.2](#), [NP_665856.2](#)

RefSeq Size: 4621 bp

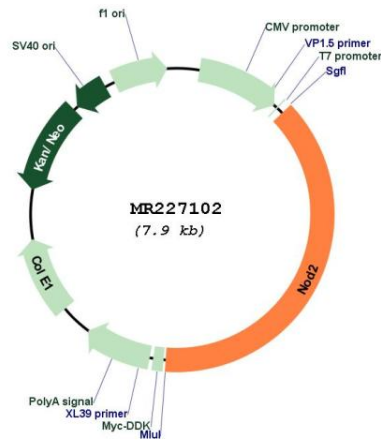
RefSeq ORF: 3042 bp

Locus ID: 257632

Cytogenetics: 8 C3

MW: 113.2 kDa

Product images:



Circular map for MR227102