

Product datasheet for **MR227101L2V**

KI (NM_013823) Mouse Tagged ORF Clone Lentiviral Particle

Product data:

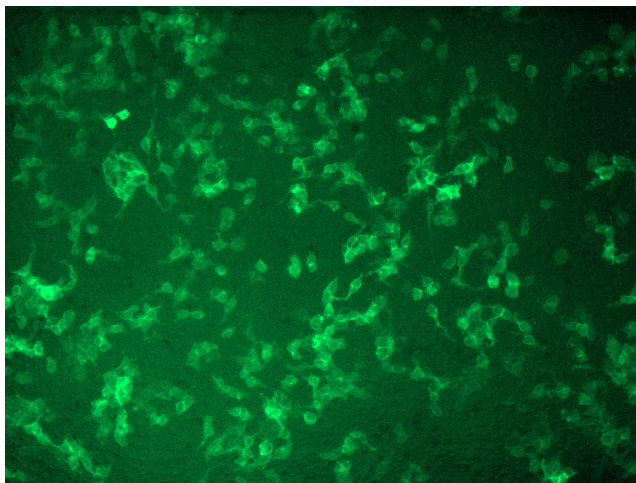
Product Type:	Lentiviral Particles
Product Name:	KI (NM_013823) Mouse Tagged ORF Clone Lentiviral Particle
Symbol:	KI
Synonyms:	alpha-kl
Mammalian Cell Selection:	None
Vector:	pLenti-C-mGFP (PS100071)
Tag:	mGFP
ACCN:	NM_013823
ORF Size:	3045 bp
ORF Nucleotide Sequence:	The ORF insert of this clone is exactly the same as(MR227101).
OTI Disclaimer:	The molecular sequence of this clone aligns with the gene accession number as a point of reference only. However, individual transcript sequences of the same gene can differ through naturally occurring variations (e.g. polymorphisms), each with its own valid existence. This clone is substantially in agreement with the reference, but a complete review of all prevailing variants is recommended prior to use. More info
OTI Annotation:	This clone was engineered to express the complete ORF with an expression tag. Expression varies depending on the nature of the gene.
RefSeq:	NM_013823.2 , NP_038851.2
RefSeq Size:	5124 bp
RefSeq ORF:	3045 bp
Locus ID:	16591
UniProt ID:	O35082
Cytogenetics:	5 G3



[View online »](#)

Gene Summary:

May have weak glycosidase activity towards glucuronylated steroids. However, it lacks essential active site Glu residues at positions 241 and 874, suggesting it may be inactive as a glycosidase in vivo. May be involved in the regulation of calcium and phosphorus homeostasis by inhibiting the synthesis of active vitamin D. Essential factor for the specific interaction between FGF23 and FGFR1.[UniProtKB/Swiss-Prot Function]

Product images:

[MR227101L2] was used to prepare Lentiviral particles using [TR30037] packaging kit. HEK293T cells were transduced with MR227101L2V particle to overexpress human KI-mGFP fusion protein.