

Product datasheet for MR227069L3

Igf1 (NM_001111276) Mouse Tagged Lenti ORF Clone

Product data:

Product Type:	Expression Plasmids
Product Name:	Igf1 (NM_001111276) Mouse Tagged Lenti ORF Clone
Tag:	Myc-DDK
Symbol:	Igf1
Synonyms:	C730016P09Rik; Igf; Igf-; Igf-1; Igf-I
Mammalian Cell Selection:	Puromycin
Vector:	pLenti-C-Myc-DDK-P2A-Puro (PS100092)
E. coli Selection:	Chloramphenicol (34 ug/mL)
ORF Nucleotide Sequence:	The ORF insert of this clone is exactly the same as(MR227069).
Restriction Sites:	SgfI-MluI
Cloning Scheme:	

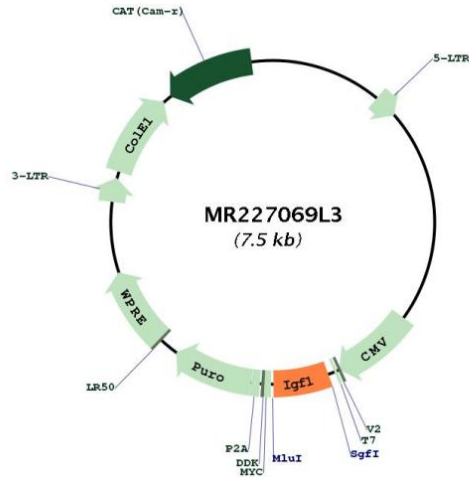
Cloning sites used for ORF Shuttling:



* The last codon before the Stop codon of the ORF.



[View online »](#)

Plasmid Map:


ACCN: NM_001111276

ORF Size: 411 bp

OTI Disclaimer: The molecular sequence of this clone aligns with the gene accession number as a point of reference only. However, individual transcript sequences of the same gene can differ through naturally occurring variations (e.g. polymorphisms), each with its own valid existence. This clone is substantially in agreement with the reference, but a complete review of all prevailing variants is recommended prior to use. [More info](#)

OTI Annotation: This clone was engineered to express the complete ORF with an expression tag. Expression varies depending on the nature of the gene.

Components: The ORF clone is ion-exchange column purified and shipped in a 2D barcoded Matrix tube containing 10ug of transfection-ready, dried plasmid DNA (reconstitute with 100 ul of water).

Reconstitution Method:

1. Centrifuge at 5,000xg for 5min.
2. Carefully open the tube and add 100ul of sterile water to dissolve the DNA.
3. Close the tube and incubate for 10 minutes at room temperature.
4. Briefly vortex the tube and then do a quick spin (less than 5000xg) to concentrate the liquid at the bottom.
5. Store the suspended plasmid at -20°C. The DNA is stable for at least one year from date of shipping when stored at -20°C.

RefSeq: [NM_001111276.1](#), [NP_001104746.1](#)

RefSeq Size: 6987 bp

RefSeq ORF: 414 bp

Locus ID: 16000

Cytogenetics: 10 43.7 cM

Gene Summary: This gene encodes a member of the insulin-like growth factor (IGF) family of proteins that promote growth and development during fetal and postnatal life. This gene is predominantly expressed in the liver and the encoded protein undergoes proteolytic processing to generate a disulfide-linked mature polypeptide. Transgenic disruption of this gene in mice results in reduced postnatal survival and severe growth retardation. Mice lacking the encoded protein exhibit generalized organ hypoplasia including underdevelopment of the central nervous system and developmental defects in bone, muscle and reproductive systems. Alternative splicing results in multiple transcript variants encoding different isoforms that may undergo similar processing to generate mature protein. [provided by RefSeq, Sep 2015]