

Product datasheet for MR227053

Rab3c (NM_023852) Mouse Tagged ORF Clone

Product data:

Product Type:	Expression Plasmids
Product Name:	Rab3c (NM_023852) Mouse Tagged ORF Clone
Tag:	Myc-DDK
Symbol:	Rab3c
Synonyms:	2700062I01Rik; 3110015B08Rik; 3110037E15Rik; AI850886
Mammalian Cell Selection:	Neomycin
Vector:	pCMV6-Entry (PS100001)
E. coli Selection:	Kanamycin (25 ug/mL)
ORF Nucleotide Sequence:	>MR227053 ORF sequence Red=Cloning site Blue=ORF Green=Tags(s)

TTTTGTAATACGACTCACTATAGGGCGCCGGAATTCGTCGACTGGATCCGGTACCGAGGAGATCTGCC
GCCCGATCGCC

ATGAGACACGAGGCGCCCATGCAGATGGCCTCTGCACAAGATGCCAGTTTGGTCAGAAAGACTCTTCTG
ACCAGAACTTCGACTACATGTTCAAGTTGCTGATCATTGGCAATAGCAGCGTGGGCAAAACATCTTCTC
GTTCCGTTATGCCGACGATTCCCTTACATCTGCATTTCGTCAGCACGGTTGGCATCGATTTCAAAGTAAA
ACTGTATTCAAAAATGAGAAGAGAATCAAGCTTCAGATTTGGGACACAGCAGGCCAGGAAAGATACAGGA
CCATCACACAGCCTACTATCGAGGGCCATGGGCTTCATTTAATGTATGACATCACAATGAAGAATC
CTTCAACGCTGTACAAGATTGGTCAACTCAGATCAAACATACTCTGGGATAATGCCAGGTTATCCTG
GCTGGAACAAATGTGACATGGAAGATGAGCGGTTGTCTCAACCGAGAGAGGCCAGCGCTTAGGAGAAC
AGCTCGGGTTTGAGTTTTTGAACCAGCGCAAGGATAACATCAACGTGAAGCAAACCTTCGAGCGCCT
CGTAGATATCATTTGTGACAAAAATGTCAGAGAGCTTGAGACCGACCCAGCCATCACAGCGGCAAGCAG
AGCAGGAGGCTCAAGGAGACCCCTCCTCCACCACAGCCCAACTGTGGCTGC

ACGCGTACGCGGCGCTCGAGCAGAACTCATCTCAGAAGAGGATCTGGCAGCAAATGATATCCTGGATT
ACAAGGATGACGACGATAAGGTTTAA



[View online »](#)

Protein Sequence: >MR227053 protein sequence
 Red=Cloning site Green=Tags(s)

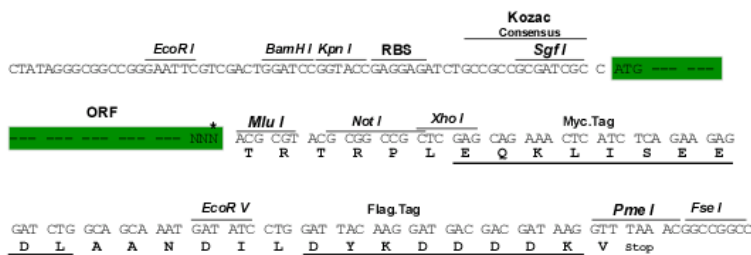
MRHEAPMQMASAQDARFGQKDDSSDQNFDFYMKLLIIGNSSVGKTSFLFRYADDSFTSAFVSTVGIDFKVK
 TVFKNEKRIKLQIWDTAGQERYRTITTAYYRGAMGFILMYDITNEESFNAVQDWTQIKTYSWDNAQVIL
 AGNKCDMEDERVVSTERGQRLGEQLGFEFFETSAKDNIINVKQTFERLVDIICDKMESLETDPAITAAKQ
 STRLKETPPPPQPNCGC

TRTRPLEQKLISEEDLAANDILDYKDDDDKV

Restriction Sites: SgfI-MluI

Cloning Scheme:

Cloning sites used for ORF Shuttling:



* The last codon before the Stop codon of the ORF

ACCN: NM_023852

ORF Size: 684 bp

OTI Disclaimer: The molecular sequence of this clone aligns with the gene accession number as a point of reference only. However, individual transcript sequences of the same gene can differ through naturally occurring variations (e.g. polymorphisms), each with its own valid existence. This clone is substantially in agreement with the reference, but a complete review of all prevailing variants is recommended prior to use. [More info](#)

OTI Annotation: This clone was engineered to express the complete ORF with an expression tag. Expression varies depending on the nature of the gene.

Components: The ORF clone is ion-exchange column purified and shipped in a 2D barcoded Matrix tube containing 10ug of transfection-ready, dried plasmid DNA (reconstitute with 100 ul of water).

Reconstitution Method:

1. Centrifuge at 5,000xg for 5min.
2. Carefully open the tube and add 100ul of sterile water to dissolve the DNA.
3. Close the tube and incubate for 10 minutes at room temperature.
4. Briefly vortex the tube and then do a quick spin (less than 5000xg) to concentrate the liquid at the bottom.
5. Store the suspended plasmid at -20°C. The DNA is stable for at least one year from date of shipping when stored at -20°C.

RefSeq: [NM_023852.5](#), [NP_076341.1](#)

RefSeq Size: 8500 bp

RefSeq ORF: 684 bp

Locus ID: 67295

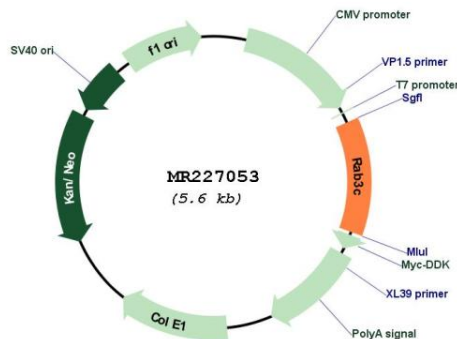
UniProt ID: [P62823](#)

Cytogenetics: 13 D2.1

MW: 25.9 kDa

Gene Summary: Protein transport. Probably involved in vesicular traffic (By similarity).[UniProtKB/Swiss-Prot Function]

Product images:



Circular map for MR227053