

Product datasheet for MR227044L4

Pecam1 (NM_008816) Mouse Tagged Lenti ORF Clone

Product data:

Product Type:	Expression Plasmids
Product Name:	Pecam1 (NM_008816) Mouse Tagged Lenti ORF Clone
Tag:	mGFP
Symbol:	Pecam1
Synonyms:	C85791; Cd31; Pecam; PECAM-1
Mammalian Cell Selection:	Puromycin
Vector:	pLenti-C-mGFP-P2A-Puro (PS100093)
E. coli Selection:	Chloramphenicol (34 ug/mL)
ORF Nucleotide Sequence:	The ORF insert of this clone is exactly the same as(MR227044).
Restriction Sites:	SgfI-MluI
Cloning Scheme:	

Cloning sites used for ORF Shuttling:



* The last codon before the Stop codon of the ORF.

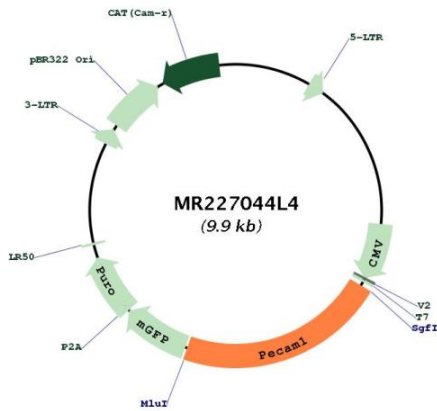
ACCN:	NM_008816
ORF Size:	2148 bp



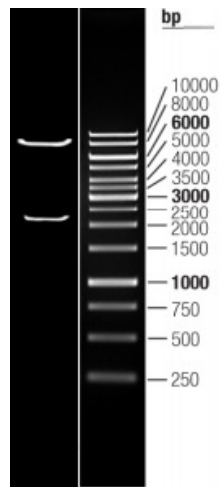
[View online »](#)

OTI Disclaimer:	The molecular sequence of this clone aligns with the gene accession number as a point of reference only. However, individual transcript sequences of the same gene can differ through naturally occurring variations (e.g. polymorphisms), each with its own valid existence. This clone is substantially in agreement with the reference, but a complete review of all prevailing variants is recommended prior to use. More info
OTI Annotation:	This clone was engineered to express the complete ORF with an expression tag. Expression varies depending on the nature of the gene.
Components:	The ORF clone is ion-exchange column purified and shipped in a 2D barcoded Matrix tube containing 10ug of transfection-ready, dried plasmid DNA (reconstitute with 100 ul of water).
Reconstitution Method:	<ol style="list-style-type: none">1. Centrifuge at 5,000xg for 5min.2. Carefully open the tube and add 100ul of sterile water to dissolve the DNA.3. Close the tube and incubate for 10 minutes at room temperature.4. Briefly vortex the tube and then do a quick spin (less than 5000xg) to concentrate the liquid at the bottom.5. Store the suspended plasmid at -20°C. The DNA is stable for at least one year from date of shipping when stored at -20°C.
RefSeq:	NM_008816.2
RefSeq Size:	3305 bp
RefSeq ORF:	2151 bp
Locus ID:	18613
UniProt ID:	Q08481
Cytogenetics:	11 E1
Gene Summary:	Cell adhesion molecule which is required for leukocyte transendothelial migration (TEM) under most inflammatory conditions (By similarity). Tyr-679 plays a critical role in TEM and is required for efficient trafficking of PECAM1 to and from the lateral border recycling compartment (LBRC) and is also essential for the LBRC membrane to be targeted around migrating leukocytes (By similarity). Trans-homophilic interaction may play a role in endothelial cell-cell adhesion via cell junctions (By similarity). Heterophilic interaction with CD177 plays a role in transendothelial migration of neutrophils (By similarity). Homophilic ligation of PECAM1 prevents macrophage-mediated phagocytosis of neighboring viable leukocytes by transmitting a detachment signal (By similarity). Promotes macrophage-mediated phagocytosis of apoptotic leukocytes by tethering them to the phagocytic cells; PECAM1-mediated detachment signal appears to be disabled in apoptotic leukocytes (By similarity). Modulates bradykinin receptor BDKRB2 activation (By similarity). Regulates bradykinin- and hyperosmotic shock-induced ERK1/2 activation in endothelial cells (By similarity). Induces susceptibility to atherosclerosis (PubMed:19048083).[UniProtKB/Swiss-Prot Function]

Product images:



Circular map for MR227044L4



Double digestion of MR227044L4 using SgfI and MluI