

Product datasheet for **MR227025**

Mtss1 (NM_001146180) Mouse Tagged ORF Clone

Product data:

Product Type:	Expression Plasmids
Product Name:	Mtss1 (NM_001146180) Mouse Tagged ORF Clone
Tag:	Myc-DDK
Symbol:	Mtss1
Synonyms:	2310003N14Rik; BC024131; D130001D01Rik; Mim; mKIAA0429
Mammalian Cell Selection:	Neomycin
Vector:	pCMV6-Entry (PS100001)
E. coli Selection:	Kanamycin (25 ug/mL)



[View online »](#)

ORF Nucleotide Sequence:

>MR227025 representing NM_001146180
 Red=Cloning site Blue=ORF Green=Tags(s)

TTTTGTAATACGACTCACTATAGGGCGGCCGGAATTCGTCGACTGGATCCGGTACCGAGGAGATCTGCC
 GCC**CGCATCGCC**

ATGGAGGCTGTGATCGAGAAGGAATGCAGCGCGCTTGGAGGCCTCTCCAGACCATCATCAGCGACATGA
 AGGGGAGCTATCCAGTTTGGGAAGACTTCATAAAACAAAGCCGAAAGCTACAGTCCAGCTGCGGACAAC
 AGTAGTAGCAGCAGCTGCCTTCTTGAGACGCTTTCAGAAAAGTGGCTGACATGGCCACCAACACACGTGGT
 GGTACCCGGGAGATCGGCTCAGCTCTACCAGAAATGTGCATGCGGCACCGGAGCATCGAGGCCAAGCTGA
 GGCAGTTCTCCAGTGCTTTGATCGATTGCCTGATAAACCCACTGCAAGAACAATGGAGGAATGGAAGAA
 AGTGGCCAACCAGCTGGACAAGGACCACGAAAAGAATAAAGAAAGCTCGACAAGAGATAAAAAAGAAG
 TCCTCTGACACGCTGAAGCTGCAGAAGAAGGCAAAAAAGGGAGGGGCGACATCCAGCCTCAGTTGGACA
 GCGCTCTCCAGGATGTCAACGATAAATACCTCCTGTTGGAGGAAACGGAGAAGCAGGCTGTGCGCAAGGC
 ACTCATCGAAGAACGAGGCCGGTTCGCACCTTCATCTCTATGCTGCGGCCAGTGATCGAGGAAGAGATT
 TCCATGTTAGGAGAGATTACCCACCTTCAGACCATATCGGAGGATCTGAAGAGCCTGACCATGGACCCTC
 ACAAGCTGCCCTCCTCAAGTGAACAGGTGATTTTGGACTTGAAAGGTTCTGACTATAGTTGGTCCTATCA
 GACGCCTCCTTCTTCTCCAGTACAACATATGTCCAGAAAGTCAAGTGTCTGCAGCAGCCTGAACAGCGTC
 AACAGCAGTGACTCCCGGTCCAGTGGCTCCCACTCGCACTCGCCAGCTCGCATTACCGGTACCGCAGCT
 CTAACCTGGCCCAGCAGGCCCGCTGAGGCTGTCCAGCGTGTCTCCACGACTCAGGATTCATATCCCA
 GGACGCCTTCCAGTCCAAGTCAACCTCTCCATGCCACCTGAAGTGCACCAAGGAACTCGTCCAGCTCG
 GCCTCCTCCGAAGCGTCGAAACCTGCCAGTCAAGTGCAGGAGTGCAGTCCCAACCTCAGTCAAGTCAAG
 GCTCTACCATGGGCGCTGGGTGTCCACAGAGAAGGACTGGGCAAGCCAGGACCTATGACCAAGCCTC
 GGTGAACACCCTCCAGCGCCGCAAGAGAAACGTGAGCCAGACTCTAATGGGGGAGGACCCACTACGACA
 GGAGGGCCACCTGCAGGTGCTGAAGAGGCGCAGAGACCAAGGAGCATGACGGTGTGAGTCCACACAGGC
 CTGGTGAGGAGATGGCGCCTGTGAGGAACTGACACTCGCCCTGTCCCGGGCCTCCAGCTGGACGTGCA
 GAGGAGCAGCCGGGACTCACTACAGTGTCCAGCGGCTACAGCACCCAGACCACCACCCCGTGTGCTCT
 GAGGATACCATCCCCTCCAAGGTACGAGGCGCCAGCTTGCCGTCCGGCTTCCGGGCGGGTCCAGTTT
 CAGATTACGATTATTTCTGTAAAGTGGCGACCAGGAGGCAGAGCAGCAAGAATTCGACAAGTCTCCAC
 CATTCCAAGGAACAGTGACATCAGCCAGTCTTACAGGCGGATGTTCCAAGCCAAGCGTCCAGCCTCAACG
 GCTGGCCTACCCACCACTCTCGGACCTGCTATGGTCAACACAGGGGTGGCGACCATCCGACGGACCCTT
 CCACCAAGCCTTCTGTCCGCGGGGACCATCGGAGCTGGTCTATTCCCATCAAGACACCAGTGATCCC
 TGTCAAAACCCCAACTGTCCAGACCTCCTGGGGTTTTGCCATCCCCTCCAGATGGGCCAGAGGAGCGG
 GGTGAGCACAGCCCCGAGTCTCCATCTGCAGGGGAGGGGCCCCAGGGTGTGAGCAATATACCCTTCTCT
 TGTGGAGTGGCCAAGCACCCGTCAACCTCCACTTCCAGGCCAAAGCCAGTATCCCTGAGGAACACAG
 ACAGGGGATTCCAGAGAGCGAGGCTGAAGACCAGGAAAGGGACCCCAAGTGCCACTGTCTCCCGAGGC
 CCGATTCCAGAGAGTGACCCCGCAGACCTGAGCCCCAGAGAAAGTCTCAGGGAGAAGACATGTTGAACG
 CCATCCGGAGGGCGTGAAGCTGAAGAAGACGACCACCAACGATCGCTCAGCACCGCGCTTCTCT

ACGCGTACGCGGCGCTCGAGCAGAACTCATCTCAGAAGAGGATCTGGCAGCAAATGATATCCTGGATT
 ACAAGGATGACGACGATAAGGTTTAA

Protein Sequence: >MR227025 representing NM_001146180
Red=Cloning site Green=Tags(s)

```
MEAVIEKECSALGGLFQTIISDMKGSYPVWEDFINKAGKLQSQLRRTTVAAAAFLDAFQKVADMATNTRG
GTREIGSALTRMCMRHRSEIAKLRQFSSALIDCLINPLQEQMEEWKKVANQLDKDHAKEYKARQEIKKK
SSDTLKLQKAKKGRGDIQPQLDSALQDVNDKYLLLEETEKAQVRKALIEERGRFCTFISMLRPVIEEEI
SMLGEITHLQTI SEDLKSLTMDPHKLPSSSEQVILD LKGSYQTPPPSSPSTTMSRKSSVCSSLNSV
NSSDSRSSGSHSPSSHYRYSNLAQQAPVRLSSVSSHDSGFISQDAFQSKSPMPPEAANQNSSSS
ASSEASETCQSVSECSSPTSVSSGSTMGAWVSTEKDWAKPGPYDQPLVNTLQRRKEKREPDNNGGPTTT
GGPPAGAEAAQRPRSMVSAATRPGEEMAAACEELTLALSRGLQLDVQRSSRDSLQCSSGYSTQTTTPCCS
EDTIP SQGTRRPACRPAFRAGPVSDYDYF SVSGDQEAQQEFDKSSTIPRNSDISQSYRRMFQAKRPAST
AGLPTTLGPAMVTPGVATIRRTSTKPSVRRGTIGAGPIPIKTPVIPVKTPTPV PDLPGVLPSPDPGPEER
GEHSPESPAGEGPQGVSNIPSSLWSGQAPVNPPLPGPKPSIPEEHRQAIP ESEAEDQERDPPSATVSPG
PIPESDPADLSPRESPQGEDMLNAIRRGVKKLKT TNDRSAPRFS
```

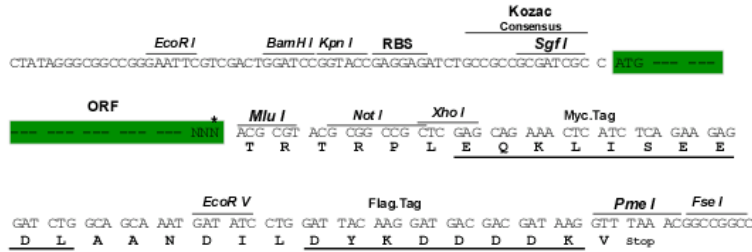
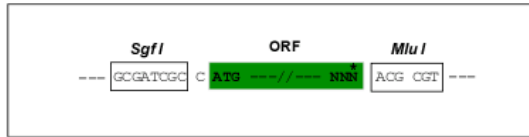
TRTRPLEQKLI SEEDLAANDILDYKDDDDKV

Restriction Sites:

Sgfl-MluI

Cloning Scheme:

Cloning sites used for ORF Shuttling:



* The last codon before the Stop codon of the ORF

ACCN: NM_001146180

ORF Size: 2235 bp

OTI Disclaimer: The molecular sequence of this clone aligns with the gene accession number as a point of reference only. However, individual transcript sequences of the same gene can differ through naturally occurring variations (e.g. polymorphisms), each with its own valid existence. This clone is substantially in agreement with the reference, but a complete review of all prevailing variants is recommended prior to use. [More info](#)

OTI Annotation: This clone was engineered to express the complete ORF with an expression tag. Expression varies depending on the nature of the gene.

Components: The ORF clone is ion-exchange column purified and shipped in a 2D barcoded Matrix tube containing 10ug of transfection-ready, dried plasmid DNA (reconstitute with 100 ul of water).

Reconstitution Method:

1. Centrifuge at 5,000xg for 5min.
2. Carefully open the tube and add 100ul of sterile water to dissolve the DNA.
3. Close the tube and incubate for 10 minutes at room temperature.
4. Briefly vortex the tube and then do a quick spin (less than 5000xg) to concentrate the liquid at the bottom.
5. Store the suspended plasmid at -20°C. The DNA is stable for at least one year from date of shipping when stored at -20°C.

RefSeq: [NM_001146180.1](#), [NP_001139652.1](#)

RefSeq Size: 4933 bp

RefSeq ORF: 2238 bp

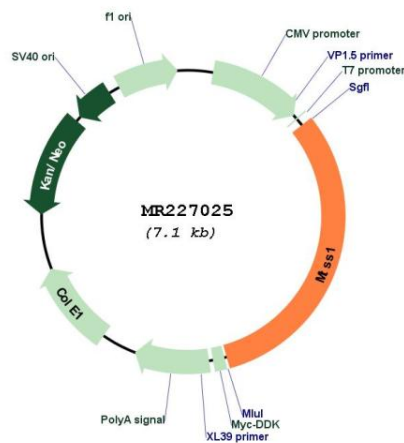
Locus ID: 211401

Cytogenetics: 15 D1

MW: 81.1 kDa

Gene Summary: Inhibits the nucleation of actin filaments in vitro.[UniProtKB/Swiss-Prot Function]

Product images:



Circular map for MR227025