

Product datasheet for MR226945

Camta1 (NM_001081557) Mouse Tagged ORF Clone

Product data:

Product Type: Expression Plasmids
Product Name: Camta1 (NM_001081557) Mouse Tagged ORF Clone
Tag: Myc-DDK
Symbol: Camta1
Synonyms: 1810059M14Rik; 2310058O09Rik; AI316882; AW987475; mKIAA0833
Mammalian Cell Selection: Neomycin
Vector: pCMV6-Entry (PS100001)
E. coli Selection: Kanamycin (25 ug/mL)
ORF Nucleotide Sequence: >MR226945 representing NM_001081557
 Red=Cloning site Blue=ORF Green=Tags(s)

TTTTGTAATACGACTCACTATAGGGCGGCCGGAATTCGTCGACTGGATCCGGTACCGAGGAGATCTGCC
 GCC**CGATCGCC**

ATGTGGCGCGGGAGGGAAATGGCTGCCGAAAACAAGCCGGAAGAGCGTTTCCCAAAGTGTATTCTGCG
 GAACTAGCACCTACTGTGTTCTCAACACCGTGCCACCTATAGAAGATGATCATGGGAACAGCAATAGTAG
 TCATGTAAAAATCTTTTACCGAAAAAGCTGCTTGAATGTCTGCCGAAATGTTCAAGTTTACCCAAAGAG
 AGGCACCGCTGGAACACTAATGAGGAAATTGCGGCTTATTTAATAACATTTGAGAAACACGAAGAATGCG
 TAACCACATCCCCTAAGACAAGACCGCAGAATGGCTCCATGATACTCTACAACAGGAAGAAAGTGAAGTA
 CAGGAAAGACGGGTACTGCTGGAAGAAGAGGAAAGATGGGAAAACGACCAGAGAGGACCACATGAAGCTC
 AAAGTCCAGGGAGTTGAGTGCTTGTACGGCTGCTATGTCCATTCCCTCATACCTACTTTCCACCGGA
 GGTGCTACTGGCTCCTTCAGAACCCGACATCGTCCTGGTGCACTACCTGAATGTGCCGGCCATTGAGGA
 CTGCGGCAAGCCCTGTGGGCCCATCCTCTGCTCCATCAACACCGACAAGAAGGAGTGGGCTAAGTGGACG
 AAGGAGGAACTCATCGGGCAGCTGAAGCCCATGTTCCATGGTATCAAATGGACCTGCAGCAATGGAACA
 GCAGCTCAGGCTTCTCCGTGGAGCAGCTGGTGAACAGATCCTCGACAGCCACCAGCAAGCCCGACCC
 CCGGACCCACAACCTGCCTCTGCACCGGCAGCCTGGGAGCGGGCAGCAGCGTGCATCATAAGTGAATAGT
 GCCAAACACCGCATCATCTACCAAAGGTGGAGCCGCGGGCCGGGGCTATGGGGCCACTCGGAAGTAC
 AACACAACGACGTGTAGAGGGCAAGCATGAACCCAGCCACGGCAGGAGCACGAGCCGGGAGAAGAGGAA
 TGGCAAGGTGGCAAGCCGGCACTGCTGCACCAGAACAGCACGGAGGTTTCTCCACCAACCAGGTGGAG
 GTCCCGACACTACCCAGAGCTCCCCGTGCCATCAGCAGCGGGCTCAACAGTGACCCAGACATGGTAG
 ACAGCCCGGTTGTACAGGTGTGTCCAGCATGGCAGTGGCCTCTGTGATGGGGGACTGTCCCAAAGTGC
 CACAGTGTATGTCCGAGGTCACTAACGAGGCCGTGTACACCATGTCCCCACCCTGGTCCCAACCAC
 CACCTCCTCTCGCCGATGCCTCTCAGGGCCTGTACTGGCTGTAAGTTCTGACGGCCACAAGTTTGCCT
 TCCCCACCACGGGAGCTCAGACAGCCTGTCCATGCTGCCGCAATGTGTCCGAAGAGCTGGTCTCTC
 CACCACCTCGAGGTGGCCGGAAGATTCCAGAGACCGCCATGAACCTCGACCCGACTGTTTCTCAAT



[View online >](#)

AATCAAAGCAGGGCCAGACATACGGGGTGGGGCCTGAAAGCTGAGATGGTTAGCACCAATATCCGGC
 ACTCGCCGCTGCAGAGAGGAGCTTTGGCTTACCAGCGTCTCACCAAGGAGATCAAGACCGAAGACAC
 CTCCTTTGAGCAGCAGATGGCCAAAGAGGGCCCTACTCTCTCGGCGGCAGCTGCCGCGTCCAGCTCC
 CTCACACTGACCGCGCGGGATCTAGCTCCTGCCGTGGGGCGTGGCTGAGTCCCAGCACCACCTCG
 AGCAGATGGACTTCAGTGCCATAGACTTAACAAGGACTACGCGTCCAGCTTACGCCAGACGGGCCACAG
 CCCCCATATCCACCAAACCCCTCCCCAGCTTCTTCTGCAGGATGCCAGCAAGCCCTCCCCTTGAG
 CAGAATACCCACAGCAGCCTAAGCGAGTCAGGGCCGCTTTGTGATGCCACGGTGAACCGAGGCCCT
 CGTCCCAAACAGCTCTTGCAGCGCCACGTGGAAACCCGGATAGAGTCTACTTCTCTTGCACCTCAT
 GCAGTTCAGGCCAACTTCAAGCCATGGCGGCAAGGGGAGGTTACCATGGAGACCTCACAGGCAGT
 GAAGGGAATGAGGTCTCTCAAGTCTGGGGAGCTGCAGGCCTGTGGCTCTGAGCACTACCTGCAGCCAG
 AGACCAATGGGGTATCCGCAGCGCAGGTGGCGTCCCCCTTCTCCGAGCAATGTGGTGCAGGGACTCTA
 CCCGGTGGCCAGCCAGCTGGCAACAGCTTAACATGGAGCTCAGCTGGACCCTTTGACATTTCC
 TTCAGCAATCAGTTCTCAGACCTGATCAATGACTTCATCTCTGTGGAGGGGGCAGTGGTACGATCTACG
 GGCACCAGCTGGTGTGGGGGACAGCGTGCACCTCACAGTCCGAAGATGGGGCGGGCACCCCTCAC
 CCAGGCGGAGATGTGATTCCCTGCTGCAGCCCCAACAGGGCAGCTGCAGCTGAGCAGCGCTGAGGGC
 GGGCCCAGCACCATGGCCTACATGCATGTTGCAGAGGTGGTCTCGGCCGCTCGGCCAGGGCGCCCTGG
 GCATGCTGCAGCAGAGCGGACGGGTGTTTATGGTACTGACTATTCCCCAGAGTGGTCTTACCCAGAGGG
 AGGAGTGAAGTTCTCATCACAGGCCATGGCAAGAAGCCAGCAATAATTACAGTTGCCTGTTTGACCAG
 ATCTCCGTGCCTGCATCCCTGATTCAGCCTGGGGTGTGGCTGTACTGCCAGCCACGACACGGGTCT
 TTGTGACCCTGCAAGTTGCCTTCAACAATCAGATCATCTTAATTCGGTGGTGTGGAGTACAAGGCTCG
 GGCCTGCCACACTCCCTTCTCCAGCAGACTGGCTGTACTGGACGATAACCAGTTCAGGATGTCC
 ATCCTGGAGCGTCTGGAGCAGATGGAAAGGAGGATGGCCGAGATGACCGGCTCCCAGCAGCAAGCAGG
 CGAGCGCGGAGCGGCAGCGGAGCGGCAGCGGAGTGGTCCCGGAGGGGGCCAGGCCCATGTGCTCCTC
 GGGCGCTGGGACCTGGGAGCTGCTTCGAGAGCGTGTGGTGTGCGTGTGAGAAGATGATGAGCCGG
 GCCTGCTGGGCCAAGTCCAAGCATCTGATCCATTGCAAGACCTTCCGCGGGATGACCCTTTACACCTGG
 CTGCTGCCAGGGCTACGCCACCCTGATCCAGACCCTCATCAAATGGCGCACAAGCATGCAGACAGCAT
 TGATTTGGAAGTGGAGTTGATCCCTGAATGTGGACCACTTCTCTGTACTCTCTGATGTGGCCTGT
 GCCCTGGGGCACTTGAAGCGGTGTGGTGTCTACAAGTGGGACCGCGGGCCATCTCCATCCCCGACT
 CTCTGGGACGGCTGCCTTTGGGAATTGCCAGTTCGAGGGCCACGTGAAGTTAGCAGAGTGTCTGGAACA
 CCTGCAGAGAGATGAGCAGGCCAGTTGGGACAGGCTCCCGGATCCACTGTGCCCAAGCGAAGAGCCA
 ACCACAGACAGCTGGATGGCCAGTGGCAGAGGGAGGCCATGAGCCCTCCAGAAATACCCAAAGGAGTCA
 CTGTATTGCGAGCACCAATCCAGAGCTGAGAAGACCTCGGTCTGAACCTCTAATTAACACAGCACTGA
 GGGCCACAAGATTATCCGGCTCCCAAAAAGCATAAAATTGAACCCCGAGTCTTCCAGGCAAGGCAGGAG
 AAGCTGCTCTGCACTGCACTGAGTCTGGAGCAGCCAAATATCAGGAAGCAGAGCCCTAGGTCTAAGCAGC
 CTTCCCCGAGACAATCAGCCCCAGTGAAGGAGTGAAGGAGTACAGCCGGGAAGCCGCCCTCCACTCC
 AGAGACTGCAGCATCCCAAGCGTCTGCATCTCAGCCTGTAGTAAAGTGGAGTGCCAAAGATCTTTACATT
 GGTGTGTCTACAGTACAGGTGACTGAAATCCGAAGGGGACCAGTGTAGTAAAGGACCGGGCCCTTCCAG
 AGGTGCGCCGAGGGAACCAATGAGCGTCTGATGTTGGCTAACAGAGAGGTGGTGAATACAGAGATGG
 GCCTACCGGGATAGGACAGAGCAGAGGATTGCCCCAGCCCATGGATGATATTACAGTGAACATGATG
 ACCTTGGCGGAGCACATTATCGAGGCCACACCAGACCGAATCAAGCAGGAGAACCTTTGTGCCATGGAAT
 CCTCAGCCTTGGAAAGAAGATCCAGCCACCATTAGCAGTACGATGAGCTGGCTGGCCAGTTACCTAGC
 CGATGCTGACCGTCTGCCAGTGTGCCACATCAGGAGTGCCTACTGAGCCCTGACGCCGTCTTCT
 AATGCCAGCTTGAAGTCCCGCAGGCTCTCCAGTCACTGAGGTGGCTTTGAGAAACCCAGCCTTCCCTCTG
 CGGCAGACTGGTCAAGTCTGAGTGCCTCCACCAGTGAAGGTTGGAGTGGAGTGGAGTGGTCTGAGCTCAC
 ACTGTCCGACCACGAGCAGAGAACTCTATGAAGCTGCCAGGCTTGTCCAGACAGCCTTCCGGAAGTAC
 AAGGGCAGACCCCTCGGGAACAGCAAGAAGTGGCTGCTGCCGTATCCAGCGCTGTACAGGAAGTACA
 AACAGCTGACATGGATAGCCTTGAAGTATGCATTTACAAAAAGATGACCAGGGCGCCATCCTTATCCA
 GAGCAAATCCGAAGTACTATGAGCAGAAGCGGTTCCAGCAGAGCCGGCGCGCTGCAGTGTGATCCAG
 AACTTCTACCGGAGTTACAAGAAGTGTGGCCGGAGACGGCCGGCCGAGGACCGCTGTCATCGTGCAGC
 AGAAGCTCAGGAGCAGTTTGTGACAAAAAGCAGGACCAAGCTGCTCGAAAGATAATGAGGTTTCTGCG
 TCGTGTGCGCCACAGCCCTGGTGGCCATAGGCTGTACAAAAGGAGTGAAGAATTGAAAAAGGCCAA
 GGAAT

AGCGGACCGACGCGTACGCGGCCGCTCGAGCAGAACTCATCTCAGAAGAGGATCTGGCAGCAAATGATATCC
TGGATTACAAGGATGACGACGATAAGGTTAA

Protein Sequence:

>MR226945 representing NM_001081557
Red=Cloning site Green=Tags(s)

MWRAEGKWLPKTSRKSVSQSVFCGTSTYCVLNTVPPIEDDHGNSNSSHVKIFLPKKLLECLPKCSSLPKE
RHRWNTNEEIAAYLITFEKHEEWLTTSPKTRPQNGSMILYNRKKVKYRKDGKCRKRDGKTTREDHMKL
KVQGVCELYGCVVHSSIPTFHRRCYWLLQNPDIIVLVHYLNVPAIEDCGKPCGPILCSINTDKKEWAKWT
KEELIGQLKPMFHGKIKWTCNNGNSSSGFSVEQLVQQILDSHQTKPQPRTHNCLCTGSLGAGSSVHHKCNCS
AKHRIISPKEVPRAGGYGGHSEVQHNDVSEKHEPSSHGRSTSREKRNKGVAKPALLHQNSTEVSSTNQVE
VPDQTQSSPVSISGLNSDPDMVDSVVTGVSSMAVASVMGGLSQSATVFMSEVTNEAVYTMSPTAGPNH
HLLSPDASQGLVLAVSSDGHKFAFPTTGSDDLMLPANVSEELVLSTLDDGGRKIPETAMNFDPCFLN
NPKQGGTYGGGLKAEMVSTNIRHSPPAERSFGFTSVLTKEIKTEDTSFEQQMAKEAAYSSSAAAAASS
LTLTAAGSSLLPSGGGLSPSTTLEQMDFAIDSNKDYASSFSQTGHSPHIHQTPSPSFFLQDASKPLPLE
QNTHSSLSESGAAFMPTVKTEASSQTSSCSGHVETRIESTSSLHLMQFQANFQAMAAEGETMETSQAA
EGNEVLLKSGELQACGSEHYLQPETNGVIRSAGGVPLLPNNVQGLYPVAQPSLGNSSNMELSLDHFDIS
FSNQFSDLINDFISVEGGSGTIYGHQLVSGDAAALQSSEDGARAPFTAEMCIPCCSPQQGSLQLSSAEG
GPSTMAYMHVAEVVSAASAQALGMLQQSGRVFMVTDYSPEWYPEGVVKVITGPWQEAASNNYSCLFDQ
ISVPASLIQPGVLRICYCPAHDGLVTLQVAFNNQIISNSVVFYKARALPTLPSSQHDWLSLDDNQFRMS
ILERLEQMERRMAEMTGSQHKQASGGGSGSGSGAGGGQAQCASGAGTLGSCFESRVVVVCEKMMSR
ACWAKSKHLIHSKTFRGMTHLHLAAQGYATLIQTLIKWRKTHADSIDLELEVDPNVDFHSCTPLMWAC
ALGHLEAAVVLKWDRAISIPDSLGRPLGIARSRGHVLAECLEHLQRDEQAQLGQASRIHCAPSEEP
TTDSWMAQWQREAMSPPEIPKGVTVIASTNPELRRRPREPSNYSTEGHKDYPAPKHKHKNPESFQARQE
KLLCTALSLEQPNIRKQSPRSKQSPETISPSEGVREYSREAAPTPETAAASQASASQPVVKSADLYI
GVSTVQVTGNPKGTSVVKDAAPSQVRPREPMSVLMANREVVNTEMGAYRDRTEHEDCPQPMDDIQVNM
TLAEHIEATPDRIKQENFVPMESALERTDPATISSTMSWLASYLADADRLPSAAHIRSAYTEPLTPSS
NASLSPAGSPVSEVAFEKPSLPSAADWSEFLSASTSEKVESELAQLTSDHEQRELYEAARLVQTAFRKY
KGRPLREQQEVAAAVIQRCYRKYQLTWIALKYALYKMTQAAILIQSKFRSYEQKRFQSSRAAVLIQ
NFYRSYKKGRRRPARRTAVIVQKLRSSLLTKKQDQAARKIMRFLRRCRHSPLVDHRLYKRSERIEKGQ
GT

SGPTRRPLEQKLISEEDLAANDILDYKDDDDKV

Chromatograms:

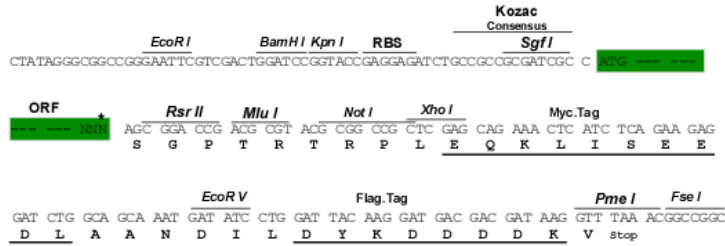
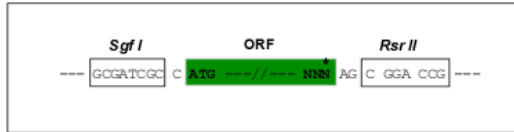
https://cdn.origene.com/chromatograms/mm9105_e02.zip

Restriction Sites:

Sgfl-RsrII

Cloning Scheme:

Cloning sites used for ORF Shuttling:

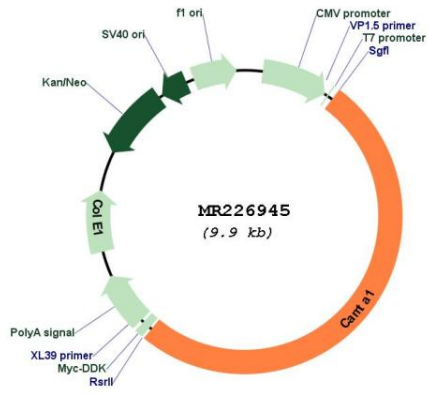


* The last codon before the Stop codon of the ORF

ACCN: NM_001081557
 ORF Size: 5046 bp

OTI Disclaimer:	<p>Due to the inherent nature of this plasmid, standard methods to replicate additional amounts of DNA in E. coli are highly likely to result in mutations and/or rearrangements. Therefore, OriGene does not guarantee the capability to replicate this plasmid DNA. Additional amounts of DNA can be purchased from OriGene with batch-specific, full-sequence verification at a reduced cost. Please contact our customer care team at custsupport@origene.com or by calling 301.340.3188 option 3 for pricing and delivery.</p> <p>The molecular sequence of this clone aligns with the gene accession number as a point of reference only. However, individual transcript sequences of the same gene can differ through naturally occurring variations (e.g. polymorphisms), each with its own valid existence. This clone is substantially in agreement with the reference, but a complete review of all prevailing variants is recommended prior to use. More info</p>
OTI Annotation:	This clone was engineered to express the complete ORF with an expression tag. Expression varies depending on the nature of the gene.
Components:	The ORF clone is ion-exchange column purified and shipped in a 2D barcoded Matrix tube containing 10ug of transfection-ready, dried plasmid DNA (reconstitute with 100 ul of water).
Reconstitution Method:	<ol style="list-style-type: none"> 1. Centrifuge at 5,000xg for 5min. 2. Carefully open the tube and add 100ul of sterile water to dissolve the DNA. 3. Close the tube and incubate for 10 minutes at room temperature. 4. Briefly vortex the tube and then do a quick spin (less than 5000xg) to concentrate the liquid at the bottom. 5. Store the suspended plasmid at -20°C. The DNA is stable for at least one year from date of shipping when stored at -20°C.
RefSeq:	<u>NM_001081557.3</u> , <u>NP_001075026.1</u>
RefSeq Size:	8448 bp
RefSeq ORF:	5049 bp
Locus ID:	100072
UniProt ID:	<u>A2A891</u>
Cytogenetics:	4 E2
MW:	184.3 kDa
Gene Summary:	Transcriptional activator.[UniProtKB/Swiss-Prot Function]

Product images:



Circular map for MR226945