

Product datasheet for **MR226930**

Plagl1 (NM_009538) Mouse Tagged ORF Clone

Product data:

Product Type:	Expression Plasmids
Product Name:	Plagl1 (NM_009538) Mouse Tagged ORF Clone
Tag:	Myc-DDK
Symbol:	Plagl1
Synonyms:	Lot1; Zac1
Mammalian Cell Selection:	Neomycin
Vector:	pCMV6-Entry (PS100001)
E. coli Selection:	Kanamycin (25 ug/mL)



[View online »](#)

ORF Nucleotide
Sequence:

>MR226930 representing NM_009538
 Red=Cloning site Blue=ORF Green=Tags(s)

TTTTGTAATACGACTCACTATAGGGCGGCCGGGAATTCGTCGACTGGATCCGGTACCGAGGAGATCTGCC
 GCC**GCGATCGCC**

ATGGCTCCATTCCGCTGTCAAAAATGTGGCAAGTCTTCGTACCCTGGAGAAGTTCACCATTACAATT
 ATTCCCCTCCAGGGAGCGCCATTCAAGTGCTCGAAGGCTGAGTGTGGCAAAGCCTTCGCTCCAAGTA
 TAAGCTGATGAGACACATGGCCACACACTCGCCACAGAAGATTCACCAGTGTACTACTGTGAGAAGACA
 TTCAACCGGAAGGACCACCTGAAGAACCACCTCCAGACCCACGATCCCAACAAGATCTCCTACGCGTGTG
 ACGATTGCGGCAAGAAGTACCACACCATGCTGGGCTACAAGAGGCACCTGGCCCTGCACTCGGCGAGCAA
 TGGCGATCTCACCTGTGGGTGTGCACCCTGGAGCTGGGAGCACCAGGTCCTGCTGGACCACCTCAAG
 TCTCACGCGAAGAAAAGCCAACCAGGCACCCAGGGAGAAGAAATACCAGTGCAGCCACTGTGATAGAT
 GCTTCTACACCCGAAAGATGTGCGTCGCCACCTGGTGGTCCACACAGGATGCAAGGACTTCTGTGTCA
 GTTCTGTGCCAGAGATTTGGGCGCAAAGACCACCTCACTCGTCACACCAAGAAGACCCACTCCCAGGAG
 CTGATGCAAGAGAATATGCAAGCAGGAGATTACCAGAGCAATTTCCAACCTATTGCGCCTTCAACTTCGT
 TCCAGATAAAGGTTGATCCCATGCCTCCTTTCCAGCTAGGAGCGGCTCCCAGAAACGGGCTTGATGGTGG
 CTTGCCACCCGAGGTTTCAAGTCTAGTCTGCTGCCCAAGAAGAAGCTCCCAACCCATGCCGCCCTTG
 GAGCCTTTGGAGCCTTTGGAGCCTTTGGAGCCTTTGGAGCCGATGAGTCTTTGGAGCCTTTGCAGCCTT
 TGGAGCCGATGCAGCCTTTGGAGCCAATGCAGCCTTTGGAGCCGATGCAGCCTTTAGAGCCTTTGGAGCC
 TCTGGAGCCGATGCAGCCTTTGGAGCCGATGCAGCCTTTGGAGCCTATGCAGCCAATGCTGCCAATGCAG
 CCAATGCAGCCAATGCAGCCAATGCAGCCAATGCTGCCAATGCAGCCAATGCTGCCAATGCAGCCAATGC
 AGCCAATGCAGCCAATGCTGCCAATGCAGCCAATGCTGCCAATGCAGCCAATGCTGCCAATGCAGCCAATGC
 TCCCTCCCAATATTCTTCAGGAGCATAAGTATAATCCTGTTCCTACCTCATATGCCCAATTTGTAGGC
 ATGCCCGTCAAAGCAGATGGCAAGGCTTTTGGCAACGTGGGTTTCTTTGAGGAATTTCTCTGCAAGAGC
 CTCAGGCGCTCTCAAGTTCAACCCATGTTTTGAGATGCCTATGGAGGGTTTGGAAAGTCAACCTGTC
 CAAAGAGCTGCTGGTAGATGCTGTGAATATAGCCATTCTGCCTCTCTGGAGATTTCTCCCTATTGGGG
 TTTTGGCAGCTCCCCCTCTACTCCCCAGAATGGCTTTGTGAATAGCACCATCCCTGTGGGGCCTGGGG
 AGCCACTGCCCCATAGGATAACCTGTCTGGCGCAGCAGCCACCGCCACTGCCGCCGCCACCACCGCT
 GCCACTGCCACAGCCACTGCCAGTGCCACAGCCACTACCACAGCCACAGATGCAGCCACAGTTTCAGTTG
 CAGATCCAGCCCCAGATGCAGCCCCAGATGCAGCTGCAGCCACTGCAGCTGCAGTACCACAGCTGCTGC
 CGCAACTGCAACCTCAGCAGCAGCTGATCCTGAGCCAGAGCCAGAGCCAGAGCCAGAGCCAGAGCCAGA
 GCCAGAGCCGGAACCGGAACCGGAGCCAGAGCCAGAGCCAGAACCAGAGCCAGAGGAAGAAGAGGAGAG
 GCAGAAGAAGAGGAGAGGAAGGAGCAGAGGAAGGAGCAGAACCAGAGGCACAGGAGGAAGAAGAGGAG
 AGGAAGAGGAAGCGGAAGAGCCACAGCCAGAAGAAGCCAAATAGCAGTGAGTGTGTAATCTGGGCCA
 GCCCCCCCTACCCCAACTCCCCATATTTTACAGCTGGCTCCAACACTGCTATCCTGCCCCATTTCCAT
 CACGCATTTAGA

AG**GCGACCG**ACGCGTACGCGCCGCTCGAGCAGAAACTCATCTCAGAAGAGGATCTGGCAGCAAATGATATCC
 TGGATTACAAGGATGACGACGATAAGGTTTAA

Protein Sequence: >MR226930 representing NM_009538
 Red=Cloning site Green=Tags(s)

MAPFRCQKCGKSFVTLEKFTIHNYSHSRERPFKCSKAECGKAFVSKYKLMRHMATHSPQKIHQCTHCEKT
 FNRKDHLKNHLQTHDPNKISYACDDCGKKYHTMLGYKRHLALHSASNGDLTCGVCTLELGSTEVLLDHLK
 SHAEEKANQAPREKKYQCDHCDRCFYTRKDVRRHLVVHTGCKDFLCQFCAQRFGRKDHLTRHTKKTHSQE
 LMQENMQAGDYQSNFQLIAPSTSFQIKVDPMPFFQLGAAPENGLDGGLPPEVHGLVLAAPPEEAPQMPPL
 EPLEPLEPLEPLEMQSLEPLQPLEPMQPLEPMQPLEPMQPLEPLEPLEPMQPLEPMQPLEPMQPLEPMQ
 PMQ
 MPVKADGKAFCNVGFEEFPLQEPQAPLKFNCPFEMPMEGFGKVTLSKELLVDVNIAIPASLEISSLLG
 FWQLPPPPTQNGFVNSTIPVGPGEPLPHRITCLAQQPPPLPPPPLPLPQPLVPQPLPQPMQPMQPMQ
 QIQPMQPMQMLQPLQLQLPQLPQLPQLPQLPQLPQLPQLPQLPQLPQLPQLPQLPQLPQLPQLPQLP
 AEEEEAEEGAEEGAPEAQAEAAAAAAAAAEEPQEEAQIAVSAVNLGQPPLPPTPHIFTAGSNTAILPHFH
 HAFR

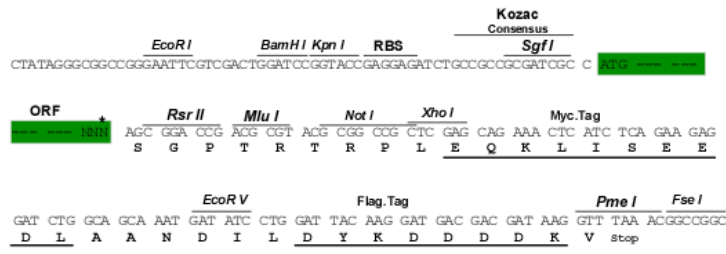
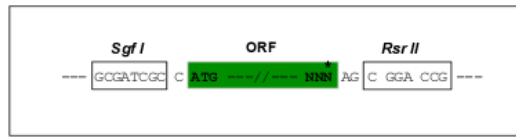
SGPTRTRPLEQKLI SEEDLAANDILDYKDDDDKV

Chromatograms: https://cdn.origene.com/chromatograms/mm9107_h09.zip

Restriction Sites: SgfI-RsrII

Cloning Scheme:

Cloning sites used for ORF Shutting:



* The last codon before the Stop codon of the ORF

ACCN: NM_009538
ORF Size: 2112 bp

OTI Disclaimer: Due to the inherent nature of this plasmid, standard methods to replicate additional amounts of DNA in E. coli are highly likely to result in mutations and/or rearrangements. Therefore, OriGene does not guarantee the capability to replicate this plasmid DNA. Additional amounts of DNA can be purchased from OriGene with batch-specific, full-sequence verification at a reduced cost. Please contact our customer care team at custsupport@origene.com or by calling 301.340.3188 option 3 for pricing and delivery.

The molecular sequence of this clone aligns with the gene accession number as a point of reference only. However, individual transcript sequences of the same gene can differ through naturally occurring variations (e.g. polymorphisms), each with its own valid existence. This clone is substantially in agreement with the reference, but a complete review of all prevailing variants is recommended prior to use. [More info](#)

OTI Annotation: This clone was engineered to express the complete ORF with an expression tag. Expression varies depending on the nature of the gene.

Components: The ORF clone is ion-exchange column purified and shipped in a 2D barcoded Matrix tube containing 10ug of transfection-ready, dried plasmid DNA (reconstitute with 100 ul of water).

Reconstitution Method:

1. Centrifuge at 5,000xg for 5min.
2. Carefully open the tube and add 100ul of sterile water to dissolve the DNA.
3. Close the tube and incubate for 10 minutes at room temperature.
4. Briefly vortex the tube and then do a quick spin (less than 5000xg) to concentrate the liquid at the bottom.
5. Store the suspended plasmid at -20°C. The DNA is stable for at least one year from date of shipping when stored at -20°C.

RefSeq: [NM_009538.3](#)

RefSeq Size: 5279 bp

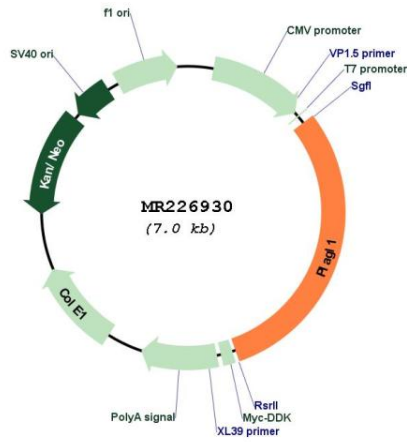
RefSeq ORF: 2115 bp

Locus ID: 22634

Cytogenetics: 10 4.72 cM

MW: 79.2 kDa

Product images:



Circular map for MR226930