

Product datasheet for **MR226911**

Nrg1 (NM_178591) Mouse Tagged ORF Clone

Product data:

Product Type:	Expression Plasmids
Product Name:	Nrg1 (NM_178591) Mouse Tagged ORF Clone
Tag:	Myc-DDK
Symbol:	Nrg1
Synonyms:	6030402G23Rik; ARIA; D230005F13Rik; GGF; GGFII; Hgl; HRG; HRGalpha; NDF; SMDF
Mammalian Cell Selection:	Neomycin
Vector:	pCMV6-Entry (PS100001)
E. coli Selection:	Kanamycin (25 ug/mL)



[View online »](#)

ORF Nucleotide
Sequence:

>MR226911 representing NM_178591
Red=Cloning site Blue=ORF Green=Tags(s)

TTTTGTAATACGACTCACTATAGGGCGGCCGGGAATTCGTCGACTGGATCCGGTACCGAGGAGATCTGCC
GCC**CGGATCGCC**

ATGGAGATTTATCCCCAGACATGTCTGAGGGAGCTGGCGGGAGGTCCTCCAGCCCTCCACTCAGCTGA
GTGCAGACCCATCTCTCGATGGGCTTCCGGCAGCGGAACATATGCCAGACACCCACAGAAAGATGGGAG
AAGCCCTGGACTCCTGGCCTGGCCGTGCCCTGTGTCTGCCTGGAAGCGGAGCGTCTCAGAGGGTGC
CTCAACTCCGAGAAGATCTGCATTGTTCCATTCTGGCTGTCTAGTAAGCCTCTGCCTCTGCATTGCTG
GCCTAAAGTGGGTATTTGTGGACAAGATATTCGAATACGACTCTCTACCCACCTTGACCCTGGGGGGTT
AGGCCAGGACCCTGTTATTTCTCTGGATCCAACGGCTGCCTCCGCTGTTCTGGTCTCATCCGAGGCATAC
ACTTCACCTGTCTAAGGCTCAGTCTGAAGCCGAGGCTCATGTTACAGGGCAAGGTGACCATGTCGCTG
TGGCCTCTGAACCTTCCGCAGTACCCACCCGGAAGAACC GGCTGTCTGCTTTTCTCCCTTACACTCCAC
TCCACCGCCCTTCCCTTCTCCAGCTCGGACCCCTGAGGTGAGAACACCCAAGTCAGGAACCTCAGCCACAA
ACAACAGAAACTAATCTGCAAACTGCTCCTAAACTTTCCACATCTACATCCACGACTGGGACCAGCCATC
TCATAAAGTGTGCGGAGAAGGAGAAAATTTCTGTGTGAATGGAGGCGAGTGCTTCATGGTGAAGGACCT
GTCAAACCCCTCAAGATACTTGTGCAAGTGCCCAAATGAGTTTACTGGTGATCGTTGCCAAAACCTACGTA
ATGGCCAGCTTCTACAAGCATCTGGGATTGAATTTATGGAAGCGGAGGAGCTCTACCAGAAGAGGGTAC
TGACAATTACTGGCATCTGTATCGCCCTGTTGGTGGTCCGCATCATGTGTGTGGTGGCCTACTGCAAAAC
CAAGAAACAGCGGCAGAAAGCTTCATGATCGGCTCCGGCAGAGCCTTCGGTCAAGCAAAACAATGGTG
AACATAGCGAATGGCCCTCACCATCAAACCCACCAGAGAATGTGCAACTGGTGAATCAATATGTAT
CTAAAAACGTCACTCCAGTGAGCATATTTGGAGAGAGAAGTGGAGACCTCCTTTTCCACCAGTCACTA
CACTTCCACAGCTCATCACTCCAGACTGTCACCCAGACTCCTAGTCACAGCTGGAGTAATGGGCACACA
GAAAGCATCATTTAGAAAAGCCACTCTGTAAATCATGATGTCATCGGTAGAGAACAGCAGGCACAGCAGCC
CAGCTGGGGGCCACGAGGACGTCTTCATGGCCTGGGAGGCCCTCGGAATGTAACAGCTTCTCAGGCA
TGCCAGAGAAACCCCTGACTCCTACAGAGACTCTCCTCATAGTAAAGGTATGTATCAGCCATGACCACC
CCGGCTCGTATGTCACCTGTAGATTTCCACAGCCAAGCTCCCTAAATCGCCCCCTTCGAAATGTCTC
CACCCGTGTCCAGCATGACGGTGTCCATGCCCTCTGTGGCAGTCAGCCCCCTTGTGGAAGAAGAGAGGCC
TCTGCTTCTTGTGACGCCACCGAGGCTACGGGAGAAGAAGTATGATCATCACCCAGCAACTCAACTCC
TTTCATACAACCTGCACATCAGAGTACCAGCCTCCCCCTAGCCATTGAGGATAGTGGAGGATGAGG
AATACGAAACGACCCAGGAGTATGAGCCAATTCAGAGCCTATTAAGAAAGTCACCAATAGCCGGCGGGC
CAAAAGAACCAAGCCCAATGGCCACATTGCCAATAGGTTGAAATGGACAGCAACCCAAGTTCTGTGAGC
AGTAACTCAGAAAGTGAAGACAGAAGATGAAAGAGTAGGTGAAGATACACCATTCTGGGCATACAGAACC
CCCTGGCAGCCAGCCTTGAGGTGGCCCTGCCTTCCGTCTGGCTGAGAGCAGGACTAACCAGCAGGCCG
CTTCTCCACACAGGAAGAATTACAGGCCAGGCTGTCTAGTGAATCGCTAACCAAGACCCTATTGCTGTA

ACGCGTACGCGGGCCGCTCGAGCAGAAACTCATCTCAGAAGAGGATCTGGCAGCAATGATATCCTGGATT
ACAAGGATGACGACGATAAGGTTTAA

Protein Sequence: >MR226911 representing NM_178591
Red=Cloning site Green=Tags(s)

```
MEIYPPDMSEGAGGRSSSPSTQLSADPSLDGLPAAEHMPDTHTEDGRSPGLLGLAVPCCVCLEAERLRGC
LNSEKICIVPILACLVSLLCLCIAGLKWVFDKIFEYDSPHTLDPGGLGQDPVISLDPTAASAVLVSEAY
TSPVSKAQSEAEAHVTGQGDHVAVASEPSAVPTRKNRLSAFPPLHSTPPFPSPARTPEVTRPKSGTQPQ
TTETNLQTAPKLSTSTTTGTSHLIKCAEKEKTFVNGGECFMVKDLSNPSRYLCKCPNEFTGDRCQNYV
MASFYKHLGIEFMEAEELYQKRVLTITGICIAALLVVGIMCVVAYCKTKKQRQKLHDLRQSLRSENNMV
NIANGPHHPNPPPENVQLVNQYVSKNVISSSEHIVEREVETSFSTSHYTSTAHHSTTVTQTPSHSWSNGHT
ESIISSEHSVIMSSVENSRHSSPAGGPRRLHGLGPPRECNSFLRHARETPDSYRDSPHSERYVSAMTT
PARMSPVDFHTPSSPKSPSEMSPVSSMTVSMPSVAVSPFVEEERLLLVTPPRLREKKYDHPQQLNS
FHHNPAHQSTSLPPSPLRIVEDEEYETTQEYEQEPIKKVTNSRRAKRTKPNGHIANRLEMDSNPSSVS
SNSESETEDERVGEDTPFLGIQNPLAASLEVAPAFRLAESRTNPAGRFSTQEELQARLSSVIANQDPIAV
```

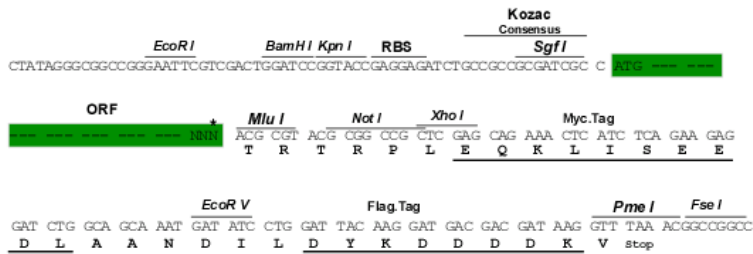
TRTRPLEQKLISEEDLAANDILDYKDDDDKV

Chromatograms: https://cdn.origene.com/chromatograms/ja1274_d10.zip

Restriction Sites: SgfI-MluI

Cloning Scheme:

Cloning sites used for ORF Shuttling:



* The last codon before the Stop codon of the ORF

ACCN: NM_178591

ORF Size: 2100 bp

OTI Disclaimer: The molecular sequence of this clone aligns with the gene accession number as a point of reference only. However, individual transcript sequences of the same gene can differ through naturally occurring variations (e.g. polymorphisms), each with its own valid existence. This clone is substantially in agreement with the reference, but a complete review of all prevailing variants is recommended prior to use. [More info](#)

OTI Annotation: This clone was engineered to express the complete ORF with an expression tag. Expression varies depending on the nature of the gene.

Components: The ORF clone is ion-exchange column purified and shipped in a 2D barcoded Matrix tube containing 10ug of transfection-ready, dried plasmid DNA (reconstitute with 100 ul of water).

Reconstitution Method:

1. Centrifuge at 5,000xg for 5min.
2. Carefully open the tube and add 100ul of sterile water to dissolve the DNA.
3. Close the tube and incubate for 10 minutes at room temperature.
4. Briefly vortex the tube and then do a quick spin (less than 5000xg) to concentrate the liquid at the bottom.
5. Store the suspended plasmid at -20°C. The DNA is stable for at least one year from date of shipping when stored at -20°C.

RefSeq: [NM_178591.3](#)

RefSeq Size: 2103 bp

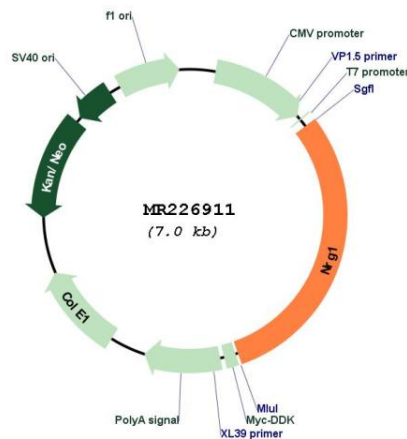
RefSeq ORF: 2103 bp

Locus ID: 211323

Cytogenetics: 8 A3

MW: 77 kDa

Product images:



Circular map for MR226911