

## Product datasheet for **MR226890**

### **Csf2rb (NM\_007780) Mouse Tagged ORF Clone**

#### **Product data:**

Product Type:	Expression Plasmids
Product Name:	Csf2rb (NM_007780) Mouse Tagged ORF Clone
Tag:	Myc-DDK
Symbol:	Csf2rb
Synonyms:	A1848964; A1C2B; Bc; CDw131; Csf2rb1; Csfgmrb; I13r; I13rb; I13rb1; I15rb
Mammalian Cell Selection:	Neomycin
Vector:	pCMV6-Entry (PS100001)
E. coli Selection:	Kanamycin (25 ug/mL)



[View online »](#)

ORF Nucleotide  
Sequence:

>MR226890 ORF sequence  
 Red=Cloning site Blue=ORF Green=Tags(s)

TTTTGTAATACGACTCACTATAGGGCGGCCGGGAATTCGTCGACTGGATCCGGTACCGAGGAGATCTGCC  
 GCC**CGGATCGCC**

ATGGACCAGCAAATGGCACTCACATGGGGCTGTGCTACATGGCACTGGTGGCTCTCTGTTGGGGACAGC  
 GGGTGACAGAGGCAGAAGAAACGGTCCCTCTGAAGACTCTGCAGTGCTACAATGACTACACCAACCCAT  
 CATCTGCAGCTGGCGGCACAGAGGATGCCAGGGGCTAATCAACATGACCCTCTATCACCAGCTAGAG  
 AAAAAACAGCCAGTGTCTGTGAGCTCAGTGAGGAACTCATGTGGTCAGAGTGCCCGTCATCCCACCGCT  
 GTGTGCCAGAAGATGTGTATCCCTATACAGATTTTCCATCACAACGAAGACTACTACTCCTTCCG  
 GCCAGATAGTGATCTGGGCATCCAGCTCATGGTCCACTTGCCAGAATGTGCAGCCACCACTTCCCAAG  
 AACGTCAGCATCAGCTCCTCTGAGGATCGTTTCTGCTGGAGTGGAGTGTGTCCCTTGGGGATGCCAGG  
 TCTCTGGCTTTCATCAAAGGACATAGAGTTTGGAGTGGCTTATAAGCGGCTTCAGGACTCCTGGGAGGA  
 TGCCACAGTCTCCACTAGCAAATTTCAAGTGAATTTGAGCCAAAGCTATTCCTACCCAACAGCATC  
 TATGCTGCCCGTGTGCGCACTCGGCTGTCCCGGGTTCAAGCTTGTCTGGGAGACCCAGCAGATGGAGCC  
 CAGAGGTTCACTGGGACTCCCAGCCAGGGGACAAGGCCAGCCACAGAACCTTCAATGCTTCTTTGATGG  
 GATCCAGTCCCTCCACTGCTCCTGGGAGGTGTGGACCCAGACGACTGGCTCTGTTTCTTTGGGCTCTTC  
 TATCGCCCCAGCCCTGTAGCTCCGGAGGAGAAATGCTCTCCGGTGGTGAAGGAGCCCGCGGGGGCCAGTG  
 TCTACACCCGCTACCATTGCACTACCTGTGCCTGAGCCAGTGACACAGCCAGTACACAGTCTCTGT  
 TAAGCACCTGGAACAAGGAAGTTCATCATGAGCTATAACCACATCCAGATGGAGCCTCCAACCTCAAC  
 CTGACCAAGAACAGAGACAGCTACAGCCTGCATTGGGAACTCAGAAGATGGCTTACTCATTATTGAGC  
 ACACATTCAGGTCAGTACAAGAAGAAATCGGACAGCTGGGAGGACAGCAAGACAGAGAACCCTAGATCG  
 AGCCCATAGCATGGACCTCTCCAGCTGGAGCCAGACACCTCATACTGCGCCAGGGTGAAGGTTCAAGCCC  
 ATCTCTAACTACGATGGGATCTGGAGCAAGTGGAGCGAAGAGTACACTTGAAGACTGACTGGGTGATGC  
 CCACGCTGTGGATAGTCCTCATCTGGTCTTTCTCATCCTCACCTTGCTCCTGATCCTTCGCTTTGGCTG  
 TGTCTCTGTATACAGGACGTACAGGAAGTGAAGGAAAAGATCCCCAACCCAGCAAGAGCCTCCTGTTT  
 CAGGATGGAGGTAAGGTCTCTGGCCTCCTGGCAGCATGGCAGCCTTCGCCACTAAGAACCCCGCTCTCC  
 AGGGGCCACAGAGCAGGCTTCTGCTGAGCAACAGGGGGAGTCATATGCACATTTGAAGACAACAACGT  
 GTCACCTCTCACTATAGAGGACCCTAATAATAATTCGAGTTCACCATCCGGGCTGATACAACCCAGCT  
 GCCTCATCCGAATCCACAGAGCAACTTCCCAATGTTCAAGTAGAGGGACCAACTCCTAACAGACCTAGGA  
 AGCAATACCCAGCTTTGACTTCAATGGGCCCTACCTGGGGCCTCCCCAATCCCCTCTCTGCTGATCT  
 CCCAGACCAGCTGGGTTCCCCCAGGTGGTGGGAGCCTGAAGCCAGCACTGCCAGGCTCCTTGGAGTAC  
 ATGTGTCTGCCCCCTGGAGGTCAAGCGCAACTGGTTCCATTGTCCAGGTGATGGGGCAGGGCCAGGCTA  
 TGGATGTGCAGTGTGGTCCAGCCTGGAGACCTCAGGGAGCCCTTCCGTGGAGCCAAAGGAGAACCCTCC  
 AGTTGAGCTGAGCATGGAGGAACAGGAGGCACGGGACAACCCAGTGACTTGCCCATAGCTCTGGGGGC  
 CCTGAGGGCAGTATGATGGCCTCTGATTATGCTACTCCTGGAGATCCGGTGTCTACTCTGCCACAGGGC  
 CCCTGTACTCTCTGGGCCCTCTTAGGTTGCCCTCAGCCAAAGCCCCGTCTGTCTTAAGCT  
 GCCCAGGTCCTCTGGAAGCCAGCTTAGGGCCACCAGGTTTGGAGACTATGTGGAGCTGCCTCCA  
 AGTGTGAGCCAGGCTGCCAAGTCCCCTCCAGGCCATCCTGCTCCTGTGGCAAGCAGCCACAGTGA  
 TCCAGGAGAGCCAGGAGGAAGTGGGCCAGCATCCCCACATCCCGAAGGCCTCCTTGTCTTTCAGCA  
 GGTGGGGACTACTGTTCTCCTGGCCTGGACCTGGCTCCCTCTCACCACACAGTAAGCCACCTCT  
 CCAAGTCTGTGTTCTGAGACTGAGGACCTAGTCCAGGACTTGTCTGTCAAAAAGTTTCCCTATCAGCCCA  
 TGCCCCAGGGCCAGCCATTAGTTTTTCAAGTCCCTAAAGCATCAGGACTACCTGTCCCTGCCCTTG  
 GGACAATAGCCAGTCTGGGAAGGTGTGC

**ACGCGT**ACGCGGCCGCTCGAGCAGAACTCATCTCAGAAGAGGATCTGGCAGCAAATGATATCCTGGATT  
 ACAAGGATGACGACGATAAGGTTTAA

Protein Sequence: >MR226890 protein sequence  
 Red=Cloning site Green=Tags(s)

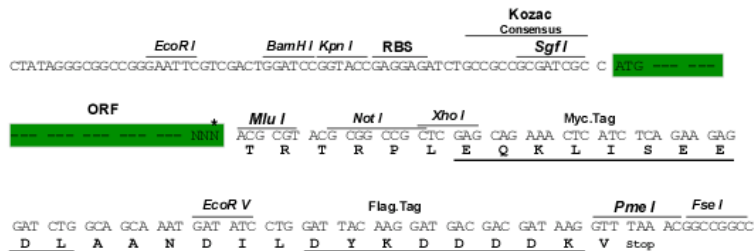
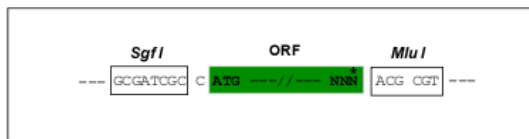
MDQQMALTWGLCYMALVALCWGHGVTEAETVPLKTLQCYNDYTNHIICSWADTEDAQGLINMTLYHQLE  
 KKQPVSCELSEELMWSECPSSSHRCVPRRCVIPYTRFSITNEDYYSFRPDSLGIQLMVPLAQNVQPPLPK  
 NVSISSEDRFLLEWSVSLGDAQVSWLSSKDIEFEVAYKRLQDSWEDAYSLHTSKFQVNFEPKFLFPNSI  
 YAARVTRLSPGSSLGRPSRWSPVEVHWSQPGDKAQPNLQCFDFGIQSLHCSWEVWTQTGTSVSFGLF  
 YRPSVPAPEEKSPVVKPEPPGASVYTRYHCSLPVPEPSAHSQYTVSVKHLEQGKFIMSYNHIQMEPPTLN  
 LTKNRDSYSLHWETQKMAYSFIEHTFQVQYKKKSDSWEDSKTENLDRAHSMDLSQLEPDTSYCARVRVKP  
 ISNYDGIWSKWSEEYTWKTDWVMPTLWIVLILVFLILLLLILRFGCVSVYRTRYKWKKEIPNPSKSLLF  
 QDGGKGLWPPGMAAFATKPNALQGPQSRLLAQQGESYAHLEDNNVSPLTIEDPNIIRVPPSGPDTTPA  
 ASSESTEQLPNVQVEGPTPNRPRKQLPSDFNGPYLGPQSHSLPDLPDQLGSPQVGGSLKPALPGSLEY  
 MCLPPGGQAQLVPLSQVMGQQAAMDVQCGSLETSGSPSVEPKENPPVELSMEEQEARDNPVTLPISSGG  
 PEGSMASDYVTPGDPVLTLPSTSLGPSLGLPSAQSPRLCLKLPRVPSGSPALGPPGFEDYVELPP  
 SVSQAASPPGHPAPPVASSPTVIPGEPREEVGPASPHPEGLLVLQQVGDYCFPLPGLGPGSLSPHSKPPS  
 PSLCSETEDLVQDLVSKKFPYQMPQAPAIQFFKSLKHQDYLSLPPWDNSQSGKVC

TRTRPLEQKLISEEDLAANDILDYKDDDDKV

Restriction Sites:  
 Cloning Scheme:

Sgfl-MluI

Cloning sites used for ORF Shuttling:

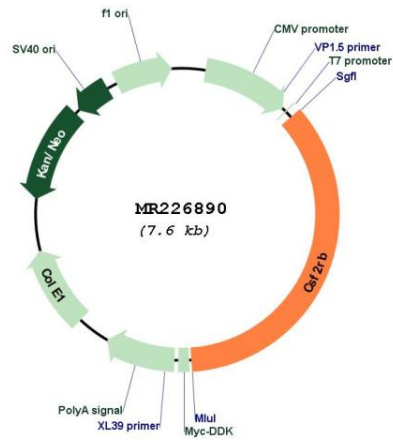


\* The last codon before the Stop codon of the ORF

ACCN: NM\_007780

<b>ORF Size:</b>	2691 bp
<b>OTI Disclaimer:</b>	The molecular sequence of this clone aligns with the gene accession number as a point of reference only. However, individual transcript sequences of the same gene can differ through naturally occurring variations (e.g. polymorphisms), each with its own valid existence. This clone is substantially in agreement with the reference, but a complete review of all prevailing variants is recommended prior to use. <a href="#">More info</a>
<b>OTI Annotation:</b>	This clone was engineered to express the complete ORF with an expression tag. Expression varies depending on the nature of the gene.
<b>Components:</b>	The ORF clone is ion-exchange column purified and shipped in a 2D barcoded Matrix tube containing 10ug of transfection-ready, dried plasmid DNA (reconstitute with 100 ul of water).
<b>Reconstitution Method:</b>	<ol style="list-style-type: none"><li>1. Centrifuge at 5,000xg for 5min.</li><li>2. Carefully open the tube and add 100ul of sterile water to dissolve the DNA.</li><li>3. Close the tube and incubate for 10 minutes at room temperature.</li><li>4. Briefly vortex the tube and then do a quick spin (less than 5000xg) to concentrate the liquid at the bottom.</li><li>5. Store the suspended plasmid at -20°C. The DNA is stable for at least one year from date of shipping when stored at -20°C.</li></ol>
<b>RefSeq:</b>	<a href="#">NM_007780.3</a>
<b>RefSeq Size:</b>	4776 bp
<b>RefSeq ORF:</b>	2691 bp
<b>Locus ID:</b>	12983
<b>UniProt ID:</b>	<a href="#">P26955</a>
<b>Cytogenetics:</b>	15 37.36 cM
<b>MW:</b>	99.1 kDa
<b>Gene Summary:</b>	High affinity receptor for interleukin-3, interleukin-5 and granulocyte-macrophage colony-stimulating factor.[UniProtKB/Swiss-Prot Function]

Product images:



Circular map for MR226890