

## Product datasheet for **MR226886**

### Hdx (NM\_001080549) Mouse Tagged ORF Clone

#### Product data:

Product Type:	Expression Plasmids
Product Name:	Hdx (NM_001080549) Mouse Tagged ORF Clone
Tag:	Myc-DDK
Symbol:	Hdx
Synonyms:	D030011N01Rik; Gm380
Mammalian Cell Selection:	Neomycin
Vector:	pCMV6-Entry (PS100001)
E. coli Selection:	Kanamycin (25 ug/mL)



[View online »](#)

**ORF Nucleotide Sequence:**

>MR226886 representing NM\_001080549  
 Red=Cloning site Blue=ORF Green=Tags(s)

TTTTGTAATACGACTCACTATAGGGCGGCCGGAATTCGTGCGACTGGATCCGGTACCGAGGAGATCTGCC  
 GCC**CGCATCGCC**

ATGAATCTACGTTCTGTATTTACTGTAGAGCAACAAAGGATTTTACAGCGTTATTATGAAAATGGAATGA  
 CAAATCAAAGTAAAAATTGCTTTTCAGCTCATATTACAGTGTGCACAGGAGACTAAGCTGGACTTCAGTGT  
 AGTCAGGACGTGGGTTGGCAATAAGCGAAGAAAAATGAGTAGTAAAAGCTGTGAATCAGGAGCAGCAGGA  
 ACTGTGTCTGGTACCTCATTGGCAGCGCCAGACATTACAGTCAGAAATGTGGTTAATATTGCCCGCCCTT  
 CAAGCCAGCAATCTTCTGGACTTCTGCCAATAATGATGTCATTGTAAGTGGTATATACAGTCCAGTAAG  
 CTCATCAAGTAAGCAAGGCACTACAAAGCATACAAATACACAAATTACAGAAGCACATAAAAATTCCTATT  
 CAGAAGGCAGCCAATAAAAAATGACTGAATTACAATTGCACATTCCTGTTCAAAGACAAGTAGCGCACT  
 GTAAGAATGCTTCTGTGCTCCTAGGGGAAAAGACAATTATTTGTCAAGACAGACAAGTGTACTAAATGC  
 TGGAAACTCAGTGTACAATCACACAAAGAAAAGCTATGGAAGTTCCTCGGTGCAAGCTTCAGAAATGACA  
 GTACCTCAAAGCCATCTGTGTGCCAGCGACCTTGCAAAATTGAACCAAGTTGGGATTCAAAGGTCATATA  
 AACCTGAACATGCAGGTCTGGCATCACATAACTTATGTGGGCAAAAGCCAACCATTAGAGACCCTTGCTG  
 TAGAACACAAAATTGGAAATTCGTGAAGTGTTCATTGGCAGTCAGTATTACCCTCAGAGAATTCTG  
 GGAGGAAATAGCACACAGAAGCCGGCCTCAGCAGAAGGAAGTGTTCATTGGCAGTCAATGGGAGCACAATAACAAGCTACTCAAG  
 ACGCAGAGGATGAATATGCCAGAGAAGAAGAACTGGCATCAATGGGAGCACAATAACAAGCTACTCAAG  
 GTTTTATGAAAGTGGCAATTCCTTCGAGCTGAGAACCAAGTACAAATTTGCCTGGACCAGGAAGAAAC  
 CTGCCAAATTCACAAATGGTGAATATTAGAGATTTGTGAGCAATGTACTGTATCAGACTAGAGACTACC  
 ATTTGACACCACCGACCTCATTGCATACAGCATCTAGTACTATGTACAGTAATACTAATCCATCACGGAG  
 TAATTTTTCTCCACATTTTGATCATCAAACCAACTGAGGTTATCACAAAACCAAAACAATTACCAGATT  
 TCAGGAAACCTTTCTGTGCCTTGGATTACAGGGTGTCTAGGAAAAGAGCACTACAGGACCAGCACTCAAT  
 TCAGTGACCGAGACTTGCTACTCTTAAGAAGTACTGGGACAATGGTATGACCAGCCTGGGCTCTGTATG  
 TAGAGAGAAGATTGAAGCTGTTGCAATTGAATTAATGTCGACTGTGAAATAGTTCGGACTTGGATTGGG  
 AATCGAAGAAGAAAAACCGTTTAAATGGGAATTGAAGTCCACCTCCAAGAGGAGGCCCTGCTGATTTCT  
 CTGAGCAGCCTGAGTCTGGTCTTTGTCTGCACTCACACCAGGAGAGGAAGCTGGGCCTGAAGTAGGAGA  
 GGATAATGACAGAAATGATGAAGTGTCCATCTGTTTGTCCGAAGCAAGCTCTCAAGAGGAGTCCAATGAA  
 CTTATCCCAAATGAGACCAGGGCACATAAGGATGAAGAGCACCAGGCAGTATCTGCAGATAATGTGAAAA  
 TAGAAATTATCGATGATGAAGAAAGTGACATGATAAGCAATTCTGAGGTAGAACAAGAAAATTTCTCTCT  
 GGATTACAAGAATGAAGAAGTCAGATTTATTGAAAATGAGCTAGAGATTCAAAAGCAAAAATACTTTAAG  
 CTCCAGTCTTTTGTAGAAACCTGATTCTCGCTATGAAAGCTGATGATAAAGACCAGCAGCAGGCACTGC  
 TGTGAGATTTACCTCCAGAATTAGAAGAGATGGATTGCAGTCAATGCCTCGCCGGATCCTGATGATACCTC  
 ACTCAGTGTGCTCTTTATCAGAGAAAAATGCCTCAGACAGCTTG

**ACGCGT**ACGCGGCCGCTCGAGCAGAACTCATCTCAGAAGAGGATCTGGCAGCAATGATATCCTGGATT  
 ACAAGGATGACGACGATAAGGTTTAA

**Protein Sequence:** >MR226886 representing NM\_001080549  
 Red=Cloning site Green=Tags(s)

```

MNLRSVFTVEQQRILQRYYENGMTNQSKNCFQLILQCAQETKLDKFSVVRTWVGNKRRKMSKSCESGAAG
TVSGTSLAAPDITVRNVVNIARPSSQSSWTSANNDVIVTGIYSPVSSSSKQGTTKHTNTQITEAHKIPI
QKAANKNDELQLHIPVQRQVAHCKNASVLLGEKTIILSRQTSVLNAGNSVYNHTTKSYGSSPVQASEMT
VPQKPSVCQRPKIEPVGIQRSYKPEHAGLASHNLGQKPTIRDPCCRQTQNLLEIREVFLAVSDYPQRIL
GGNSTQKPASAEGTCLSIAMETGDAEYAREEELASMGQAITSYSRFYESGNSLRAENQSTNLPGPGRN
LPNSQMVNIRDLSDNVLYQTRDYHLTPRTSLHTASSTMYSNTPSRSNFSPHFVSSNQLRLSQNNYQI
SGNLVSPWITGCSRKRALQDRQFSDRDLATLKKYWDNGMTSLGVSVCREKIEAVAIELNDCEIVRTWIG
NRRRKYRLMGIEVPPRGGPADFSEQPESGSLSALTPGEEAGPEVGEDNDRNDEVSICLSEASSQEESNE
LIPNETRAHKDEEHQAVSADNVKIEIIDDESDMISNVEVEQENSLLDYKNEEVRFIENELEIQKQKYFK
LQSFVRNLILAMKADDKQOQALLSDLPPELEEMDCSHASPD PDDTSLSVSSLSEKNASDSL
    
```

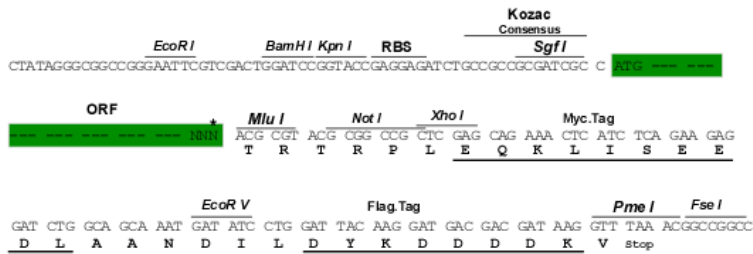
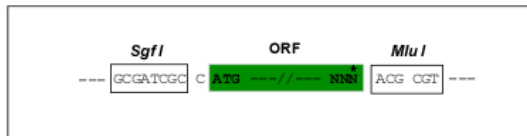
TRTRPLEQKLISEEDLAANDILDYKDDDDKV

**Chromatograms:** [https://cdn.origene.com/chromatograms/mm9099\\_e05.zip](https://cdn.origene.com/chromatograms/mm9099_e05.zip)

**Restriction Sites:** SgfI-MluI

**Cloning Scheme:**

Cloning sites used for ORF Shuttling:



\* The last codon before the Stop codon of the ORF

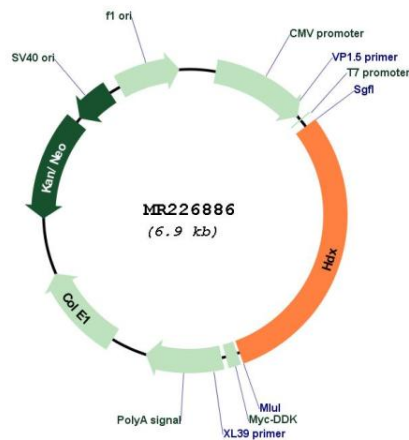
**ACCN:** NM\_001080549

**ORF Size:** 2076 bp

**OTI Disclaimer:** The molecular sequence of this clone aligns with the gene accession number as a point of reference only. However, individual transcript sequences of the same gene can differ through naturally occurring variations (e.g. polymorphisms), each with its own valid existence. This clone is substantially in agreement with the reference, but a complete review of all prevailing variants is recommended prior to use. [More info](#)

**OTI Annotation:** This clone was engineered to express the complete ORF with an expression tag. Expression varies depending on the nature of the gene.

<b>Components:</b>	The ORF clone is ion-exchange column purified and shipped in a 2D barcoded Matrix tube containing 10ug of transfection-ready, dried plasmid DNA (reconstitute with 100 ul of water).
<b>Reconstitution Method:</b>	<ol style="list-style-type: none"> <li>1. Centrifuge at 5,000xg for 5min.</li> <li>2. Carefully open the tube and add 100ul of sterile water to dissolve the DNA.</li> <li>3. Close the tube and incubate for 10 minutes at room temperature.</li> <li>4. Briefly vortex the tube and then do a quick spin (less than 5000xg) to concentrate the liquid at the bottom.</li> <li>5. Store the suspended plasmid at -20°C. The DNA is stable for at least one year from date of shipping when stored at -20°C.</li> </ol>
<b>RefSeq:</b>	<u>NM_001080549.2, NP_001074018.1</u>
<b>RefSeq Size:</b>	4261 bp
<b>RefSeq ORF:</b>	2079 bp
<b>Locus ID:</b>	245596
<b>UniProt ID:</b>	<u>Q14B70</u>
<b>Cytogenetics:</b>	X E1
<b>MW:</b>	76.9 kDa

**Product images:**


Circular map for MR226886