

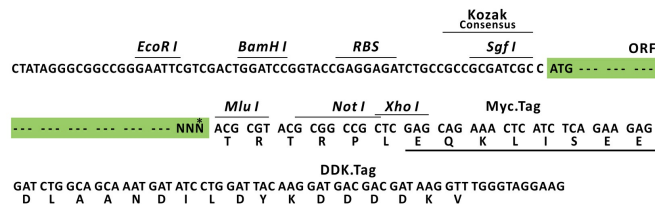
Product datasheet for MR226885L3

Epo (NM_007942) Mouse Tagged Lenti ORF Clone

Product data:

Product Type:	Expression Plasmids
Product Name:	Epo (NM_007942) Mouse Tagged Lenti ORF Clone
Tag:	Myc-DDK
Symbol:	Epo
Mammalian Cell Selection:	Puromycin
Vector:	pLenti-C-Myc-DDK-P2A-Puro (PS100092)
E. coli Selection:	Chloramphenicol (34 ug/mL)
ORF Nucleotide Sequence:	The ORF insert of this clone is exactly the same as(MR226885).
Restriction Sites:	Sgfl-MluI
Cloning Scheme:	

Cloning sites used for ORF Shuttling:

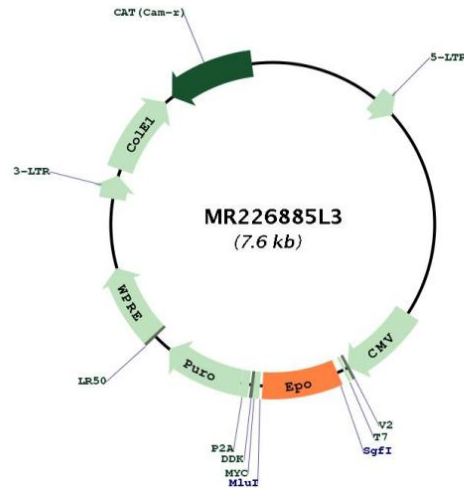


* The last codon before the Stop codon of the ORF.



[View online »](#)

Plasmid Map:



ACCN: NM_007942

ORF Size: 579 bp

OTI Disclaimer: Due to the inherent nature of this plasmid, standard methods to replicate additional amounts of DNA in *E. coli* are highly likely to result in mutations and/or rearrangements. Therefore, OriGene does not guarantee the capability to replicate this plasmid DNA. Additional amounts of DNA can be purchased from OriGene with batch-specific, full-sequence verification at a reduced cost. Please contact our customer care team at custsupport@origene.com or by calling 301.340.3188 option 3 for pricing and delivery.

The molecular sequence of this clone aligns with the gene accession number as a point of reference only. However, individual transcript sequences of the same gene can differ through naturally occurring variations (e.g. polymorphisms), each with its own valid existence. This clone is substantially in agreement with the reference, but a complete review of all prevailing variants is recommended prior to use. [More info](#)

OTI Annotation: This clone was engineered to express the complete ORF with an expression tag. Expression varies depending on the nature of the gene.

Components: The ORF clone is ion-exchange column purified and shipped in a 2D barcoded Matrix tube containing 10ug of transfection-ready, dried plasmid DNA (reconstitute with 100 ul of water).

Reconstitution Method:

1. Centrifuge at 5,000xg for 5min.
2. Carefully open the tube and add 100ul of sterile water to dissolve the DNA.
3. Close the tube and incubate for 10 minutes at room temperature.
4. Briefly vortex the tube and then do a quick spin (less than 5000xg) to concentrate the liquid at the bottom.
5. Store the suspended plasmid at -20°C. The DNA is stable for at least one year from date of shipping when stored at -20°C.

RefSeq: [NM_007942.2](#), [NP_031968.1](#)

RefSeq Size: 715 bp

RefSeq ORF: 579 bp

Locus ID: 13856

UniProt ID: [P07321](#)

Cytogenetics: 5 76.5 cM

Gene Summary: This gene encodes the glycoprotein hormone erythropoietin that regulates the production of red blood cells and biosynthesis of hemoglobin. The predominant expression of this gene shifts from the liver during fetal development to kidney in adults. A complete lack of the encoded protein causes embryonic lethal anemia in mice. The conditional inactivation of this gene in adult mice results in a chronic, normocytic and normochromic anemia. Transgenic mice expressing the human ortholog of this gene exhibit polycythemia. Alternative splicing results in multiple transcript variants encoding different isoforms. [provided by RefSeq, Aug 2015]