

## Product datasheet for MR226882L3

### Mepe (NM\_053172) Mouse Tagged Lenti ORF Clone

#### Product data:

Product Type:	Expression Plasmids
Product Name:	Mepe (NM_053172) Mouse Tagged Lenti ORF Clone
Tag:	Myc-DDK
Symbol:	Mepe
Synonyms:	Of45
Mammalian Cell Selection:	Puromycin
Vector:	pLenti-C-Myc-DDK-P2A-Puro (PS100092)
E. coli Selection:	Chloramphenicol (34 ug/mL)
ORF Nucleotide Sequence:	The ORF insert of this clone is exactly the same as(MR226882).
Restriction Sites:	SgfI-MluI
Cloning Scheme:	

Cloning sites used for ORF Shuttling:



\* The last codon before the Stop codon of the ORF.

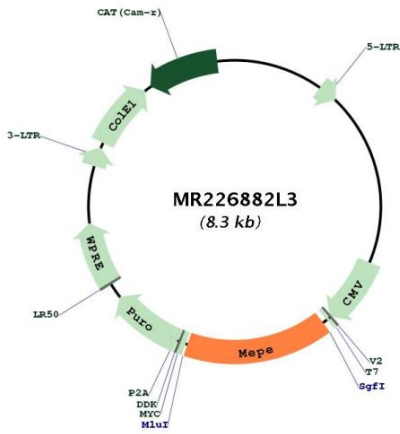
ACCN:	NM_053172
ORF Size:	1302 bp



[View online »](#)

<b>OTI Disclaimer:</b>	The molecular sequence of this clone aligns with the gene accession number as a point of reference only. However, individual transcript sequences of the same gene can differ through naturally occurring variations (e.g. polymorphisms), each with its own valid existence. This clone is substantially in agreement with the reference, but a complete review of all prevailing variants is recommended prior to use. <a href="#">More info</a>
<b>OTI Annotation:</b>	This clone was engineered to express the complete ORF with an expression tag. Expression varies depending on the nature of the gene.
<b>Components:</b>	The ORF clone is ion-exchange column purified and shipped in a 2D barcoded Matrix tube containing 10ug of transfection-ready, dried plasmid DNA (reconstitute with 100 ul of water).
<b>Reconstitution Method:</b>	<ol style="list-style-type: none"><li>1. Centrifuge at 5,000xg for 5min.</li><li>2. Carefully open the tube and add 100ul of sterile water to dissolve the DNA.</li><li>3. Close the tube and incubate for 10 minutes at room temperature.</li><li>4. Briefly vortex the tube and then do a quick spin (less than 5000xg) to concentrate the liquid at the bottom.</li><li>5. Store the suspended plasmid at -20°C. The DNA is stable for at least one year from date of shipping when stored at -20°C.</li></ol>
<b>RefSeq:</b>	<a href="#">NM_053172.2</a> , <a href="#">NP_444402.2</a>
<b>RefSeq Size:</b>	1682 bp
<b>RefSeq ORF:</b>	1326 bp
<b>Locus ID:</b>	94111
<b>UniProt ID:</b>	<a href="#">Q8K4L6</a>
<b>Cytogenetics:</b>	5 E5
<b>Gene Summary:</b>	Regulates renal phosphate and uric acid excretion (PubMed:26051469). Regulates bone mineralization by osteoblasts and cartilage mineralization by chondrocytes (PubMed:11414762, PubMed:12421822, PubMed:15843468, PubMed:22766095). Regulates the mineralization of the extracellular matrix of the craniofacial complex, such as teeth, bone and cartilage (PubMed:26927967). Increases dental pulp stem cell proliferation (By similarity). [UniProtKB/Swiss-Prot Function]

Product images:



Circular map for MR226882L3