

Product datasheet for **MR226847**

Vav1 (NM_001163815) Mouse Tagged ORF Clone

Product data:

Product Type:	Expression Plasmids
Product Name:	Vav1 (NM_001163815) Mouse Tagged ORF Clone
Tag:	Myc-DDK
Symbol:	Vav1
Synonyms:	Vav; vav-T
Mammalian Cell Selection:	Neomycin
Vector:	pCMV6-Entry (PS100001)
E. coli Selection:	Kanamycin (25 ug/mL)



[View online »](#)

ORF Nucleotide Sequence:

>MR226847 representing NM_001163815
 Red=Cloning site Blue=ORF Green=Tags(s)

TTTTGTAATACGACTCACTATAGGGCGGCCGGGAATTCGTCGACTGGATCCGGTACCGAGGAGATCTGCC
 GCC**CGGATCGCC**

ATGGAGCTCTGGCGACAGTGCACCCACTGGCTGATCCAGTGTGGGTGCTGCCTCCAGCCACCGTGTGA
 CCTGGGAGGGGGCCAGGCCATTAATCTTCGCGAGGTTAACTTGGGCCCCAGATGTCCAGTTCCTTTG
 TCTTAAGAACATTGAACTTCTGTCTACTTGTGTGAGAAGTTCGGCCTCAAGCGCAGTGAACCTTT
 GAGGCTTTTGACCTCTTCGATGTGCAGGACTTTGGAAAGGTCATCTACACCCTGTCTGCTGTGCATGGA
 CACCCATTGCCAGAACAAGGAATCATGCCCTTCCCAACAGAGGACAGCGCTCTGAACGACGAAGATAT
 TTACAGTGGCCTTTCAGACCAGATTGATGACACCCGAGAGGAAGACGAGGACCTTTATGACTGCGTGAA
 AATGAGGAGGCAGAGGGGACGAGATCTACGAGGACCTAATGCGCTTGGAGTCGGTGCCTACGCCACCCA
 AGATGACAGAGTATGATAAGCGCTGCTGCTGCCTGCGGGAGATCCAGCAGACGGAGGAGAAGTATACAGA
 CACACTGGGCTCCATCCAGCAGCACTTCATGAAGCCTCTGCAGCGATTCTTAAGCCTCAAGACATGGAG
 ACCATCTTTGTCAACATTGAGGAGCTGTCTCTGTGCATACCCACTTCTTAAGGAACTGAAGGATGCC
 TGCTGGCCCGGAGCAACAACACTGTATCAGGTCTTCATCAAGTACAAGGAGAGGTTTCTGGTTTATGG
 CCGTTATTGCAGTCAGGTGGAGTCAGCCAGCAAGCACTTGGATCAAGTGGCCACAGCACGGGAGGATGTG
 CAGATGAAGCTGGAGGAATGTTCTCAAAGAGCTAACTAAGGCGATTACCCCTACGGGATCTGCTGATGG
 TACCTATGCAGCGGGTGTGAAGTACCCTCTTCTCCAGGAGCTAGTAAACACACACAGGATGCTAC
 AGAGAAGGAGAACCTGCGGTTGGCCCTGGACGCCATGAGGGACCTGGCACAGTGGTGAACGAGGTCAAG
 AGGGACAATGAAACCTACGGCAGATCACAACCTTTCAGCTGTCCATTGAGAACCTGGACCAGTCTCTGG
 CTAACATGGCCCGGCCAAGATTGACGGTGAAGTCAAGATTACCTCAGTGGAGCGTCGCTCAAAGACAG
 CAGGTATGCCTTCTGCTGGACAAAGCACTGCTCATCTGTAAACGCCGCGGGGACTCTTACGACCTCAAA
 GCCTCGGTGAACCTGCACAGCTTCCAAGTTCGAGATGACTCCTCCGGGGAGCGAGACAACAAGAAGTGG
 GCCATATGTTCTCTGATTGAGGATCAAGGCGCCAGGGCTATGAGCTGTTCTTCAAGACTCGGGAGCT
 GAAGAAGAAGTGGATGGAACAGTTCGAAATGGCCATCTCCAACATTTACCCAGAGAATGCTACAGCCAAT
 GGGCATGATTTTCAGATGTTCTCCTTTGAGGAGACCCTTCTGCAAGGCCTGCCAGATGTTACTCAGAG
 GCACATTTCTACCAGGGATATCGTGTACAGGTGCCGGGCACCTGCACACAAGGAGTGTCTGGGAGAGT
 GCCTCCCTGTGGTCGCCATGGGCAAGATTTGCGAGGAACCATGAAGAAGGACAAGCTCCATCGAAGGGCC
 CAGGACAAGAAAAGGAATGAATGGGTCTGCCTAAGATGGAAGTGTTCAGGAATACTATGGGATCCCTC
 CTCCACCTGGAGCCTTTGGGCCATTTTTACGGCTCAACCTGGGGACATTGTGGAGCTCACTAAGGCAGA
 GGCTGAGCACAACCTGGTGGGAGGGAAGGAATACTGCTACAAATGAAGTCGGCTGGTTTCCCTGTAACAGA
 GTGCATCCCTATGTCCACGGCCCTCCTCAGGACCTGTCTGTGCATCTCTGGTATGCGGGCCCTATGGAAC
 GAGCAGGCGCTGAGGGCATCCTCACCAACCGTTCTGATGGGACCTATCTGGTGGCGCAGAGGGTGAAGA
 TACAGCGGAGTTCGCCATCAGCATTAAAGTATAACGTGGAGGTCAAGCATATTAATAATCATGACGTCAGAG
 GGGTTGTACCGGATCACAGAGAAGAAGGCTTTCCGGGGCCTTCTGGAACCTGGTAGAGTTTATCAGCAGA
 ATTCCTCAAAGATTGCTTCAAGTCGTTGGACACCACCTTGCAGTTTCTTATAAGGAACCTGAGAGGAG
 AGCCATCAGCAAGCCACCAGCTGGAAGCACCAAGTATTTTGGCACTGCCAAAGCCCGCTACGACTTCTGT
 GCGCGGACAGGTCGGAACGTCCCTTAAGGAGGGTGTATCATCAAGATCCTCAATAAGAAGGGACAGC
 AAGGCTGGTGGCTGGGAGATCTACGGCCGGATCGGCTGGTTCCCTTAACTATGTGGAGGAAGACTA
 TTCCGAATATTGC

ACGCGTACGCGGGCGCTCGAGCAGAACTCATCTCAGAAGAGGATCTGGCAGCAATGATATCCTGGATT
 ACAAGGATGACGACGATAAGGTTTAA

Protein Sequence: >MR226847 representing NM_001163815
Red=Cloning site Green=Tags(s)

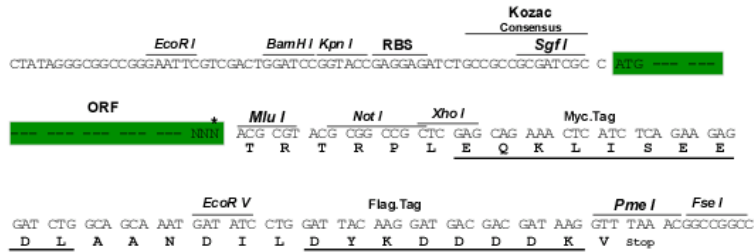
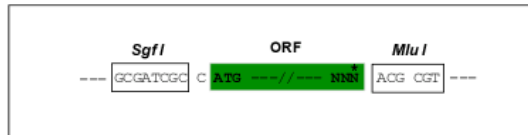
MELWRQCTHWLIQCRVLPPSHRVTWEGAQAINLREVNLRPQMSQFLCLKNIRTFLLSTCCEKFGFKRSELF
EAFDLFDVQDFGKVIYTLALSWSWPIAQNKGIMPFPTEDSALNDEDIYSGLSAQIDDAEDEDLYDCVE
NEEAEGDEIYEDLMRLESVPTPPKMTEYDKRCCCLREIQQTEEKYDTLGSIQHFMKPLQRFLKLPQDME
TIFVNIIEELFSVHTHFLKELKDLAGPGATTLYQVFIKYKERFLVYGRYCSQVESASKHLDQVATAREDV
QMKLEECQRANNGRFTLRDLLMVPQVRVLYHLLLQELVKHTQDATEKENLRALDAMRDLAQCVNEVK
RDNETLRQITNFQLSIENLDQSLANYGRPKIDGELKITSVERRSKTDRYAFLLDKALLICKRRGDSYDLK
ASVNLHSFQVRDDSSGERDNKKWSHMFLIEDQGAQGYELFFKTRELKKKWMEQFEMAIISNIYPENATAN
GHDFQMFSEETTSCACQMLLRGTFYQGYRCYCRAPAHKECLGRVPPCGRHGQDFAGTMKKDKLHRRRA
QDKKRNELGLPKMEVFQEYYGIPPPGAFGPFLRLNPGDVELTKAEAEHNWWEGRNTATNEVGWFPENR
VHPYVHGPPQDL SVHLWYAGPMERAGAEGILTNRSDGTYLVRQVVKDTAEFAISIKYNVEVKHIKIMTSE
GLYRITEKKAFRGLLELVEFYQQNSLKDCFKSLDTTLQFPYKEPERRAISKPPAGSTKYFGTAKARYDFC
ARDRSEL SLKEGDIKILNKKGGQGWWRGEIYGRIGWFPSNYVEEDYSEYC

TRTRPLEQKLI SEEDLAANDILDYKDDDDKV

Restriction Sites: Sgfl-MluI

Cloning Scheme:

Cloning sites used for ORF Shuttling:



* The last codon before the Stop codon of the ORF

- ACCN:** NM_001163815
- ORF Size:** 2463 bp
- OTI Disclaimer:** The molecular sequence of this clone aligns with the gene accession number as a point of reference only. However, individual transcript sequences of the same gene can differ through naturally occurring variations (e.g. polymorphisms), each with its own valid existence. This clone is substantially in agreement with the reference, but a complete review of all prevailing variants is recommended prior to use. [More info](#)
- OTI Annotation:** This clone was engineered to express the complete ORF with an expression tag. Expression varies depending on the nature of the gene.
- Components:** The ORF clone is ion-exchange column purified and shipped in a 2D barcoded Matrix tube containing 10ug of transfection-ready, dried plasmid DNA (reconstitute with 100 ul of water).

Reconstitution Method:

1. Centrifuge at 5,000xg for 5min.
2. Carefully open the tube and add 100ul of sterile water to dissolve the DNA.
3. Close the tube and incubate for 10 minutes at room temperature.
4. Briefly vortex the tube and then do a quick spin (less than 5000xg) to concentrate the liquid at the bottom.
5. Store the suspended plasmid at -20°C. The DNA is stable for at least one year from date of shipping when stored at -20°C.

RefSeq: [NM_001163815.1](#), [NP_001157287.1](#)

RefSeq Size: 4096 bp

RefSeq ORF: 2466 bp

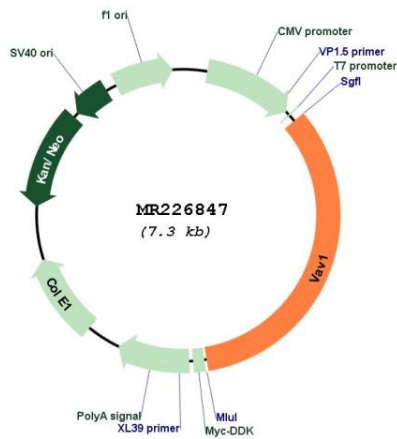
Locus ID: 22324

Cytogenetics: 17 29.76 cM

MW: 96 kDa

Gene Summary: Couples tyrosine kinase signals with the activation of the Rho/Rac GTPases, thus leading to cell differentiation and/or proliferation.[UniProtKB/Swiss-Prot Function]

Product images:



Circular map for MR226847