

Product datasheet for **MR226842**

Tbx3 (NM_011535) Mouse Tagged ORF Clone

Product data:

Product Type:	Expression Plasmids
Product Name:	Tbx3 (NM_011535) Mouse Tagged ORF Clone
Tag:	Myc-DDK
Symbol:	Tbx3
Synonyms:	D5Ertd189e
Mammalian Cell Selection:	Neomycin
Vector:	pCMV6-Entry (PS100001)
E. coli Selection:	Kanamycin (25 ug/mL)



[View online »](#)

ORF Nucleotide Sequence:

>MR226842 representing NM_011535
 Red=Cloning site Blue=ORF Green=Tags(s)

TTTTGTAATACGACTCACTATAGGGCGGCCGGAATTCGTCGACTGGATCCGGTACCGAGGAGATCTGCC
 GCC**CGGATCGCC**

ATGAGCCTCTCCATGAGAGATCCGGTTATCCCTGGGACAAGCATGGCCTATCATCCCTTCTACCTCACC
 GGGCGCCGGACTTCGCCATGAGCGCGTACTGGGCCACCAGCCGCTTTCTTCCCGCGCTAACGCTGCC
 TCCAACGGCGCCGCGGCTCTCGCTCCCGGAGCTCTGGCCAAGCCATCATGGATCAGTTAGTGGGG
 GCTGCTGAGACCGGCATCCCTTCTCATCCCTGGGACCCAGGCACATCTGAGGCCTCTGAAGACCATGG
 AACCCGAAGAAGACGTAGAAGATGACCCTAAGGTGCACCTGGAGGCCAAGGAACTTTGGGACCAGTTTCA
 CAAGCGGGGTACAGAGATGGTCATCACGAAGTCAGGAAGGCGAATGTTCCCTCCGTTTAAAGTGAGGTGC
 TCTGGACTGGATAAAAAGCCAAGTATATTTTATTGATGGACATTATAGCTGCTGACGACTGTGATATA
 AATTTACAACCTCTCGGTGGATGGTGGCCGTAAGGCAGACCCCGAAATGCCAAAGAGAATGTATATACA
 CCCGGACAGCCCGCTACGGGGGAGCAATGGATGTCAAAGTCGTCACCTTCCACAACTGAACTCACC
 AACACATATCGGATAAACACGGATTTACTTTGGCCTTCCAAGCGATCAGCAACGTGGCAGGGGAATT
 ATAGTTTTGGGACCCAGACTATACTAACTCTATGCATAAGTACCAGCCGCGTTCCACATCGTCAGAGC
 CAACGATATCCTGAACTGCCTTACAGTACTTTTGAACCTACCTGTTCCCGAAACAGAATTCATCGCC
 GTTACTGCCTATCAGAATGACAAGATAACTCAGTTAAAAATAGACAACAATCCCTTTGCAAAGGGTTTTT
 GAGACTGGCAATGGCAGGAGAGAAAAAGAAAGCAGCTCACACTGCAGTCCATGAGAGTGTGGAGGA
 GAGGATAAGAAGGAGACTTCGGATGAGTCTCCAGCGAGCAGGCAGCTTCAACTGCTTTGCCAGGCA
 TCCTCTCTGCTGTCTCCATCGTGGGACATCCAACCTCAAAGATCTGTGTCCAGCGAAGCCGAGAGTG
 ACGCCGAGGCTGAGAGCAAGGAGGAGCACGGCCCTGAGGCCTGCGACGCGGCCAAGATTTCCACCAC
 GGCCGAGGAGCCAGGCCGCGACAAGGGCAGCCAGCAACCAGGGCGCAGCTGTTCCCGCGGAGCCAGC
 CGGGCCCGCGACACCGCGCTCTGGACAAGGCATCGCCAGACTCGCGCCATAGCCCGGCCACCATCTCGT
 CCAGCACGCGAGTTCGGGAGCTGATGAGCGCAGGAGTCCCGGGCGGAGGGTCCAGTCCGACCAAGGT
 GGATGAGGCGCGCGATTCTGCCAAGGACGCTTTCGCTCCACTGTGGTGCAGACAGACGCCACCGCG
 CACCTAGCGCAGGGCCCTCCCGGCTTGGGTTTCGCCCCAGGCCTTCCGGGCCAGCAGTTCTTCAACG
 GGCACCCGCTCTCCTGCACCCGGGCCAGTTCGCCATGGCGGCGCCTTCTCTAGCATGGCTGCAGGCAT
 GGGGCCCTGCTGGCCACAGTATCCGGAGCATCCACCGGCTCTCAGGCCTAGAATCCACAGCCATGGCC
 TCGGCTGCCGAGCGCAGGGACTGTCTGGGGCTCGGCTGCCACCCTGCCCTTCCACCTCAACAACAGC
 TTCTGGCCTCCCAGGGCTTGGCTATGTCGCCTTTCGGGAGCCTGTTTCTTACCCCTACACATACATGGC
 TGCAGCAGCTGCAGCCTCACCGCGGCCCTCCAGCTCCGTGCACCGCCACCCGTTCTCAATTTGAAC
 AGCATGGCCCCAGGCTGCGTTACAGCCCTATTCCATCCCCGTCCCAGTGCCGGATAGCAGCAGTTTGC
 TGGCCACAGCTTACCATCAATGGCTTCCGCCGCGGGGCCCTAGACGGCAAAGCGGCCCGCTGGCAGC
 CAGCCCAGCCTCGGTGGCTGTGGACTCGGGTCCGAACTGAACAGCCGCTCGTCCACGCTGTCTCTGGC
 TCAGTGTCTTGTACCCAACTCTGCTCCGAGAAGGAGGCGGCTACCAGCGAAGTGCAGAGTATCCAGC
 GGCTGGTCAGTGGCTTGAAGCCAAGCCAGACAGGTCTTGCAGCGGTCCCCT

ACGCGTACGCGCGGCTCGAGCAGAACTCATCTCAGAAGAGGATCTGGCAGCAAATGATATCCTGGATT
 ACAAGGATGACGACGATAAGGTTTAA

Protein Sequence: >MR226842 representing NM_011535
 Red=Cloning site Green=Tags(s)

```
MSLSMRDPVIPGTSMA YHPFLPHRAPDFAMSAVLGHQPPFFPAL TLPNGAAALSLPGALAKPIMDQLVG
AAETGIPFSSSLGPQHLRPLKTMEEPEEDVEDDPKVHLEAKELWDQFHKRGTEMVITKSGRRMFPPFKVRC
SGLDKKAKYILLMDIIAADDRCRYKFHNSRWMVAGKADPEMPKRM YIHPDSPATGEQWMSKVVTFHKLKLT
NNISDKHGFTLAFPSDHATWQGNYSFGTQTILNSMHKYQPRFHI VRANDILKLPYSTFRTYLFPETEFIA
VTAYQNDKITQLKIDNPF AKGFRDTGNRREKRKQLTLQSMRVFEERHKKETSDESSSEQAAFNCFAQA
SSPAVSVIVGTSNLKDLCPSEAESDAEAEESKEEHGPEACDAAKISTTTAEEPGRDKGSPATRAQLFPAEPS
RARDTARLDKASPDRHSPATISSSTRVPGADERRSPGREGPVATKVDEARAIPAKDAFAPLSVQTDATA
HLAQGPLPGLGFAPLAGQQFFNGHPLFLHPGQFAMGGAFSSMAAGMPLLATVSGASTGVSGLESTAMA
SAAAAQGLSGASAATLPFHLQQHVLASQGLAMSPFGSLFPYPYTYMAAAAAASTAAASSSVHRHPFLNLN
SMRPRLRYSYPYIPVVPDSSLLATALPSMASAAGPLDGKAAALAASPASVAVDSGSELNSRSSTLSSG
SVSLSPKLCSEKEAATSELQSIQRLVSGLEAKPDRSCSGSP
```

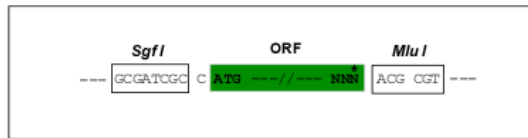
TRTRPLEQKLI SEEDLAANDILDYKDDDDKV

Chromatograms: https://cdn.origene.com/chromatograms/ja2772_h01.zip

Restriction Sites: Sgfl-MluI

Cloning Scheme:

Cloning sites used for ORF Shuttling:



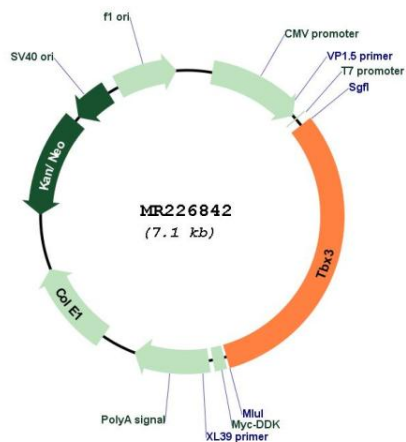
* The last codon before the Stop codon of the ORF

ACCN: NM_011535

ORF Size: 2226 bp

OTI Disclaimer:	<p>Due to the inherent nature of this plasmid, standard methods to replicate additional amounts of DNA in E. coli are highly likely to result in mutations and/or rearrangements. Therefore, OriGene does not guarantee the capability to replicate this plasmid DNA. Additional amounts of DNA can be purchased from OriGene with batch-specific, full-sequence verification at a reduced cost. Please contact our customer care team at custsupport@origene.com or by calling 301.340.3188 option 3 for pricing and delivery.</p> <p>The molecular sequence of this clone aligns with the gene accession number as a point of reference only. However, individual transcript sequences of the same gene can differ through naturally occurring variations (e.g. polymorphisms), each with its own valid existence. This clone is substantially in agreement with the reference, but a complete review of all prevailing variants is recommended prior to use. More info</p>
OTI Annotation:	This clone was engineered to express the complete ORF with an expression tag. Expression varies depending on the nature of the gene.
Components:	The ORF clone is ion-exchange column purified and shipped in a 2D barcoded Matrix tube containing 10ug of transfection-ready, dried plasmid DNA (reconstitute with 100 ul of water).
Reconstitution Method:	<ol style="list-style-type: none"> 1. Centrifuge at 5,000xg for 5min. 2. Carefully open the tube and add 100ul of sterile water to dissolve the DNA. 3. Close the tube and incubate for 10 minutes at room temperature. 4. Briefly vortex the tube and then do a quick spin (less than 5000xg) to concentrate the liquid at the bottom. 5. Store the suspended plasmid at -20°C. The DNA is stable for at least one year from date of shipping when stored at -20°C.
RefSeq:	NM_011535.3
RefSeq Size:	4647 bp
RefSeq ORF:	2226 bp
Locus ID:	21386
UniProt ID:	P70324
Cytogenetics:	5 60.34 cM
MW:	79.2 kDa
Gene Summary:	Transcriptional repressor involved in developmental processes. Probably plays a role in limb pattern formation. Acts as a negative regulator of PML function in cellular senescence (By similarity).[UniProtKB/Swiss-Prot Function]

Product images:



Circular map for MR226842