

Product datasheet for **MR226837**

Tbx3 (NM_198052) Mouse Tagged ORF Clone

Product data:

Product Type:	Expression Plasmids
Product Name:	Tbx3 (NM_198052) Mouse Tagged ORF Clone
Tag:	Myc-DDK
Symbol:	Tbx3
Synonyms:	D5Ertd189e
Mammalian Cell Selection:	Neomycin
Vector:	pCMV6-Entry (PS100001)
E. coli Selection:	Kanamycin (25 ug/mL)



[View online »](#)

ORF Nucleotide Sequence:

>MR226837 representing NM_198052
 Red=Cloning site Blue=ORF Green=Tags(s)

TTTTGTAATACGACTCACTATAGGGCGGCCGGGAATTCGTCGACTGGATCCGGTACCGAGGAGATCTGCC
 GCC**CGGATCGCC**

ATGAGCCTCTCCATGAGAGATCCGGTTATCCCTGGGACAAGCATGGCCTATCATCCCTTCTACCTCACC
 GGGCGCCGGACTTCGCCATGAGCGCGGTACTGGGCCACCAGCCGCTTTCTTCCCCGCGCTAACCGTGCC
 TCCAACGGCGCCGCGCGCTCTCGCTCCCGGAGCTCTGGCCAAGCCATCATGGATCAGTTAGTGGGG
 GCTGCTGAGACCGGCATCCCTTTCTCATCCCTGGGACCCAGGCACATCTGAGGCCTCTGAAGACCATGG
 AACCCGAAGAAGACGTAGAAGATGACCCTAAGGTGCACCTGGAGGCCAAGGAACTTTGGGACCAGTTTCA
 CAAGCGGGGTACAGAGATGGTCATCACGAAGTCAGGAAGGCGAATGTTCCCTCCGTTTAAAGTGAGGTGC
 TCTGGACTGGATAAAAAGCCAAGTATATTTTATTGATGGACATTATAGCTGCTGACGACTGTGCATATA
 AATTTCACAACTCTCGGTGGATGGTGGCCGTAAGGCAGACCCCGAAATGCCAAAGAGAATGTATATACA
 CCCGGACAGCCCGCTACGGGGGAGCAATGGATGTCAAAGTCGTCACCTTCCACAACTGAAACTCACC
 AACACATATCGGATAAACACGGATTTACTATACTAAACTCTATGCATAAGTACCAGCCGCGTTCCACA
 TCGTCAGAGCCAACGATATCCTGAAACTGCCTTACAGTACTTTTCGAACCTACCTGTTCCCGGAAACAGA
 ATTCATCGCCGTTACTGCCTATCAGAATGACAAGATAACTCAGTTAAAAATAGACAACAATCCCTTTGCA
 AAGGGTTTTCGAGACTGGCAATGGCAGGAGAGAAAAAGAAAGCAGCTCACACTGCAGTCCATGAGAG
 TGTTTGAGGAGAGGCATAAGAAGGAGACTTCGGATGAGTCTCCAGCGAGCAGGCAGCCTTCAACTGCTT
 TGCCAGGCATCCTCTCTGCTGTCTCCATCGTGGGACATCCAACTCAAAGATCTGTGTCCCAGCGAA
 GCCGAGAGTGACCCGAGGCTGAGAGCAAGGAGGAGCACGGCCCTGAGGCCTGCGACGCGCCAAGATTT
 CCACCATAACGGCCGAGGAGCCAGGCCGCGACAAGGGCAGCCAGCAACCAGGGCGCAGTGTTCGCCGC
 GGAGCCCAGCCGGGCCCGACACCGCGCTCTGGACAAGGCATCGCCAGACTCGCGCCATAGCCCGGCC
 ACCATCTCGTCCAGCACGCGAGTTCGGGAGCTGATGAGCGCAGGAGTCCCGGGCGGAGGGTCCAGTCG
 CCACCAAGGTGGATGAGGCGCGCGATTCTGCAAGGACGCCTTCGCTCCACTGTCGTTGCAGACAGA
 CGCCACCGCGCACCTAGCGCAGGGGCCCTCCCGGGCTTGGGTTTCGCCCAGGCCTTGGGGCCAGCAG
 TTCTTCAACGGGCACCCGCTCTTCTGCACCCGGGCCAGTTCGCCATGGGCGGCGCTTCTCTAGCATGG
 CTGCAGGCATGGGGCCCTGCTGGCCACAGTATCCGGAGCATCCACCGCGCTCAGGCCTAGAATCCAC
 AGCCATGGCTCGGCTGCCGAGCGCAGGGACTGTCTGGGCGTGGCTGCCACCCTGCCCTTCCACCTC
 CAACAACAGTTCTGGCCTCCCAGGGCTTGGCTATGTGCGCTTTCGGGAGCCTGTTTCTTACCCTACA
 CATAATGGCTGCAGCAGCTGCAGCCTCCACCGGGCCGCTCCAGCTCCGTGCACCGCCACCCGTTCTT
 CAATTTGAACAGCATGCGCCCCAGGCTGCGTTACAGCCCTATTCCATCCCCGTCCCAGTGCCGGATAGC
 AGCAGTTTGTGGCCACAGCTTTACCATCAATGGCTTCCGCCGCGGGGCCCTAGACGGCAAAGCGGCCG
 CCCTGGCAGCCAGCCAGCCTCGGTGGCTGTGGACTCGGGGTGGAACTGAACAGCCGCTCGTCCACGCT
 GTCCTCTGGCTCAGTGTCTTGTACCCAACTCTGCTCCGAGAAGGAGGCGGCTACCAGCGAACTGCAG
 AGTATCCAGCGGCTGGTCACTGGCTTGAAGCCAAGCCAGACAGGTCTTGCAGCGGGTCCCT

ACGCGTACGCGGCCGCTCGAGCAGAACTCATCTCAGAAGAGGATCTGGCAGCAAATGATATCTGGATT
 ACAAGGATGACGACGATAAGGTTTAA

Protein Sequence: >MR226837 representing NM_198052
 Red=Cloning site Green=Tags(s)

```
MSLSMRDPVIPGTSMAYHPFLPHRAPDFAMSAVLGHQPPFFPALTLPPNGAAALSLPGALAKPIMDQLVG
AAETGIPFSSSLGPQHLRPLKTMEEEDVEDDPKVHLEAKELWDQFHKRGTEMVITKSGRRMFPPFKVRC
SGLDKKAKYILLMDIIAADDCRYKFHNSRWMVAGKADPEMPKRMYPHPSPATGEQWMSKVVTFHKLKLT
NNISDKHGFTILNSMHKYQPRFHIVRANDILKLPYSTFRTYLFPETEFIAVTAYQNDKITQLKIDNNPFA
KGFRTDNGRREKRKQLTLQSMRVFEERHKKETSDESSSEQAAFNCFAQASSPAVSIVGTSNLKDLCPSE
AESDAEAEESKEEHGPEACDAAKISTTTAEPEGRDKGSPATRAQLFPAEPSRARDTARLDKASPDSRHSPA
TISSTRVPGADERRSPGREGPVATKVDEARAIPAKDAFAPLSVQTDATAHLAQGPLPGLGFAPGLAGQQ
FFNGHPLFLHPGQFAMGGAFSSMAAGMPLLATVSGASTVSGLESTAMASAAAAAQLSGASAATLPFHL
QQHVLASQGLAMSPFGSLFPYPYTYMAAAAAASTAAASSVHRHPFLNLSMRPRLRYPSPYIPVVPDSD
SSLLATALPSMASAAGPLDGKAAALAASPASVAVDSGSELNSRSSTLSSGSVSLSPKLCSEKEAATSELQ
SIQRLVSGLEAKPDRSCSGSP
```

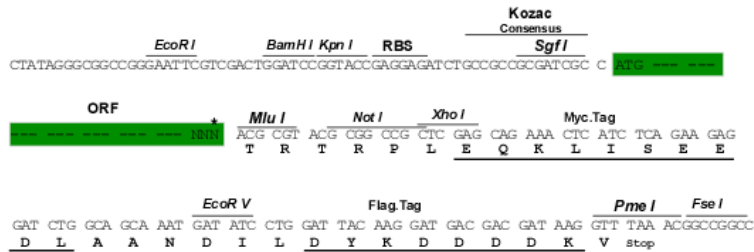
TRTRPLEQKLISEEDLAANDILDYKDDDDKV

Chromatograms: https://cdn.origene.com/chromatograms/mm9033_c10.zip

Restriction Sites: Sgfl-MluI

Cloning Scheme:

Cloning sites used for ORF Shuttling:



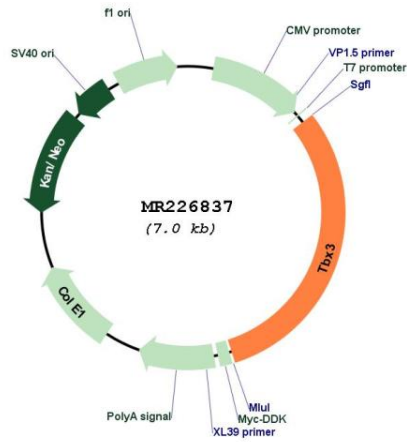
* The last codon before the Stop codon of the ORF

ACCN: NM_198052

ORF Size: 2163 bp

OTI Disclaimer:	<p>Due to the inherent nature of this plasmid, standard methods to replicate additional amounts of DNA in E. coli are highly likely to result in mutations and/or rearrangements. Therefore, OriGene does not guarantee the capability to replicate this plasmid DNA. Additional amounts of DNA can be purchased from OriGene with batch-specific, full-sequence verification at a reduced cost. Please contact our customer care team at custsupport@origene.com or by calling 301.340.3188 option 3 for pricing and delivery.</p> <p>The molecular sequence of this clone aligns with the gene accession number as a point of reference only. However, individual transcript sequences of the same gene can differ through naturally occurring variations (e.g. polymorphisms), each with its own valid existence. This clone is substantially in agreement with the reference, but a complete review of all prevailing variants is recommended prior to use. More info</p>
OTI Annotation:	This clone was engineered to express the complete ORF with an expression tag. Expression varies depending on the nature of the gene.
Components:	The ORF clone is ion-exchange column purified and shipped in a 2D barcoded Matrix tube containing 10ug of transfection-ready, dried plasmid DNA (reconstitute with 100 ul of water).
Reconstitution Method:	<ol style="list-style-type: none"> 1. Centrifuge at 5,000xg for 5min. 2. Carefully open the tube and add 100ul of sterile water to dissolve the DNA. 3. Close the tube and incubate for 10 minutes at room temperature. 4. Briefly vortex the tube and then do a quick spin (less than 5000xg) to concentrate the liquid at the bottom. 5. Store the suspended plasmid at -20°C. The DNA is stable for at least one year from date of shipping when stored at -20°C.
RefSeq:	NM_198052.2
RefSeq Size:	5022 bp
RefSeq ORF:	2166 bp
Locus ID:	21386
Cytogenetics:	5 60.34 cM
MW:	77.4 kDa
Gene Summary:	Transcriptional repressor involved in developmental processes. Probably plays a role in limb pattern formation. Acts as a negative regulator of PML function in cellular senescence (By similarity).[UniProtKB/Swiss-Prot Function]

Product images:



Circular map for MR226837