

Product datasheet for **MR226824**

Prdm1 (NM_007548) Mouse Tagged ORF Clone

Product data:

Product Type:	Expression Plasmids
Product Name:	Prdm1 (NM_007548) Mouse Tagged ORF Clone
Tag:	Myc-DDK
Symbol:	Prdm1
Synonyms:	b2b1765Clo; Blimp-1; Blimp1; PRDI-BF1; ZNFPR1A1
Mammalian Cell Selection:	Neomycin
Vector:	pCMV6-Entry (PS100001)
E. coli Selection:	Kanamycin (25 ug/mL)



[View online »](#)

ORF Nucleotide
Sequence:

>MR226824 representing NM_007548
Red=Cloning site Blue=ORF Green=Tags(s)

TTTTGTAATACGACTCACTATAGGGCGGCCGGGAATTCGTCGACTGGATCCGGTACCGAGGAGATCTGCC
GCC**CGCATCGCC**

ATGTTGGATCTTCTCTTGAAAAACGTGTGGGTACGACCTGGCTGCCCCCAAGTCTAGCTCCGGCTCCG
TGAAGTTTCAAGGACTGGCAGAGACTGGGATCATGAAAAATGGACATGGAGGACGCTGATATGACTTTGTG
GACAGAGGCCGAGTTTGAAGAGAAGTGTACATACATAGTGAACGACCACCCTGGGATTCGGCGCTGAC
GGGGTACTTCTGTTCAAGCCGAGGCATCCTTACCAAGGAACCTGCTTTTCAAGTATGCTGCCAACAAACA
GCAAAGAGGTTATTGGCGTGGTAAGTAAGGAGTACATACCGAAGGGAACACGCTTTGGACCCCTCATCGG
TGAAGTCTACACTAATGACACAGTTCCTCAAGAATGCCAACAGGAAGTATTTTTGGCGGATCTATTCCAGA
GAGGAGTCCACCACTTATTGATGGCTTAAATGAGGAGAAAAGCAACTGGATGCGCTACGTAATCCAG
CTCACTCTGCCCGGAGCAAAACCTGGCTGCCTGTGAGAACGGGATGAACATCTACTTCTACACTATTAA
GCCTATCCCTGCCAACCGAAGTCTTGTGTGGTATTGTCGGGACTTTGCGGAGAGGCTCCACTACCT
TATCCTGGAGAGCTCACAGTGATAAATCTCACACAAACGGAAAGCAACCCAAAGCAATACAGTAGTGAGA
AAAATGAACTCTACCCAAAGAGTGTCCCAAGAGAGAGTACAGCGTGAAAGAAATTTAAAACTGGACTC
CAATCCCTCCAAAAGGAAGGACATCTACCGTTCCAACATTTACCCCTTCACTTTAGAAAAGGACATGGAT
GGCTTTTCGGAAAAATGGGAGCCCGACATGCCCTTCTACCTCGGGTGGTTTATCCTATCCGGGCACCTC
TGCCAGAAGACTTTTTGAAAGCGTCCCTGGCCTATGGGATGGAGAGACCCACCTACATAACTCACAGTCC
CCTTCCGTCTTCCACAACCTCAAGTCCCCTGCGAGCAGCAGCCCGGAGCAGGCCTTAAGAGTCCAGC
CCCCACAGCAGCCCGGAAACACGGGTGACCCCTGGCGCCAGGCCTCCAGAACACCCGGGACTCCTACT
CCTACTGAATGTTTCTATGGTTCGAGGGCTGGGCTCCTACCTGGCTATGCACCTGCCCCCACT
CCACCAGCTTTTCACTTCTTACAATGCTCACTACCCCAAGTTCCTGTTGCCACCGTACGGCATTAGT
TCCAATGGCTTGAGCACCATGAACAACATCAATGGTATCAACAACCTTCAGCCTCTTCCCTAGGTTGTATC
CCGTCTACAGTAACCTCCTTAGTGGCAGCAGCCTGCCTCATCCCATGCTCAATCCAGCTTCCCTACCGAG
TTCCCTGCCTACCGATGGAGCCCGGAGGCTGCTTCCACCGGAGCACCCCAAGAGGTGCTTATCCAGCA
CCCCACAGTGCCTTCTCCCTTACCGGGCTGCAGCCAGCATGAAGGACGAGAGTAGTCCCCCAGCGGAT
CTCCAACGGCGGAACTGCAGCCACGTGAGAACACGTGGTACAACCCAAAGCTACCTCATCAGTATGGC
GGCCCCCAGCACTGACGGAGCCATGAATCTCATTAAAAACAACGAAACATGACTGGTTACAAGACTCTT
CCTTACCCTCTGAAGAAACAGAATGGCAAGATCAAGTATGAGTGAATGTCTGTGCAAGACGTTCCGGTC
AGCTCTCCAACCTGAAGGTCCACCTGAGAGTGCACAGTGGAGAACGGCCTTTCAAGTGCCAGACCTGCAA
CAAGGGTTTTACTCAGCTCGCCACCTGCAGAAACACTACTTGGTACACACAGGAGAGAAGCCACATGAG
TGCCAGGTCTGCCACAAGAGATTTAGCAGCACAAGCAATCTCAAGACCCACCTTCGATTGCATTCTGGAG
AAAAACCTTACCAATGTAAGGTGTGCCCTGCCAAGTTTACGCAATTTGTGCACCTGAAGTGCACAAGCG
ACTGCATACCCGGGAGCGGCCTCACAAGTGTGCCAGTGTCAAGAGCTACATCCATCTCTGCAGCCTC
AAGGTCCACCTGAAGGGCAACTGCCCTGCGGGCCAGCTGCTGGGCTGCCTTTGGAGGATCTGACCCGAA
TCAATGAAGAAATGAGAGGTTGACATCAGCGACAATGCAGACCGTCTTGAGGACATGGAGGACAGTGT
CGATGTGACCTCCATGGTGGAGAAGGAGATTCTAGCTGTGGTCAAGAAAGAGAAAGAAAGAAACAGTCTG
AAAGTGTCTTTGCAAAGAAACATGGGGAACGGCCTCCTCTCCTCAGGGTGCAGCCTCTATGAGTCATCGG
ACCTGTCCCTCATGAAGTTGCCTCACAGCAACCCACTACCTCTGGTGCCTGTAAAGGTCAAACAAGAAAC
AGTTGAACCGATGGATCCT

ACGCGTACGCGGCCGCTCGAGCAGAACTCATCTCAGAAGAGGATCTGGCAGCAATGATATCCTGGATT
ACAAGGATGACGACGATAAGGTTTAA

Protein Sequence: >MR226824 representing NM_007548
Red=Cloning site Green=Tags(s)

MLDLLLEKRVGTTLAAPKSSSGSVKFGQLAETGIMKMDMEDADMTLWTEAEFEKCTYIVNDHPWDSGAD
GGTSVQAEASLPRNLLFKYAANNSKEVIGVVSKEYIPKGTRFGPLIGEVYTNTPVKNANRKYFWRIYSR
EEFHFFIDGFNEEKSNWMRYVNPASAREQNLAACQNGMNIYFYTIKPIPANQELLVWYCRDFAERLHYP
YPGELTVINLTQTESNPKQYSSEKNELYPKSVPKREYSVKEILKLDNPSKRKDIYRSNISPFTLEKDMD
GFRKNGSPDMPFYPRVVYPIRAPLPEDFLKASLAYGMERPTYITHSPLPSSTTPSPASSPEQSLKSSS
PHSSPGNTVSPLAPGLPEHRDSYSLNVSYGSEGLGSYPGYAPAPHLPPAFIPSYNAHYPKFLLPPYGIS
SNGLSTMNNINGINNFSLFPRLYPVYSNLLSGSSLPHMMLNPASLPSSLPTDGARRLLPPEHPKEVLIPA
PHSAFSLTGAAASMKDESSPPSGSPTAGTAATSEHVVPKATSSVMAAPSTDGAMNLIKNNRMTGYKTL
PYLKKQNGKIKYECNVCAKTFGQLSNLKVHLRVHSGERPFCQTCNKGFQLAHLQKHYLVHTGKPH
CQVCHKRFSSTSNLKTHLRLHSGEKPYQCKVCPAKFTQFVHLKHLKRLHTRERPHKCAQCHKSYIHLCSL
KVHLKGNCPAGPAAGLPLEDLTRINEEIERFDISDNADRLEDMEDSVDTVSMVEKEILAVVRKEEETSL
KVSLQRNMGNGLLSSGCSLYESSDSLMLKMLPHSNPLPLVPVKVKQETVEPMDP

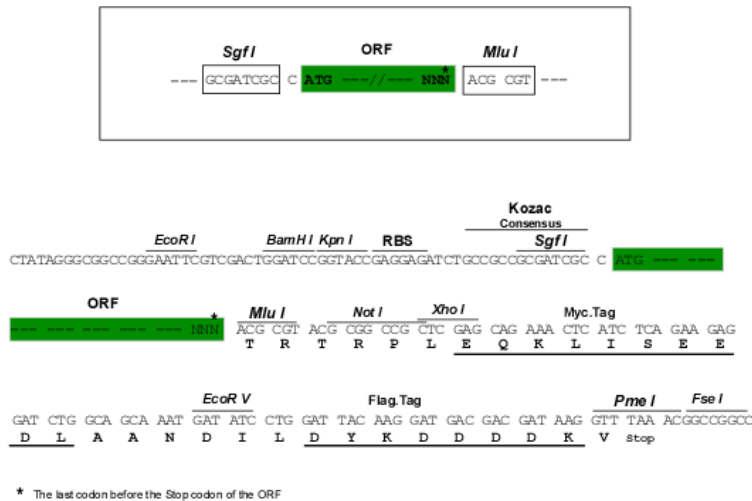
TRTRPLEQKLI SEEDLAANDILDYKDDDDKV

Chromatograms: https://cdn.origene.com/chromatograms/mm9037_e06.zip

Restriction Sites: SgfI-MluI

Cloning Scheme:

Cloning sites used for ORF Shuttling:



ACCN: NM_007548

ORF Size: 2469 bp

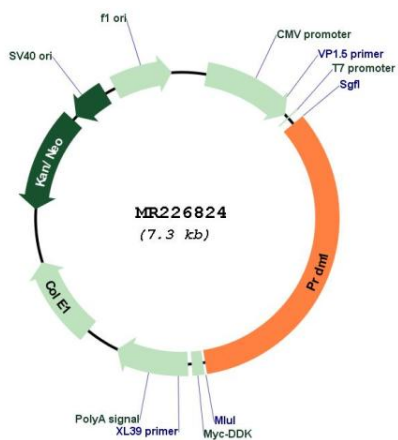
OTI Disclaimer: The molecular sequence of this clone aligns with the gene accession number as a point of reference only. However, individual transcript sequences of the same gene can differ through naturally occurring variations (e.g. polymorphisms), each with its own valid existence. This clone is substantially in agreement with the reference, but a complete review of all prevailing variants is recommended prior to use. [More info](#)

OTI Annotation: This clone was engineered to express the complete ORF with an expression tag. Expression varies depending on the nature of the gene.

Components: The ORF clone is ion-exchange column purified and shipped in a 2D barcoded Matrix tube containing 10ug of transfection-ready, dried plasmid DNA (reconstitute with 100 ul of water).

Reconstitution Method:	<ol style="list-style-type: none">1. Centrifuge at 5,000xg for 5min.2. Carefully open the tube and add 100ul of sterile water to dissolve the DNA.3. Close the tube and incubate for 10 minutes at room temperature.4. Briefly vortex the tube and then do a quick spin (less than 5000xg) to concentrate the liquid at the bottom.5. Store the suspended plasmid at -20°C. The DNA is stable for at least one year from date of shipping when stored at -20°C.
RefSeq:	NM_007548.4
RefSeq Size:	5143 bp
RefSeq ORF:	2472 bp
Locus ID:	12142
UniProt ID:	Q60636
Cytogenetics:	10 23.24 cM
MW:	92.2 kDa
Gene Summary:	<p>Transcription factor that mediates a transcriptional program in various innate and adaptive immune tissue-resident lymphocyte T cell types such as tissue-resident memory T (Trm), natural killer (trNK) and natural killer T (NKT) cells and negatively regulates gene expression of proteins that promote the egress of tissue-resident T-cell populations from non-lymphoid organs (PubMed:27102484). Plays a role in the development, retention and long-term establishment of adaptive and innate tissue-resident lymphocyte T cell types in non-lymphoid organs, such as the skin and gut, but also in other nonbarrier tissues like liver and kidney, and therefore may provide immediate immunological protection against reactivating infections or viral reinfection (PubMed:27102484). Binds specifically to the PRDI element in the promoter of the beta-interferon gene (By similarity). Drives the maturation of B-lymphocytes into Ig secreting cells (By similarity). Associates with the transcriptional repressor ZNF683 to chromatin at gene promoter regions (PubMed:27102484).[UniProtKB/Swiss-Prot Function]</p>

Product images:



Circular map for MR226824