

## Product datasheet for **MR226704**

### **Il17ra (NM\_008359) Mouse Tagged ORF Clone**

#### **Product data:**

Product Type:	Expression Plasmids
Product Name:	Il17ra (NM_008359) Mouse Tagged ORF Clone
Tag:	Myc-DDK
Symbol:	Il17ra
Synonyms:	AW538159; Cdw217; Il17r; VDw217
Mammalian Cell Selection:	Neomycin
Vector:	pCMV6-Entry (PS100001)
E. coli Selection:	Kanamycin (25 ug/mL)



[View online »](#)

**ORF Nucleotide Sequence:**

>MR226704 representing NM\_008359  
 Red=Cloning site Blue=ORF Green=Tags(s)

TTTTGTAATACGACTCACTATAGGGCGGCCGGAATTCGTCGACTGGATCCGGTACCGAGGAGATCTGCC  
 GCC**CGCATCGCC**

ATGGCGATTTCGGCGCTGCTGGCCACGGGTGCTCCCGGGCCCGCGCTGGGATGGCTGCTTCTGCTGCTGA  
 AGTTTCTGGCCCCGGCCGCGCCTCCCCGCGCCTCCTCGACTTCCCGGCTCCGGTCTGCGCGCAGGAGGG  
 GCTGAGCTGCAGAGTCAAGAATAGTACTTGTCTGGATGACAGCTGGATCCACCCAAAAACCTGACCCCG  
 TCTTCCCCAAAAACATCTATATCAATCTTAGTGTTCCTCTACCCAGCACGGAGAATTAGTCCCTGTGT  
 TGCATGTTGAGTGGACCTGCAGACAGATGCCAGCATCCTGTACCTCGAGGGTGCAGAGCTGTCCGTCT  
 GCAGCTGAACACCAATGAGCGGCTGTGTGTCAAGTTCAGTTTCTGTCCATGCTGCAGCATCACCGTAAG  
 CGGTGGCGGTTTTCTTCAGCCACTTTGTGGTAGATCCTGGCCAGGAGTGAAGTGACTGTTACCACC  
 TGCCGAAGCCCATCCCTGATGGGACCCAAACCACAAATCCAAGATCATCTTTGTGCTGACTGTGAGGA  
 CAGCAAGATGAAGATGACTACCTCATGCGTGAGCTCAGGCAGCCTTTGGGATCCCAACATCACTGTGGAG  
 ACCTTGGACACACAGCATCTGCGAGTGGACTTACCCTGTGGAATGAATCCACCCCTACCAGGTCTCTGC  
 TGGAAAGTTTCTCCGACTCAGAGAACCACAGCTGCTTGTATGTCGTTAAACAAATATTTGCGCCAGGCA  
 AGAAGAATTCATCAGCGAGCTAATGTCACATTACTCTAAGCAAGTTTCACTGGTGTGCCATCACCCAC  
 GTGCAGGTCCAGCCCTTCTTCAGCAGCTGCCTAAATGACTGTTTGGAGACCGCTGTGACTGTGCCCTGCC  
 CAGTAATCTCAAATACCACAGTTCCTCAAGCCAGTTCAGACTACATCCCTGTGGGTGTATGGCCTCAT  
 CACTCATCGCCATTCTGCTGGTGGGATCTGTATCGTGTGATCATCTGTATGACCTGGAGGCTTTCT  
 GGCGCCGATCAAGAGAAACATGGTGTGACTCCAAAATCAATGGCATCTTGCCCGTAGCAGACCTGACTC  
 CCCACCCCTGAGGCCAGGAAGTCTGGATCGTCTACTCGGCCGACCACCCCTCTATGTGGAGTGGT  
 CCTAAAGTTCGCCAGTTCCTGATCACTGCCTGTGGCACTGAAGTAGCCCTTGACCTCTGGAAGAGCAG  
 GTTATCTCTGAGGTGGGGTGTGACCTGGGTGAGCCGACAGAAGCAGGAGATGGTGGAGAGCAACTCCA  
 AAATCATCATCTGTGTTCCCGAGGCACCAAGCAAAGTGAAAGCTATCTTGGGTTGGGCTGAGCCTGC  
 TGTCCAGCTACGGTGTGACCACTGGAAGCCTGTGGGACCTTTTCACTGCAGCCATGAACATGATCCTG  
 CCAGACTCAAGAGGCCAGCCTGCTTCGGCACCTACGTTGTTTGTACTTCAGTGGCATCTGTAGTGAGA  
 GGGATGTCCCGACCTCTCAACATCACCTCCAGGTACCCACTCATGGACAGATTTGAGGAGGTTTACTT  
 CCGGATCCAGGACCTGGAGATGTTTGAACCCGGCCGATGCACCATGTCAGAGAGCTCACAGGGACAAT  
 TACCTGCAGAGCCCTAGTGGCCGCGAGCTCAAGGAGGCTGTGCTTAGGTTCCAGGAGTGGCAAACCCAGT  
 GCCCGACTGGTTCGAGCGTGAGAACCTGTGTTAGCTGATGGCCAAGATCTTCCCTCCCTGGATGAAGA  
 AGTGTGTTGAAGACCCACTGCTGCCACCAGGGGGAGGAATTGTCAAACAGCAGCCCTGGTGCGGAACTC  
 CCATCTGACGGCTGCCTTGTGGTAGATGTCTGTGTGAGTGGAGGAAAGTAGAATGGCAAAGCTGGACC  
 CTCAGCTATGGCCACAGAGAGAGCTAGTGGCTCACACCCCTCAAAGCATGGTGTGCCAGCAGAGCAGGT  
 CCCTGCAGCTCATGTGGTGGAGCCTCTCCATCTCCAGACGGCAGTGGAGCAGCTGCCAGCTGCCATG  
 ACAGAGGACAGCGAGGCTTGCCCGCTGTGGGGTCCAGAGGAACAGCATCCTTTGCCTCCCGTGGACT  
 CAGATGACTTGCCACTCTGTAGCACCCCAATGATGTACCTGACCACCTCAAAGGCGATGCAAGAGAGCA  
 GCTAGAAAAGCCTAATGCTCTCGGTGCTGCAGCAGAGCCTGAGTGGACAGCCCTGGAGAGCTGGCCGAGG  
 CCAGAGGTGGTCTCGAGGGCTGCACACCTCTGAGGAGGAGCAGCGGCAGTCCGTGCAGTCCGACAGG  
 GCTACATCTCCAGGAGCTCCCGCAGCCCCCAGTGGCTCACGAGGAGGAAGAGCTAGAAGTGGTGA  
 GCCCGTTGAGTCTCTCTCTCTGAGGAACTACGGAGCCTGAGGAAAGCTCCAGAGGAGCTTTTCTCTGG  
 GAGCTCGAGAAGAACCCTGGCTGGAACAGCTTGGAGCCACGGAGACCCACCCAGAAGAGCAGAATCCCT  
 CC

**ACGCGT**ACGCGGCCGCTCGAGCAGAACTCATCTCAGAAGAGGATCTGGCAGCAATGATATCTGGATT  
 ACAAGGATGACGACGATAAGGTTTAA

**Protein Sequence:** >MR226704 representing NM\_008359  
 Red=Cloning site Green=Tags(s)

MAIRRCWPRVVPGPALGWLLLLLNVLAPGRASPRLLDFPAPVCAQEGLSCRVKNSTCLDDSWIHPKNLTP  
 SSPKNIYINLSVSSTQHGEVLPVHLVVEWTLQTDASILYLEGAELSVLQLNTNERLCVKFQFLSMLQHHRK  
 RWRFSFSHFVVDPGQEYEVTVHHLPKPIPDPGNHKSIIIFVPDCEDSKMKMTTSCVSSGSLWDPNITVE  
 TLDTQHRLRVDFTLWNSTPYQVLLSEFSDSENHSCFDVVKQIFAPRQEEFHQRANVTFTLSKFHWCCHHH  
 VQVQPFSSCLNDCLRHAVTVPCPVISNTTVPKPVADYIPLWVYGLITLIAILLVGSVIVLIICMTWRLS  
 GADQEKHGDDSKINGILPVADLTPPPLRPRKVIWVYADHPLYVEVVLKFAQFLITACGTEVALDILLEEQ  
 VISEVGMVTWVSRQKQEMVESNSKIIILCSRGTAQKWKAILGWAEPVQLRCDHWKPAAGDLFTAAMNMIL  
 PDFKRPACFGTYVVCYFSGICSERDVPDLFNITSRYPLMDRFEEVYFRIQDLEMFEPGRMHHVRELTGDN  
 YLQSPSGRQLKEAVLRFQEWQTQCPDWFERENLCLADGQDPLSLDEEVFEDPLLPGGGIYKQQLVREL  
 PSDGCLVVDVCSSEESRMAKLDPQLWPQRELVAHTLQSMVLPAEQVPAAHVVEPLHLPDGGAAAQLPM  
 TEDSEACPLLGVQRNSILCLPVDSDLPLCSTPMSPDHLQGDAREQLESLMLSVLQQSLSGQPLESWPR  
 PEVVLEGCTPSEEEQRQSVQSDQGYISRSSQPPEWLTEEELELGEVPELSPEELRSLRKLQRQLFFW  
 ELEKNPGWNSLEPRRPTPEEQNPS

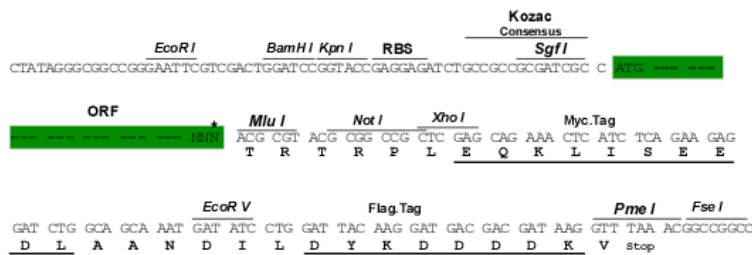
TRTRPLEQKLISEEDLAANDILDYKDDDDKV

**Chromatograms:** [https://cdn.origene.com/chromatograms/mm9012\\_g01.zip](https://cdn.origene.com/chromatograms/mm9012_g01.zip)

**Restriction Sites:** SgfI-MluI

**Cloning Scheme:**

Cloning sites used for ORF Shuttling:

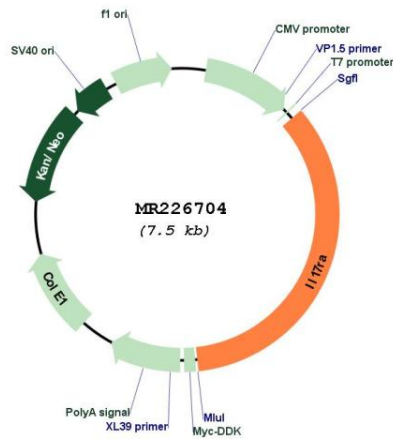


\* The last codon before the Stop codon of the ORF

<b>ACCN:</b>	NM_008359
<b>ORF Size:</b>	2592 bp
<b>OTI Disclaimer:</b>	<p>Due to the inherent nature of this plasmid, standard methods to replicate additional amounts of DNA in E. coli are highly likely to result in mutations and/or rearrangements. Therefore, OriGene does not guarantee the capability to replicate this plasmid DNA. Additional amounts of DNA can be purchased from OriGene with batch-specific, full-sequence verification at a reduced cost. Please contact our customer care team at <a href="mailto:custsupport@origene.com">custsupport@origene.com</a> or by calling 301.340.3188 option 3 for pricing and delivery.</p> <p>The molecular sequence of this clone aligns with the gene accession number as a point of reference only. However, individual transcript sequences of the same gene can differ through naturally occurring variations (e.g. polymorphisms), each with its own valid existence. This clone is substantially in agreement with the reference, but a complete review of all prevailing variants is recommended prior to use. <a href="#">More info</a></p>
<b>OTI Annotation:</b>	This clone was engineered to express the complete ORF with an expression tag. Expression varies depending on the nature of the gene.
<b>Components:</b>	The ORF clone is ion-exchange column purified and shipped in a 2D barcoded Matrix tube containing 10ug of transfection-ready, dried plasmid DNA (reconstitute with 100 ul of water).
<b>Reconstitution Method:</b>	<ol style="list-style-type: none"> <li>1. Centrifuge at 5,000xg for 5min.</li> <li>2. Carefully open the tube and add 100ul of sterile water to dissolve the DNA.</li> <li>3. Close the tube and incubate for 10 minutes at room temperature.</li> <li>4. Briefly vortex the tube and then do a quick spin (less than 5000xg) to concentrate the liquid at the bottom.</li> <li>5. Store the suspended plasmid at -20°C. The DNA is stable for at least one year from date of shipping when stored at -20°C.</li> </ol>
<b>RefSeq:</b>	<a href="#">NM_008359.2</a> , <a href="#">NP_032385.1</a>
<b>RefSeq Size:</b>	3970 bp
<b>RefSeq ORF:</b>	2595 bp
<b>Locus ID:</b>	16172
<b>UniProt ID:</b>	<a href="#">Q60943</a>
<b>Cytogenetics:</b>	6 56.95 cM
<b>MW:</b>	98.3 kDa

**Gene Summary:**

Receptor for IL17A (PubMed:17911633, PubMed:20554964, PubMed:8777726). Receptor for IL17F (PubMed:17911633, PubMed:20554964). Binds to IL17A with higher affinity than to IL17F (PubMed:17911633). Binds IL17A and IL17F homodimers as part of a heterodimeric complex with IL17RC (By similarity). Also binds heterodimers formed by IL17A and IL17F as part of a heterodimeric complex with IL17RC (By similarity). Receptor for IL17C as part of a heterodimeric complex with IL17RE (PubMed:21993848, PubMed:21993849, PubMed:21982598). Activation of IL17RA leads to induction of expression of inflammatory chemokines and cytokines such as CXCL1, CXCL8/IL8 and IL6 (By similarity).[UniProtKB/Swiss-Prot Function]

**Product images:**


Circular map for MR226704