

## Product datasheet for MR226685

### Ptprd (NM\_011211) Mouse Tagged ORF Clone

#### Product data:

**Product Type:** Expression Plasmids  
**Product Name:** Ptprd (NM\_011211) Mouse Tagged ORF Clone  
**Tag:** Myc-DDK  
**Symbol:** Ptprd  
**Synonyms:** 1110002J03Rik; 3000002J10Rik; B230219D21Rik; R-PTP-delta  
**Mammalian Cell Selection:** Neomycin  
**Vector:** pCMV6-Entry (PS100001)  
**E. coli Selection:** Kanamycin (25 ug/mL)  
**ORF Nucleotide Sequence:** >MR226685 representing NM\_011211  
 Red=Cloning site Blue=ORF Green=Tags(s)

TTTTGTAATACGACTCACTATAGGGCGGCCGGGAATTCGTCGACTGGATCCGGTACCGAGGAGATCTGCC  
 GCC**CGATCGCC**

ATGCCGTTGACAACTGCAGGATGGTGCCCGTGGCCAGGCCGCTGTCGCTGCTCCTCACCTTCTTCTCT  
 GCGCCTGTGCTGAGACACCCCCAGGTTTACACGAACTCCGGTTGATCAGACAGGGGTCTCTGGAGGAGT  
 TGCATCATTCAATTTGTCAAGCTACAGGAGACCCAAGACCTAAAATTGCTGGAACAAAAAGGAAAGAAA  
 GTCAGCAACCAGAGATTTGAGGTAATAGAATTTGACGATGGATCTGGATCAGTACTCAGAATACAGCCCT  
 TAAGGACTCCACGGGATGAGGCCATTTATGAATGTGTGGCCTCGAATAATGTGGGAGAAAATCAGTGTGTC  
 CACAAGACTCACAGTTTTACGTGAGGATCAGATTCCTAGAGGGTCCCTACGATTGATATGGGCCGCGAG  
 TTGAAGGTGGTGAACGGACCCGCACCCACCACCATGCTGTGTGCAGCCAGCGGTAATCCGGATCCAGAAA  
 TCACTTGGTTTAAAGATTTCTTACCTGTTGACACAAGCAACAACATGGTCGTATTAAGCAGTTACGATC  
 AGAATCTATTGGTGGTACACCAATAAGAGGAGCGCTGCAGATCGAACAGAGCGAAGAATCCGACCAAGGA  
 AAATACGAGTGTGTTGCCACCAACAGCGCGGCACTCGTACTCTGCCCTGCCAATTTATATGTCAGAG  
 AGCTGCGAGAAGTTCGCCGTGTCCACCAAGATTCTCTATCCCACCCACTAATCATGAAATCATGCCAGG  
 TGAAGTGTAAATATCACCTGTGTGGCAGTGGGGTCAACCAATGCCTTATGTGAAGTGGATGTTGGGGCA  
 GAAGACTGACACCAGAAGATGATATGCCGATAGGACGAAATGTCCTAGAAGTGAATGACGTAAGACAGT  
 CAGCAAATACACCTGTGTTGCTATGTCGACGTTGGGGTCAATGAAGCAATAGCCAGATCACTGTCAA  
 AGCCTTACCCAAGCCTCCAGGAACCTCTGTAGTGACCGAGAGCACAGCTACAAGCATCACACTAACATGG  
 GACTCTGGGAATCCTGAGCCTGTCTCTTACTACATCATTACAGCATAAGCCTAAAAATCTGAAGAACCAT  
 ATAAAGAAATTTGATGGGATAGCCACCACACGCTACAGTGTGGCCGATTAAGTCCCTACTCGGATTATGA  
 ATTTAGAGTTGTTGCTGTCAATAACATTGGACGAGGCCAGCAAGTGAAGCTGTGTTAACTCAGACCTCA  
 GAACAAGCACCATCCAGTGCCCCACGGGATGTTACGGCACGCATGTTGAGCTCTACCACCATTCTGGTAC  
 AATGGAAGGAACCTGAGGAGCCAAATGGACAGATCCAAGGGTATAGAGTTTATTACAATGGACCCAC  
 TCAGCATGTCAACAACCTGGATGAAACACAATGTAGCTGATAGCCAAATCACTACTATTGGCAATTTAGTA



[View online >](#)

CCCCCAAAACATACTCTGTCAAAGTCCTGGCTTTTACCTCAATTGGAGATGGACCTCTTCTAGTGATA  
 TACAAGTCATCACTCAGACAGGAGTACCAGGGCAGCCACTAAACTTCAAAGCAGAACCTGAATCTGAAAC  
 AAGTATTTTGGCTGTCTTGGACACCGCCACGATCAGATACCATTGCCAGCTATGAACTAGTCTACAGAGAT  
 GGGGATCAAGGAGAAGAGCAGCGAATCACCATTGAGCCAGGCACATCTTATAGGCTTCAAGGGCTGAAAC  
 CAAACAGCCTGTACTACTCCGTCTGTCTGCACGCTCTCCTCAAGGCCTGGGTGCTTCTACAGCTGAAAT  
 ATCAGCTAGAACCATGCAATCAATGTTTGCAAAAATTTTCATGTCAAAGCAGTTATGAAGACTTCAGTG  
 CTGCTGTCTTGGGAGATCCAGAGAATTATAATTCTGCTATGCCTTTCAAATTTTATGATGATGGGA  
 AAATGGTGAAGAAGTGATGGCCGAGCTACCCAGAAGCTGATTGTTAACCTGAAGCCTGAGAAGTCATA  
 TTCTTTGTGTTAACCAATCGTGGGAACAGTGCTGGTGGATTGCAGCATAGGGTGACAGCAAAGACTGCC  
 CCAGATGTGCTCCGCACCAAGCCTGCCTTCATTGGGAAGACAACTTGGATGGCATGATTACTGTGCAAC  
 TGCCTGATGTTCTGCAATGAAAACATAAAGGGTTACTACATTATAATTGTGCCTTTGAAGAAGTCGCG  
 TGGGAAATTCATCAAGCCCTGGGAGAGCCCTGATGAGATGGAGTTAGATGAGCTGCTTAAGGAGATATCT  
 AGAAAACGCAGAAGCATTGTTATGGAAGAGAAGTTGAATTAAGCCATATATTGCTGCTCACTTTGATG  
 TCCTTCCCACTGAGTTCACCCTGGGGGATGACAAACATTATGGTGGATTTACGAACAAACAGCTCCAAG  
 TGGACAAGAATATGCTTCTTTGTGTTAGCAGTGTGGACCATGCAGAGTCTAAGATGTATGCAACCAGC  
 CCATACTCCGACCCTGTTGTGTCATGGATCTGGATCCACAGCCAATCACAGACGAAGAGGAAGGCTTGA  
 TATGGGTCGTAGGTCTGTCTTGCAGTGGTGTATCATCTGTATTGTGATTGCTATTCTTCTTTATAA  
 AAGGAAGAGGGCAGAGTCGGAGTCCAGAAAAGAGCAGCTTACCAAACAGTAAGGAGGTCCCTTACACCAC  
 CCAACCGACCCAGTAGAACTGAGGCGCCTTAACTTTCAAACACCAGGTATGGCTAGCCATCTCCCAATAC  
 CTATCTTGGAACTTGAGATCATATTGAGAGGTTGAAAGCAAATGATAACCTGAAGTTTTCCAGGAATA  
 TGAGTCAATTGACCTGGCCAGCAGTTCACATGGGAACACTCAACTTGGAGTAAACAAACCAAGAAC  
 AGATAGCAAAATGTCATTGCATACGATCACTCCCGGTTCTTATCAGCAATAGAAGGAATCCCAGGAA  
 GTGACTATGTGAATGCCAACTACATAGATGGCTATAGGAAAACAAAATGCCTATATTGCAACCCAGGGATC  
 TCTTCTGAAACATTTGGGGACTTTTGGAGAATGATATGGGAGCAACGAAGTGCCACAGTTGTCTAGATG  
 ACAAAGCTAGAAGAAAGGTGAGGGTGAAGTGTGACCAGTATTGGCCAGCAGAGGCACAGAAAACACG  
 GGCTGGTCCAGGTGACGCTGCTGGATACTGTGGAGCTTGCACATACTGTGTCCGGACATTTGCACTTTA  
 TAAGAATGGATCGAGTGAGAAGAGGGAAGTGAGACAATTCCAGTTCACCGCCTGGCTGATCATGGTGT  
 CCAGAGCACCCACACCTTCTAGCTTCTTACGGAGAGTCAAACCTGCAATCCTCCAGATGCAGGGC  
 CAATGGTGGTACACTGCAGTGTGGTGTGGCAGAACTGGCTGCTTCATTGTAATAGATGCCATGTTAGA  
 AAGAATAAAGCATGAAAAACTGTAGATATTTATGGCCATGTAACTTAATGAGAGCCCAGAGGAATTAC  
 ATGGTACAAACAGAAGACCAGTACATCTTATCCATGATGCACTGTTAGAAGCAGTGACATGTGGAATA  
 CCGAAGTGCCGGCTAGAACTTGTATGCCTACATTCAGAAGCTGACACAATAGAAAACAGGGGAGATGT  
 CACCGGAATGGAGCTCGAATTAAGCGTCTAGCCAGCTCAAAGCTCACACCTCAAGATTCATCAGTGCC  
 AATCTTCCATGTAATAAATTCAAAAACCGCCTGTTAATATTATGCCATATGAATCCACAAGGGTGTGCC  
 TGCAGCCTATCCGAGGAGTTGAAGGCTCTGATTACATCAATGCCAGTTTCTTGTGATGATATAGACAACA  
 GAAAGCCTACATTGCTACCCAGGGGCCCTTAGCAGAGACAACCTGAAGACTTTTGGCGCATGCTTTGGGAA  
 CACAATCCACCATCGTTGTGATGCTCACCAAGCTGAGAGAAATGGGCAGAGAGAAATGTCACCAGTACT  
 GGCCAGCTGAACGATCTGCAAGTACCAGTATTTTGTGTAGATCCCATGGCTGAATATAACATGCCTCA  
 GTATATCCTGAGGGAATCAAGGTCACGGATGCCAGGATGGCCAGTCCCAGACAGTGAGGCAGTTCCAG  
 TTCCTGACTGGCCAGAACAAGGAGTGCCAAAGTCTGGAGAAGGATTTATTGACTTCATTGGCCAAGTCC  
 ATAAAAACAAAGGAGCAGTTTGGCCAAGATGGGCCATTTCCGTGCTTGCAGTGCAGGCGGCTTGAAGAAC  
 TGGAGTTTTATAACATTGAGTATTGTGTTGGAAGAATGAGATATGAAGGGGTGGTAGATATCTCCAG  
 ACTGTCAAATGTTAAGAACACAACGACCAGCCATGGTACAAACAGAGGATCAATACCAGTCTGCTATC  
 GAGCCGCACTAGAATACCTGGGCAGCTTTGATCACTATGCAACG

ACGCGTACGCGGCCGCTCGAGCAGAACTCATCTCAGAAGAGGATCTGGCAGCAAATGATATCCTGGATT  
 ACAAGGATGACGACGATAAGGTTTAA

Protein Sequence: >MR226685 representing NM\_011211  
 Red=Cloning site Green=Tags(s)

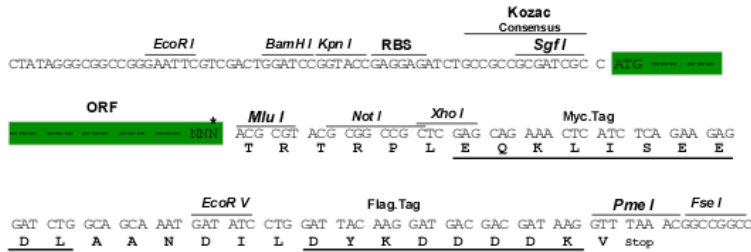
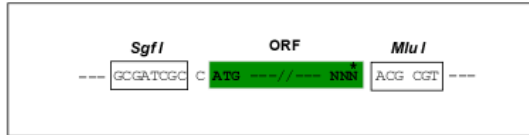
MPLTNCRMVVARPLSLLTFFLCACAETPPFRTRTPVDQTGVSGGVASFICQATGDPRPKIVWNKKGKK  
 VSNQRFEVIEFDDGSGSVLRIQPLRTPRDEAIYECVASNNVGEISVSTRLTVLREDQIPRGFPTIDMGPO  
 LKVVTRTRATMLCAASGNPDPEITWFKDFLPVDTSNNGRIKQLRSESIGGTPIRGALQIEQSEESDQG  
 KYECVATNSAGTRYAPANLYVRELREVRVPPRF SIPP TNHEIMP GGSVNITC VAVGSPMPYVKWMLGA  
 EDLTPEDDMPIGRNVLELNDVRQSANYTCVAMSTLGVIEAIAQITVKALPKPPGTPVVTSTATSITLW  
 DSGNPEPVSYIIQHKKPNSEEPYKEIDGIATTRYSVAGLSPYSDFR VAVVNNIGRGPASEPVL TQTS  
 EQAPSSAPRDVQARMLSSTTILVQWKEPEEPNGQIQGYRVYTMPTQHVNNWMKHNVDASQITIGNLV  
 PQKTYSVKVLAF T SIGDGPLSSDIQVITQTGVPGQPLNFKAPESETSILLSWTPPRSDTIASYELVYRD  
 GDQGEQRITIEPGTSYRLQGLKPNLSYFRLSARSPQGLGASTAEISARTMQSMFAKNFHVKAVMKT SV  
 LLSWEIPENYNSAMPFKILYDDGKMVEEVDGRATQKLI VNLKPEKSYSFVLTNRGNSAGGLQHRVTAKTA  
 PDVLRTPAFIGKTNLDGMTVQLPDVPANENIKGYYIIIVPLKKS R GKF IKPWESPDEMEDELLEKIS  
 RKRRSIRYGREVELKPYIAAHFDVLPTEFTLGDCKHYGGFTNKQLQSGQEYVFFVLAVMDHAESKMYATS  
 PYSDPVVSMDLPQIPITDEEEGLI WVG PVLAVVFIICIVIAIILLYKRKRAESESRKSSLPNSKEVPSHH  
 PTDPVELRRLNFQTPGMASHPIPIELEADHIERLKANDNLKFSQEYESIDPGQQFTWEHSNLEVNPKPN  
 RYANVIAYDHSRVLLSAIEGIPGSDYVNANYIDGYRQKNAYIATQGSLPETFGDFWRMIWEQRSATVMM  
 TKLEERSRVKCDQYWP SRGTETHGLVQVTLDDTVELATYCVRTFALYKNGSSEKREVRQFQFTAWPDHGV  
 PEHPTPFLAFLRRVKT CNPPDAGPMVVHCSAGVGR TGCFIVIDAMLERIKHEKTVDIYGHVTLMRAQRNY  
 MVQTEDQYIFIHDALEAVTCGNTEVPARNLYAYIQKL TQIETGENVTGMELEFKRLASSKAHTSRFISA  
 NLP CNKFKNRLVNIMPYESTRVLQPIRGVEGSDYINASF LDGYRQQKAYIATQGPLAETTEDFWRLWE  
 HNSTIVVMLTKLREMGREKCHQYWP AERSARYQYFVDPMAEY NMPQYILREFKVT DARDGQSRTVRQFQ  
 FTDWPEQGVPKSGEGFIDFIGVHKTKEQFGQDGPISVHCSAGVGR TGVFITLSIVLERMR YEGVVDIFQ  
 TVKMLRTQRPAMVQTEDQYQFCYRAALEYLGSFDHYAT

TRTRPLEQKLISEEDLAANDILDYKDDDDKV

Restriction Sites: SgfI-MluI

Cloning Scheme:

Cloning sites used for ORF Shutting:



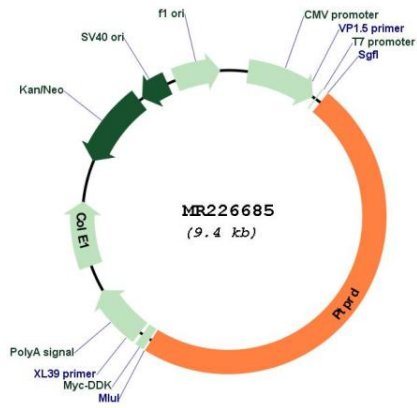
\* The last codon before the Stop codon of the ORF

ACCN: NM\_011211

ORF Size: 4524 bp

<b>OTI Disclaimer:</b>	The molecular sequence of this clone aligns with the gene accession number as a point of reference only. However, individual transcript sequences of the same gene can differ through naturally occurring variations (e.g. polymorphisms), each with its own valid existence. This clone is substantially in agreement with the reference, but a complete review of all prevailing variants is recommended prior to use. <a href="#">More info</a>
<b>OTI Annotation:</b>	This clone was engineered to express the complete ORF with an expression tag. Expression varies depending on the nature of the gene.
<b>Components:</b>	The ORF clone is ion-exchange column purified and shipped in a 2D barcoded Matrix tube containing 10ug of transfection-ready, dried plasmid DNA (reconstitute with 100 ul of water).
<b>Reconstitution Method:</b>	<ol style="list-style-type: none"><li>1. Centrifuge at 5,000xg for 5min.</li><li>2. Carefully open the tube and add 100ul of sterile water to dissolve the DNA.</li><li>3. Close the tube and incubate for 10 minutes at room temperature.</li><li>4. Briefly vortex the tube and then do a quick spin (less than 5000xg) to concentrate the liquid at the bottom.</li><li>5. Store the suspended plasmid at -20°C. The DNA is stable for at least one year from date of shipping when stored at -20°C.</li></ol>
<b>RefSeq:</b>	<a href="#">NM_011211.4</a>
<b>RefSeq Size:</b>	9127 bp
<b>RefSeq ORF:</b>	4527 bp
<b>Locus ID:</b>	19266
<b>UniProt ID:</b>	<a href="#">Q64487</a>
<b>Cytogenetics:</b>	4 36.94 cM
<b>MW:</b>	170.2 kDa
<b>Gene Summary:</b>	Can bidirectionally induce pre- and post-synaptic differentiation of neurons by mediating interaction with IL1RAP and IL1RAPL1 trans-synaptically (PubMed:25908590). Involved in pre-synaptic differentiation through interaction with SLITRK2 (PubMed:25989451). [UniProtKB/Swiss-Prot Function]

Product images:



Circular map for MR226685