

## Product datasheet for **MR226662**

### **Pcdha4 (NM\_007766) Mouse Tagged ORF Clone**

#### **Product data:**

Product Type:	Expression Plasmids
Product Name:	Pcdha4 (NM_007766) Mouse Tagged ORF Clone
Tag:	Myc-DDK
Symbol:	Pcdha4
Synonyms:	Cnr1; Crnr1; R75250
Mammalian Cell Selection:	Neomycin
Vector:	pCMV6-Entry (PS100001)
E. coli Selection:	Kanamycin (25 ug/mL)



[View online »](#)

**ORF Nucleotide Sequence:**

>MR226662 representing NM\_007766  
 Red=Cloning site Blue=ORF Green=Tags(s)

TTTTGTAATACGACTCACTATAGGGCGGCCGGGAATTCGTCGACTGGATCCGGTACCGAGGAGATCTGCC  
 GCC**CGGATCGCC**

ATGGAATTTCTGGGAAGTGCCAGGAATCCCAGCGCTTGCTCTTTCTTTCTGCTTCTTGCAATCT  
 GGGAGGCAGGGAACAGCCAGATCCACTACTCCATCCCTGAGGAGGCCAAACACGGCACCTTCGTGGGCCG  
 CATCGCGCAGGACCTGGGGCTGGAGCTGACGGAGCTGGTCCCCCGCTGTTCCAGAGTGGCGTCCAAGGAC  
 CGCGGAGACCTTCTGGAGGTAATCTGCAGAATGGCATTGTTGTTGTGAATTCTCGGATCGACCGGGAGG  
 AGCTGTGCGGGCGGAGCGGGAGTGCAGCATCCACCTGGAGGTGATCGTGGACAGGCCGTTGCAGGTTTT  
 CCACGTGGAGGTGGAGGTGAGGGACATTAACGACAACCCCTCCAGGTTCCCAACAACACAAAAGAATCTG  
 TTCATTGCAGAATCAAGGCCACTTGACACTTGGTTTCCACTAGAGGGCGCTTCAGACGCAGATATCGGAA  
 TCAATGCTGTACTGACTACAGACTGAGTCCAAATGATTACTTTCTTTGGAAAAACCATCAACGACGA  
 ACGGGTAAAAGGTCTTGGACTTGTATTACGAAATCTTTAGACCGGGAGGAACTCCAGAGATAATTTTA  
 GTGCTTACTGTCACGGACGGAGGAAAGCCAGAGCTGACCGGCAGTGTTCAGTTACTCATCACTGTGCTGG  
 ATGCCAATGATAATGCTCCAGTTTTGACAGATCTCTGTATACCGTGAAATTACCAGAAAACGTTCCAAA  
 TGGGACATTGGTAGTCAAAGTCAATGCCTCAGATTTAGACGAAGGGGTAATGGGGATATTATGACTCA  
 TTTTCTACAGATATTTACCAAAATGTGAAATACAAATCCACATAGACCCGTGTTAGCGGAGAGATTATG  
 TAAAGGGATACATTGATTTTGAAGAATGCAAAATCCTATGAAATTTCTCATAGAGGGAAATGACAAGGGACA  
 ACTTCCACTCTCTGGGCACTGTAAGTCAATGTACAAGTTGAAGACATCAACGATAATGTTCCAGAATTG  
 GAATTCAAATCTCTATCACTTCCAATACGAGAGAATTCAGTGGGCACTGTATCGCATCATTAGTG  
 TGCTGTACGGGACCGGGTGTCAACGGGCAAGTGCCTGCTCCCTGACAAGTCAATGTCCTCCCTCAAGTT  
 GGTGTCCACATTCAGAATTACTATTCTGCTCGTGGACAGCGCCCTGGACAGAGAGACAACAGCGGAC  
 TATAAGGTGGTGGTACAGCGCGGGATGGGGGCTCTCCCTCGCTGTGGGCCACGGCTAGCGTGTCTGTTG  
 AGGTTGCTGACGTGAACGACAATGCACCTGTGTTGCGCGACCCGAATACACGGTGTTCGTGAAGGAGAA  
 CAACCCGCTGGTGCACATCTTACGGTGTGAGCGATGGATGCGGACGCACAGGAGAACGCGTGGTG  
 TCCTACTCGTGGTGGAGCGGAGGGTGGGCGAGCGCTTGTGTGAGCTATGTGTCTGTGCACGCGGAGA  
 GCGGCAAGGTGTTCGCGTGCAGCCTCTGGACATGAGGAGCTGGAGCTGCTGCGGTTCCAGGTGAGCGC  
 GCGGGATGCTGGTGTACCTGCCCTGGGAGCAATGTGACTCTGCAGGTGTTGTGCTGGACGAGAATGAC  
 AACCGCCACACTGCTGGAACCTGAGGCAAGGAGTCTCTGGTGGAAATCGTGGCCGTTGGTGTCCAGAT  
 CAGTGGGTGCAGCCATGTGGTGTCTAAGTGCAGCGGGTGGATGCAGACTCTGGCTATAATGCATTGGCT  
 CTCTTATGAGCTGCAATCGTCAGAAGGCAATCCCGTAGCCTTTTCCGCTAGGTTTGTATACGGGCGAG  
 ATTAGTACTACGCGCATACTGGATGAAGCAGATTCGCCACGTGAGCGCCTTCTGGTGTGGTGAAGGACC  
 ATGGTGACCCAGCAATGATTGTTACCGCCACAGTGTGGTGTCTCTGGTAGAGAAATGGCCCGGTACCAAA  
 GGCTCCATCGCGAGTATCCACGAGTGTACACACTCTGAGGCGTCACTGGTGGATGTCAACGTGTACCTG  
 ATCATTGCCATCTGTGAGTGTCCAGCTGTAGTGTCTCAGCTGCTGTACACAGCGCTGCGCTGTT  
 CCACTGTCCCAGTGAGAGCGTGTGCGGGCCTCCAAAACCGTAATGGTGTGCTCCAGTGCAGTGGGGAG  
 CTGGTCATACTCCCAACAAGGAGGCAAGGGTGTGCTCTGGGGAGTACCACCTAAGACCGACCTCATG  
 GCCTTCAGCCCCAGTTTATCTGATTCAAGGGACAGAGAGGATCAATTGCACTGTGACAGGATTCTCTG  
 GAAAGCCCCGGCAGCCAAACCTGACTGGCGTACTCTGCCTCGCTAAGAGCAGGCATGCACAGCTCTGT  
 GCACCTGGAGGAGGCTGGCATTCTACGGGCTGGTCCAGGAGGGCCTGATCAGCAGTGGCCAACAGTATCC  
 AGTGCAACACCAGAACCTGAGGCAAGGAGGTGTCCCCTCCGGTGGGCGCGGTGTCAACAGCAACAGCT  
 GGACCTTTAAATACGGACCAGGCAACCCCAACAGTCCGGTCCCGGTGAGTTGCCAGACAAATTCATTAT  
 CCCAGGATCTCTGCAATCATCTCCATCCGCGAGGAGCCTGCTAACAAACCAATTGACAAAAGCGATTTT  
 ATAACCTTCGGCAAAAAGGAGGAGACCAAGAAAAAGAAGAAAAAGAAGGGTAACAAGACCCAGGAGA  
 AAAAAGAGAAAGGAACAGCAGCAGGACAACAGTGACCAG

**ACGCGT**ACGCGGCCGCTCGAGCAGAACTCATCTCAGAAGAGGATCTGGCAGCAAATGATATCCTGGATT  
 ACAAGGATGACGACGATAAGGTTTAA

**Protein Sequence:** >MR226662 representing NM\_007766  
 Red=Cloning site Green=Tags(s)

```
MEFSWGSQGESQRLLLSFLLLAWEAGNSQIHYSIPEEAKHGTFVGRIAQDLGLELTELVPRLFRVASKD
RGDLLLEVLNQNGILFVNSRIDREELCGRSAECSIHLEVI VDRPLQVFHVEVEVRDINDNPPRFPTTQKNL
FIAESRPLDTWFPLEGASDADIGINAVLTYRLSPNDYFSLEKPSNDERVKGLGLVLRKSLDREETPEIIL
VLTVTVDGGKPEL TGSVQLLITVLDANDNAPVFDRLSYTVKLPENVPNGTLVVKVNASDLDEGVNGDIMYS
FSTDISPNVKFKFHIDPVSGEIIVKGYIDFEECKSYEILIEGIDKGQLPLSGHCKVIVQVEDINDNVPEL
EFKSLSLPIRENSPVGTVIALISVSDRDTGVNGQVTCSLTSHVPFKLVSTFKNYSYSLVLDSDALDRETTAD
YKVVVTARDGGSPSLWATASVSVEVADVNDNAPVFAQPEYTVFKENPPGAHIFTVSAMDADAQENALV
SYSLVERRVGERLLSSYVSVHAESGKVFALQPLDHEEELLRFQVSARDAGVPALGSNVTLQVFLDEND
NAPTLLPEAGVSGGIVSRLVSRVSGAGHVVAKVRADVADSGYNWL SYELQSSEGNRSRSLFRVGLYTG
EISTTRILDEADSPRQLLVLVKDHGDPAMIVTATVLVSLVENGPVPKAPSRVSTSVTHSEASLVDVNVYL
IIAICAVSLLVLTLLLYTALRCSTVPSESVCGPPKPMVMVCSSAVGWSYSQRRQRVCSEYPPKTDLM
AFSPSLSDSRDREDQLQSAEDSSGKPRQPNPDWRYSASLRAGMHSSVHLEAGILRAGPGGPDQQWPVTS
SATPEPEAGEVSPVAGVNSNSWTFKYGPNPKQSGPGELPKFIIPGSPAIISIRQEPANNQIDKSDFI
ITFGKKEETKKKKKKKKGNKTQEKKEKGNSTTNDSDQ
```

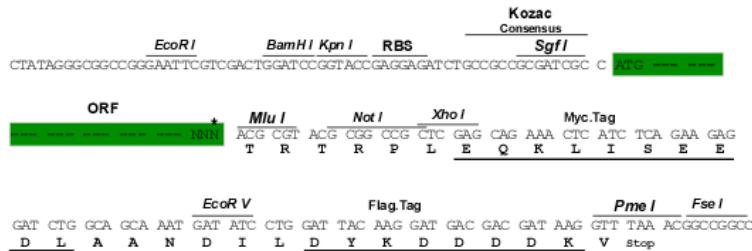
TRTRPLEQKLISEEDLAANDILDYKDDDDKV

**Chromatograms:** [https://cdn.origene.com/chromatograms/mm9002\\_h02.zip](https://cdn.origene.com/chromatograms/mm9002_h02.zip)

**Restriction Sites:** SgfI-MluI

**Cloning Scheme:**

Cloning sites used for ORF Shuttling:



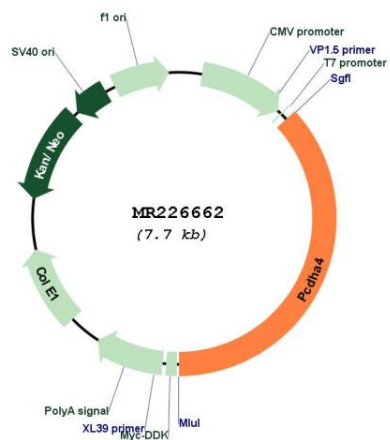
\* The last codon before the Stop codon of the ORF

**ACCN:** NM\_007766

**ORF Size:** 2841 bp

<b>OTI Disclaimer:</b>	The molecular sequence of this clone aligns with the gene accession number as a point of reference only. However, individual transcript sequences of the same gene can differ through naturally occurring variations (e.g. polymorphisms), each with its own valid existence. This clone is substantially in agreement with the reference, but a complete review of all prevailing variants is recommended prior to use. <a href="#">More info</a>
<b>OTI Annotation:</b>	This clone was engineered to express the complete ORF with an expression tag. Expression varies depending on the nature of the gene.
<b>Components:</b>	The ORF clone is ion-exchange column purified and shipped in a 2D barcoded Matrix tube containing 10ug of transfection-ready, dried plasmid DNA (reconstitute with 100 ul of water).
<b>Reconstitution Method:</b>	<ol style="list-style-type: none"><li>1. Centrifuge at 5,000xg for 5min.</li><li>2. Carefully open the tube and add 100ul of sterile water to dissolve the DNA.</li><li>3. Close the tube and incubate for 10 minutes at room temperature.</li><li>4. Briefly vortex the tube and then do a quick spin (less than 5000xg) to concentrate the liquid at the bottom.</li><li>5. Store the suspended plasmid at -20°C. The DNA is stable for at least one year from date of shipping when stored at -20°C.</li></ol>
<b>RefSeq:</b>	<a href="#">NM_007766.2</a> , <a href="#">NP_031792.1</a>
<b>RefSeq Size:</b>	5322 bp
<b>RefSeq ORF:</b>	2844 bp
<b>Locus ID:</b>	12936
<b>UniProt ID:</b>	<a href="#">O88689</a>
<b>Cytogenetics:</b>	18 B2- B3
<b>MW:</b>	103.6 kDa
<b>Gene Summary:</b>	Calcium-dependent cell-adhesion protein involved in cells self-recognition and non-self discrimination (Probable). Thereby, it is involved in the establishment and maintenance of specific neuronal connections in the brain (PubMed:27161523).[UniProtKB/Swiss-Prot Function]

Product images:



Circular map for MR226662