

Product datasheet for **MR226649**

Ncam1 (NM_010875) Mouse Tagged ORF Clone

Product data:

Product Type:	Expression Plasmids
Product Name:	Ncam1 (NM_010875) Mouse Tagged ORF Clone
Tag:	Myc-DDK
Symbol:	Ncam1
Synonyms:	CD56; E-NCAM; Ncam; NCAM-1
Mammalian Cell Selection:	Neomycin
Vector:	pCMV6-Entry (PS100001)
E. coli Selection:	Kanamycin (25 ug/mL)



[View online »](#)

ORF Nucleotide
Sequence:

>MR226649 representing NM_010875
 Red=Cloning site Blue=ORF Green=Tags(s)

TTTTGTAATACGACTCACTATAGGGCGGCCGGGAATTCGTCGACTGGATCCGGTACCGAGGAGATCTGCC
 GCC**CGCATCGCC**

ATGCTGCGAACTAAGGATCTCATCTGGACTTTGTTTTCTCTGGAACTGCAGTTTCCCTGCAGGTAGATA
 TTGTTCCAGCCAAGGAGAAATCAGCGTTGGAGAGTCCAAATTCTTCTGTGTCAAGTGGCAGGAGATGC
 CAAAGATAAGGACATCTCTGGTTCTCCCCAATGGGGAGAAGCTGAGCCCAAACAGCAGCGGATCTCA
 GTGGTGTGGAATGATGACGACTCCTCTACCCTCACCATCTACAACGCCAACATCGACGATGCCGGCATAT
 ACAAGTGTGTGGTACGGCTGAGGACGGCACCCAGTCTGAGGCCACTGTCAACGTGAAGATCTTCCAGAA
 GCTCATGTTCAAGAATGCACCAACCCACAGGAGTTTAAGGAAGGGGAGGATGCTGTGATTGTCTGTGAT
 GTGGTCAGCTCCCTGCCTCCAACCATCATCTGAAACACAAGGCCGAGATGTCATTCTGAAAAAGACG
 TCCGGTTCATAGTCTGTCCAACAACACTACCTGCAGATCAGGGGCATCAAGAAAACAGATGAGGGTACTTA
 CCGCTGTGAGGGCAGGATCCTGGCCCGGGGAAATCAACTTCAAGGACATTCAGGTCTTGTGAATGTA
 CCACCCACTGTCCAGGCCAGACAGAGCATCGTGAATGCCACTGCCAACCTGGGCCAGTCTGTACCCTGG
 TGTGTGATGCCGATGGCTTCCCAGAGCCACCATGAGCTGGACAAGGATGGGGAACCCATAGAGAACGA
 GGAGGAAGATGACGAGAAGCACATCTTCACTGATGACAGCTCCGAGCTGACCATCAGGAATGTGGATAAA
 AACGACGAGGCCGAATACGTCTGCATCGCAGAGAACAAGGCTGGCGAGCAGGATGCCTCCATCCACCTCA
 AGGTCTTTGCAAAGCCAAAAACACCTATGTAGAGAATCAGACGGCCATGGAAGTACAGGAGCAAGTCA
 TCTGACCTGTGAAGCCTCCGGAGACCCATCCCCTCCATCACCTGGAGAACATCCACCCGGAACATCAGC
 AGTGAAGAAAAGACTCTGGATGGGCACATGGTGGTTCGCAGCCATGCTCGTGTCTCTCTTGACCCTGA
 AGAGCATCCAGTACACAGATGCTGGAGAATACATCTGCACTGCCAGCAACACCATCGGCCAGGATCCCA
 GTCCATGTACCTCGAAGTTCAATATGCTCCAAGCTCCAGGGCCCTGTGGCTGTGTACACTTGGGAAGGG
 AACCGAGTGAACATCACCTGTGAGGTCTTCGCCTACCCAAGTGCCACAATCTCCTGGTTCGAGATGGTC
 AGTTGCTGCCAAGCTCCAACCTACAGCAATATCAAGATCTACAACACCCCATCTGTAGCTATCTGGAGGT
 GACCCCTGATTCAGAAAATGACTTTGGAACTACAACCTGTACAGCAGTGAACCGTATTGGACAGGAGTCC
 TTGGAATTCATCCTTGTCAAGCAGACACACCGTCTTCTCCATCCATTGACCGGGTGAACCATACTCCA
 GCACAGCGCAGGTGCAGTTTGTAGCCAGAGGCCACAGGGGGCGTGCCATTCTCAAGTACAAGGCTGA
 GTGGAAGTCGCTGGCGAAGAATCCTGGCATTTCAGTGGTATGATGCCAAGAAGCCAACATGGAAGGC
 ATGTGCACCATCATGGGCTGAAACCTGAGACGAGGTACTCGGTACGACTGGCGGCCCTCAACGGCAAGG
 GGCTGGGCGAGATCAGTGCAGCCACTGAGTTCAAGACACAGCCAGTCCGGGAACCCAGTGCACCCAAAGT
 GGAAGGGCAGATGGGAGAGGACGGAACTCCATCAAGGTGAACCTGATCAAGCAGGATGACGGAGGCTCC
 CCCATCAGACACTATCTGGTCAAGTACAGAGCGCTCGCCTCTGAGTGGAAACCGGAAATCAGGCTCCCAT
 CCGGCAGTGACCAGTCACTGCTCAAGTCCCTGGACTGGAACGCAGAGTATGAAGTCTATGTGGTAGCTGA
 AAACCAGCAAGGAAAATCCAAGGCAGCTCACTTTGTGTTCAAGACCTCAGCCCAGCCCACGGCCATCCCA
 GCCACCTGGGCGGAAGTCCACCTCTACACCTTGGTCTCATTGCTTTTCTCTGCGGTGACTCTTCTTC
 TGCTC

ACGCGTACGCGGCCGCTCGAGCAGAACTCATCTCAGAAGAGGATCTGGCAGCAAATGATATCCTGGATT
 ACAAGGATGACGACGATAAGGTTTAA

Protein Sequence: >MR226649 representing NM_010875
Red=Cloning site Green=Tags(s)

```
MLRTKDLIWTLFFLGTAVSLQVDIVPSQGEISVGESKFFLCQVAGDAKDKDISWFSPNGEKLSPNQQRIS
VWNDDSDSTLIYNANIDDAGIYKCVTAEDGTQSEATVNVKIFQKLMFNAPTQEFKEGEDAVIVCD
VVSSLPTTIIWKHKGRDVLKLDVRFIVLSNNYLQIRGIKKTDEGTYRCEGRILARGEINFKDIQVIVNV
PPTVQARQSIVNATANLQGSVTLVCDADGFPEPTMSWTKDGEPIENEEDEKHFISDDSSELTIRNVDK
NDEAEYVCIAENKAGEQDASIHKLVFAKPKITYVENQTAMELEEQVTLTCEASGDPISITWRTSTRNIS
SEEKTLDGHMVVRSHARVSSLTKSIQYTDAGEYICTASNTIGQDSQSMYLEVQYAPKLQGPVAVYTWEQ
NQVNITCEVFAYPSATISWFRDQQLPSSNYSNIKIYNTPSASYLEVTPDSENDGNYNCTAVNRIGQES
LEFILVQADTPSSPSIDRVEPYSSTAQVQFDEPEATGGVPIPKYKAEWKSLGEESWHFKWYDAKEANMEG
IVTIMGLKPETRYSVRLAALNGKGLGEISAATEFKTQPVREPSAPKLEGMGEDGNSIKVNLIKQDDGGS
PIRHYLVKYRALASEWKPEIRLPSGSDHVMLKSLDWNAEYEVYVVAENQQGKSKAAHFVVRTSAQPTAIP
ATLGGSSTSYTLVSLFSAVTLTLL
```

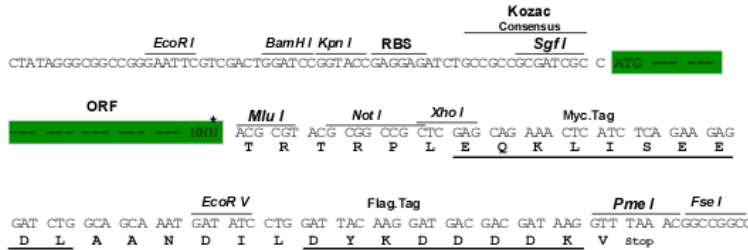
TRTRPLEQKLISEEDLAANDILDYKDDDDKV

Chromatograms: https://cdn.origene.com/chromatograms/mm9031_a04.zip

Restriction Sites: SgfI-MluI

Cloning Scheme:

Cloning sites used for ORF Shuttling:



* The last codon before the Stop codon of the ORF

ACCN: NM_010875

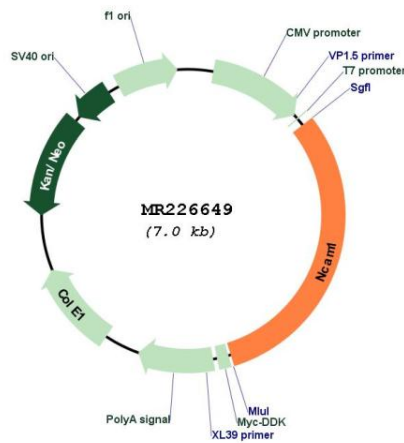
ORF Size: 2175 bp

OTI Disclaimer: The molecular sequence of this clone aligns with the gene accession number as a point of reference only. However, individual transcript sequences of the same gene can differ through naturally occurring variations (e.g. polymorphisms), each with its own valid existence. This clone is substantially in agreement with the reference, but a complete review of all prevailing variants is recommended prior to use. [More info](#)

OTI Annotation: This clone was engineered to express the complete ORF with an expression tag. Expression varies depending on the nature of the gene.

Components:	The ORF clone is ion-exchange column purified and shipped in a 2D barcoded Matrix tube containing 10ug of transfection-ready, dried plasmid DNA (reconstitute with 100 ul of water).
Reconstitution Method:	<ol style="list-style-type: none"> 1. Centrifuge at 5,000xg for 5min. 2. Carefully open the tube and add 100ul of sterile water to dissolve the DNA. 3. Close the tube and incubate for 10 minutes at room temperature. 4. Briefly vortex the tube and then do a quick spin (less than 5000xg) to concentrate the liquid at the bottom. 5. Store the suspended plasmid at -20°C. The DNA is stable for at least one year from date of shipping when stored at -20°C.
RefSeq:	<u>NM_010875.3, NP_035005.2</u>
RefSeq Size:	4885 bp
RefSeq ORF:	2178 bp
Locus ID:	17967
UniProt ID:	<u>P13595</u>
Cytogenetics:	9 26.83 cM
MW:	80.8 kDa
Gene Summary:	This protein is a cell adhesion molecule involved in neuron-neuron adhesion, neurite fasciculation, outgrowth of neurites, etc.[UniProtKB/Swiss-Prot Function]

Product images:



Circular map for MR226649