

## Product datasheet for MR226633L4

### Tfcp2l1 (NM\_023755) Mouse Tagged Lenti ORF Clone

#### Product data:

Product Type:	Expression Plasmids
Product Name:	Tfcp2l1 (NM_023755) Mouse Tagged Lenti ORF Clone
Tag:	mGFP
Symbol:	Tfcp2l1
Synonyms:	1810030F05Rik; 4932442M07Rik; AA575098; Cp2l1; Crtr-1; D930018N21Rik; LBP-9; Tfcp2l1
Mammalian Cell Selection:	Puromycin
Vector:	pLenti-C-mGFP-P2A-Puro (PS100093)
E. coli Selection:	Chloramphenicol (34 ug/mL)
ORF Nucleotide Sequence:	The ORF insert of this clone is exactly the same as(MR226633).
Restriction Sites:	SgfI-MluI
Cloning Scheme:	

Cloning sites used for ORF Shuttling:



\* The last codon before the Stop codon of the ORF.

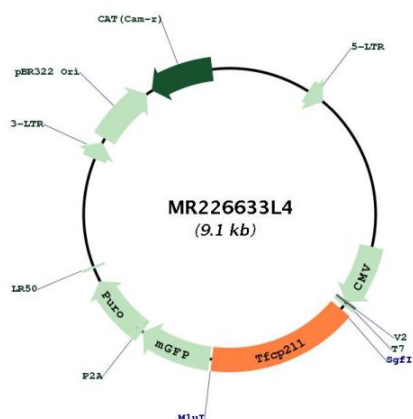
ACCN:	NM_023755
ORF Size:	1440 bp



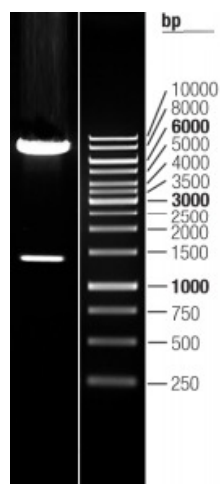
[View online »](#)

<b>OTI Disclaimer:</b>	The molecular sequence of this clone aligns with the gene accession number as a point of reference only. However, individual transcript sequences of the same gene can differ through naturally occurring variations (e.g. polymorphisms), each with its own valid existence. This clone is substantially in agreement with the reference, but a complete review of all prevailing variants is recommended prior to use. <a href="#">More info</a>
<b>OTI Annotation:</b>	This clone was engineered to express the complete ORF with an expression tag. Expression varies depending on the nature of the gene.
<b>Components:</b>	The ORF clone is ion-exchange column purified and shipped in a 2D barcoded Matrix tube containing 10ug of transfection-ready, dried plasmid DNA (reconstitute with 100 ul of water).
<b>Reconstitution Method:</b>	<ol style="list-style-type: none"> <li>1. Centrifuge at 5,000xg for 5min.</li> <li>2. Carefully open the tube and add 100ul of sterile water to dissolve the DNA.</li> <li>3. Close the tube and incubate for 10 minutes at room temperature.</li> <li>4. Briefly vortex the tube and then do a quick spin (less than 5000xg) to concentrate the liquid at the bottom.</li> <li>5. Store the suspended plasmid at -20°C. The DNA is stable for at least one year from date of shipping when stored at -20°C.</li> </ol>
<b>RefSeq:</b>	<a href="#">NM_023755.2</a> , <a href="#">NP_076244.2</a>
<b>RefSeq Size:</b>	9285 bp
<b>RefSeq ORF:</b>	1440 bp
<b>Locus ID:</b>	81879
<b>UniProt ID:</b>	<a href="#">Q3UNW5</a>
<b>Cytogenetics:</b>	1 E2.3
<b>Gene Summary:</b>	Transcription factor that facilitates establishment and maintenance of pluripotency in embryonic stem cells (ESCs) (PubMed:23942233, PubMed:26321140). With Klf2, acts as the major effector of self-renewal that mediates induction of pluripotency downstream of LIF/Stat3 and Wnt/beta-catenin signaling (PubMed:23942238, PubMed:23942233, PubMed:26321140). Required for normal duct development in the salivary gland and kidney (PubMed:17079272). Coordinates the development of the kidney collecting ducts intercalated (IC) and principal (PC) cells, which regulate acid-base and salt-water homeostasis, respectively (PubMed:28577314). Regulates the expression of IC genes including subunits B1 and D2 of the V-ATPase complex, Oxgr1, Ca12, Slc4a1, Aqp6 and IC-specific transcription factor Foxi1 (PubMed:28577314). Regulates also the expression of Jag1 and subsequent notch signaling in the collecting duct (PubMed:28577314). Jag1 initiates notch signaling in PCs but inhibits notch signaling in ICs (PubMed:28577314). Acts as a transcriptional suppressor that may suppress UBP1-mediated transcriptional activation (PubMed:11073954). Modulates the placental expression of CYP11A1 (By similarity).[UniProtKB/Swiss-Prot Function]

## Product images:



Circular map for MR226633L4



Double digestion of MR226633L4 using SgfI and MluI