

Product datasheet for MR226563

Klra8 (NM_001101620) Mouse Tagged ORF Clone

Product data:

Product Type:	Expression Plasmids
Product Name:	Klra8 (NM_001101620) Mouse Tagged ORF Clone
Tag:	Myc-DDK
Symbol:	Klra8
Synonyms:	Cmv-1; Cmv1; Ly49h; Ly49u<129>
Mammalian Cell Selection:	Neomycin
Vector:	pCMV6-Entry (PS100001)
E. coli Selection:	Kanamycin (25 ug/mL)
ORF Nucleotide Sequence:	>MR226563 representing NM_001101620 Red=Cloning site Blue=ORF Green=Tags(s)

TTTTGTAATACGACTCACTATAGGGCGGCCGGAATTCGTCGACTGGATCCGGTACCGAGGAGATCTGCC
GCC**CGATCGCC**

ATGAGTGAGCAGGAGGTCACTTTCCCAACTATGAGATTCCACAAGTCTTCAGGGTTGAACAGCCAGGTGA
GACTTGAGGGGACTCAGAGATCTAGAAAAGCTGGCCTAAGAGTGTGTTTCAGTCCCTTGGCAGCTCATTGT
GATAGCTCTTGAATCCTCTGTTCCCTTCGGCTGGTAATTGTTGCAGTGTGTTGACAAAAGTTTTTCAG
TATAGTCAACACAAACAAGAAATCAATGAAACTCTCAACCACCGCATAACTGCAGCAACATGCAAAGGG
ATTTCAACTTAAAGGAAGAAATGTTGACAAATAAGTCTATAGATTGTAGGCCAAGCTATGAACTTCTGGA
ATACATCAAAGAGAACAGGAGAGATGGGACAGTGAAACCAAGAGTGTTCAGATTCTTCAGGAGACACA
GGCAGAGGTGTTAAATACTGGTTCTGCTATGGTACTAAATGTTATTATTTTCATCATGAATAAACTACAT
GGAGTGGATGTAAGCGAACTGCCAGCATTACAGCGTTCCATTGTGAAGATAGAAGATGAAGATGAACT
GAAATTCCTTCAACGCCATGTTATTCTAGAGAGTTACTGGATTGGATTGTCATATGATAAGAAAAAAG
GAATGGGCATGGATTACAATGGCAATCTAACTTGACATGAAAATAAGAAAAATGAACTTTACGTCTA
GAGGATGTGTATTTTTATCTAAAGCAAGAATAGAAGATACTGACTGTAATACTCCCTACTACTGTATTTG
TGGGAAGAACTGGATAAATTCCTGAT

ACGCGTACGCGGCCGCTCGAGCAGAAACTCATCTCAGAAGAGGATCTGGCAGCAAATGATATCCTGGATT
ACAAGGATGACGACGATAAGGTTTAA



[View online »](#)

Protein Sequence: >MR226563 representing NM_001101620
 Red=Cloning site Green=Tags(s)

MSEQEVTFPTMRFHKSSGLNSQVRLEGTQRSRAGLRVCSVPWQLIVIALGILCSRLRVIVAVFVTKFFQ
 YSQHKQEINETLNHRHNCNMQRDFNLKEEMLTNKSIDCRPSYELLEYIKREQERWDSKTSVSDSSRDT
 GRGVKYWF CYGTKCYFFIMNKTTWSGCKANCQHYSVPIVKIEDEDELKFLQRHVILESYWIGLSYDKKKK
 EWAWIHNGQSKLDMKIKKMNFTSRGCVFLSKARIEDTDCNTPYYCIGKKLDFDPD

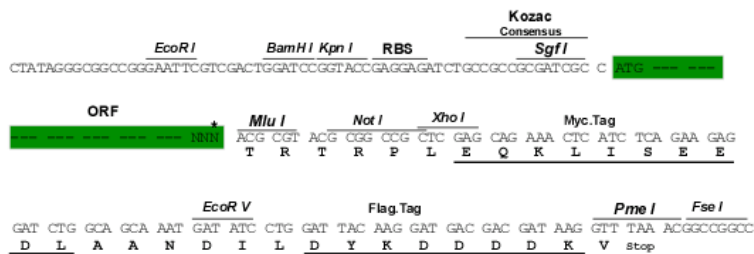
TRTRPLEQKLISEEDLAANDILDYKDDDDKV

Chromatograms: https://cdn.origene.com/chromatograms/mm9057_h06.zip

Restriction Sites: SgfI-MluI

Cloning Scheme:

Cloning sites used for ORF Shuttling:



* The last codon before the Stop codon of the ORF

ACCN: NM_001101620

ORF Size: 798 bp

OTI Disclaimer: The molecular sequence of this clone aligns with the gene accession number as a point of reference only. However, individual transcript sequences of the same gene can differ through naturally occurring variations (e.g. polymorphisms), each with its own valid existence. This clone is substantially in agreement with the reference, but a complete review of all prevailing variants is recommended prior to use. [More info](#)

OTI Annotation: This clone was engineered to express the complete ORF with an expression tag. Expression varies depending on the nature of the gene.

Components: The ORF clone is ion-exchange column purified and shipped in a 2D barcoded Matrix tube containing 10ug of transfection-ready, dried plasmid DNA (reconstitute with 100 ul of water).

Reconstitution Method:

1. Centrifuge at 5,000xg for 5min.
2. Carefully open the tube and add 100ul of sterile water to dissolve the DNA.
3. Close the tube and incubate for 10 minutes at room temperature.
4. Briefly vortex the tube and then do a quick spin (less than 5000xg) to concentrate the liquid at the bottom.
5. Store the suspended plasmid at -20°C. The DNA is stable for at least one year from date of shipping when stored at -20°C.

RefSeq: [NM_001101620.1](#), [NP_001095090.1](#)

RefSeq Size: 1178 bp

RefSeq ORF: 801 bp

Locus ID: 16639

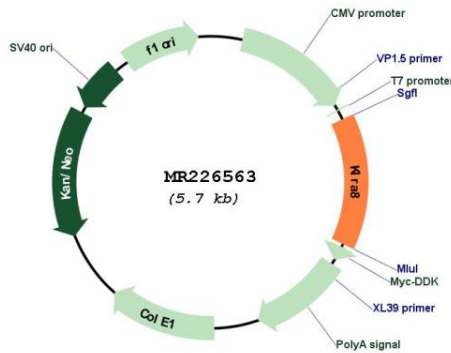
UniProt ID: [Q60682](#)

Cytogenetics: 6 63.44 cM

MW: 31.4 kDa

Gene Summary: Receptor on natural killer (NK) cells for class I MHC.[UniProtKB/Swiss-Prot Function]

Product images:



Circular map for MR226563