

Product datasheet for **MR226533**

P2ry13 (NM_028808) Mouse Tagged ORF Clone

Product data:

Product Type:	Expression Plasmids
Product Name:	P2ry13 (NM_028808) Mouse Tagged ORF Clone
Tag:	Myc-DDK
Symbol:	P2ry13
Synonyms:	2010001L06Rik; GPCR1; Gpr86; GPR94; P2Y13; P2yr13; SP174
Mammalian Cell Selection:	Neomycin
Vector:	pCMV6-Entry (PS100001)
E. coli Selection:	Kanamycin (25 ug/mL)
ORF Nucleotide Sequence:	>MR226533 ORF sequence Red=Cloning site Blue=ORF Green=Tags(s)

TTTTGTAATACGACTCACTATAGGGCGGCCGGAATTCGTCGACTGGATCCGGTACCGAGGAGATCTGCC
GCC**CGATCGCC**

ATGCTCGGGACAATCAACACCACTGGGATGCAGGGCTTCAACAAGTCTGAGCGGTGCCCCAGGGACACTC
GGATGACACAGCTGCTGTTCCCGGTTCTCTATACTGTGGTCTTCTCGCAGGCATCTGCTGAACACCGT
GGCCCTCTGGGTGTTTCGTCACATCCCCAGCAATCCACCTTTATCGTCTACCTCAAGAACACTCTGGT
GCAGACTTGATAATGGCACTCATGCTGCCTTTCAAATCCTTCCGACTCACACCTTGCGCCCTGGCAGC
TCCGAGGATTTGTGTGCACGCTCTCCTCCGTGGTCTTCTATGAGACGATGTATGTGGGTATCATGATGCT
GGGCTCATCGCTTCGACAGGTTCCCTCAAGATCATCATGCCGTTCCAGGAAAACCTTTGTCAAAAAGACG
GCTTTCGCAAAAACAGTCTCCATTTCCGTCTGGTCCCTGATGTTCTTCATCTCCCTGCCAAAACATGATCT
TGAACAAGGAGGCAACGCCATCATCCGTGAAGAAGTGTGCATCTTTGAAGAGTCCCTTGGGCTGTGGTG
GCATCAGGTGGTCAGTCACACCTGCCAGTTCATTTCTGGGCTGTGTTTATTCTGATGCTTCTGTTTTAT
GCGGTGATTACCAAAAAGGTGTACAACCTCTATAGGAAGTTTAGGAGTAAGGACAGCAGGCACAAGCGGC
TGGAGGTGAAGGTATTTATCGTCATGGCTGTCTTCTTTGTCTGCTTTGCCCACTGCATTTTGTGAGAAT
ACCATACACTTACAGTCAAACCACTAAGACTGACTGTAGGTTAGAAAACAGCTGTTTATTGCTAAA
GAAGCAACTCTTTCTGGCAACAACAACTTGTATGGACCCCTTAATATACATAATTTTATGCAAGA
AGTTCACACAAAAGGTGCCATGTGTGAGATGGGAAAGGCAAGAACAGCAGGATCAAGCGAAGACCACCA
CAGTAGTCAGACAGACAACATCACCCCTAGCC

ACGCGTACGCGGCCGCTCGAGCAGAACTCATCTCAGAAGAGGATCTGGCAGCAAATGATATCCTGGATT
ACAAGGATGACGACGATAAGGTTTAA



[View online »](#)

Protein Sequence: >MR226533 protein sequence
Red=Cloning site Green=Tags(s)

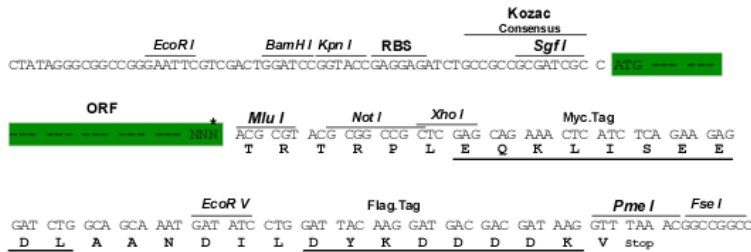
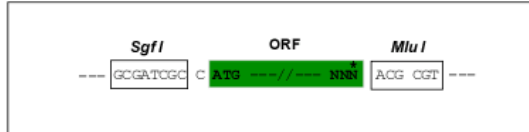
MLGTINTTGMQGFNKSERCPDRTRMTQLLFPVL YTVVFLAGILLNTVALWVVFVHIPSNSTFIVYLKNTLV
 ADLIMALMLPFKILSDSHLAPWQLRGFVCTLSSVVFYETMYVVGIMMLGLIAFDRFLKIIMPFRKTFVKKT
 AFAKTVSISVWSLMFFISLPNMILNKEATPSSVKKCASLKSPLGLWWHQVVSHTCQFIFWAVFILMLLFY
 AVITKKVYNSYRKFRSKDSRHKRLEVKVFIVMAVFFVCFAPLHFVRIPYTYSTTNKTDRCLENQLFIAK
 EATLFLATTNICMDPLIYIILCKKFTQKVPVCRWKGKARTAGSSEDDHSSQTDNITLA

TRTRPLEQKLISEEDLAANDILDYKDDDDKV

Restriction Sites: SgfI-MluI

Cloning Scheme:

Cloning sites used for ORF Shuttling:



* The last codon before the Stop codon of the ORF

ACCN: NM_028808

ORF Size: 1014 bp

OTI Disclaimer: The molecular sequence of this clone aligns with the gene accession number as a point of reference only. However, individual transcript sequences of the same gene can differ through naturally occurring variations (e.g. polymorphisms), each with its own valid existence. This clone is substantially in agreement with the reference, but a complete review of all prevailing variants is recommended prior to use. [More info](#)

OTI Annotation: This clone was engineered to express the complete ORF with an expression tag. Expression varies depending on the nature of the gene.

Components: The ORF clone is ion-exchange column purified and shipped in a 2D barcoded Matrix tube containing 10ug of transfection-ready, dried plasmid DNA (reconstitute with 100 ul of water).

Reconstitution Method:

1. Centrifuge at 5,000xg for 5min.
2. Carefully open the tube and add 100ul of sterile water to dissolve the DNA.
3. Close the tube and incubate for 10 minutes at room temperature.
4. Briefly vortex the tube and then do a quick spin (less than 5000xg) to concentrate the liquid at the bottom.
5. Store the suspended plasmid at -20°C. The DNA is stable for at least one year from date of shipping when stored at -20°C.

RefSeq: [NM_028808.3](#), [NP_083084.2](#)

RefSeq Size: 2541 bp

RefSeq ORF: 1014 bp

Locus ID: 74191

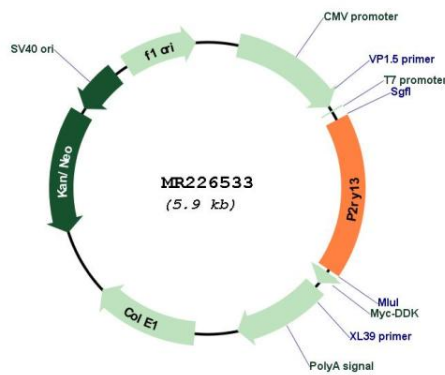
UniProt ID: [Q9D8I2](#)

Cytogenetics: 3 D

MW: 38.7 kDa

Gene Summary: Receptor for ADP. Coupled to G(i)-proteins. May play a role in hematopoiesis and the immune system (By similarity).[UniProtKB/Swiss-Prot Function]

Product images:



Circular map for MR226533