

## Product datasheet for MR226522

### Enam (NM\_017468) Mouse Tagged ORF Clone

#### Product data:

Product Type:	Expression Plasmids
Product Name:	Enam (NM_017468) Mouse Tagged ORF Clone
Tag:	Myc-DDK
Symbol:	Enam
Synonyms:	abte
Mammalian Cell Selection:	Neomycin
Vector:	pCMV6-Entry (PS100001)
E. coli Selection:	Kanamycin (25 ug/mL)
ORF Nucleotide Sequence:	>MR226522 ORF sequence Red=Cloning site Blue=ORF Green=Tags(s)

TTTTGTAATACGACTCACTATAGGGCGGCCGGAATTCGTCGACTGGATCCGGTACCGAGGAGATCTGCC  
GCC**CGATCGCC**

ATGTTGCTGCTTCAGTGCAGAAATCCGACTTCTCCTCAAAGCCATGTGGCCTGGTACCAAATGTAAGA  
TGAGTCTCCTGTTTTCTGGTCTGCTTGGTGTCTCTGCTGCCATGCCATTCCAGATGCCAATGCCCG  
AATGCCTGGATTTAGCAGTAAAAGTGAAGAGATGATGCGATATAATCAATTCACTTCATGAATGCCCA  
CCAATGATGCCTATGGGCCATATGAAATGGTATGCCAATGCCGCCACACATGCCTCCACAGTACCCTC  
CATAACCAGATGCCCATGTGGCCTCCACCAGTACCCAATGGATGGCAGCAACCCCAATGCCCAATTTCCC  
AAGCAAGACTGATCAAACCCAGGAGACCGCCAAACCAACAGACCAATCCACAAGAGCCACAGCCACAA  
AAGCAGCCTTTAAAGGAACCAAAATGAAGCAGCACGGGCCAAAGATGACGCCACGCCACCTCAGCCAT  
TCCCACCAATTTGGCAATGGACTTTACCCCTATCCACAACCACCATGGCCAATTCACAGAGGGGACCACC  
AACAGCGTTTGGACGGCCAAAGTTCAGCAATGAAGAAGGAAATCCTTACTATGCATTTTTGGATATCAC  
GGCTTTGGTGGTCTGCTTATTACTCAGAAGAGATGTTTGAAGATTATGAAAAACCAAGAAAAAGACC  
CTCCTAAACCAGAGGACCACCTCCAGATGACCCACCCAGAGGCCCTACAAACTCACTGTGCCTGA  
TGCTAATGCCACTCAATCAATTCCTGAAGCGGAAATGACACTAGCCCAATAGGAAACACAGGCCCTGGG  
CCGAACGCTGGGAACAATCCTACAGTTCAAAACGGTGTCTTCCCTCCCTAAAGTTAATGTTTTCAGGCC  
AGGGAGTACCAAAAAGCCAAATTCCTGGAGACCAAGTCAGCCAAATTTATGAGAATTATCCTTACCC  
AAATTATCCTTCAGAAAGACAATGGCAAACCACTGGTACCCAGGGCCTAGACAGAAATGGACCTGGCTAC  
CGAAATCCACAAGTTGAAAGGGTCTCAGTGGAAATCCTTTGCTTGGGAAGGCAAAACAGCTACTCGTC  
CAGGAAACCAACTTACGGTAAACCTCCCTCTCTACCTCCGGGTTAATTATGCAGGAAATCCAGTCCA  
TTTCGGAAGAAACCTGCCAGGGCCAAATAAACCTTTGTGGGAGCAATCCGGCCTCAAATAAACCTTT  
GTGGGAGCAATCCGGCCTCAAACAAACCTTTGTGGGAGCTAATCCGGCCTCAAACAAACCTTTGTGG  
GAGCAATCCGGCCTCAAATAAACCTTTGTGGGAGCAATCCGGCCTCAAATAAACCTTATGTGGGAGC  
CAATCCGGCCTCAAACAAACCTTTATAGGAGCAATCCGGCTGCAACAAACCACTATAGGAACCAAT



[View online >](#)

CCAGCCGCAAACAAACCATCTATAGGAACCAATCCAGCTGCAAATAAACCCCTTGTGAGAAACAATGTAG  
GTGCAAATAAACCCCTTGTGGGAACCAATCCCTCCTCAAACCAACCATTTCTGAGAAGCAATCAGGCCTC  
AAATAAACCATTTATGAGAAGCAATCAGGCCTCAAATAAACCATTTGTGGGCACCAATGTGGCCTCAGTG  
GGTCTAAACAGGTCAGTGTAGCCACAATATGAAAACCTAAAATCCAAAAGAAAAGTCACTAGGTCAAA  
AAGAAAGAACAGTCACTCCTACCAAGATGCAAGCAACCCCTGGAGAAGTCTAAACAATATGGAATTA  
CAATCCAACTATAATTTGCCTCGCTGTAGGGCAGCATGGTAGGCCAAATTTAATTCCTTTGATCAA  
CAAGAAAACCTCTACTTCTCAAAGGAGCTTCCAAAAGAGTACCAAGTCCATAATATACAAATCCAAAGCC  
AGAATTTGCCCAAAGGAATTGCTTTAGAGCCAAGAAGAACCCCATTTCAATCAGAAAACAAAAACCTGA  
GTTAAAACATGGTACACACCAGCCTGCATACCCTAAGAAAATCCCTTCTCCTACAAGAAAACATTTCCCT  
GCTGAAAGAAATACCTGGAATCGTCAAAAAATCCTTCCACCCTTAAAGGAAGACTATGGGAGGCAAGACG  
AAAATTTACGTACCCGTCCTATGGCTCTAGAGGAAATATTTTTTACCATGAATATACCAATCCTTATCA  
TAATGAAAATCACAGTACATTAAGCAATCCATGGGATAAGAGCTCTCCAGTACTATGATGCGGCCA  
GAAAACCCACAGTACCCATGACTTCTAGACCAGAAGGAGACAGAGCAGTACAATGAAGAGGATCCAA  
TTGATCCAAATGAAGATGAATCTTTCCAGGACAAAGTAGATGGGGGATGAAGAGATGAACTTCAAAGG  
AAACCCAACAGTTAGGCAGTATGAAGGTGAGCACTACGCCTCAACCTAGCGAAGGAATACCTTCCTTAT  
TCCTTAAGTAATCCACAAAACCCAGTGAAGATTTTCTTACAGTGAATCTATCCCTGGAACCCACAGG  
AAACGTTTCCAATATATAACCCAGGTCCTACTATAGCACCACCCGTGGACCCAGAAATTTATGTTAA  
TAATGCCATAGGACAAGAAGAAAGCACTCTTTTCTTCCATGGACCTCCTGGGACCACAGGAATCAAGCT  
GAGAGGCAGAAAGAGAGTGAAGCCATATTTAACAGAAATGTCTGGGATCAGTCAATAAATTTACACAAAT  
CTAATATACCAAACCATCCTTATCCACTACATCCCCTGCTAGATTTCCAAAAGATCCAACATGGTTTGA  
AGGTGAGAATTTGAAGTATGATTTGCAATTAAGTTAAGTCCACCAGAAAGAGAAGCAAGTTGGCTTTC  
CCAGACTTCTGCCTCAAAGTTACCCAACAGGTCAAAATGAAGCACACTTATTTACCAAAGTCAAAGAG  
GGTCTTGCTGTATTGGTGGCTCCACAGGACATAAAGACAATGTGCTGGCTCTACAAGACTACACTTCATC  
CTATGGTCTTCCACCAAGGAAGAACCAAGAAACCAAGTCCAGTGCATACAGAAAGCAGTTATATCAAGTAT  
GCAAGACCTAACGTTTCCCAGCAAGCATCCTACCTAGTCAAAGAAATATCTCAGAGAACAACTAACTG  
CAGAAAGCCCAAACCAAGTCCATTTGGAGATGGTGTGCCTACTGTGAGGAAAAATACTCCATATTCTGG  
AAAGAATCAACTAGAGACAGGAATTGTGGCCTTTTCTGAAGCCAGCTCTTCTCAGCCAAAAAACACGCC  
TGTCTTAAAGTGACCTTGGAGGAGATCGGAGGGATGTTCTGAAACAATTTTTGAAGGCAGCCAGCTGA  
GTGAAAGAACTGCTGGCCTTACTCCTGAGCAGCTCGTCATTGGTATTCTGATAAAGGCTCTGGCCAGA  
TAGCATACAAAGTGAAGTCCAAGGAAAAGAGGGTGAAGTGCAGCAACAAAGGCCACCTACCATCATGAAG  
TTGCCATGCTTTGGCTCCAATTTCAAATTTCACTTTCTACCACTGGACCTCCAATTAACAACAGAAGAC  
CAACCCTACTTAATGGTGTCTCTCCACACCCACTGAAAGTCTAACACATTGGTTGGGTTAGCTACTAG  
GGAACAACCTAAAAGTATAAACGTAGATAAACTTAATGCAGATGAACACACTACACTCGAATCTTTTCAA  
GGAACCAAGTCCACAGGACCAAGGCTGCTTACTGCTTCAGGCT

ACGCGTACGCGGCCGCTCGAGCAGAACTCATCTCAGAAGAGGATCTGGCAGCAAATGATATCCTGGATT  
ACAAGGATGACGACGATAAGGTTTAA

Protein Sequence: >MR226522 protein sequence  
 Red=Cloning site Green=Tags(s)

```

MLLLQCRNPTSPKPCGLVNVKMSLLVFLGLLGVSAAMPFQMPMPRMPGFSSKSEEMRYNQFNFMNAP
PMMPMGPYNGMPMPHPPQYPPYQMPMWPVPVNGWQPPMPNFPSTKDTQTEAKPNQTNPQEPQPQ
KQFLKEPPNEAARAKDDAQPPQFPFFGNGLYPYPQPPWPVQGRGPTAFGRPKFSNEEGNPPYAFFGYH
FGGGRPYSEEMFEDYEKPKKEDPPKPEDPPDDPPEASTNSTVPDANATQSIPEGGNDTSPIGNTGPG
PNAGNNPTVQNGVFPPPKVNVSGQGVPKSQIPWRPSQPNIEYENYPNYPSEERQWTTGTQGRQNGPGY
RNPQVERGPQWNSFAWEGKQATRPGNPTYGKPPSPTSGVNYAGNPVHFRNLPGPNKPFVGANPASNKPF
VGANPASNKPFVGANPASNKPFVGANPASNKPFVGANPASNKPYVGANPASNKPFVIGANPAANKPSIGTN
PAANKPSIGTNPAANKPFVRNNVGANKPFVGTNPNSSNPFLRSNQASNKPFMRSNQASNKPFVGTNVASV
GPKQVTVSHNMKTQNPKEKSLGQKERTVPTKASNPWRSKQYGINNPNYNLPRSEGSVMGPNFNSFDQ
QENSYFSGKASKRVPSPNIQIQSQNLKGIKALEPRRTPFQSETKKPELKHGTHQPAYPKKIPSPTRKHFP
AERNTWNRQKILPPLKEDYGRQDENLRHPSYSGRGNIFYHEYTNPHYNEKSQYIKSNPWKSSPSTMMRP
ENPQYTMSTLDQKETEYNEEDPIDPNEDESFPGQSRWGD EEMNFKGNPTVRQYEGEHYASTLAKEYLPY
SLSNPPKPSSEDFPYSEFYWNPQETFPIYNPGPTIAPPVDRSYVYVNAIQEEESTLFPWSWTDHRNQA
ERQKESSEPYFNRRNVWDQSNLHKSNIPNHPYSTTSPARFPKDPWFEGENLNYDLQITSLSPPERQLAF
PDFLFPQSYPTGQNEAHLFHQSQRGSCCIGGSTGHKDNVLAQDYTSSYGLPPRKNQETSPVHTESSYIKY
ARPNVSPASILPSQRNISENKLTAESPNSPFGDGVPTVRKNTPYSGKNQLETGIVAFSEASSSQPKNTP
CLKSDLGGDRRDVLKQFFEGSQLSERTAGLTPEQLVIGIPDKGSGPDSIQSEVQKGEEMQQRRPPTIMK
LPCFGSNSKFHSSTTGPPINRRRPTLLNGALSTPTESPNTLVGLATREQLKSNVDKLNAD EHTTLESFQ
GTSPQDQGCLLLQA
    
```

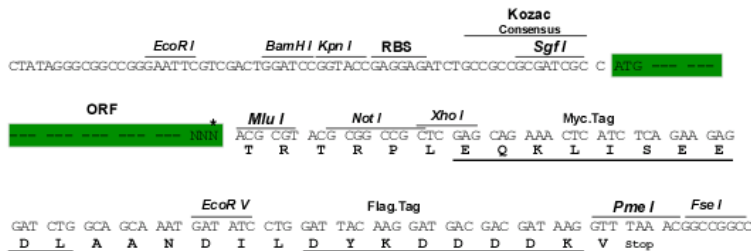
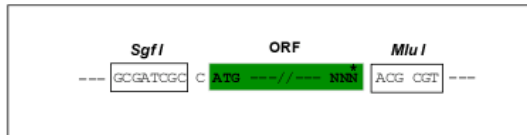
TRTRPLEQKLISEEDLAANDILDYKDDDDKV

Restriction Sites:

SgfI-MluI

Cloning Scheme:

Cloning sites used for ORF Shuttling:



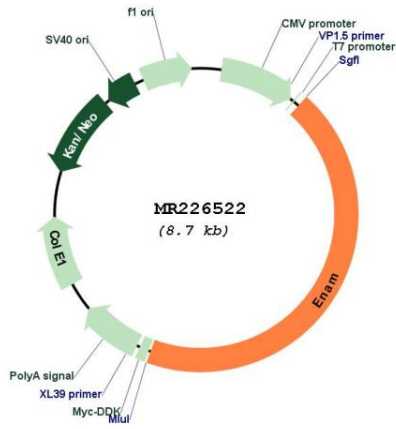
\* The last codon before the Stop codon of the ORF

ACCN: NM\_017468

ORF Size: 3825 bp

<b>OTI Disclaimer:</b>	The molecular sequence of this clone aligns with the gene accession number as a point of reference only. However, individual transcript sequences of the same gene can differ through naturally occurring variations (e.g. polymorphisms), each with its own valid existence. This clone is substantially in agreement with the reference, but a complete review of all prevailing variants is recommended prior to use. <a href="#">More info</a>
<b>OTI Annotation:</b>	This clone was engineered to express the complete ORF with an expression tag. Expression varies depending on the nature of the gene.
<b>Components:</b>	The ORF clone is ion-exchange column purified and shipped in a 2D barcoded Matrix tube containing 10ug of transfection-ready, dried plasmid DNA (reconstitute with 100 ul of water).
<b>Reconstitution Method:</b>	<ol style="list-style-type: none"> <li>1. Centrifuge at 5,000xg for 5min.</li> <li>2. Carefully open the tube and add 100ul of sterile water to dissolve the DNA.</li> <li>3. Close the tube and incubate for 10 minutes at room temperature.</li> <li>4. Briefly vortex the tube and then do a quick spin (less than 5000xg) to concentrate the liquid at the bottom.</li> <li>5. Store the suspended plasmid at -20°C. The DNA is stable for at least one year from date of shipping when stored at -20°C.</li> </ol>
<b>RefSeq:</b>	<a href="#">NM_017468.1</a> , <a href="#">NM_017468.2</a> , <a href="#">NM_017468.3</a> , <a href="#">NP_059496.1</a>
<b>RefSeq Size:</b>	5490 bp
<b>RefSeq ORF:</b>	3825 bp
<b>Locus ID:</b>	13801
<b>UniProt ID:</b>	<a href="#">O55196</a>
<b>Cytogenetics:</b>	5 E1
<b>MW:</b>	141 kDa
<b>Gene Summary:</b>	Involved in the mineralization and structural organization of enamel. Involved in the extension of enamel during the secretory stage of dental enamel formation.[UniProtKB/Swiss-Prot Function]

Product images:



Circular map for MR226522