

## Product datasheet for **MR226518**

### Blm (NM\_001042527) Mouse Tagged ORF Clone

#### Product data:

Product Type:	Expression Plasmids
Product Name:	Blm (NM_001042527) Mouse Tagged ORF Clone
Tag:	Myc-DDK
Symbol:	Blm
Mammalian Cell Selection:	Neomycin
Vector:	pCMV6-Entry (PS100001)
E. coli Selection:	Kanamycin (25 ug/mL)
ORF Nucleotide Sequence:	>MR226518 representing NM_001042527 Red=Cloning site Blue=ORF Green=Tags(s)

TTTTGTAATACGACTCACTATAGGGCGGCCGGAATTCGTCGACTGGATCCGGTACCGAGGAGATCTGCCGCC**CGATCGCC**

ATGGCTGCTGTTCTCTGAACAATCTACAAGAACAACACAGCGACTCAGCCAGAAAACCTAATAATC  
AACCCAGCCTTTCAAACCAAAATCTTTAGGTTTTACTTTTAAAAAGAAAACATCAGAGGGTGATGTGTC  
TGTCAGTAGTGTGTCCTAGTAAAAACACCTGCGTTAAGTGATAAAGATGTGAACGTGTCTGAGGCCTTT  
TCATTCAGTGTCTCCACTCCACAACCAAGCAGCAGGCAAAGATTGAAGGCTCTTTAAACATTTCC  
CTGGAAGGCAGCAAAGCAAGGGGACCTGCTCTGAGCCGTCAGTCCCGGCCACGGTACAGACTGCTCAGGA  
CACTTTGTGCACTACCCCAAAACCCCACTGCGAAGAAACTGCCCGTGGCTGTTTTCAAGAAATTAGAA  
TTTAGTCTTCTGCAGACTCCCTCAGTGACTGGGCTGATATGGATGACTTTGATATGTCAGCATCAGATG  
CGTTTGCTTCACTGGCTAAAAATCCTGCCACAAGAGTAAGCACCGCTCAGAAAATGAAAAAGACTAAGAG  
AACTTCTTTAAACCACCACCTCGTAAAGCCAATGCAGTAAAGACTGACTTGACTCCTCCCTCCCCGAA  
TGCCTGCAAGTGGATTTAACGAAGGAATCGGAGGAGGAGGAGGAGGAGGAGGAGGAGGCGGAGGGGGCGG  
ACTGCCTGAGCAGGGATGTGATCTGCATTGACAATGATTCTGCTTCTGAAGAGCTCACGGAGAAAGACAC  
GCAGGAAAGCCAGTCTTTGAAAGCTCACTTGGGAGCTGAAAGAGGTGACAGTAAAAGAAGGCCATGAA  
GACGAAGCTGTGTCCATTGAGTTCAGAACACTGAATACTTTGAACACAATGACAATGATTATGATATAG  
ATTTTGTTCCACCTTCTCCAGAAGAAATCATCTCCACTGCTTCTCCTCGTTGAAATGTTCCAGTATGTT  
AAAGGATCTTGATGACTCTGACAAGAAAAGGGCATTCTTAGCACCTCAGAAGAGCTTCTGTCAAAAACCA  
GAGGAAATGACCACACACAAGTCTGATGCAGGAACCAAGTAAAGACTGTGATGCCAGCAGATACGCATAC  
AGCAGCAGCTTATTCATGTGATGGAGCAGTCTGTAAGTTAGTTGATACTGTTCTACTGATGAAGTGG  
AGCTTTGAATTGTGGGACCGAATTGCTTCAACAACGAAACATAAGGAGGAAGCTCCTAGCTGAAGCAGGT  
TTAATGGAAATGACGTGACTTCTGGGTTCTCTGTGGAGGCACAGGCTGATTCACTTGATAACACAG  
TGCAGGGCGACTCCTGCCCTGTGGGCATCCTAATAAAGAGTTAAATTCTCCATACCTTCTCACATTC  
CCCTTCCACTGAGGAATGTTTACCACCACCACTCCAGGAAAGACAGGATTCTCAGCCACCCCGAAGAAT  
CTCTTTGAAAGCCGTTATTGAATTCCTTCCATTTACAGAAGTCTTTGTAAGTAGCAACTGGGCTGAAACAC  
CAAGGATGGAAAACAGGAACGAAAGCACTGACTTCCAGGGAGTGTCTCACCAGCACCCTGTGAAAGC



[View online >](#)

TCAGAGTAAACAAGCTGCTTCAGGATGGAACGTAGAGAGACACGGCCAGGCTTCCTATGATATCGATAAC  
TTTAATATTGATGACTTTGATGATGATGATGATGATGACTGGGAAAACATAATGCACAATTTCCAG  
CCAGCAAATCTTCCACAGCCACCTACCCACCCATCAAGGAAGGTGGGCCAGTTAAATCTCTCAGAAA  
GATTTCTTCAGCCAAGGCAAAGTTTCTCCAGTGGTATCAACCGCTCAAATACAAACCTCTCAGAGTCA  
ATTCAGAATTGCTCTGATAAGCTGGCCAAAATTTATCATCAAAAAATCCAAAACATGAACATTTTCAA  
GTCTTAATTTTCTCATACAAAAGAAATGATGAAGATTTTCCATAAGAAATTTGGCTTGCATAATTTAG  
AACTAATCAGCTAGAGGCGATCAATGCTGCGCTGCTTGGTGAAGACTGCTTTATCCTAATGCCACTGGA  
GGAGGTAAAAGTTTGTGCTACCAGCTCCCTGCCTGTGTTTCTCCTGGGGTACAATGTCAATTTCCCT  
TGAGATCACTAATAGTAGATCAAGTCCAAAAGCTGACTTCCTTTGATATTCAGTACATATCTGACAGG  
GGATAAGACTGACTCAGAAGCTGCAAAATTTTACCTCCAATTATCCAAAAAGACCCAATCATCAAGCTT  
TTGATGTTACTCCAGAGAAGGTCTGTGCAAGTAAACAGGCTGATTTCTACTCTGGAGAATCTGTATGAGC  
GGAAGCTCTTGGCACGTTTTGTCATTGATGAAGCGCATTGTGTGAGTCACTGGGGTCAATGTTTCGTCA  
AGATTACAAAAGGATGAATATGCTTCGCCAGAAGTTTCTTCTGTTCAGTATGGCCCTCACGGCCACA  
GCGAACCCAGGGTCCAGAAGGACATCCTCACTCAGCTGAAGATCCTCAGACCTCAGGTGTTTAGCATGA  
GCTTTAACAGACACAATCTGAAGTACTATGATTACCCAAGAAGCCAAAAAGTAGCATTGATTGCCCT  
AGAGTGGATCAGAAAGCATCACCTTATGACTCGGGGATAATTTACTGCCTCTCCAGGAGGGAATGTGAC  
ACAATGGCTGACACTTTACAGAGAGAAGGCTGGCTGCCCTGGCTTACCATGCGGGCCTCAGTACTCTG  
CCAGAGATGAGGTGCAGCACAAGTGGATCAACCAGGACAACCTGCCAGGTTATCTGTGCGACAATTGCGTT  
TGGAAATGGGAATTGACAAACCTGACGTGCGATTGTGATTCATGCATCTCTTCTAAATCTATGGAGGGT  
TATTATCAAGAATCCGGCCGAGCTGGAAGAGATGGGGAATATCTCACTGCGTGCCTTTCTATACATATC  
ATGATGTGACCAGACTGAAGAGACTTAAATGATGGAAAAAGATGGAACTATCATACGAAGGAACTCA  
CGTCAATAATCTATATAGCATGGTACATTACTGTGAAAACATAACGGAATGCAGAAGAATACAGCTTTTA  
GCTTACTTTGGTAAAAAGGATTCAACCCTGATTTTTGTAAAGAAATACCCAGATGTTTCTGTGACAA  
GCTGTAAAAACAAAAGGATTATAAAACAAAAGATGTGACTGATGACGTGAAAAATATTATAAGATTTGTCA  
AGAACACAGTTTCATCACCAGGAACAAGAAATATAGGACCTGCTGGAAGATTTACTCTGAACATGCTGGT  
GACATTTTCTGGGGAGCAAGAGTGCAAAAAGTTAAGTCTGGAATATTTGGAAAGGGGACTACATATTCAC  
GACATAATGCCGAAAGACTTTTTAAAAAGCTGATTCTAGACAAAATCCTGGATGAAGACTTATATATCAA  
TGCCAATGACCAACCAATTGCCTATGTGATGCTAGGAACAAAAGCCACAGTGTGCTGAGTGGCCACTTG  
AAGGTGGACTTCATGAAACGGAAAATTCAGCAGTATTAATAACAAAAGCTTTAGTGGCCAAAGTAT  
CCCAGAGAGAAGAGGTAGTTAAGAAATGTCTTGGAGAACTTACAGAGGTCTGCAAAATGCTGGGAAAGT  
CTTTGGTGTCCATTACTTCAATATTTTTAATACAGCCCACTCAAAAAGCTTGCAGAATCTTTATCTTCT  
GATCCTGAGGTTTTGCTTCAGATTGATGGTGTACCGAAGACAAGCTGGAAAAATATGGTGCAGAAGTGA  
TTCCAGTATTACAGAAGTACTCAGAATGGACAGTGCCAGCTGAGGATGGTTCCCCAGGCGCCAGAGGCGC  
CCCAGAGGACTGAGGAGGAGGAGGAGGAAGCGCCTGTATCTTCTCACTACTTTGCAAATCAAACCTAGA  
AATGAAAGAAAGAGAAAGAAAATGTGAGCCACCCATAAGCCCAAGAGGAGAAGAACTAGTTACGGTGGCT  
TCAGAGCAAAGGGGGGCTCTACTACATGCAGAAAAACGACTTCTAAAAGTAAATCTATGGTGAAGTGG  
ATCCCCTCGGCCTCATGTGCTTCTCAGGCAACATCATCAGCCAGTAGAAAACTGGGGATTATGGCTCCT  
CCAAAGCTGTAATAGAAGTTCTCAGGCCTTCATATGCCTTCTCC

ACGCGTACGCGGCGCTCGAGCAGAACTCATCTCAGAAGAGGATCTGGCAGCAAATGATATCCTGGATT  
ACAAGGATGACGACGAT AAGGTTTAA

**Protein Sequence:** >MR226518 representing NM\_001042527  
 Red=Cloning site Green=Tags(s)

```

MAAVPLNNLQEQLQRHSARKLNNQPSLSKPKSLGFTFKKKTSEGDVSVTSVSVVVKTPALSDKDVNVSEAF
SFTE SPLHKPKQQAIEGFFKHFPGRQQSKGTCSEPSLPATVQTAQDTLCTTPKTPTAKKLPVAVFKKLE
FSSADSLSDWADMDDFDMSASDAFASLAKNPATRVSTAQKMKKTKRNFKPPPRKANAVKTDLTPPSPE
CLQVDLTKESEEEEEEEEAEADCLSRDVICIDNDSASEELTEKDTQESQSLKAHLGAERGDSEKKSHE
DEAVFHSVQNTHEYFEHNDNDYDIDFVPPSPEEII STASSSLKCSSMLKDLDDSDKEKGILSTSEELLSP
EEMTTKSDAGTSKDCDAQQIRIQQLIHMVEHICKLVDTVPTDELEALNCGTELLQQRNIRRKLLAEAG
FNGNDVRLGSLWRHRPDSLNTVQGDSCPVGHPNKLNSPYLLSHSPSTEECLPTTTPGKTGFSATPKN
L FERPLLNSHLQKSFVSSNWAETPRMENRNESTDFPGSVLSTTVKAQSKQAASGWNVERHGQASYDIDN
FNIDDFDDDDDDDDWENIMHNFASKSSTATYPPIKEGGPVKSLSERISSAKAKFLPVVSTAQNTNLSSES
IQNCSDKLAQNLSSKNPKHEHFQSLNFPHTKEMMKIFHKKFGLHNFRTNQLEAINAALLGEDCFILMPTG
GGKSLCYQLPACVSPGVTIVISPLRSLIVDQVQKLT SFDIPATYLTGDKTDEAANIYQLSKKDP I I K L
LYVTPEKVCASNRLISTLENLYERKLLARFVIDEAHCVSQWGHDFRQDYKRMNMLRQKFPSVPMALTAT
ANPRVQKDILTQLKILRPQVFSMSFNHNLKYYVLPKPKKVAFDCLLEWIRKHHYPVDSGIYCLSRRECD
TMADTLQREGLAALAYHAGLSDSARDEVQHKWINQDNCQVICATIAFGMGIDKPDVRFVHIASLPKSMEG
YYQESGRAGRIDGEISHCVLFYTYHDVTRLKRLIMMEKDGNYHTKETHVNNLYSMVHYCENITECRIQLL
AYFGEKGFNPDFCKKYPDVSCDNCKTKDYKTKDVTDDVKNIRFVQEHSSSPGTRNIGPAGRFTLNMVLV
DIFLGSKSAKVKSGIFGKGTYSRHNAERL FKKLILDKILDEDLINANDQPIAYVMLGKAHVSLSGHL
KVDFMETENSSSIKKQKALVAKVSQREEVVKKCLGELTEVCKLLGKVFVGHYFNIFNTATLKKLAESLSS
DPEVLLQIDGVTEDKLEKYGAEVIPVLQKYSEWTPAEDGSPGARGAPEDTEEEEEEPVSSHVFANQTR
NERKRRKMSATHKPKRRRTSYGGFRAKGGSTTCRKTTSKSKFYGVGTGSRASASCASQATSSASRKLGIMAP
PKPVNRTFLRPSYAFS
    
```

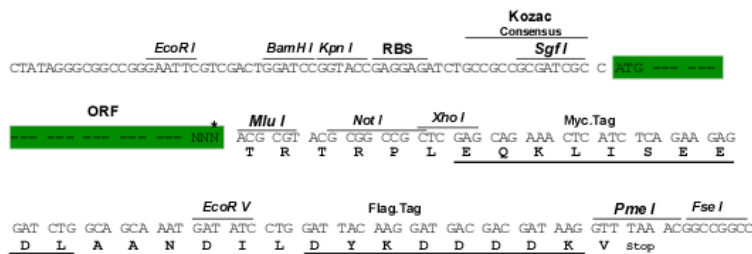
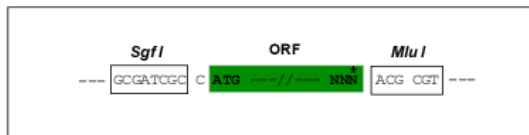
TRTRPLEQKLISEEDLAANDILDYKDDDDKV

**Chromatograms:** [https://cdn.origene.com/chromatograms/mm9040\\_h01.zip](https://cdn.origene.com/chromatograms/mm9040_h01.zip)

**Restriction Sites:** SgfI-MluI

**Cloning Scheme:**

Cloning sites used for ORF Shuttling:



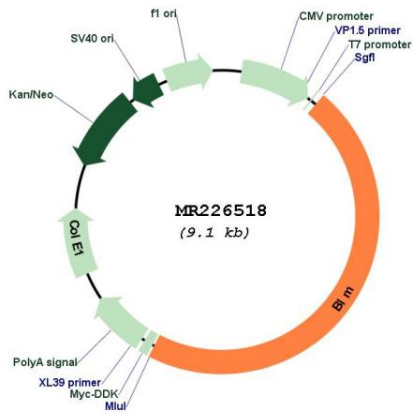
\* The last codon before the Stop codon of the ORF

**ACCN:** NM\_001042527

**ORF Size:** 4248 bp

<b>OTI Disclaimer:</b>	The molecular sequence of this clone aligns with the gene accession number as a point of reference only. However, individual transcript sequences of the same gene can differ through naturally occurring variations (e.g. polymorphisms), each with its own valid existence. This clone is substantially in agreement with the reference, but a complete review of all prevailing variants is recommended prior to use. <a href="#">More info</a>
<b>OTI Annotation:</b>	This clone was engineered to express the complete ORF with an expression tag. Expression varies depending on the nature of the gene.
<b>Components:</b>	The ORF clone is ion-exchange column purified and shipped in a 2D barcoded Matrix tube containing 10ug of transfection-ready, dried plasmid DNA (reconstitute with 100 ul of water).
<b>Reconstitution Method:</b>	<ol style="list-style-type: none"> <li>1. Centrifuge at 5,000xg for 5min.</li> <li>2. Carefully open the tube and add 100ul of sterile water to dissolve the DNA.</li> <li>3. Close the tube and incubate for 10 minutes at room temperature.</li> <li>4. Briefly vortex the tube and then do a quick spin (less than 5000xg) to concentrate the liquid at the bottom.</li> <li>5. Store the suspended plasmid at -20°C. The DNA is stable for at least one year from date of shipping when stored at -20°C.</li> </ol>
<b>RefSeq:</b>	<a href="#">NM_001042527.2</a> , <a href="#">NP_001035992.1</a>
<b>RefSeq Size:</b>	4598 bp
<b>RefSeq ORF:</b>	4251 bp
<b>Locus ID:</b>	12144
<b>UniProt ID:</b>	<a href="#">O88700</a>
<b>Cytogenetics:</b>	7 45.65 cM
<b>MW:</b>	158.8 kDa
<b>Gene Summary:</b>	ATP-dependent DNA helicase that unwinds single- and double-stranded DNA in a 3'-5' direction (PubMed:9840919). Participates in DNA replication and repair (By similarity). Involved in 5'-end resection of DNA during double-strand break (DSB) repair: unwinds DNA and recruits DNA2 which mediates the cleavage of 5'-ssDNA (PubMed:9840919). Negatively regulates sister chromatid exchange (SCE) (PubMed:9840919, PubMed:27010503). Stimulates DNA 4-way junction branch migration and DNA Holliday junction dissolution. Binds single-stranded DNA (ssDNA), forked duplex DNA and DNA Holliday junction (By similarity). [UniProtKB/Swiss-Prot Function]

Product images:



Circular map for MR226518