

Product datasheet for **MR226487**

Otud7a (NM_130880) Mouse Tagged ORF Clone

Product data:

Product Type:	Expression Plasmids
Product Name:	Otud7a (NM_130880) Mouse Tagged ORF Clone
Tag:	Myc-DDK
Symbol:	Otud7a
Synonyms:	AJ430384; Otud7
Mammalian Cell Selection:	Neomycin
Vector:	pCMV6-Entry (PS100001)
E. coli Selection:	Kanamycin (25 ug/mL)



[View online »](#)

ORF Nucleotide
Sequence:

>MR226487 representing NM_130880
 Red=Cloning site Blue=ORF Green=Tags(s)

TTTTGTAATACGACTCACTATAGGGCGGCCGGGAATTCGTCGACTGGATCCGGTACCGAGGAGATCTGCC
 GCCCGCATCGCC

ATGGTCTCTAGCCTGCTTCCAAACCCGCCCTCGGCTGAGTGTGGCAGCACTTCTACATGATCCTATGA
 CGTTGATATGGACGCAGTCCTGTCAGACTTTGTTTCGGTCCACGGGGCAGAACCCTGGTCTGGCCAGAGA
 TCTGCTGGAAGGTAAAACTGGGACCTGACAGCTGCACTAAGCGACTATGAGCAACTGCGACAGGTGCAC
 ACAGCCAACTGCCACATGTGTTCAACGAAGGGAGGTGTGCCAAGCAGGCCGAGCGAGAATTGCCCCAGC
 CTGGGCACAAGGTGGAGCGGCCCTTGCTGCAGAGGCAGGACGATATTGCCCAAGCAGAGAAGCGCCTGTC
 CCGGGGGATCTCCCATGCCAGCTCAGCCATCGTCTCCCTGGCCGATCCCACGTGGCAAATGAGTGAAC
 AATGAGCAGTTCCCACTGGAGATGCCCATCTATACATTCCAGCTGCCGGACCTGAGCGTGTACAGTGAGG
 ACTTCAGGAGCTTCATCGAACGGGACCTGATCGAGCAGGCCACTATGGTAGCTCTGGAGCAAGCAGGTCCG
 CCTGAAGTGGTGGTCTACCGTGTGCACGAGCTGTAAAAGGCTTCTCCTTTGGCCACAACAGGAGATGGG
 AACTGCCTCTTACATGCCGCTCGCTAGGAATGTGGGGCTTTCATGACCGGGACCTGGTTTTGCGGAAAG
 CTCTCTACACCATGATGAGGACGGGTGCTGAGCGGGAAGCCCTGAAGCGGAGGTGGAGGTGGCAGCAGAC
 ACAGCAGAAACAAGGAGGAGGAATGGGAGCGAGAGTGGACAGAGCTGCTAAAACCTGGCCTCCAGCGAGCCT
 CGCACACACTTCAGCAAGAATGGCAGTGGCACAGGTGGTGGTGTGGACAACCTCTGAGGACCTGTATATG
 AAAGCCTGGAAGAGTTCCATGTCTTTGTCTCGCCACATACTACGGAGACCCATTGTGGTGGTGGCAGA
 CACCATGCTAAGAGACTCTGGTGGAGAAGCATTGACCCATCCCATTGAGGGGATCTACCTGCCTTG
 GAGGTGCCTCCCAACAGGTGCCACTGCTCACCCTGGTCTGGCCTACGATCAAGCTCACTTTTCAGCC
 TAGTGTCCATGGAACAGAGAGACCAACAGAGAGAACAAGCTGTGATCCCTCTGACGGATTCGGAACACAA
 GCTGCTGCCCTTGCACTTTGCTGTGGACCCGGGAAAGGACTGGGAATGGGGGAAAGATGACAACGCAAT
 GCCCGGTTAGCCAACTCATCTGTCCCTAGAAGCCAAGCTGAACCTTCTACACAGCTACATGAATGTGA
 CGTGGATCCGCATCCCCTCCGAGACCCGGGCTCCCCTTGACAGCCAGAGTCTCCAACGGCCTCAGCAGG
 GGAGGATGTACAGTCCCTGGCGGAATCGCTGGACTCGGACCGGATTCTGTGTGCAGCAATTCCAACAGC
 AATAATGGCAAGAATGGTAAGGACAAAGAGAAGGAGAAACAGCGCAAGGACAAGGACAAGACGCGCGCG
 ACTCCGTGGCCAAACAAGCTGGGAGCTTCAAGCAAGAGCTGGGCATCAAGCTAAAGAAAAACATGGGCGG
 GCTAGGCGGCTGGTGCACGGTAAGATGGGTCTGCCAACTCTGCCAACGGCAAAAACGGGACAGCGCT
 GAGCGCAACAAGGAGAAAAAGTCCAAGTCCGCAAGGGCAGCAAGGAGGAATCGGGAGCGTCAAGCAGCA
 CCTCGCCGTCCGAGAAGACCACGCGCTCGCCACGGACAAGCGTCCGGAGCGTCCCGGCCGACAAAGGG
 GAGCGGGTCAAGAGGCGATGCCTGGAAGTACAGCACGGACGTAAGCTGAGCCTCAACATCCTGCGCGCC
 GCCATGCAAGGGCAGCGCAAATTCATCTTCCGCGGCTGCTGCTCACCAGCCACCGGCACCAGTTTCAAG
 AGGAGATGATCGGCTACTACCTGACCAGCGCGCAGGAGCGCTTTAGCGCGGAGCAAGAACAGCGCGGCG
 GGACGCGCGGCGGCTGCCGAGCAGCCACGGCCACCGCCACGGTCAAGCGGCCAGCGCGCAGGCCAGAG
 GCCGAAGTGCGCCGGGCGGAGCGCGCTCGCCGGGCCGACAGCCGCGCAGCCACGCGAGCTGGTGC
 TCAAGCTCAAGGAGCGGCGGAGCCCGGACTGGAGCGAGCGCACGGGCGGCTCGGGCGGCGGCGGCGC
 AGCATCCCGGGTCCGGGCGGCGCGCGCAGCGCGCTCCCGGTACGGGCGGACCGACTCCCGGCGC
 AGCCCGCCGCGCCCGCGCCAGAGCGTCAACAGTGCAGGCGCGGCCCGGACGAGGCGTGCAGCGC
 CGACAGTGGGCGCGCTACGGCCGTGCGGACGTAACCGCAGCAGAACCGTCTGCTGTGGTGCAGAGCTA
 CAGCCAGCGCGCAGCGCTGCGCACCGTCAATACAGTGGAGTCCCTGGCGCCCGAGGAGCGGACGCC
 CCGGGACCCGCGGAGCACAAGTGCAGACCTACAGCAACGGCTTCCGGCGAGCCCGGACGGGCTGGAGT
 TCGCCGACCGCGCGCCGCGCGCTCGAACGCTGAGTGCGGCCGCGGAGGCCCGGGCCCGCTCA
 GCGGCGTCCAGCGGAGAACTGCGGTTCTACGGGCGCGGAGACCGAGCACTTCTGCTCTATTGC
 TACCGAGAGGAGTGCGGCGGCGCGGAGGCGCGCGGCGCGGACCC

ACGCGTACGCGGCCGCTCGAGCAGAACTCATCTCAGAAGAGGATCTGGCAGCAAATGATATCCTGGATT
 ACAAGGATGACGACGATAAGGTTTAA

Protein Sequence: >MR226487 representing NM_130880
 Red=Cloning site Green=Tags(s)

MVSSLLPNPPSAECWAALLHDPMTLDMDAVL SDFV RSTGAEPGLARDLLEKGNWDLTAALSDYEQLRQVH
 TANLPHVFNEGRCAKQAERELPQPGHKVERPCLQRDDIAQAEKRLSRGISHASSAIVSLARSHVANECS
 NEQFPLEMPIYTFQLPDL SVYSEDFRSFIERDLIEQATMVALEQAGRLNWWSTVCTSCRLLPLATTGDG
 NCLLHAASLGMWGFHDRDLVLRKALYTMRTGAEREALKRRWRWQQTQQNKEEEREWETELLKLASSE
 RTHFSKNGSGTGGVDNSEDVYVESLEEFHVFVLAHILRRP VVADTMLRDSGGEAFAPIFGGIYLP
 EVPPNRCHCSPLVLAYDQAHFSALVSMEQRDQREQAVIPLTDSEHKLLPLHFAVDPGKDWEGKDDNDN
 ARLANLILSLEAKLNLHSHYMNVTWIRIPSETRAPLAQPE SPTASAGEDVQSLAESLSDRDSVCSNSNS
 NNGKNGKDKKQKDKTRADSVANKLGSF SKTLGIKLNKMGGLGGLVHGKMGANSANGKNGDSA
 ERNKEKSKSRKGSKEESGASASTSPSEKTTSPPTDKASGASPADKSGSRGD AWKYSTDVKL SLNILRA
 AMQGERKFI FAGLLL TSHRHQFHEEMIGYYL TSAQERFSAEQEQR RDAAAAAATATATVKRPARRPE
 AEGAPGERASPGPTAAQPTQLVLK LKERPSPGTGASARAARAAGGAASPGPGGGARRAAPGTGGPTPGR
 SPPAPARQSVIHVQAAAARDEACAPTVGALRPCATYPQQNRSLWSQSYSPARSALRTVNTVESLAPGGADA
 PGPAEHKSQTYSNFGAARDGLEFADADAPAARSNAECGRGGPGPAQRRCQRENC AFYGRAETEHFCSYC
 YREELRRRREARAARP

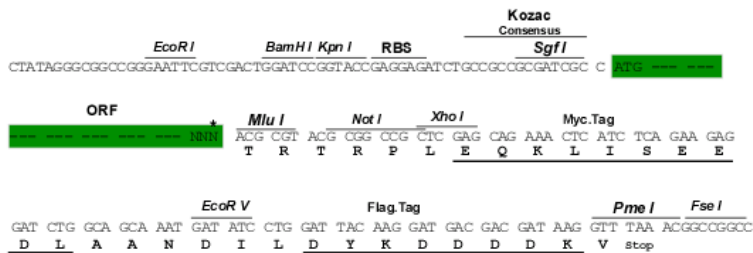
TRTRPLEQKLISEEDLAANDILDYKDDDDKV

Chromatograms: https://cdn.origene.com/chromatograms/mm9040_h10.zip

Restriction Sites: SgfI-MluI

Cloning Scheme:

Cloning sites used for ORF Shuttling:



* The last codon before the Stop codon of the ORF

ACCN: NM_130880

ORF Size: 2778 bp

OTI Disclaimer: Due to the inherent nature of this plasmid, standard methods to replicate additional amounts of DNA in E. coli are highly likely to result in mutations and/or rearrangements. Therefore, OriGene does not guarantee the capability to replicate this plasmid DNA. Additional amounts of DNA can be purchased from OriGene with batch-specific, full-sequence verification at a reduced cost. Please contact our customer care team at custsupport@origene.com or by calling 301.340.3188 option 3 for pricing and delivery.

The molecular sequence of this clone aligns with the gene accession number as a point of reference only. However, individual transcript sequences of the same gene can differ through naturally occurring variations (e.g. polymorphisms), each with its own valid existence. This clone is substantially in agreement with the reference, but a complete review of all prevailing variants is recommended prior to use. [More info](#)

OTI Annotation: This clone was engineered to express the complete ORF with an expression tag. Expression varies depending on the nature of the gene.

Components: The ORF clone is ion-exchange column purified and shipped in a 2D barcoded Matrix tube containing 10ug of transfection-ready, dried plasmid DNA (reconstitute with 100 ul of water).

Reconstitution Method:

1. Centrifuge at 5,000xg for 5min.
2. Carefully open the tube and add 100ul of sterile water to dissolve the DNA.
3. Close the tube and incubate for 10 minutes at room temperature.
4. Briefly vortex the tube and then do a quick spin (less than 5000xg) to concentrate the liquid at the bottom.
5. Store the suspended plasmid at -20°C. The DNA is stable for at least one year from date of shipping when stored at -20°C.

RefSeq: [NM_130880.1](#), [NP_570950.1](#)

RefSeq Size: 3461 bp

RefSeq ORF: 2781 bp

Locus ID: 170711

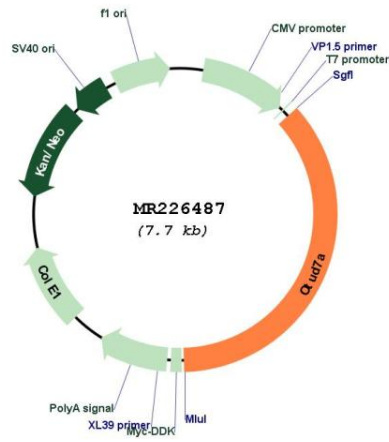
UniProt ID: [Q8R554](#)

Cytogenetics: 7 C

MW: 101.2 kDa

Gene Summary: Has deubiquitinating activity towards 'Lys-11'-linked polyubiquitin chains.[UniProtKB/Swiss-Prot Function]

Product images:



Circular map for MR226487