

Product datasheet for **MR226398**

Srsf4 (NM_020587) Mouse Tagged ORF Clone

Product data:

Product Type:	Expression Plasmids
Product Name:	Srsf4 (NM_020587) Mouse Tagged ORF Clone
Tag:	Myc-DDK
Symbol:	Srsf4
Synonyms:	5730499P16Rik; AW550192; MNCb-261; MNCb-2616; Sf; Sfrs4; SR; SRp75
Mammalian Cell Selection:	Neomycin
Vector:	pCMV6-Entry (PS100001)
E. coli Selection:	Kanamycin (25 ug/mL)



[View online »](#)

ORF Nucleotide Sequence:

>MR226398 representing NM_020587
 Red=Cloning site Blue=ORF Green=Tags(s)

TTTTGTAATACGACTCACTATAGGGCGGCCGGGAATTCGTCGACTGGATCCGGTACCGAGGAGATCTGCC
 GCCGCGATCGCC

ATGCCCGGGTGTACATCGGCCCTGAGCTACCAGGCCGGGAGCGGATGTGGAGCGCTCTTTAAGG
 GCTACGGGAAGATCCTGGAGGTGGATCTGAAGAACGGGTATGGCTTTGTGGAGTTTGATGATCTGGTGA
 TGCAGACGATGCTGTTTATGAACTGAACGGCAAAGACCTGTGTGGCAGCGAGTCAATTGTTGAGCACGCT
 CGAGGCCCGCGCGGGATGGCAGCTACGGCTCGGGACGCAGTGGATATGGTTATCGAAGAAGTGGCCGAG
 ATAATAACGGTCCCCCTACTCGCACAGAATACAGACTTATTGTGGAGAATTTGTCAAGTCGATGCAGCTG
 GCAGGACCTAAAGGATTACATGCGTCAGGCAGGAGAAGTACGATGCAGATGCTCACAAGGACGCAAA
 AACGAAGGAGTGATTGAATTTGTGCTTACTCTGATATGAAAAGAGCTTTGAAAAAGCTGGACGGAACTG
 AAGTCAACGGCAGAAAAATCAGATTAGTTGAAGACAAGCCAGGTTCTAGCGCGCCGGTCTTACTCCAG
 AAGCCGGAGTCACTCAAGGTCTCGCTCTCGAAGCAGACATCCCGGAAGAGCAGAAGCCGGAGTGGTAGC
 AGTAAAAGCAGCCATTCTGAAGAGCCGGTCTCGATCCAGGTCAGGTTCCCACTCCCGCAGCAAGAGCCGCA
 GTCGACGTGAGAGCCGACGCCGAGTAAGAAGGAGAAAAGCCGGAGCCCAAGCAAAAGAGCCG
 CAGTTCGACGCCGAGCCCTGACAAGAGCCGAGTAAGAGTAAAGACCACGCCGAGGACAAGCTCCAAAAC
 AACGACAGCGCCGCAAAGCCAAAGAGCCACAGCCCGCCGATGACAGTAAAAGTCCGAGCAGGAGCC
 AGGAGAGGAGAGCAGAGGAGGAGAGGCGAAGGAGCGTGAAGAGGCTCGCAGCCAGGAGAAGAGCCGAG
 CCAGGAGAAGAGCCTTCTCAAGAGCCGACGCCGAGCAAGGTGGCAGCCGGAGCCGACGCCGAGCCG
 AGCAAGGACAAGCGGAAGGAAGGAAGAGAAGCAGGACGAAAGTCAAGCCGACGCCGAGCAAGAGCCG
 AGCCGACCCGAAAACACAGCAGCAAGCGGACAGCAAAAGTCAAGTCAAGCAGCAGCAAGAAGAAGAAGGA
 CACCGACCACTCCCGGTACCGTCCCGTCCGTTGTCAAAGGAGCGCAACATGCCAAGGCAGAGTCTGGC
 CAGAGGAAAAGCCGGCAGAGGGTGAAGAGCGAGGCCCAATCCAGAGCCCGGGCCAGGTCAAGATCCA
 CCTCCAAATCCAAACCAATGTCCCGCAGAGTCCGCTCCAGGTCAAAATCGGCTTCAAAAACAGCTC
 TCGGTCCAAGTCTCCATCCAGGTCTGTTCCAGGTCCGCTCCCGGTCTAGATCCAGGTCCCACTCAAGG
 TCC

ACGCGTACGCGGCCGCTCGAGCAGAACTCATCTCAGAAGAGGATCTGGCAGCAATGATATCCTGGATT
 ACAAGGATGACGACGATAAGGTTTAA

Protein Sequence:

>MR226398 representing NM_020587
 Red=Cloning site Green=Tags(s)

MPRVYIGRLSYQARERDVERFFKGYGKILEVDLKNYGFVEFDLDRDADDAVYELNGKDLGGERVIVEHA
 RGPRRDGSGYSGRSGYRRSGRDYGPPTREYRLIVENLSSRCSWQDLKDYMRQAGEVTYADAHKGRK
 NEGVIIEFVSYSDMKRALEKLDGTEVNGRKIRLVEDKPGSRRRRSYSRSRSHSRSRSRHSRKSRSRSGS
 SKSSHSKRSRSGSHSRKSRSRQSRSRSHKESRSPSKDNKSRSRSPDKSRKSKDHAEDKLQN
 NDSAGKAKSHSPSRHDSKSRSRQERRAEERRRSVSRARSQEKSRSEQESLLKSRSRSRKVGSRSRSR
 SKDKRKRKRSRDESRSRSRKSERSRKHSKRDSKVSSSSSKKKKTDHRSRSPSRVSKEREHAKAESG
 QRESRAEGESEAPNPEPRARSRSTSKSKPNVPAESRSRKSKASKTRSRKSPSRASRSPSRSRSRSHR
 S

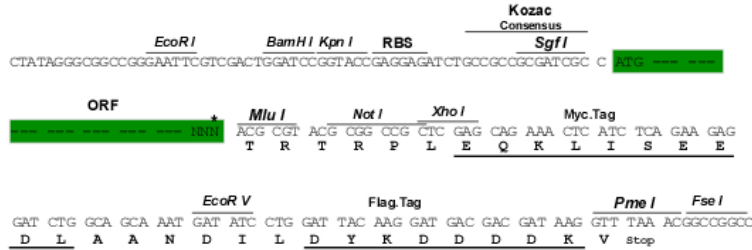
TRTRPLEQKLISEEDLAANDILDYKDDDDKV

Restriction Sites:

Sgfl-MluI

Cloning Scheme:

Cloning sites used for ORF Shuttling:



* The last codon before the Stop codon of the ORF

ACCN: NM_020587

ORF Size: 1473 bp

OTI Disclaimer: The molecular sequence of this clone aligns with the gene accession number as a point of reference only. However, individual transcript sequences of the same gene can differ through naturally occurring variations (e.g. polymorphisms), each with its own valid existence. This clone is substantially in agreement with the reference, but a complete review of all prevailing variants is recommended prior to use. [More info](#)
OTI Annotation: This clone was engineered to express the complete ORF with an expression tag. Expression varies depending on the nature of the gene.

Components: The ORF clone is ion-exchange column purified and shipped in a 2D barcoded Matrix tube containing 10ug of transfection-ready, dried plasmid DNA (reconstitute with 100 ul of water).

Reconstitution Method:

1. Centrifuge at 5,000xg for 5min.
2. Carefully open the tube and add 100ul of sterile water to dissolve the DNA.
3. Close the tube and incubate for 10 minutes at room temperature.
4. Briefly vortex the tube and then do a quick spin (less than 5000xg) to concentrate the liquid at the bottom.
5. Store the suspended plasmid at -20°C. The DNA is stable for at least one year from date of shipping when stored at -20°C.

RefSeq: [NM_020587.2](#), [NP_065612.2](#)
RefSeq Size: 2254 bp

RefSeq ORF: 1476 bp

Locus ID: 57317

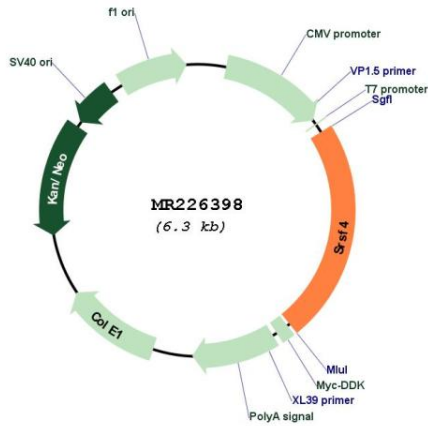
Cytogenetics: 4 D2.3

MW: 56.7 kDa

Gene Summary:

The protein encoded by this gene is a member of the serine/arginine (SR)-rich family of pre-mRNA splicing factors, which constitute part of the spliceosome. Each of these factors contains an RNA recognition motif (RRM) for binding RNA and an RS domain for binding other proteins. The RS domain is rich in serine and arginine residues and facilitates interaction between different SR splicing factors. In addition to being critical for mRNA splicing, the SR proteins have also been shown to be involved in mRNA export from the nucleus and in translation. [provided by RefSeq, Sep 2010]

Product images:



Circular map for MR226398