

Product datasheet for **MR226357L4V**

Klf2 (NM_008452) Mouse Tagged ORF Clone Lentiviral Particle

Product data:

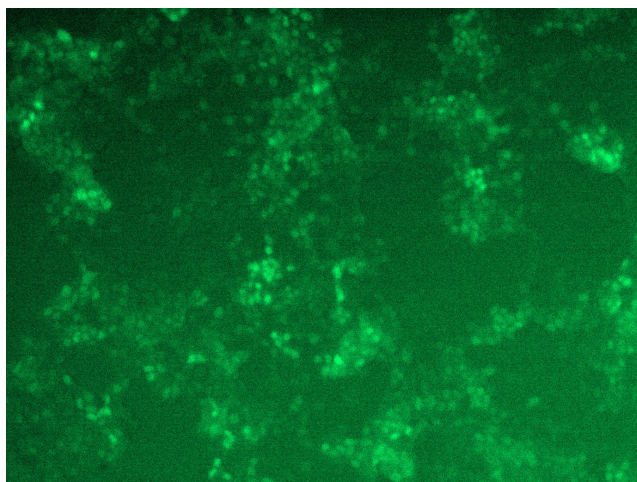
Product Type:	Lentiviral Particles
Product Name:	Klf2 (NM_008452) Mouse Tagged ORF Clone Lentiviral Particle
Symbol:	Klf2
Synonyms:	Lklf
Mammalian Cell Selection:	Puromycin
Vector:	pLenti-C-mGFP-P2A-Puro (PS100093)
Tag:	mGFP
ACCN:	NM_008452
ORF Size:	1062 bp
ORF Nucleotide Sequence:	The ORF insert of this clone is exactly the same as(MR226357).
OTI Disclaimer:	The molecular sequence of this clone aligns with the gene accession number as a point of reference only. However, individual transcript sequences of the same gene can differ through naturally occurring variations (e.g. polymorphisms), each with its own valid existence. This clone is substantially in agreement with the reference, but a complete review of all prevailing variants is recommended prior to use. More info
OTI Annotation:	This clone was engineered to express the complete ORF with an expression tag. Expression varies depending on the nature of the gene.
RefSeq:	NM_008452.2 , NP_032478.2
RefSeq Size:	1816 bp
RefSeq ORF:	1065 bp
Locus ID:	16598
UniProt ID:	Q60843
Cytogenetics:	8 B3.3



[View online »](#)

Gene Summary: Transcription factor that binds to the CACCC box in the promoter of target genes such as HBB/beta globin or NOV and activates their transcription. Might be involved in transcriptional regulation by modulating the binding of the RARA nuclear receptor to RARE DNA elements (By similarity).[UniProtKB/Swiss-Prot Function]

Product images:



[MR226357L4] was used to prepare Lentiviral particles using [TR30037] packaging kit. HEK293T cells were transduced with MR226357L4V particle to overexpress human Klf2-mGFP fusion protein.