

Product datasheet for MR226279

Cd40lg (NM_011616) Mouse Tagged ORF Clone

Product data:

Product Type:	Expression Plasmids
Product Name:	Cd40lg (NM_011616) Mouse Tagged ORF Clone
Tag:	Myc-DDK
Symbol:	Cd40lg
Synonyms:	CD40-L; Cd40l; CD154; gp39; HIGM1; IGM; IMD3; Ly-62; Ly62; T-BAM; Tnfsf5; Tnlg8b; TRAP
Mammalian Cell Selection:	Neomycin
Vector:	pCMV6-Entry (PS100001)
E. coli Selection:	Kanamycin (25 ug/mL)
ORF Nucleotide Sequence:	>MR226279 representing NM_011616 Red=Cloning site Blue=ORF Green=Tags(s)

TTTTGTAATACGACTCACTATAGGGCGCCGGGAATTCGTCGACTGGATCCGGTACCGAGGAGATCTGCC
GCC**CGGATCGCC**

ATGATAGAAACATACAGCCAACCTTCCCCCAGATCCGTGGCAACTGGACTTCCAGCGAGCATGAAGATTT
TTATGTATTTACTTACTGTTTTTCCTTATCACCCAAATGATTGGATCTGTGCTTTTTGCTGTGTATCTTCA
TAGAAGATTGGATAAGGTCGAAGAGGAAGTAAACCTTCATGAAGATTTTGTATTCATAAAAAAGCTAAAG
AGATGCAACAAAGGAGAAGGATCTTTATCCTTGCTGAACTGTGAGGAGATGAGAAGGCAATTTGAAGACC
TTGTCAAGGATATAACGTTAAACAAAGAAGAGAAAAAAGAAAACAGCTTTGAAATGCAAAGAGGTGATGA
GGATCCTCAAATTCAGCACACGTTGTAAGCGAAGCCAACAGTAATGCAGCATCCGTTCTACAGTGGGCC
AAGAAAGGATATTATACCATGAAAAGCAACTTGGTAATGCTTGAATGGAAACAGCTGACGGTTAAAA
GAGAAGGACTCTATTATGTCTACACTCAAGTCACCTTCTGCTCTAATCGGGAGCCTTCGAGTCAACGCC
ATTCATCGTCGGCCTCTGGCTGAAGCCCAGCAGTGGATCTGAGAGAATCTTACTCAAGCGGCAAAATACC
CACAGTTCCTCCAGCTTTGCGAGCAGCAGTCTGTTCACTTGGCGGAGTGTGTTGAATTACAAGCTGGTG
CTTCTGTGTTTGTCAACGTGACTGAAGCAAGCCAAGTGATCCACAGAGTTGGCTTCTCATCTTTGGCTT
ACTCAAATC

ACGCGTACGCGGCCGCTCGAGCAGAAACTCATCTCAGAAGAGGATCTGGCAGCAAATGATATCCTGGATT
ACAAGGATGACGACGATAAGGTTTAA



[View online »](#)

Protein Sequence: >MR226279 representing NM_011616
Red=Cloning site Green=Tags(s)

MIETYSQSPRSVATGLPASMKIFMYLLTVFLITQMIGSVLFAVYLHRRLDKVEEEVNLHEDFVFIKLLK
 RCNKGESLSLLNCEEMRRQFEDLVKDI TLNKEEKENSFEMQRGDEDPQIAAHVSEANSNAASVLQWA
 KKGYYTMKSNLVLENGKQLTVKREGLYVYVTQVTFCSNREPSSQRPFI VGLWLKPSSGSERILLKAANT
 HSSSQLCEQQSVHLGGVFELQAGASVFNVTASQVIHRVGFSSFGLLKL

TRTRPLEQKLISEEDLAANDILDYKDDDDKV

Restriction Sites: SgfI-MluI

Cloning Scheme:

Cloning sites used for ORF Shuttling:



* The last codon before the Stop codon of the ORF

ACCN: NM_011616

ORF Size: 780 bp

OTI Disclaimer: The molecular sequence of this clone aligns with the gene accession number as a point of reference only. However, individual transcript sequences of the same gene can differ through naturally occurring variations (e.g. polymorphisms), each with its own valid existence. This clone is substantially in agreement with the reference, but a complete review of all prevailing variants is recommended prior to use. [More info](#)

OTI Annotation: This clone was engineered to express the complete ORF with an expression tag. Expression varies depending on the nature of the gene.

Components: The ORF clone is ion-exchange column purified and shipped in a 2D barcoded Matrix tube containing 10ug of transfection-ready, dried plasmid DNA (reconstitute with 100 ul of water).

Reconstitution Method:

1. Centrifuge at 5,000xg for 5min.
2. Carefully open the tube and add 100ul of sterile water to dissolve the DNA.
3. Close the tube and incubate for 10 minutes at room temperature.
4. Briefly vortex the tube and then do a quick spin (less than 5000xg) to concentrate the liquid at the bottom.
5. Store the suspended plasmid at -20°C. The DNA is stable for at least one year from date of shipping when stored at -20°C.

RefSeq: [NM_011616.2](#), [NP_035746.2](#)

RefSeq Size: 1250 bp

RefSeq ORF: 783 bp

Locus ID: 21947

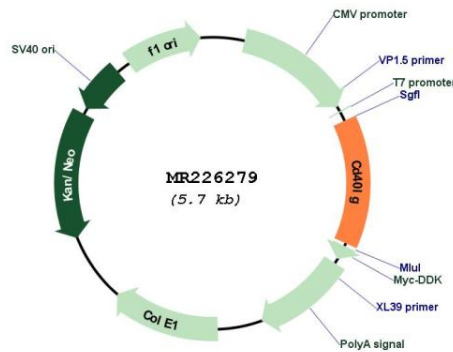
UniProt ID: [P27548](#)

Cytogenetics: X 31.21 cM

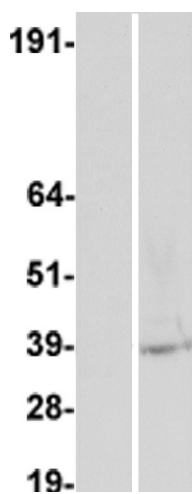
MW: 29.8 kDa

Gene Summary: Cytokine that binds to CD40/TNFRSF5. Costimulates T-cell proliferation and cytokine production. Its cross-linking on T-cells generates a costimulatory signal which enhances the production of IL4 and IL10 in conjunction with the TCR/CD3 ligation and CD28 costimulation. Induces the activation of NF-kappa-B and kinases MAPK8 and PAK2 in T-cells (By similarity). Mediates B-cell proliferation in the absence of co-stimulus as well as IgE production in the presence of IL4. Involved in immunoglobulin class switching (PubMed:1374165). [UniProtKB/Swiss-Prot Function]

Product images:



Circular map for MR226279



Western blot validation of overexpressed Cd40lg protein using anti-DDK antibody (Cat# [TA50011-100]). Left: Cell lysates from un-transfected HEK293T cells; Right: Cell lysates from HEK293T cells transfected with MR226279 using transfection reagent MegaTran 2.0 (Cat# [TT210002]).