

Product datasheet for **MR226249**

Ptpra (NM_008980) Mouse Tagged ORF Clone

Product data:

Product Type:	Expression Plasmids
Product Name:	Ptpra (NM_008980) Mouse Tagged ORF Clone
Tag:	Myc-DDK
Symbol:	Ptpra
Synonyms:	Ptpa; Ptpalpha; Rptalpha; Rptr; Rptralpha
Mammalian Cell Selection:	Neomycin
Vector:	pCMV6-Entry (PS100001)
E. coli Selection:	Kanamycin (25 ug/mL)



[View online »](#)

ORF Nucleotide
Sequence:

>MR226249 representing NM_008980
Red=Cloning site Blue=ORF Green=Tags(s)

TTTTGTAATACGACTCACTATAGGGCGGCCGGAATTCGTGACTGGATCCGGTACCGAGGAGATCTGCC
GCC**CGCATCGCC**

ATGGATTCCTGGTTCATTCTTGTCTGTTTGGCAGTGGTCTAATACATGTTAGTGCCAACAATGCTACTA
CAGTTTACCTTTCTTTAGGAACGACAAGATTAATTAACAACATCAACAACAGAATTGGCTAAGGAAGAGAA
TAAACCTCAAATTCAACCTCTTCAGTAATTTCTTTCTGTGGCACCAACATTCAGCCAAACCTGACT
CTGGAGCCACCTATGTGACTACTGTTAATTTTCCACTCTGACAATGGGACCAGGAGGGCAGCCAGCA
CGGAATCTGGAGGCACTACCATTTCCCGAACGGAAGCTGGCTTATTGAGAACCAGTTTACGGATGCCAT
AACAGAACCCTGGGAGGGGAACCTCCAGCACTGCAGCAACCCTCCAGAAACCTTCCCCCGGCAGATGAG
ACACCAATTATTGCGGTGATGGTGGCCCTGTCTCTCTGCTAGTAATCGTGTATTATCATAGTTCTGT
ACATGTTAAGGTTAAGAAATACAAGCAAGCTGGGAGTCAATCCAACCTTTCCGCTGTCAAATGGCCG
CACGGAGGATGTGGAGCCCAAAGTGTACCACTTCTGGCCAGGTCCTCAAGCACCAACAGGAAGTACCCA
CCACTGCCTGTGACAAGCTGGAAGAGGAGATTAAACGGAGAATGGCTGATGACAATAAGCTCTTCAGAG
AAGAATCAACGCTCTCCCTGCTTGTCTTATCCAGGCCACCTGTGAGGCTGCCTCCAAGGAAGAAAACAA
GGAAAAAACCGCTATGTAACATCCTGCCCTTTCTCTTTAGCTGTGAGCAAGGATGCAGTGAAGCA
CTGAACAAAACCACTCCATTGCTAGAAAGAAGGTTTATTGGGAAATCAAACCTCCAGAGGCTGTCTCTCAG
ATGACCACTCTAGAGTGCACCTGACACCTGTTGAAGGGTCCCAGATTCTGATTACATCAACGCTTCAAT
CATTAAATGGCTACCAGGAAAAGAACAATTCATCGCTGCACAAGGACCAAAAAGAAGAAACAGTGAATGAC
TTCTGGAGAATGATATGGGAACAAAACACAGCTACTATTGTATGGTGACCAACCTGAAGGAGAGAAAGG
AGTGTAAATGTGCCAATACTGGCCAGCAACAGGCTGCTGGACCTATGGGAATGTCCGTGTCTGTCTCGA
GGATGTGACTGTTCTGGTGGACTACACAGTACGGAAATTCGATCCAGCAGGTGGGCGACGTGACCAAC
AGGAAACCACAGCGCTCATCACTCAGTTCACCTTACCAGCTGGCCAGACTTTGGGGTGCCTTTACCC
CAATTGGCATGCTCAAGTTCCTCAAGAAGGTGAAGGCCTGTAACCCTCAGTACGCAGGGGCTATCGTGGT
CCACTGCAGTGCAGGTGTAGGGCGCACTGGCACCTTTGTTGTCATCGATGCCATGCTGGACATGATGAT
TCGGAACGCAAAGTGGATGTATACGGGTTTGTGAGCCGGATCCGGGCCAGCGCTGCCAGATGGTACAGA
CAGACATGCAGTACGTCTCATATACCAGGCCCTTCTGGAGCATTATCTGTATGGGGACACAGAAGTGA
AGTGAATCTCTAGAAACCCACCTACAAAAATTTATAACAAGATCCCAGGGACGAGCAACAACGGGTTA
GAGGAGGAGTTTAAAGAAATTAATTCAATCAAATCCAGAAATGACAAGATGCGCACGGGAAACCTTCCAG
CCAACATGAAGAAGAACCAGGTTTTACAGATCATTCCATATGAATTTAACAGAGTATCATTCCAGTCAA
ACGAGGGCAAGAGAACACAGACTATGTGAACGCATCCTTCATTGATGGATACCGGCAGAAAGACTCCTAC
ATTGCCAGCCAGGGCCCTTCTCCACACGATTGAGGACTTCTGGCGAATGATCTGGGAGTGAAGTCTCT
GTTCTATCGTAATGCTGACAGAAGTGAAGAGAGAGGCCAGGAGAAGTGTGCCAGTACTGGCCATCTGA
TGGCCTGGTGTCTATGGAGACATCACAGTTGAGCTGAAGAAGGAGGAGGAATGTGAAAGCTACACTGTC
CGAGACCTCCTGGTCACCAACACCAGGGAGAACAAGAGTCGGCAAATCCGGCAGTCCACTTCCACGGCT
GGCCTGAGGTGGCATCCCAGCGACGGCAAGGCATGATCAACATCATTGCAGCAGTGCAGAAGCAGCA
GCAGCAGTCGGGAACCATCCCATCACTGTGCACTGCAGTGCAGTGCAGGCGGACGAGCAAGCAACCTTCTGT
GCCTTGAGCACAGTCTGGAACGTGTGAAAGCAGAAGGAATTTTATAGTGTCTTCCAAACTGTCAAGAGCC
TGGCGCTGCAGAGGCCACACATGGTCCAGACACTGGAACAGTATGAATTCGCTACAAGGTGGTACAGGA
GTACATTGACGCTTTTTCAGATTATGCCAACTTCAAG

ACGCGTACGCGGCCGCTCGAGCAGAACTCATCTCAGAAGAGGATCTGGCAGCAATGATATCCTGGATT
ACAAGGATGACGACGATAAGGTTTAA

Protein Sequence: >MR226249 representing NM_008980
Red=Cloning site Green=Tags(s)

MDSWFI LVLFGSGLIHVSANNATTVSPSLGTTTRLIKTSTTELAKEENKTSNSTSSVISLSVAPTFSPNLT
LEPTYVTTVNSSHSDNGTRRAASTESGGTTISPNGSWLIENQFTDAITEPWEGNSSTAATTPETFPPEDE
TPIIAVMVALSLLLVIVFIIIVLYMLRFKYYKQAGSHSNFRLSNGRTEDVEPQSVPLLARSPSTNRKYP
PLPVDKLEEEINRRMADDNKLFREEFNALPACPIQATCEAASKEENKEKNRYVNILPFLSLAVSKDAVKA
LNKTTPLLERRFIGKSNSRGCLSDHRSVHLTPVEGVPDSYINASFINGYQEKNFIAAQGPKEETVND
FWRMIWEQNTATIVMVTNLKERKECKCAQYWPDQGCWYGNVRSVEDVTVLVDYTVRKFCIQQVGDVTN
RKPQRLITQFHFTSWPDFGVPFTPIGMLKFLKKVKACNPQYAGAIVVHCSAGVGRGTGFVVIDAMLDMMH
SERKVDVYGFVSRIRAQRQMVQTDMQYVFIYQALLEHYLYGDTELEVTSLETHLQKIYNKIPGTSNNGL
EEEFKCLTSIKIQNDKMRGTGNLPANMKKNRVLQIIPYEFNRV IIPVKRGEENTDYVNASFIDGYRQKDSY
IASQGPLLHTIEDFWRMIWEWKSCSIVMLTELEERGQEKCAQYWPSDGLVSYGDI TVELKKEEESYTV
RDLLVTNTRENKSRQIRQFHFHGWEVGI PSDGKGMINI IAAVQKQQQSGNHPI TVHCSAGAGRTGTFC
ALSTVLERVKAEGILDVFQTVKSLRLQRPBMVQTLEQYEFYKVVQEYIDAFSDYANFK

TRTRPLEQKLI SEEDLAANDILDYKDDDDKV

Chromatograms: https://cdn.origene.com/chromatograms/mm9003_g04.zip

Restriction Sites: Sgfl-Mlul

Cloning Scheme:



ACCN: NM_008980

ORF Size: 2487 bp

OTI Disclaimer: The molecular sequence of this clone aligns with the gene accession number as a point of reference only. However, individual transcript sequences of the same gene can differ through naturally occurring variations (e.g. polymorphisms), each with its own valid existence. This clone is substantially in agreement with the reference, but a complete review of all prevailing variants is recommended prior to use. [More info](#)

OTI Annotation: This clone was engineered to express the complete ORF with an expression tag. Expression varies depending on the nature of the gene.

Components: The ORF clone is ion-exchange column purified and shipped in a 2D barcoded Matrix tube containing 10ug of transfection-ready, dried plasmid DNA (reconstitute with 100 ul of water).

Reconstitution Method:

1. Centrifuge at 5,000xg for 5min.
2. Carefully open the tube and add 100ul of sterile water to dissolve the DNA.
3. Close the tube and incubate for 10 minutes at room temperature.
4. Briefly vortex the tube and then do a quick spin (less than 5000xg) to concentrate the liquid at the bottom.
5. Store the suspended plasmid at -20°C. The DNA is stable for at least one year from date of shipping when stored at -20°C.

RefSeq: [NM_008980.2](#), [NP_033006.2](#)

RefSeq Size: 3609 bp

RefSeq ORF: 2490 bp

Locus ID: 19262

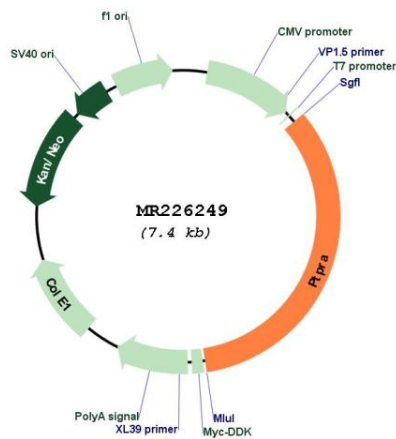
UniProt ID: [P18052](#)

Cytogenetics: 2 63.23 cM

MW: 94.1 kDa

Gene Summary: Tyrosine protein phosphatase which is involved in integrin-mediated focal adhesion formation (PubMed:22801373). Following integrin engagement, specifically recruits BCAR3, BCAR1 and CRK to focal adhesions thereby promoting SRC-mediated phosphorylation of BRAC1 and the subsequent activation of PAK and small GTPase RAC1 and CDC42 (PubMed:22801373).[UniProtKB/Swiss-Prot Function]

Product images:



Circular map for MR226249