

Product datasheet for **MR226196**

Apba1 (NM_177034) Mouse Tagged ORF Clone

Product data:

Product Type:	Expression Plasmids
Product Name:	Apba1 (NM_177034) Mouse Tagged ORF Clone
Tag:	Myc-DDK
Symbol:	Apba1
Synonyms:	6430513E09Rik; Lin-10; Mint; Mint1; Urop11; X11; X11alpha
Mammalian Cell Selection:	Neomycin
Vector:	pCMV6-Entry (PS100001)
E. coli Selection:	Kanamycin (25 ug/mL)



[View online »](#)

**ORF Nucleotide
Sequence:**

>MR226196 ORF sequence
 Red=Cloning site Blue=ORF Green=Tags(s)

TTTTGTAATACGACTCACTATAGGGCGGCCGGAATTCGTCGACTGGATCCGGTACCGAGGAGATCTGCC
 GCC**CGGATCGCC**

ATGAACCACTTGGAGGGCTCCGCGGAGGTGGAGGTGGCCGACGAGGCCAGGAGGGGAGGTGAACGAGT
 CCGTGGAGGCCGACCTGGAGCACCCGAGGTGGTGGAGGGACAGCAGCCGTCGCCATCGCCCCCGCCG
 CGCAGGTCACGAGCCGAGGACCACCGCGGCATCCCGCTCCGCCACCGCCGCCACCACCGAGGAGGAG
 GAGGAGGAAGAGCGCGCGAGTGCCTGGCGCGCTCGGCCAGCACCAGAGCGGCTTCCACAACCACACGG
 ACACGGCCGAGGGCGACGTGCTCGCGCGGCCGCGACGGCTACGAGGCGGAGCGCGCAGGACGCCGA
 CGATGAGAGCGCTACGCCGTGCAGTACCGGCCGAGGCCGAGGAGTACACGGAGCAGCGGAGGCGCGAG
 CACGCCGAGGCGCGCAGCGCGCGCTGCCAACCACCTGCACTTCCACTCGTGGAGCAGGAGAA
 CCATGAACGCCGCTACTCGGGTACGTCTACACGCCCGCTTCCACCGCGCCGAGGACGAGCCGTA
 CGCCGAGCCCTACGCCACTACGGCGGCTCCAGGAGCACGTGTACGAGGAGATCGGGGACGCGCCGAG
 CTGGAGGCGCGCAGCGCTGCGGCTCTACGAGCGCAGCGCAGGAGGCGCCGCTACCGCCAGGAGG
 CCCTGGGCGCGCGGCTGCACCACTACGACGAGCGCTCCGACGGCGAGTCCGACAGCCCGAGAAGGAGG
 GGAGTTCGCGCCCTACCGCGCATGGACAGTTATGAGCAGGAAGAGGACATCGACCAGATCGTGGCCGAG
 GTCAAGCAGAGCATGAGTTCGCAGAGCCTCGACAAGGCGGCCAAGACATGCCCGAGGCGGAGCAGGACC
 TGGAGCGTGCCCCGACTCCGGGAGGGGGACACCCGACAGTCCCGGGCTGCCAGCACCTGCCGGGACGA
 GCAGCGGTCTGGGAACCCCGGAGGCCAGCGAGGTTGGCAGCGGTACAGCAAGGAAAAGAGGGATGCC
 ATCTCGCTGGCCATCAAGGACATCAAGGAGGCCATTGAAGAAGTAAAACCAGGACCATCCGTTCCGCTT
 ACACCCCGCAGGCCCCAAAGAGCCCATCTGGGTATGCGCCAGGACATTAGCCCCACGAGGACGTGA
 CGACCAGAGGCCCGTGGACGGAGATTCTCGTCTCCTGGCAGTTCTCACCCCTGGGTGCTGAGTCATCA
 AGCATACCCCTTATCCCGCGACCCACGGAAGCCTCCACAAATAAAGAGTCAAGAAAAAGCTTGCTT
 CATTCCCAACCTACGTTGAAGTTCCTGGACCGTGCACCTGAAGACTTGATCGATGGAATTATTTTTGC
 TGCCAATTACCTTGTTCCACTCAGTACTCTCAGACAAAACCTCCCTCAAAAAATGTACGCATGATGACG
 GCCCAGGAAGCAGTAAGCCGGATCAAGACGGCCAGAAATAGCCAAAAGCAGGAAGAAGGCTCCTGAAG
 GCGAATCTCAGCAATGACTGAGGTGGACCTGTTATCTCTACCCAGAGGATCAAAGTACTGAATGCGGA
 TACACAGGAACCTATGATGGACCACCTCTGAGGACATTTCTACATCGCAGACATTGGCAACATCGTC
 TGCTGATGGCCCGCAGCGGATGCCCGTTCTAACTCCAGGAAAATGTGGAGGCTCTCACCCCTCCC
 AGGATGAAAAAGACAGTACAAGATGATCTGCCATGTCTTTGAGTCTGAGGACGCCCAGCTGATCGCGCA
 GTCCATAGGACAGGCATTCAGTGTTGCGTACCAGGAATTCCTCAGGGCCAATGGCATCAACCCAGAGAC
 CTCAGCCAGAAGGAATACAGTGACCTGCTCAACACCCAGGACATGTACAACGATGACCTGATCCACTTCT
 CCAAGTCGAAAACTGCAAAGATGTCTTCATAGAGAAGCAGAAAGGTGAGATCCTGGGAGTTGTGATTGT
 GGAGTCTGGTGGGATCCATTTGCCAACCGTATCATTGCCAACATGATGCACGGGGGCCCTGCAGAG
 AAGTCGGGAAGCTGAATATCGGGGACCAGATCATGTCCATCAACGGCACCAGCCTGGTGGGCTGCCTC
 TCTCTACCTGCCAGACATCATTAAAGGGCTTAAGAACCAGTCCCGAGTGAAGCTGAATATCGTGAGGTG
 CCCCCAGTGACCACAGTGCTAATAAGGAGGCCGACCTTCGCTACCAGCTGGGTTTCAGCGTACAGAA
 TGAATATCTGCAGCCTCATGAGAGGGGAATCGCTGAGAGAGGAGGCGTCCGCGTGGGACATCGGATCA
 TCGAAATCAATGGCCAGAGTGTCTGAGCCACACCACGAGAAGATCGTCCACATCCTCTCAATGCTGT
 TGGGAGATCCACATGAAGACAATGCCAGCAGCCATGTACCGACTGCTGACGGCCAGGAGCAGCCGTT
 TACATC

ACGCGTACGCGGCCGCTCGAGCAGAACTCATCTCAGAAGAGGATCTGGCAGCAATGATATCCTGGATT
 ACAAGGATGACGACGATAAGGTTTAA

Protein Sequence: >MR226196 protein sequence
 Red=Cloning site Green=Tags(s)

MNHLEGSAEVEVADEAPGGEVNESVEADLEHPEVVVEGQQPSPSPPPPAGHEPEDHRGHPAPPPPPPPQEE
 EEEERGECLARSASTESGFHNHTDTAEGDVLAAARDGYEAERAQDADDESAYAVQYRPEAEEYTEQAEAE
 HAEAAQRALPNHLHFHLSLEHEEAMNAAYSgyvYTHRLFHRAEDEPYAEPYADYGGLEQEHVYEEIGDAPE
 LEARDGLRLYERERDEAAAYRQEALGARLHHYDERSDGEDSDSPEKEAEFAPYPRMDSYEQEEDIDQIVAE
 VKQSMSSQSLDKAAEDMPEAEQDLERAPTPGGGHPDSPGLPAPAGQQQRVVGTPGGSEVGRYSKEKRDA
 ISLAIKDIKEAIEEVKTRTIRSPYTPDEPKEPIWVMRQDISPTRCDDQRPVGDGSPSPGSSSPLGAESS
 SIPLHPGDPEASTNKESRKSLSASFPTYVEVPGPCDPEDLIDGIIFAANYLGSTQLLSDKTPSKNVRMMQ
 AQEAVSRIKTAQKLAKSRKKAPEGESQPMTEVDLFIISTQRIKVLNADTQEPMDHPLRTISYIADIGNIV
 VLMARRRMPRSNSQENVEASHPSQDGKRQYKMICHVFESDAQLIAQSIGQAFSVAYQEFRLRANGINPED
 LSQKEYSDLLNTQDMYNDLIHFSKSENCKDVFIEKQKGEILGVVIVESGWSILPTVIIANMMHGGPAE
 KSGKLNIGDQIMSINGTSLVGLPLSTCQSIKGLKNQSRVKLNIVRCPPTTVLIRRPDLRYQLGFSVQN
 GIICSLMRGGIAERGGVRVGHRIEIEINGQSVVATPHEKIVHILSNAVGEIHMKTMPAAMYRLLTAQEQP
 YI

TRTRPLEQKLISEEDLAANDILDYKDDDDKV

Restriction Sites:

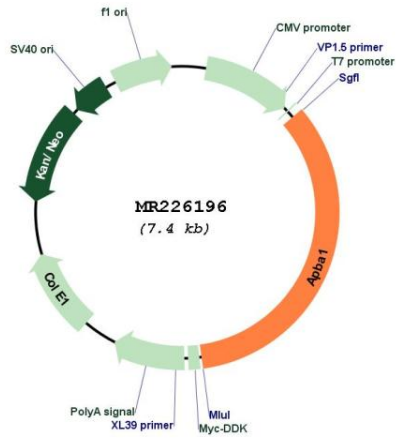
SgfI-MluI

Cloning Scheme:



ACCN:	NM_177034
ORF Size:	2529 bp
OTI Disclaimer:	The molecular sequence of this clone aligns with the gene accession number as a point of reference only. However, individual transcript sequences of the same gene can differ through naturally occurring variations (e.g. polymorphisms), each with its own valid existence. This clone is substantially in agreement with the reference, but a complete review of all prevailing variants is recommended prior to use. More info
OTI Annotation:	This clone was engineered to express the complete ORF with an expression tag. Expression varies depending on the nature of the gene.
Components:	The ORF clone is ion-exchange column purified and shipped in a 2D barcoded Matrix tube containing 10ug of transfection-ready, dried plasmid DNA (reconstitute with 100 ul of water).
Reconstitution Method:	<ol style="list-style-type: none">1. Centrifuge at 5,000xg for 5min.2. Carefully open the tube and add 100ul of sterile water to dissolve the DNA.3. Close the tube and incubate for 10 minutes at room temperature.4. Briefly vortex the tube and then do a quick spin (less than 5000xg) to concentrate the liquid at the bottom.5. Store the suspended plasmid at -20°C. The DNA is stable for at least one year from date of shipping when stored at -20°C.
RefSeq:	NM_177034.3 , NP_796008.2
RefSeq Size:	6649 bp
RefSeq ORF:	2529 bp
Locus ID:	319924
UniProt ID:	B2RUJ5
Cytogenetics:	19 B
MW:	92.9 kDa
Gene Summary:	Putative function in synaptic vesicle exocytosis by binding to Munc18-1, an essential component of the synaptic vesicle exocytotic machinery. May modulate processing of the amyloid-beta precursor protein (APP) and hence formation of AAP-beta (By similarity). [UniProtKB/Swiss-Prot Function]

Product images:



Circular map for MR226196