

Product datasheet for MR226164

Itgal (NM_008400) Mouse Tagged ORF Clone

Product data:

Product Type:	Expression Plasmids
Product Name:	Itgal (NM_008400) Mouse Tagged ORF Clone
Tag:	Myc-DDK
Symbol:	Itgal
Synonyms:	(p180); Cd11a; LFA-1; LFA-1A; Ly-15; Ly-21
Mammalian Cell Selection:	Neomycin
Vector:	pCMV6-Entry (PS100001)
E. coli Selection:	Kanamycin (25 ug/mL)
ORF Nucleotide Sequence:	>MR226164 ORF sequence Red=Cloning site Blue=ORF Green=Tags(s)

TTTTGTAATACGACTCACTATAGGGCGGCCGGAATTCGTCGACTGGATCCGGTACCGAGGAGATCTGCC
GCC**CGATCGCC**

ATGAGTTTCCGGATTGCGGGCCCCAGACTTTTGCTACTGGGACTCCAGCTGTTTGCCAAGGCCTGGAGCT
ACAACCTGGACACACGGCTACGCAGAGCTTCTGGCACAAGCTGGAAGACATTTTGGGTACCAGGTCTT
GCAGATTGAAGATGGGGTTGCTGGGAGCCCCAGGTGAGGGGGACAACACGGGAGGCCTCTACTCTGC
CGAACAAGCAGCGAGTTCTGCCAGCCAGTCAGCCTACATGTTCTAACCATACCTCAAGTACTTGGGAA
TGACGCTGGCAACAGATGCCGCCAAGGGAAGCCTTTTGGCCTGTGACCCTGGACTGTCTCGGACATGCGA
TCAGAACACTTACCTCAGTGGCCTCTGCTACCTCTTCCCCAGAGTCTGGAGGGACCTATGTTACAAAAT
CGTCCCGCCTATCAGGAATGTATGAAGGGCAAAGTCGACCTGGTGTCTTCTGTTTCGATGGCTCACAGAGCT
TGGATAGAAAGGACTTTGAAAAATCCTGGAAATCATGAAGGATGTGATGAGGAAGCTCAGCAATACTTC
CTACCAGTTTGTCTGCCGTCCAGTTCTCCACAGACTGCAGAACAGAATTTACTTTCTTGGACTACGTTAAG
CAGAACAAGAACCCCGATGTTCTGCTAGGCAGCGTGCAGCCCATGTTCTTGTGACCAATACCTTTCGTG
CCATCAACTATGTGGTGGCACACGTGTTCAAAGAAGAGTCTGGTGCCAGGCCGGATGCTACCAAGGTGCT
TGTCATCATTACAGACGGGGAGGCAAGTGATAAAGGCAACATCAGTCCGGCCACGACATAACCCGCTAC
ATCATCGGGATTGGCAAGCATTTTGTGAGCGTACAAAAGCAAAAAGACGCTCCACATATTTGCCTCAGAAC
CTGTAGAGGAATTTGTGAAGATTCTGGACACCTTTGAGAAGCTGAAGGATCTTTTTACTGACCTGCAGAG
GAGGATTTATGCTATTGAGGGCACAACAGACAGGACCTGACATCCTTTAACATGGAACCTCTCCTCCAGC
GGGATCAGCGCAGACCTCAGCAAGGGCCATGCAGTTGTGGGAGCTGTTGGGGCTAAGGATTGGGCCGGG
GCTTTCTGGACCTGCGTGAAGACCTGCAGGGTGCACATTTGTTGGCAGGAACCGCTGACCTCAGATGT
GAGAGGGGGTACCTGGTTACTGTGGCCTGGATGACCTCCCGGAGCTCCAGACCCCTGCTGGCAGCA
GGAGCCCCACGGTACCAGCATGTGGACAAGTACTGCTTTTCCAAGCCCCAGAGGCTGGAGGACGTTGGA
ACCAAACCCAGAAGATAGAAGGGACTCAGATCGGATCTTACTTTGGTGGGAACTATGTAGTGTTGACCT
GGACCAAGATGGCGAGGCAGAGCTGCTGCTGATTGGAGCACCCCTGTTCTTTGGGGAGCAGAGAGGAGGC



[View online »](#)

CGAGTGTTCACCTACCAGAGAAGACAGTCGCTGTTTAAAATGGTCTCAGAGCTACAGGGTGACCCTGGCT
ACCCGCTTGGTCGGTTTTGGAGCCGCCATAACTGCCCTGACGGACATCAATGGGGATAGGCTGACTGATGT
GGCTGTGGGAGCCCTTTGGAGGAGCAGGGTGTGTGTACATCTTCAATGGGAAGCCTGGTGGGCTCAGT
CCCCAGCAAGCCAGCGTATAACAAGGAGCCAGGTGTTCCAGGAATCCGGTGGTTTTGGCCGCTCCATCC
ATGGGGTGAAGGACCTTGGAGGGGACAGGCTGGCAGATGTGGTTGTAGGAGCTGAGGGTCGGGTGGTTGT
GCTGAGCTCCAGCCGGTGGTGGATGTGGTCACTGAGCTGTCGTTCTCCCAGAGGAAATCCCAGTGCAC
GAGGTGGAGTGCCTCTACTCAGCCAGGGAGGAGCAGAAACACGGAGTCAAGCTCAAGGCATGCTTCCGGA
TCAAGCCCTCACGCCACAGTTTCAAGGTCGCCTGCTTGCCAACCTCAGCTACACCCTGCAGCTGGATGG
CCATCGGATGAGGAGCCAGGGTTGTTCCAGATGGAAGCCACGAGCTCAGTGGAACACCTCCATCACC
CCAGATAAATCCTGCTTGGACTTCCACTTCCACTTCCCGATCTGCATTCAAGACCTCATCTCCCCTATCA
ATGTCTCCCTGAATTTCTCTTTTTGGAGGAAGAAGGAACACCAAGGGACAAAAGGTGGCAGGGCCAT
GCAGCCTATCCTGAGACCTTCAATCCACACAGTACTAAGGAGATCCCTTTTGAAGAAGTGTGGTGA
GATAAGAAGTGTGAGGCAAACCTGACCCTGTATCCCCTGCCAGATCTGGACCCCTGCGTCTGATGTCT
CTGCCAGCCTTGCTGTGGAGTGGACACTGAGCAACTCAGGGGAAGATGCCTACTGGGTGCGATTAGACCT
GGACTTCCCTCGGGGACTCTCCTCCGAAAGTGGAGATGCTTCCAGCCACACAGCCGAATGCCTGTGAGC
TGCAGGAGCTCACCCAGGGTCAAGTCTCCTGACTAAGACACTGAAATGCAATGTAAGCTCTCCATCT
TCAAAGCAGGCCAGGAGGTGAGCCTCCAGGTGATGTTAACACGCTACTCAACAGCTCCTGGGAAGACT
CGTCGAGCTGAATGGCACTGTGCACTGTGAGAATGAGAATCAAGCCTCCAGGAGGACAACCTCAGCCGCC
ACCCACATTCTGTCTGTACCTGTCAACATCCTTACTAAGGAGCAGGAGAACTCCACCCTCTATATCA
GTTTCACCCCTAAAGGTCCCAAGACCAACAAGTCCAGCATGTCTACCAGGTGAGGATTCAGCCATCTGC
CTATGACCACAACATGCCCACTAGAGGCCTTGGTTGGGGTCCCCGGCCTCACAGTGAGGACCTCATC
ACATACACATGGAGTGTACAGACGGATCCCCTTGTCACTTGCCACAGCGAGGACCTGAAGAGGCCGTCCA
GCGAAGCTGAGCAGCCTTGTCTGCCTGGAGTCCAGTCCGCTGTCCAATTGTCTTCAGGCGGGAGATCCT
CATCCAAGTGACGGGGACCGTGGAACTCTCCAAGGAAATCAAGGCCTCCTCCACACTCAGCCTCTGCAGC
TCACTCTCCGTCTCCTTCAACAGCAGCAAGCATTTCCATTTGTATGGCAGCAAAGCCTCTGAGGCCAGG
TCCTCGTGAAGGTTGACCTGATCCACGAGAAGGAGATGCTTACGTGTACGTGCTCAGCGGCATTGGGGG
CCTCGTCTTCTGTTCTGATTTTCTGGCGCTCTACAAGGTTGGCTTCTTCAAACGGAACCTGAAGGAG
AAGATGGAGGCTGATGGAGGTGTTCCAATGGAAGCCCTCCAGAAGACTGACCCTCTGGCAGTACCTG
GGGAAGAGACCAAGATATGGGCTGTCTAGAGCCCTCCGGGAGAGTGACAAGGAC

ACGCGTACGCGGCCGCTCGAGCAGAACTCATCTCAGAAGAGGATCTGGCAGCAAATGATATCCTGGATT
ACAAGGATGACGACGATAAGGTTTAA

Protein Sequence: >MR226164 protein sequence
Red=Cloning site Green=Tags(s)

```

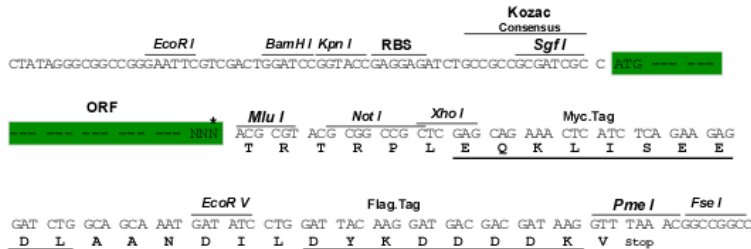
MSFRIAGPRLLLGLQLFAKAWSYNLDTRPTQSFLAQAGRHFQYQLQIEDGVVVGAPGEGDNTGGLYHC
RTSSEFCQPVSLHGSNHTSKYLGMTLATDAAKGSLACDPGLSRTCDQNTYLSGLCYLFPQSLEGPMLQN
RPAYQECMKGKVDLVFLFDGSQSLDRKDFEKILEFMKDVMRKLSNTSYQFAAVQFSTDCRTEFTFLDYVK
QNKNPVLLGSVQPMFLLTNTFRAINYVVAHVFKKEESGARPDATKVLVVIITDGEASDKGNISAAHDITRY
IIGIGKHFVSVQKQTLHIFASEPVVEFVKILDTFEKLKDLFTDLQRRYIAIEGTNRQDLTSFNMELSSS
GISADLSKGHAVVGVGAKDWAGGFLDLREDLQGATFVGQEPLTSDVRGGYLGYTVAWMTRSRRPLLAA
GAPRYQHVGVLLFQAPEAGGRWNQTQKIEGTQIGSYFGGELCSVDLDQDGEALLLIGAPLFFGEQRGG
RVFTYQRRQSLFEMVSELQGDGPGYPLGRFGAAITALT DINGDRLTDVAVGAPLEEQAVYIFNGKPGGLS
PQPSQRIQGAQVFPGIRWFGRSIHGVKDLGGDRLADVVGAEGRVVVLSRPVVDVVTLSFSPEEIPVH
EVECSYSAREEQKHGVKLCACFRKPLTPQFQGRLLANLSYTLQLDGHMRMRGLFPDGSHELSGNTSIT
PDKSCLDFHFHFPICIQDLISPINVSLNFSLEEEGTPRDQKVGRAMQPILRPSIHTVTKEIPFEKNCGE
DKKCEANLTLSSPARSGPLRLMSSASLAVEWTLNSGDAYWVRLDLDFPRGLSFRKVEMLQPHSRMPVS
CEELTEGSSLLTKLTKCNVSSPIFKAGQEVSLQVMFNTLLNSSWEDFVELNGTVHCENENSSLQEDNSAA
THIPVL YPVNILTKEQENSTLYISFTPKGPKTQQVQHVYQVRIQPSAYDHNMP TLEALVGVP RPHSEDLI
TYTWSVQTDPLV TCHSEDLKRPSSAEQPCLPGVQFRCPVFRREILIQVTGTVELSKEIKASSTLSLCS
SLSVSFNSSKHFHLYGSKASEAQLVKVDL IHEKEMLVVYVLSGIGGLVLLFLIFLALYKGVFFKRNLKE
KMEADGGVPNGSPPEDTDPLAVPGEETKDMGCLEPLRESDKD
    
```

TRTRPLEQKLISEEDLAANDILDYKDDDDKV

Restriction Sites:
Cloning Scheme:

Sgfl-MluI

Cloning sites used for ORF Shuttling:



* The last codon before the Stop codon of the ORF

ACCN: NM_008400

ORF Size: 3489 bp

OTI Disclaimer: Due to the inherent nature of this plasmid, standard methods to replicate additional amounts of DNA in E. coli are highly likely to result in mutations and/or rearrangements. Therefore, OriGene does not guarantee the capability to replicate this plasmid DNA. Additional amounts of DNA can be purchased from OriGene with batch-specific, full-sequence verification at a reduced cost. Please contact our customer care team at custsupport@origene.com or by calling 301.340.3188 option 3 for pricing and delivery.

The molecular sequence of this clone aligns with the gene accession number as a point of reference only. However, individual transcript sequences of the same gene can differ through naturally occurring variations (e.g. polymorphisms), each with its own valid existence. This clone is substantially in agreement with the reference, but a complete review of all prevailing variants is recommended prior to use. [More info](#)

OTI Annotation: This clone was engineered to express the complete ORF with an expression tag. Expression varies depending on the nature of the gene.

Components: The ORF clone is ion-exchange column purified and shipped in a 2D barcoded Matrix tube containing 10ug of transfection-ready, dried plasmid DNA (reconstitute with 100 ul of water).

Reconstitution Method:

1. Centrifuge at 5,000xg for 5min.
2. Carefully open the tube and add 100ul of sterile water to dissolve the DNA.
3. Close the tube and incubate for 10 minutes at room temperature.
4. Briefly vortex the tube and then do a quick spin (less than 5000xg) to concentrate the liquid at the bottom.
5. Store the suspended plasmid at -20°C. The DNA is stable for at least one year from date of shipping when stored at -20°C.

RefSeq: [NM_008400.2](#), [NM_008400.3](#), [NP_032426.2](#)

RefSeq Size: 5219 bp

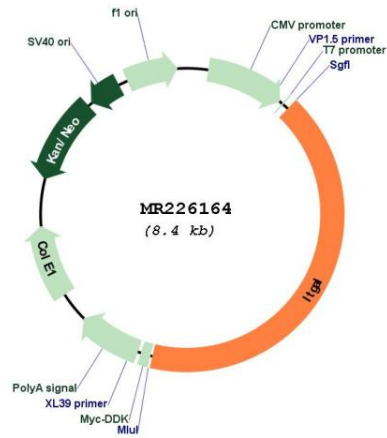
RefSeq ORF: 3483 bp

Locus ID: 16408

Cytogenetics: 7 69.44 cM

MW: 128.3 kDa

Product images:



Circular map for MR226164