

## Product datasheet for **MR226154**

### Scn4b (NM\_001013390) Mouse Tagged ORF Clone

#### Product data:

**Product Type:** Expression Plasmids  
**Product Name:** Scn4b (NM\_001013390) Mouse Tagged ORF Clone  
**Tag:** Myc-DDK  
**Symbol:** Scn4b  
**Synonyms:** Gm1471  
**Mammalian Cell Selection:** Neomycin  
**Vector:** pCMV6-Entry (PS100001)  
**E. coli Selection:** Kanamycin (25 ug/mL)  
**ORF Nucleotide Sequence:** >MR226154 representing NM\_001013390  
Red=Cloning site Blue=ORF Green=Tags(s)

TTTTGTAATACGACTCACTATAGGGCGCCGGGAATTCGTCGACTGGATCCGGTACCGAGGAGATCTGCC  
GCC**CGATCGCC**

ATGTCCCGGGCTGGGAACCGAGGCAATACTCAGGCGAGATGGCTGGGCACTGGGCTTTGGGTCTCTTCC  
TGCTTCCCATGTACCTGTCGTTGGAGGTATCTGTGGAAAGGCCACCACCATCTACGCTATTAACGGCTC  
ATCGATCCTGCTGCCCTGCACCTTCTCCAGCTGTTATGGCTTTGAGAACCTCTACTTCAAGTGGTCTAC  
AATAACAGCGAAACATCCAGGATTCTCATCGACGGGATCGTGAAGAACGATAAGTCTGACCCTAAGGTGA  
GAGTGAAGGATGATGATCGAATCACCTAGAGGGCTCCACCAAGGAGAAGACGAATAACATCTCCATCCT  
CTTGAGTGACCTGGAGTTCAGTGACACGGGAGATACACCTGCTTCGTGAGGAACCCCAAGGAGAAGGAC  
TTGAACAACCTCTGCCACCATCTTCTCCAAGTGGTTGATAAATTGGAAAAAGTGGACAACACGGTGACTC  
TCATCATCCTGGCTGTGGTGGGCGGGTCAATTGGACTTCTGTTTGCATCCTTCTGCTGAAGAAGTCTCAT  
CACCTTCATCCTGAAGAAGACCCGAGAGAAGAAGAAGGAGTGTCTCGTGAGTTTCTCTGGGAATGACAAC  
ACAGAGAACGGTTGCCTGGCTCCAAGGCAGAAGAGAAGCCACCCACAAAAGTG

**ACGCGT**ACGCGGGCCGCTCGAGCAGAACTCATCTCAGAAGAGGATCTGGCAGCAATGATATCCTGGATT  
ACAAGGATGACGACGATAAGGTTTAA



[View online »](#)

**Protein Sequence:** >MR226154 representing NM\_001013390  
Red=Cloning site Green=Tags(s)

MSRAGNRGNTQARWLGTLLGLFLLPMYLSLEVSVGKATTIYAINGSSILLPCTFSSCYGFENLYFKWSY  
 NNSETSRILIDGIVKNDKSDPKVRVKDDDRITLEGSTKEKTNNISILLSDFESDTGRYTCFVRNPKEK  
 LNNSATIFLQVVDKLEKVDNTVTLIILAVVGGVIGLLVCILLKKLITFILKKTREKKKECLVSSSGNDN  
 TENGLPGSKAEKPPPTKV

TRTRPLEQKLISEEDLAANDILDYKDDDDKV

**Chromatograms:** [https://cdn.origene.com/chromatograms/mm9024\\_g10.zip](https://cdn.origene.com/chromatograms/mm9024_g10.zip)

**Restriction Sites:** SgfI-MluI

**Cloning Scheme:**



**ACCN:** NM\_001013390

**ORF Size:** 684 bp

**OTI Disclaimer:** The molecular sequence of this clone aligns with the gene accession number as a point of reference only. However, individual transcript sequences of the same gene can differ through naturally occurring variations (e.g. polymorphisms), each with its own valid existence. This clone is substantially in agreement with the reference, but a complete review of all prevailing variants is recommended prior to use. [More info](#)

**OTI Annotation:** This clone was engineered to express the complete ORF with an expression tag. Expression varies depending on the nature of the gene.

**Components:** The ORF clone is ion-exchange column purified and shipped in a 2D barcoded Matrix tube containing 10ug of transfection-ready, dried plasmid DNA (reconstitute with 100 ul of water).

**Reconstitution Method:**

1. Centrifuge at 5,000xg for 5min.
2. Carefully open the tube and add 100ul of sterile water to dissolve the DNA.
3. Close the tube and incubate for 10 minutes at room temperature.
4. Briefly vortex the tube and then do a quick spin (less than 5000xg) to concentrate the liquid at the bottom.
5. Store the suspended plasmid at -20°C. The DNA is stable for at least one year from date of shipping when stored at -20°C.

**RefSeq:** [NM\\_001013390.3](#)

**RefSeq Size:** 4244 bp

**RefSeq ORF:** 687 bp

**Locus ID:** 399548

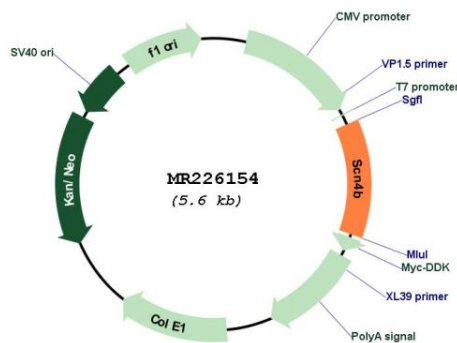
**UniProt ID:** [Q7M729](#)

**Cytogenetics:** 9 A5.2

**MW:** 25.6 kDa

**Gene Summary:** Modulates channel gating kinetics. Causes negative shifts in the voltage dependence of activation of certain alpha sodium channels, but does not affect the voltage dependence of inactivation. Modulates the susceptibility of the sodium channel to inhibition by toxic peptides from spider, scorpion, wasp and sea anemone venom (By similarity).[UniProtKB/Swiss-Prot Function]

**Product images:**



Circular map for MR226154