

Product datasheet for **MR226151**

Epha2 (NM_010139) Mouse Tagged ORF Clone

Product data:

| | |
|---------------------------|------------------------------------------|
| Product Type: | Expression Plasmids |
| Product Name: | Epha2 (NM_010139) Mouse Tagged ORF Clone |
| Tag: | Myc-DDK |
| Symbol: | Epha2 |
| Synonyms: | AW545284; Eck; Myk2; Sek-2; Sek2 |
| Mammalian Cell Selection: | Neomycin |
| Vector: | pCMV6-Entry (PS100001) |
| E. coli Selection: | Kanamycin (25 ug/mL) |



[View online »](#)

ORF Nucleotide Sequence:

>MR226151 representing NM_010139
 Red=Cloning site Blue=ORF Green=Tags(s)

TTTTGTAATACGACTCACTATAGGGCGGCCGGGAATTCGTCGACTGGATCCGGTACCGAGGAGATCTGCC
 GCC**CGGATCGCC**

ATGGAGCTCCGGCAGTCGGTTTCTGCCTGGCGTGTGTGGGTTGCGCGCTGGCGGCCGGCGGCAC
 AGGAAAAGGAAGTTGTTTGTGGACTTCGCAGCAATGAAGGGAGAGCTCGGCTGGCTCACGCACCCTA
 TGGCAAAGGGTGGGACCTGATGCAAGCATCATGGACGACATGCCTATCTACATGTACTCGGTGTCAAC
 GTGGTATCCGGCGACCAGGACAACCTGGCTCCGCACCAACTGGGTGTACCGGGAGGAGGCCGAGCGCATCT
 TTATTGAGCTCAAGTTCACGGTGCAGACTGTAACAGCTTCCCGGTGGCGCCAGCTCATGCAAAGAGAC
 CTTCAACCTCTACTATGCAGAGTCAGATGTGGACTATGGACCAACTCCAGAAGCGCCAGTTACCAAG
 ATTGACACCATCGCCCTGACGAGATCACGGTCAGCAGTACTTCGAGGCTCGCAATGTCAAGTGAACG
 TAGAGGAGCGCATGGTGGGGCCCTTACCCGGAAGGGCTTCTACCTGGCCTTCCAGGACATCGGCGCCTG
 CGTGGCGTGTCTCCGTTCCGCTCTACTACAAGAAGTGTCCCGAGATGTGCAGAGCTTGCTCGCTTC
 CCCGAGACCATTGCTGTGCTGTCTCCGATACACAACCCCTGGCCACGGTGGCCGGTACCTGCGTGGACC
 ATGCCGTGGTGCCTTATGGGGGGCAGGGGCTCTCATGCACTGCACGGTGGATGGCGAGTGGCTGGTGC
 CATCGGGCAGTGCCTGTGCCAGGAAGGCTACGAGAAGGTCGAGGATGCCTGCCGAGCCTGTTCTCCAGGA
 TTCTTCAAGTCTGAGGCATCTGAGAGCCCTTGCCTGGAGTGTCCAGAGCATACCCCTGCCATCCACAGAGG
 GTGCCACCTCCTGCCAGTGTGAAGAAGGCTATTTACGGGCACCTGAGGACCCACTGTCCATGTCTTGAC
 ACGTCCACCCTCGCCCCAACTACCTCACGGCCATTGGCATGGGTGCCAAAGTGAAGTGCCTTGGACA
 GCTCCCAAGGACACTGGTGGCCGCCAGGACATTGTCTACAGTGTCACTTGCGAACAGTGTGGCCAGAGT
 CTGGCGAGTGTGGCCCTGTGAGGCGAGCGTGCCTATTACAGACTCCTCACGCCCTGACCCGACGAG
 TGTGACAGTCAGTGACCTGGAGCCACATGAACTATACCTTCGCTGTGCAAGCACGCAATGGTGTCTCA
 GGCTGGTACTAGCCGAAGCTTCCGGACTGCCAGCGTCAAGTATAACCAAAACAGAGCCCCCAAAGTGA
 GGCTGGAGGACCGAAGCACCACCTCCCTGAGTGTACCTGGAGCATCCCGGTGTACAGCAGAGCCGTGT
 GTGGAAGTACGAAGTACCTACCGAAGAAGGGGGATGCCAACAGCTATAATGTGCGCCGACGGAAGGC
 TTCTCCGTGACCCTGGATGACCTTGCTCCGATACACGTACCTGGTGCAGGTGCAGGCGTGCAGCAGG
 AGGGCCAGGGAGCCGGCAGCAAAGTGCACGAGTCCAGACACTGTCCACGGAAGGATCTGCCAACATGGC
 GGTGATCGGCGGTGGTGTAGGTGTTGTTTGGCTTCTGGTACTGGCAGGAGTTGGCTCTTCATCCAT
 CGAAGGAGGAGAACCTCGGGCTCGCCAGTCTCTGAGGATGTCGGTTTTTCCAAGTCAAGAACTAA
 AGCCCCTGAAGACCTATGTGGATCCTCACACTTACGAAGACCCCAACCAGGCTGTACTCAAGTTTACCAC
 CGAGATCCACCCATCCTGTGTGGCAAGGCAAGGTCATTGGAGCAGGAGAGTTTGGAGAGGTCTATAAA
 GGGACGCTGAAGGCATCCTCGGGGAAGAAGGAGATACCGGTGGCCATCAAGACACTGAAAGCGGGTACA
 CTGAGAAGCAGCGGGTGGACTTCTGAGCGAGGCCAGCATCATGGGCCAGTTTAGCCACCACAATATCAT
 CCGCTGGAGGGCGTGGTCTCTAAATACAAACCCATGATGATTATCACAGAGTACATGGAGAATGGAGCG
 CTAGACAAGTTCCTTAGGGAGAAGGATGGTGTGAGTTCAGTGTACTTCAGTTGGTGGCATGCTGAGGGGA
 TCGCATCCGGCATGAAGTACCTGGCCAACATGAACTACGTGCACCGGGACCTGGCCGCCGCAACATCCT
 CGTCAACAGCAACCTGGTGTGCAAGGTGTCGATTTTGGCCTGTGCGGTGTGCTGGAAGATGACCCCGAG
 GCCACCTACACCACAAGTGGCGGCAAGATCCCTATTCGATGGACAGCCCCAGAGGCCATTTCCTACC
 AGTTACCTCAGCCAGCGATGTGTGGAGTACGGCATTGTGATGTGGAAAGTGTGACTTATGGCGAACG
 GCCCTACTGGGAAGTGTCAAACACGAGGTGATGAAAGCCATCAACGACGGCTTCCGGCTCCCTACGCC
 ATGGACTGCCCTTACGCCATTTACCAGCTCATGATGCAGTGTGGCAGCAAGAGCGCTCCCGCCGCCCA
 AGTTTGGCGACATCGTTAGCATCCTGGACAAGCTCATCCGAGCCCCGACTCCCTCAAGACGCTGGCTGA
 CTTTGTATCCCGAGTGTCCATCCGGTGGCCAGCACCAGCGGCTCGGAGGGAGTCCCTTCCGTACGGTG
 TCCGAGTGGCTGGAGAGCATCAAGATGCAACAGTACACGGAACACTTCATGGTGGCTGGTACACGGCCA
 TCGAGAAGGTGGTACAGATGTCCAACGAAGACATCAAAGGATCGGAGTGCCTTCTCGCCACCAGAA
 GCGTATTGCCTACAGCCTGCTGGACTCAAGGACCAGGTCAACACAGTGGGGATTCTATC

ACGCGTACGCGGCCGCTCGAGCAGAAACTCATCTCAGAAGAGGATCTGGCAGCAAATGATATCCTGGATT
 ACAAGGATGACGACGATAAGGTTTAA

Protein Sequence: >MR226151 representing NM_010139
Red=Cloning site Green=Tags(s)

```
MELRAVGFCLALLWGCALAAAAAQKEVLLDFAAMKGEGLWLTHPYKGWDLMQNIMDDMPIYMYSVCN
VVSQDQDNWLRNWNVYREEAERIFIELKFTVRDCNSFPGGASSCKETFNLYAESDQVYGTNFQKRQFTK
IDTIAPDEITVSSDFEARNVKLNVEERMVGPLTRKGFYLAQDIDGACVALLSVRVYKKCPPEMLQSLARF
PETIAVAVSDTQPLATVAGTCVDHAVVPYGGEGPLMHCTVDGEWLVIQQLCQEGYEKVEDACRACSPG
FFKSEASESPCLEPEHTLPSTEGATSCQCEEGYFRAPEDPLSMCTRPPSAPNYLTAIGMGAKVELRWT
APKDTGGRQDIVYSVTCEQCWPESGECGPCEASVRYSEPPHALTRTSVTVSDLEPHMNYTFAVEARNGVS
GLVTSRSFRTASVSINQTEPPKVRLEDRSTTSLSVTWSIPVSQQSRVWYEVYRKKGDANSYNVRRTEG
FSVTLDDLAPDTTYLVQVQALTQEGQGAGSKVHEFQTLSTEGSANMAVIGGVAVGVVLLVLAVGLFIH
RRRRNLRARQSSDVRFSKSEQLKPLKTYVDPHTYEDPNQAVLKFTTEIHPSCVARQKVI GAGEFGEVYK
GTLKASSGKKEIPVAIKTLKAGYTEKQRVDFLSEASIMGQFSHHNIIRLEGVVS KYKPMMIITEYMENGA
LDKFLREKDGESVLQLVGLRGIASGMKYLNMNYVHRDLAARNILVNSNLVCKVSDFGLSRVLEDDPE
ATYTTSGGKIPIRWTAPEAISYRKFTSASDVWSYGI VMWEVMTYGERPYWELSNHEVMKAIN DGFRLPTP
MDCPSAIYQLMMQCWQQRSRPKFADIVSILDKLI RAPDSLKTLADFPDPRVSIRLPSTSGSEGVFRTY
SEWLESIKMQQYTEHFMVAGYTAIEKVVQMSNEDIKRIGVRLPGHQKRIAYSLGLKDQVNTVGIPI
```

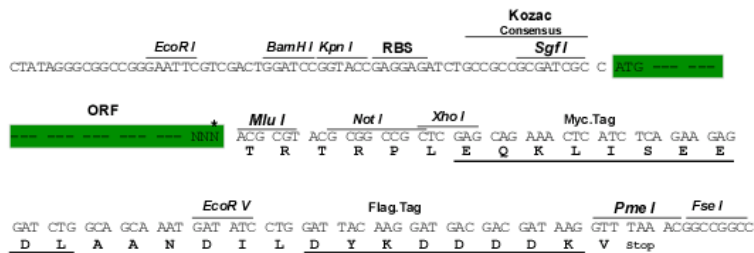
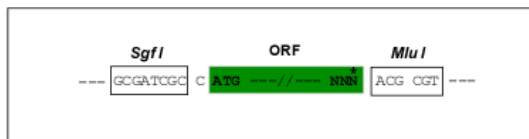
TRTRPLEQKLISEEDLAANDILDYKDDDDKV

Chromatograms: https://cdn.origene.com/chromatograms/mm9009_c12.zip

Restriction Sites: SgfI-MluI

Cloning Scheme:

Cloning sites used for ORF Shuttling:



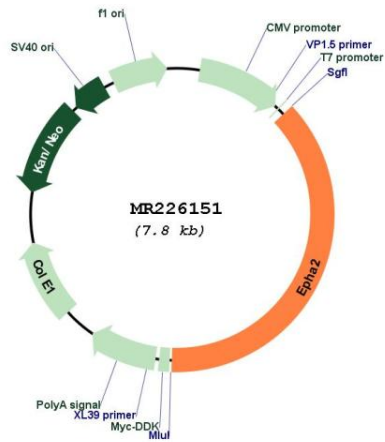
* The last codon before the Stop codon of the ORF

ACCN: NM_010139

ORF Size: 2931 bp

| | |
|-------------------------------|------------------------------------------------------------------------------------------------------------------------------------------------------------------------------------------------------------------------------------------------------------------------------------------------------------------------------------------------------------------------------------------------------------------------------------------------------------------------------------------------------------------------------------------------------------------------------------------------------------------------------------------------------------------------------------------------------------------------------------------------------------------------------------------------------------------------------------------------------------------------------------------------------------------------------------------------------------------------------------------------------------------------------------------------------------------------------------------------------------------------------------------------------------------------------------------------------------------------------------------------------------------------------------------------------------------------------------------------------------------------------------------------------------------------------------------------|
| OTI Disclaimer: | The molecular sequence of this clone aligns with the gene accession number as a point of reference only. However, individual transcript sequences of the same gene can differ through naturally occurring variations (e.g. polymorphisms), each with its own valid existence. This clone is substantially in agreement with the reference, but a complete review of all prevailing variants is recommended prior to use. More info |
| OTI Annotation: | This clone was engineered to express the complete ORF with an expression tag. Expression varies depending on the nature of the gene. |
| Components: | The ORF clone is ion-exchange column purified and shipped in a 2D barcoded Matrix tube containing 10ug of transfection-ready, dried plasmid DNA (reconstitute with 100 ul of water). |
| Reconstitution Method: | <ol style="list-style-type: none">1. Centrifuge at 5,000xg for 5min.2. Carefully open the tube and add 100ul of sterile water to dissolve the DNA.3. Close the tube and incubate for 10 minutes at room temperature.4. Briefly vortex the tube and then do a quick spin (less than 5000xg) to concentrate the liquid at the bottom.5. Store the suspended plasmid at -20°C. The DNA is stable for at least one year from date of shipping when stored at -20°C. |
| RefSeq: | NM_010139.3 , NP_034269.2 |
| RefSeq Size: | 3948 bp |
| RefSeq ORF: | 2934 bp |
| Locus ID: | 13836 |
| UniProt ID: | Q03145 |
| Cytogenetics: | 4 73.67 cM |
| MW: | 109.3 kDa |
| Gene Summary: | Receptor tyrosine kinase which binds promiscuously membrane-bound ephrin-A family ligands residing on adjacent cells, leading to contact-dependent bidirectional signaling into neighboring cells. The signaling pathway downstream of the receptor is referred to as forward signaling while the signaling pathway downstream of the ephrin ligand is referred to as reverse signaling. Activated by the ligand ephrin-A1/EFNA1 regulates migration, integrin-mediated adhesion, proliferation and differentiation of cells (PubMed:29749928). Regulates cell adhesion and differentiation through DSG1/desmoglein-1 and inhibition of the ERK1/ERK2 signaling pathway. May also participate in UV radiation-induced apoptosis and have a ligand-independent stimulatory effect on chemotactic cell migration. During development, may function in distinctive aspects of pattern formation and subsequently in development of several fetal tissues. Involved for instance in angiogenesis, in early hindbrain development and epithelial proliferation and branching morphogenesis during mammary gland development. Engaged by the ligand ephrin-A5/EFNA5 may regulate lens fiber cells shape and interactions and be important for lens transparency development and maintenance. With ephrin-A2/EFNA2 may play a role in bone remodeling through regulation of osteoclastogenesis and osteoblastogenesis.[UniProtKB/Swiss-Prot Function] |

Product images:



Circular map for MR226151