

Product datasheet for MR226143L3

Cpa3 (NM_007753) Mouse Tagged Lenti ORF Clone

Product data:

Product Type:	Expression Plasmids
Product Name:	Cpa3 (NM_007753) Mouse Tagged Lenti ORF Clone
Tag:	Myc-DDK
Symbol:	Cpa3
Synonyms:	MC-C; MC-CPA; mMC-C
Mammalian Cell Selection:	Puromycin
Vector:	pLenti-C-Myc-DDK-P2A-Puro (PS100092)
E. coli Selection:	Chloramphenicol (34 ug/mL)
ORF Nucleotide Sequence:	The ORF insert of this clone is exactly the same as(MR226143).
Restriction Sites:	SgfI-MluI
Cloning Scheme:	

Cloning sites used for ORF Shuttling:



* The last codon before the Stop codon of the ORF.

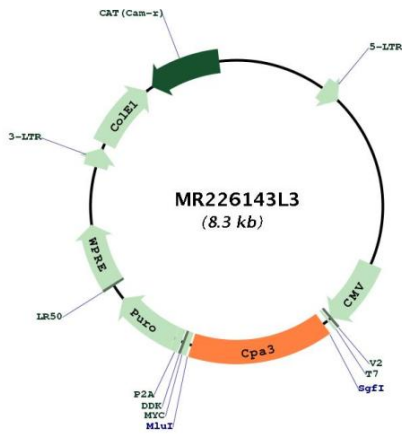
ACCN:	NM_007753
ORF Size:	1251 bp



[View online »](#)

OTI Disclaimer:	The molecular sequence of this clone aligns with the gene accession number as a point of reference only. However, individual transcript sequences of the same gene can differ through naturally occurring variations (e.g. polymorphisms), each with its own valid existence. This clone is substantially in agreement with the reference, but a complete review of all prevailing variants is recommended prior to use. More info
OTI Annotation:	This clone was engineered to express the complete ORF with an expression tag. Expression varies depending on the nature of the gene.
Components:	The ORF clone is ion-exchange column purified and shipped in a 2D barcoded Matrix tube containing 10ug of transfection-ready, dried plasmid DNA (reconstitute with 100 ul of water).
Reconstitution Method:	<ol style="list-style-type: none">1. Centrifuge at 5,000xg for 5min.2. Carefully open the tube and add 100ul of sterile water to dissolve the DNA.3. Close the tube and incubate for 10 minutes at room temperature.4. Briefly vortex the tube and then do a quick spin (less than 5000xg) to concentrate the liquid at the bottom.5. Store the suspended plasmid at -20°C. The DNA is stable for at least one year from date of shipping when stored at -20°C.
RefSeq:	NM_007753.2 , NP_031779.1
RefSeq Size:	1458 bp
RefSeq ORF:	1254 bp
Locus ID:	12873
UniProt ID:	P15089
Cytogenetics:	3 6.25 cM
Gene Summary:	This gene encodes a member of the carboxypeptidase A family of zinc metalloproteases and preproprotein that is proteolytically processed to generate a mature protein product. This product is released by mast cells and may be involved in the degradation of endogenous proteins and the inactivation of venom-associated peptides. Homozygous knockout mice for this gene exhibit impaired mast cell development. [provided by RefSeq, Aug 2015]

Product images:



Circular map for MR226143L3