

Product datasheet for MR226122

Rtn4 (NM_194053) Mouse Tagged ORF Clone

Product data:

Product Type: Expression Plasmids
Product Name: Rtn4 (NM_194053) Mouse Tagged ORF Clone
Tag: Myc-DDK
Symbol: Rtn4
Synonyms: 1110020G17Rik; AA407876; AA409940; AA960376; ASY; C130026I10Rik; mKIAA0886; mKIAA4153; NgA
Vector: pCMV6-Entry (PS100001)
E. coli Selection: Kanamycin (25 ug/mL)
Cell Selection: Neomycin
ORF Nucleotide Sequence: >MR226122 representing NM_194053
 Red=Cloning site Blue=ORF Green=Tags(s)

TTTTGTAATACGACTCACTATAGGGCGGCCGGAATTCGTCGACTGGATCCGGTACCGAGGAGATCTGCC
 GCC**CGGATCGCC**

ATGGAAGACATAGACCAGTCGTCGCTGGTCTCCTCGTCCGCGGATAGCCCGCCCCGGCCCCGCCCGCTT
 TCAAGTACCAGTTCGTGACGGAGCCCGAGGACGAGGAGGACGAGGAAGACGAGGAGGAGGAGGAGGACGA
 CGAGGACCTGGAGGAATTGGAGGTGCTGGAGAGGAAGCCCGCAGCCGGGTGTCCGCGGCTCCGGTGCC
 CCCGCCCGCCACCGCTGCTGGACTTCAGCAGCGACTCGGTGCCCGCCGCCCCGGGGCCGCTGCCGG
 CCGCGCCCCCACCGCCCTGAGAGGCAGCCGCTCTGGAAACGCAGCCCCGCGGCGTCCGCGCCATCCCT
 GCCGCCCGCTGCCGAGTCCCTGCCCTCCAAGCTCCCGGAGGACGACGAGCCTCCAGCGCGGCTCCGGCG
 CCAGCCGGCGCGAGCCCCCTAGCGGAGCCCGCCGCGCCCCCTTCCACGCCGGCCGCGCCCAAGCGCAGGG
 GCTCGGGCTCAGTGGATGAGACCCTTTTGTCTTCTGCTGCATCTGAGCCTGTGATACCTCCTCTGC
 AGTTGTTGACCTCCTGTACTGGAGAGACATTAAGAAGACTGGAGTGGTGTGGTGGCCAGCTTATTCCTG
 CTGCTGTCTTGACAGTGTTCAGCATTGTCAGTGTAAACGGCTACATTGCCTTGGCCCTGCTCTCTGTGA
 CTATCAGCTTTAGGATATATAAGGGTGTGATCCAAGCTATCCAGAAATCAGATGAAGGCCACCCATTGAG
 GGCATATTTGGAATCTGAAGTTGCCATATCAGAGGAATTGGTTTCAAGAAATAGTAAATTCGCTCTTGGT
 CATGTGAACAGCAATAAAAAGAATTGAGGCGTCTTTCTTAGTTGATGATTTAGTTGATTCCCTGAAGT
 TTGCAGTGTGATGTGGTATTTACTTACGTTGGTGCCTTGTCAATGGTTTGACACTACTGATTTTAGC
 TCTGATCTCACTTTCAGTATTCTGTTATATATGAACGCATCAGGCGCAGATAGATCATTATCTAGGA
 CTTGCAACAAGAGCGTTAAGGATGCCATGGCCAAAATCCAAGCAAAAATCCCTGGATTGAAGCGCAAAG
 CAGAA

ACGCGTACGCGGCCGCTCGAGCAGAAACTCATCTCAGAAGAGGATCTGGCAGCAATGATATCCTGGATT
 ACAAGGATGACGACGATAAGGTTTAA



[View online »](#)

Protein Sequence: >MR226122 representing NM_194053
 Red=Cloning site Green=Tags(s)

MEDIDQSSLVSSADSPRPPPAFKYQFVTEPEDEEEDDEEEDEEDEDLEEEVLERKPAAGLSAAPVP
 PAAAPLLDFSSDSVPPAPRGPLAAPPTAPERQPSWERSPAASAPSLPPAAAVLPSKLPEDDEPPARPPA
 PAGASPLAEPAAPSTPAAPKRRGSGSVDLTFALPAASEVPVIPSAAVDLLYWRDIKKTGVVFGASLFL
 LLSLTVFSIVSVTAYIALALLSVTISFRIYKGVIQAIQKSDGHPFRAYLESEVAISEELVQKYSNSALG
 HVNSTIKELRRLFLVDDLVDLKFVAVLMWVFTYVGFALFNGLTLILALISLFSIPVIYERHQAQIDHYLG
 LANKSVKDAMAKIQAKIPGLKRKAE

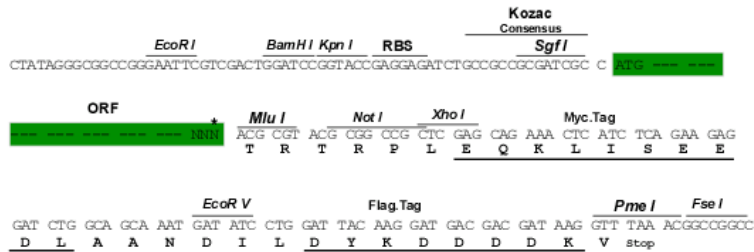
TRTRPLEQKLISEEDLAANDILDYKDDDDKV

Restriction Sites:

Sgfl-MluI

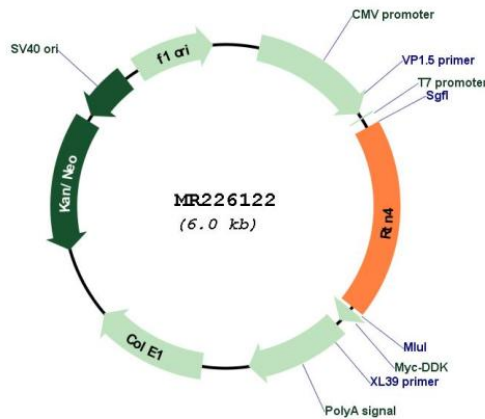
Cloning Scheme:

Cloning sites used for ORF Shuttling:



* The last codon before the Stop codon of the ORF

Plasmid Map:



ACCN:

NM_194053

ORF Size:	1125 bp
OTI Disclaimer:	The molecular sequence of this clone aligns with the gene accession number as a point of reference only. However, individual transcript sequences of the same gene can differ through naturally occurring variations (e.g. polymorphisms), each with its own valid existence. This clone is substantially in agreement with the reference, but a complete review of all prevailing variants is recommended prior to use. More info
OTI Annotation:	This clone was engineered to express the complete ORF with an expression tag. Expression varies depending on the nature of the gene.
Components:	The ORF clone is ion-exchange column purified and shipped in a 2D barcoded Matrix tube containing 10ug of transfection-ready, dried plasmid DNA (reconstitute with 100 ul of water).
Reconstitution Method:	<ol style="list-style-type: none">1. Centrifuge at 5,000xg for 5min.2. Carefully open the tube and add 100ul of sterile water to dissolve the DNA.3. Close the tube and incubate for 10 minutes at room temperature.4. Briefly vortex the tube and then do a quick spin (less than 5000xg) to concentrate the liquid at the bottom.5. Store the suspended plasmid at -20°C. The DNA is stable for at least one year from date of shipping when stored at -20°C.
RefSeq:	NM_194053.3 , NP_918942.1
RefSeq Size:	3804 bp
RefSeq ORF:	1128 bp
Locus ID:	68585
UniProt ID:	Q99P72
Cytogenetics:	11 A3.3
MW:	40.8 kDa
Gene Summary:	Required to induce the formation and stabilization of endoplasmic reticulum (ER) tubules. They regulate membrane morphogenesis in the ER by promoting tubular ER production. They influence nuclear envelope expansion, nuclear pore complex formation and proper localization of inner nuclear membrane proteins. However each isoform have specific functions mainly depending on their tissue expression specificities.[UniProtKB/Swiss-Prot Function]