

Product datasheet for **MR226083**

Nfatc1 (NM_001164110) Mouse Tagged ORF Clone

Product data:

Product Type:	Expression Plasmids
Product Name:	Nfatc1 (NM_001164110) Mouse Tagged ORF Clone
Tag:	Myc-DDK
Symbol:	Nfatc1
Synonyms:	2210017P03Rik; AI449492; AV076380; NF-ATc; NFAT2; NFATc; Nfatcb
Vector:	pCMV6-Entry (PS100001)
E. coli Selection:	Kanamycin (25 ug/mL)
Cell Selection:	Neomycin



[View online »](#)

ORF Nucleotide Sequence:

>MR226083 representing NM_001164110
 Red=Cloning site Blue=ORF Green=Tags(s)

TTTTGTAATACGACTCACTATAGGGCGGCCGGGAATTCGTCGACTGGATCCGGTACCGAGGAGATCTGCC
 GCC**CGGATCGCC**

ATGCCAAGTACCAGCTTCCAGTCCCTTCCAAGTTTCCAATCGGCCCTCCGGCCGAGTCTGCGGGAGCG
 GAGAACTTTGCGGCCCGCGCCGCCCTCCGGCGCACCATGAAGCGGCCGAGGAAGAACAACACTACAGTTA
 TGTGTCCCTAGTGTCACCTCGACCCTGCCCTTCCCACAGCACACTCTGCCTTGCCAGCAGCATGCCAC
 GACCTCCAGACGTCCACCCCGGGTATCTCAGCTGTTCTTCCAGCAATCATCCCCCAGTTACGGAGGGG
 CTGTGGACAGCGGGCCTTCGGGATACTTCTGTCTCTGGCAACACCAGACCCAACGGGGCCCGACTCT
 GGAGAGTCGAGAATCGAGATCACCTCTACCTGGGCCTACACCATGGCAGCGGCCAGTTTTTCCACGAC
 GTGGAGGTGGAAGACGTACTTCTAGCTGCAAGCGCTCACCGTCTACAGCAACCTGCACCTGCCAGCC
 TGGAGCCTACAGAGACCCCTCCTGCCTGAGCCAGCCAGCAGTCTCTCTCCAGAAGCTGTAACCTGA
 GGCCTCCTCTACGAGTCCAACACTCTCTACCCATACGCGTCCCCCAGACCTCTCCGTGGCAGTCAACC
 TGCGTGTCTCCAAGACCACGGACCCGGAGGAGGGTTTTCCCGAAGCCTGGGTGCCTGCCACCTGCTAG
 GATCGCCAGGCACTCCCATCCACCTCTCTCGGGCAAGCATCACGGAGGAGAGCTGGTCTGGTGGCCCG
 CGGCTCCCGGCCACGTCCCCCTGCAACAAGCGCAAGTACAGTCTCAATGGCCGGCAGCCCTCCTGCTCA
 CCCCACACTCACCCACCATCCCCCATGGCTCCCCCTCGGGTCAAGTGTGACCGAAGATACCTGGCTCG
 GTAACACCACCCAGTATACCAGTCTGCCATTGTGGCAGCCATCAACGCCTGACCACCGATAGCACTCT
 GGACCTGGGTGATGGGGTCCCTATCAAGTCTCGAAAGACAGCACTGGAGCATGCGCCCTCTGTGGCCCTC
 AAAGTAGAGCCAGCTGGGAAGACCTGGGCACCACTCCACCACTTCTGACTTCCACCCGAGGAGTACA
 CCTTCCAGCACCTTCGGAAGGGTGCCTTTTTCGAGCAGTATCTGTGCGTCCACAGGCCCTCGTATCAGT
 GGCGAAGCCCAAGTCTCTTTCCCGACATCATATAGGCCATCCTTGCCTGCCCTTGACTGGCAGCTC
 CCGTACATTCTGGTCCATACGAGCTTCGGATCGAGGTGCAGCCCAAGTCTCACACAGGGCTCACTATG
 AGACGGAAGGCAGCCGGGGGCTGTGAAGGCTTCAAGTGGAGGACACCCATTGTGCAGTACACGGTTA
 CTTGGAGAATGAACCTCTCACGCTACAGCTGTTTATTGGGACGGCTGACGACCGCTGCTGAGGCCCCAC
 GCCTTCTACCAGGTCCACCGGATCACGGGAAGACTGTCTCCACCACAGCCACGAGATCATCTGTCCA
 ACACAAAGTCTGGAGATCCCGTTGCTTCCAGAAAATAACATGCGAGCCATCATCGACTGTGCTGGGAT
 CCTGAAGCTCAGAACTCTGATATTGAGCTGAGGAAAGGGGAGACAGACATCGGGAGGAAGAACCAGG
 GTGAGGCTGGTCTTCCGAGTTACATCCACAGCCCAATGGCCGGACGCTGTCTCTCCAGGTGGCCCTCGA
 ACCCTATCGAGTGTCCAGCGGTGAGCCAGGAGCTGCCCTCGTGGAGAAGCAGAGCAGACAGAGCTA
 CCCAGTATCGCGGGGAAGAAGATGGTGTCTGTGGCCATAAATTTCTGCAAGACTCCAAGTCAATTTTC
 GTGGAGAAGGCTCCAGATGGCCACCACGTCTGGGAGATGGAAGCAAAGACTGACCGGGACCTGTGCAAGC
 CAAATTCCTGGTGGTTGAGATACCACCTTCCGCAACCAGAGGATAACCAGCCCCGTCCAAGTCAATTT
 CTATGTCTGCAACGGGAACGGAAGAGAAGCCAGTACCAGCGTTTACGTACCTTCTGCCAATGTTCCA
 ATTATAAAGACAGAACCACGGACGACTTTGAGCCAGCTCTGACCTGTGGACCAATGAGCCAGGGGATTA
 GTCTCTGCGGAGGCCTTACTACAGCCAACAGCTCACCATGCCTCCCGACCCGGCTCCTGCCTCGTGGC
 TGGCTTCCGCCCCTGCTCCAGAGGAACAGCTGATGCCACGCCTCCCAACGCAAGCCGAGGACTCCAC
 GACCTTTCCTCTCCTGCCTACACCAAGGCCTCACCAACCCGGGCCACAGTGGTACCTTGGACTTCAGC
 CACCCGCTTCGGAGGCCCCACCATGCAGGAAGTGCCGAGACCATGGCCATCCAACCAACTCGCCTGA
 GCAGCCCCATCCGCCAGGCTACAGCCGAGGTGAGTCCACATCTGAACAGTAGTGTCCCTTGGTTCGC
 CGACAAGTGTCTGTCCCAACAGCCCCTTCTCCACTTCCATCTGCTGCCCAAGAGCCAGCCTGCTTAC
 AGTCTCAGCCCTCCCTCCTGACATGGGCCACCGCAGCCACAACCGAGAAGGTTCAAAGAAATGAATC
 TCCAGCCGATTGCCAGAGGTGTGTGAGGACAGTGGCCATAAATGGCCCTATTCTGTAGTATCAAG
 CAAGAGCCTGAGGAATTGGACCAGTGTACTTGGATGATGTAATGAGATCATACGTAACGACCTCTCCA
 GCACGATCCCCACTCC

AG**CGGACCG**ACGCGTACGCGGCCGCTCGAGCAGAACTCATCTCAGAAGAGGATCTGGCAGCAAATGATATCC
 TGGATTACAAGGATGACGACGATAAGGTTTAA

Protein Sequence: >MR226083 representing NM_001164110
 Red=Cloning site Green=Tags(s)

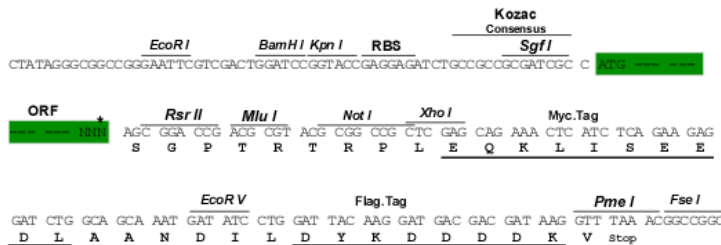
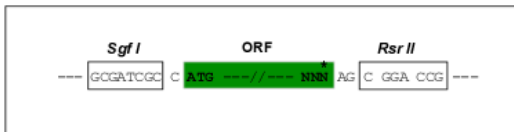
```
MPSTSFVPSKFPLGPPAAVCGSGETLRPAPPSGGTMKAAEEEHYSYVSPSVTSTLPLPTAHSALPAACH
DLQTSTPGISAVPSANHPPSYGGAVDVGSPGYFLSSGNTRPNGAPTLSPRIEITSYGLHHGSGQFFHD
VEVEDVLPSCKRSPSTATLHLPSLEAYRDPSCLSPASSLSSRSCNSEASSYESNYSYPYASPQTSWPWQSP
CVSPKTTDPEEGFPRSLGACHLLGSPRHPSTSPRASITTEESWLGARGSRPTSPCNKRKYSLNGRQPCSCS
PHHSPTSPHGSFPRVSVTDTWLGNTTQYTSSAIVAAINALTTDSTLDLDGQVPIKSRKTALEHAPSVAL
KVEPAGEDLGTTPPTSDFPPEEYTFQHLRKGAFCEQYLSVPQASYQWAKPKSLSPTSYMSPSLPALDWQL
PSHSGPYELRIEVQPKSHHRAHYETEGSRGAVKASAGGHPIVQLHGYLENEPLTLQLFIGTADDRLLRPH
AFYQVHRITGKTVSTTSHEIILSNTKVIPLPENNMRAIIDCAGILKLRNSDIELRKGETDIGRKNTR
VRLVFRVHIPQPNGRTLSLQVASNPIECSQRS AQELPLVEKQSTDSYPVIGGKMMVL SGHNFLQDSKVIF
VEKAPDGHVWEMEAKTRDLCKPNSLVVEIPFRNQRITSPVQVSFYVCNGKRKRSQYQRFTYLPANVP
IIKTEPTDDFEPALTCGPMSQGISPLRPYYSQQLTMPDPGSCLVAGFAPCSQRNTLMPTPPNASPKLH
DLSSPAYTKGLTNPGHSGHLGLQPPASEPTMQEVPRPMAIQPNSPEQPPSARLQPQVSPHLNSSCPLGR
RQVLCPNSSPLPSAAQEPACLQSSALPPDMGHRQPQPQKQVRNESP AVLPEVCEDSGHNLAPIPVVIK
QEPEELDQLYLDVNEIIRNDLSSTIPHS
```

SGPTRRRL**E**QKL**I**SEED**L**AAND**I**LDYKDDDD**K**V

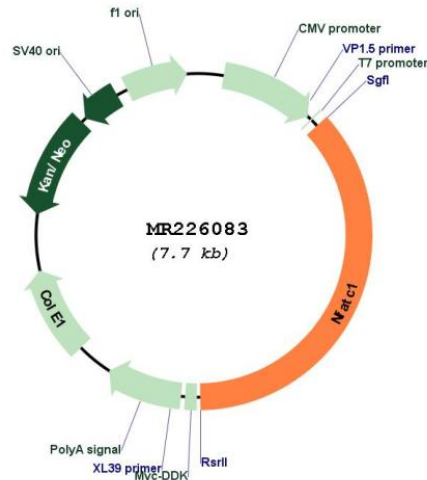
Restriction Sites: SgfI-RsrII

Cloning Scheme:

Cloning sites used for ORF Shuttling:



* The last codon before the Stop codon of the ORF

Plasmid Map:


ACCN: NM_001164110

ORF Size: 2817 bp

OTI Disclaimer: The molecular sequence of this clone aligns with the gene accession number as a point of reference only. However, individual transcript sequences of the same gene can differ through naturally occurring variations (e.g. polymorphisms), each with its own valid existence. This clone is substantially in agreement with the reference, but a complete review of all prevailing variants is recommended prior to use. [More info](#)

OTI Annotation: This clone was engineered to express the complete ORF with an expression tag. Expression varies depending on the nature of the gene.

Components: The ORF clone is ion-exchange column purified and shipped in a 2D barcoded Matrix tube containing 10ug of transfection-ready, dried plasmid DNA (reconstitute with 100 ul of water).

Reconstitution Method:

1. Centrifuge at 5,000xg for 5min.
2. Carefully open the tube and add 100ul of sterile water to dissolve the DNA.
3. Close the tube and incubate for 10 minutes at room temperature.
4. Briefly vortex the tube and then do a quick spin (less than 5000xg) to concentrate the liquid at the bottom.
5. Store the suspended plasmid at -20°C. The DNA is stable for at least one year from date of shipping when stored at -20°C.

RefSeq: [NM_001164110.1](#), [NP_001157582.1](#)

RefSeq Size: 4896 bp

RefSeq ORF: 2820 bp

Locus ID: 18018

Cytogenetics: 18 53.66 cM

MW: 102.1 kDa