

Product datasheet for **MR226041**

Icam5 (NM_008319) Mouse Tagged ORF Clone

Product data:

Product Type:	Expression Plasmids
Product Name:	Icam5 (NM_008319) Mouse Tagged ORF Clone
Tag:	Myc-DDK
Symbol:	Icam5
Synonyms:	CD50; ICAM-3; Icam3; Tlcn; TLN
Mammalian Cell Selection:	Neomycin
Vector:	pCMV6-Entry (PS100001)
E. coli Selection:	Kanamycin (25 ug/mL)



[View online »](#)

ORF Nucleotide
Sequence:

>MR226041 representing NM_008319
 Red=Cloning site Blue=ORF Green=Tags(s)

TTTTGTAATACGACTCACTATAGGGCGGCCGGAATTCGTCGACTGGATCCGGTACCGAGGAGATCTGCC
 GCC**CGCATCGCC**

ATGCCGGGCTTCGCCAGGGCTGCGCCGAGCGCTCCTCGGCCTCTGGGCTGCCCTGGGCTGGGGATCC
 TAGGCATCTCAGCGGTTCGCGCTAGAACCTTTCTGGGCGGACCTTCAGCCCGCGTGGCGCTCGTGGAGCG
 CGGGGGCTCGCTGTGGCTCAACTGCAGCACTAAGTGTCCGCGCCGAGCGCGGTGGCTGGAGACCTCG
 CTACGCCGAAACGGGACCCAGAGGGTCTGCGCTGGCTGGCTCGGCAGCTGGTGGACATCCGAGAGCCTG
 AGACCCAGCCGGTCTGCTTCTCCGCTGCGCGCCGACACTCCAAGCGCTGGACTCATCCGAACCTT
 CCAGCGACCGGATCGGGTAGAGCTGGTCCGCTCCCTTCTTGGCAGCCAGTGGCGAGAACTTCACCTTG
 AGCTGCAGGGTCCCGGAGCAGGACCCGAGCGAGCCTCACATTGACCCTGCTGCGGGCGGCCAGGAGC
 TGATTCGCCGAGTTTCGTAGCGAGCCACCCGAGCGGGGTGCGATGCTCACCGCCAGGGTCTGGC
 ACGCAGGGAGGACCACAGGGTCAATTTCTCATGCCTCGCCGAGCTTGACCTGCGGCCACACGGCTTGGGA
 CTGTTTGCAAATAGCTCGGCCCCAGACAGCTCCGTACCTTTGCCATGCCTCCACATTCGCCGAGTCTTA
 TTGCTCCCGAGTCTTAGAAGTGGACTCAGAAAGGCCGGTGAATTGCACGTTGGATGGACTGTTCTCTGC
 CCCAGAAGCCGGGTTTACCTCTCTCTGGGAGATCAGAGGCTCAATCCTAATGTGACCCTCGATGGGGAC
 AGCCTTGTGGCCACTGCCACAGCTACAGCAAGCGCAGAACAGGAAGCCAAACAGCTGATGTGCGTGC
 TGACCCTCGGGGGCGAAAGCAGGGAGACCCAGGAAAACCTGACTGTTTACAGCTTCCCGACTCCTCTTCT
 GACTTTGAGTGAGCCAGAAGCCCCGAGGGAAAAATGGTACCATAAGCTGCTGGCAGGGGCTCGAGCC
 CTTGTACCCTGGAGGGAATTCAGCTGCGCTCCCGGGCAGCCCGCTGAGCTCCAGTTAAATGTTACAA
 AGAACGATGACAAGCGGGGCTTCTCTGCGAGCCCGCCCTCGATGTGGACGGGAAACTTAAGAAAAA
 CCAGAGCTCTGAGCTTCGTGTCCTGTATGCACCTCGCCTGGATGACTTGGATTGTCCAGAAAGCTGGACG
 TGCCAGAGGGTCCAGAGCAGACCTCCACTGCGAGGCCCGGAAACCTGAGCCCTCGGTGCACTGTG
 CAAGGCCCTGAGGGCGGGCGGTGCTAGCGCTGGGCCTATTGGGTCCAGTGACCCGTGCCCTCGCAGGCAC
 TTACCGATGCACAGCAGTCAATGGGCAAGGCCAGGCGGTCAAAGATGTGACCCTGACCGTGAATATGCC
 CCAGCGCTGGACAGTGTAGGCTGCCAGAACATATTACTTGGCTGGAGGGAAACGGAGGCATCGCTTAGCT
 GTGTGGCACACGGGTCCACCACCTAGCGTGAGTTGTGTGCGCTCTGAAAAGGAGGAAGTCATGGAAGG
 GCCTCTGCGCGTGGCCCGGAGCAGCCCGCATTACCGATGCGAAGCCATCAACGCCAGAGGATCAGCG
 GCCAAAAATGTGGCCGTACGGTGAATATGGTCCAGTTTTGAGGAGTGGGCTGCCCCAGCAACTGGA
 CGTGGGTAGAGGGATCTGAAAAGCTGTTTTCTGTGAAGTTGATGGGAAGCCAGAACCACGTGTGGAGTG
 CGTAGGCTCGGAGGGTGAAGCGAAGGGATAGTGTGCCCTTGGTGTCTCAAACCTGCTGCTAGAAAAC
 TCTATGACCCCTGGTAACCTGTACCCGGCATTACCTCTGCAACGCCACCAACCGGCACGGCTCCACAG
 TCAAAACAGTCGTGAGCGCGGAGTCCCGCCACAGATGGATGAATCCAGTTGCCGAGTCCACAGAC
 CTGGCTGGAAGGAGCTGAGGCTACCGCGTGGCTGCAGTGCCAGGGGCCGCCCTCTCCACGGGTGCAT
 TGCTCCAGGGAGGGTCCCGCCAGGCTGGAGAGGCTACAGGTGTCCCGAGAGGATGCGGGGACCTACCGCT
 GTGTGGCCACCAATGCGCATGGCAGGATTACGGACGGTCACTGTGGGTGTGGAATACCGGCCTGTGGT
 GGCTGAGCTGGCAGCCTCGCCCCAAGCGTGGCGCCGGGCGTAACCTCACTCTGACCTGCCGCGCAGAG
 GCTTGGCCTCCAGCCAGATCAGCTGGCGCGCCCGGGGGCTCTAACCTCGGCCTCTCCAGCAACA
 ATAGCACTCTGAGCGTGGCGGGAGCCATGGGCAGCCATGGCGGCGAGTATGAGTGTGCAGCGACCAATGC
 GCATGGGCGCCACGCACGGCGCATCACAGTGCAGTGGCCGGTCCATGGCTGTGGGTGCTGTGGGCGGT
 GCGGCAGGGGGCGCGGCTGCTGGCCGCTGGGCGGCCCTGGCCTTCTACGTGCAATCCACCGCTTGCA
 AGAAGGGCGAGTACAACGTCCAGGAGGCTGAGAGCTCAGGCGAGGCGGTGTGTCTCAATGGCGGGGCGG
 GACACCGGGTGCAGAAGGCGGAGCAGAGACCCAGGCACTGCAGAGTCACTGCAGATGGCGAGGTTTTTC
 GCTATCCAGCTGACATCTTC

ACGCGTACGCGGCCGCTCGAGCAGAACTCATCTCAGAAGAGGATCTGGCAGCAAATGATATCCTGGATT
 ACAAGGATGACGACGATAAGGTTTAA

Protein Sequence: >MR226041 representing NM_008319
 Red=Cloning site Green=Tags(s)

MPGPPGLRRALLGLWAALGLGILGISAVALEPFWADLQPRVALVERGGSLWLNCSSTNCPRPERGGLETS
 LRRNGTQRGLRWLARQLVDIREPETQPVCFFRCARRTLQARGLIRTFQRPDRVELVPLPSWQPVGENFTL
 SCRVPGAGPRASLTLLLRGGQELIRRSFVGEPPRARGAMLTARVLARREDHRVNF SCLAELDLRPHGLG
 LFANSSAPRQLRTFAMPPHSPSLIAPRVLEVDSESRPVTCTLDGLFPAPEAGVYLSLGDQRLNPNVTLGDG
 SLVATATATASAEQEGTKQLMCVVTLGGESRETQENLTVYSFPTPLLTLSEPEAPEGKMTI SCWAGARA
 LVTLEGIPAAAVPGQPAELQLNVTKNDDKRGFFCDAALDVGDELTRKNQSSSELRLVYAPRLDDDCPRSWT
 WPEGPEQTLHCEARGNPEPSVHCARPEGGAVLALGLLGPVTRALAGTYRCTAVNGQGQAVKDVTLTVEYA
 PALDSVGCPEHITWLEGTEASLSCVAHGVPSPVSCVRSKKEEVMGPLRVAREHAGTYRCEAINARGSA
 AKNVAVTVEYGPSFEELGCPNWTWVEGSGKLFSCVDGKPEPRVECVGSEGASEGIVLPLVSSNSGPRN
 SMTPGNLSPGIYLCNATNRHGSTVKTVVVSAESPPQMDDESSCPHQWLEGAEATALACSARGRPSRVH
 CSREGAARLERLQVSREDAGTYRCVATNAHGTDSRTVTVGVEYRPVVAELAASPPSVRPGNFTLTCRAE
 AWPPAQISWRAPPALNLGLSSNNSTLSVAGAMGSHGGEYCAATNAHGRHARRITVRVAGPWLWVAVGG
 AAGGAALLAAGAGLAFYVQSTACKKGEYVQEAESSGEAVCLNGAGGTPGAEGGAETPGTAESPADGEV
 AIQLTSS

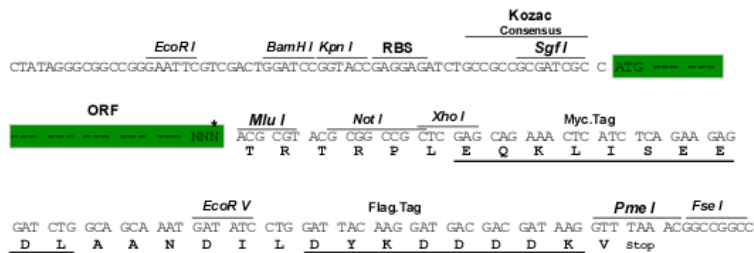
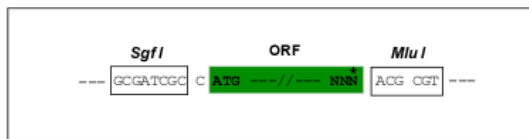
TRTRPLEQKLISEEDLAANDILDYKDDDDKV

Chromatograms: https://cdn.origene.com/chromatograms/mm9012_e01.zip

Restriction Sites: SgfI-MluI

Cloning Scheme:

Cloning sites used for ORF Shuttling:



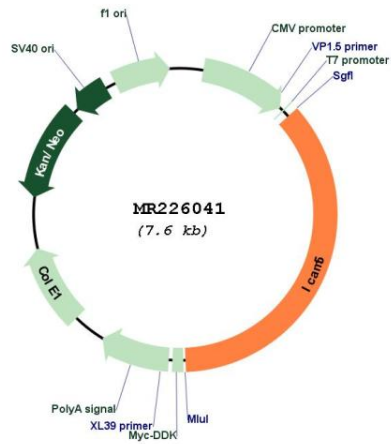
* The last codon before the Stop codon of the ORF

ACCN: NM_008319

ORF Size: 2751 bp

OTI Disclaimer:	<p>Due to the inherent nature of this plasmid, standard methods to replicate additional amounts of DNA in E. coli are highly likely to result in mutations and/or rearrangements. Therefore, OriGene does not guarantee the capability to replicate this plasmid DNA. Additional amounts of DNA can be purchased from OriGene with batch-specific, full-sequence verification at a reduced cost. Please contact our customer care team at custsupport@origene.com or by calling 301.340.3188 option 3 for pricing and delivery.</p> <p>The molecular sequence of this clone aligns with the gene accession number as a point of reference only. However, individual transcript sequences of the same gene can differ through naturally occurring variations (e.g. polymorphisms), each with its own valid existence. This clone is substantially in agreement with the reference, but a complete review of all prevailing variants is recommended prior to use. More info</p>
OTI Annotation:	This clone was engineered to express the complete ORF with an expression tag. Expression varies depending on the nature of the gene.
Components:	The ORF clone is ion-exchange column purified and shipped in a 2D barcoded Matrix tube containing 10ug of transfection-ready, dried plasmid DNA (reconstitute with 100 ul of water).
Reconstitution Method:	<ol style="list-style-type: none"> 1. Centrifuge at 5,000xg for 5min. 2. Carefully open the tube and add 100ul of sterile water to dissolve the DNA. 3. Close the tube and incubate for 10 minutes at room temperature. 4. Briefly vortex the tube and then do a quick spin (less than 5000xg) to concentrate the liquid at the bottom. 5. Store the suspended plasmid at -20°C. The DNA is stable for at least one year from date of shipping when stored at -20°C.
RefSeq:	NM_008319.2 , NP_032345.2
RefSeq Size:	2982 bp
RefSeq ORF:	2754 bp
Locus ID:	15898
UniProt ID:	Q60625
Cytogenetics:	9 7.7 cM
MW:	97.4 kDa
Gene Summary:	ICAM proteins are ligands for the leukocyte adhesion protein LFA-1 (integrin alpha-L/beta-2). [UniProtKB/Swiss-Prot Function]

Product images:



Circular map for MR226041