

## Product datasheet for **MR225966**

### **Mau2 (NM\_001167939) Mouse Tagged ORF Clone**

#### **Product data:**

Product Type:	Expression Plasmids
Product Name:	Mau2 (NM_001167939) Mouse Tagged ORF Clone
Tag:	Myc-DDK
Symbol:	Mau2
Synonyms:	9130404D08Rik; A930019L04Rik; C77863; C79014; Mau-2; mKIAA0892
Mammalian Cell Selection:	Neomycin
Vector:	pCMV6-Entry (PS100001)
E. coli Selection:	Kanamycin (25 ug/mL)



[View online »](#)

ORF Nucleotide  
Sequence:

>MR225966 representing NM\_001167939  
Red=Cloning site Blue=ORF Green=Tags(s)

TTTTGTAATACGACTCACTATAGGGCGGCCGGGAATTCGTCGACTGGATCCGGTACCGAGGAGATCTGCC  
GCC**CGGATCGCC**

ATGGCGGCACAGGCGCGGCTGCGGCGCAGGCGCGGCTGCAGCTCAGGCTGCCCGGCACAGGCCGCAC  
AGGCCGAGGCAGCCGAGTCGTGGTATCTGGCTCTCCTGGGTTTCGCCGAGCACTTCCGAACATCTAGCCC  
GCCAAGATCCGCTTGTGCGTTCATTGCCTGCAGGCCGTGTTCCCTTCAAGCCGCTCAGCGGATCGAG  
GCCCGGACGCACCTGCAGCTCGGCTCGGTGCTTTACCACCACACGAAGAACAGCGAGCAGGCGCGCAGCC  
ACCTGGAGAAGGCGTGGTTGATATCACAGCAAATCCCACAGTTTGAAGATGTTAAATTTGAGGCAGCAAG  
CCTGTTGTGAGAGCTGTATTGTCAAGAGAACTCCGTGGATGCAGCAAACCCTGCTGCGAAAGCCATC  
CAGATCTACAACAGACGCCATACTGGCACTGTCGCTGCTCTCCAGCTCGCTCAACTGCACACACTGG  
AGAAGGACCTGGTATCCGCTGTGACCTCTAGGCGTGGGGGCTGAGTATGCCCGAGTGGTGGGATCTGA  
ATATAAAGGCAATTATCCTGCTCAGCAAGGGGATGCTGCTGTTGATGGAGCGCAAACCTGCAAGAGGTG  
CACCCACTGCTCACACTGTGTGGGCAGATTGTAGAGAAGTGGCAGGGCAACCCCATCCAGAAGGAGTCC  
TACGTGCTTCTTCTGCTGCTGACAGGTGACCCACTACCTGGATGCTGGGCGAGGTGAAGAGCGTCAAGCC  
GTGCTGAAGCAGCTGCAGCAGTGCATTAGACCATCTCCACACTACATGATGATGAAATCCTGCCCAGC  
AACCTGCTGACCTCTTCCACTGGCTGCCAAGGAGCAGATGTGTGCTCGTCTACCTGGTACAGTGA  
TGCAATTCGATGCAGGCTGGTTACCTGGAGAAGGCACAGAAGTACACAGACAAGGCGCTCATGCAGTTGGA  
GAAGCTTAAGATGCTGGACTGCAGCCCTATCCTGTCGCTTTCCAAGTATCCTGCTGGAGCATATCATC  
ATGTGCCGGCTTGTACAGGCCACAAGGCCACTGCACTACAGGAGATCTCCAGGTCTGCCAGCTATGCC  
AGCAGTCCCCTAGGCTCTTCTCAACCATGCTGCCAGTTGCACACACTGTTGGGCTGTATTGTGTCTC  
CGTGAAGTGCATGGATAATGCTGAAGCCCAATTTACCACAGCCCTTCGGCTCACCAACCACAGGAGTTG  
TGGCCTTCATCGTGACCAACCTTGCGAGTGTGTATATACGAGAAGGAAATAGACACCAAGAGGTAAGTGT  
ACAGTTTGCTTGAGAGGATAAACCCGGACCACAGCTTCCCGGTCAGCTCACACTGCCTCCGAGCAGCAGC  
CTTCTACGTGCGAGGGCTCTTCTCCTTCTCCAGGGCCGCTACAACGAAGCCAAGCGTTTCTTCGAGAA  
ACTCTGAAGATGTCAAATGCAGAGGACCTGAACCGCTCACAGCCTGCTCCCTTGTGCTGCTGGGTCACA  
TCTTCTATGTGTTGGGAAATCACAGGGAGAGTAACAACATGGTGGTACCTGCCATGCAGCTGGCCAGCAA  
GATCCCAGACATGTCTGTGCAGCTGTGGTATCTGCCCTCCTGAGAGACCTAAACAAGGCATGTGGGAAC  
GCCATGGATGCCATGAAGCCGCACAGATGCACCAGAACTTCTCACAGCAGCTGCTGCAGGACCACATCG  
AGGCTGTAGCCTCCCAGAGCACAACTCATTAGGATGGCCACCCCTGTGCAGTTCGAAGCTCAGAAT  
GGACCAACACCAGCCTGGCCAGCCTTCTGTGAGGCTGTGTCCGCAACTTGGACCAACACTGGAGCTC  
TCTGGGAACAAAACCACAGGCTGCCACCAGTCCCTCACCATTGTCCAGAGCTAAGTCC

**ACGCGT**ACGCGGCCGCTCGAGCAGAACTCATCTCAGAAGAGGATCTGGCAGCAAATGATATCCTGGATT  
ACAAGGATGACGACGATAAGGTTTAA

**Protein Sequence:** >MR225966 representing NM\_001167939  
Red=Cloning site Green=Tags(s)

```

MAAQAAAAQAAAAQAAAAQAAQAEAAESWYLALLGFAEHFRTSSPPKIRLCVHCLQAVFPFKPPQRIE
ARTHLQLGSQLYHHTKNSEQARSHLEKAWLISQQIPQFEDVKFEASLLSELYCQENSVDAKPLLRKAI
QISQQTPYWHCRLLFQLAQLHTLEKDLVSACDLLGVGAEYARVVGSEYTRALFLLSKGMILLMERKLOEV
HPLLTLGQIVENWQGNPIQKESLRVFFLVLVQVTHYLDAGQVKSVPKCLKQLQCCIQTISTLHDEILPS
NPADLFHWLPKEHMCVLVYLVTVMHSMQAGYLEKAQKYTDKALMQLEKLMKMLDCSPILSSFQVILHEII
MCRLVTGHKATALQEISQVCQLCQQSPRLF SNHAAQLHTLLGLYCVSVNCMDNAEAQFTTALRLTNHQEL
WAFIVTNLASVYIREGNRHQEVLYSLLERINPDHSPVSSHCLRAAAFYVRGLFSFFQGRYNEAKRFLRE
TLKMSNAEDLNRLTACSLVLLGHIFYVLGNHRESNNMVVPAMQLASKIPDMSVQLWSSALLRDLNACGN
AMDAHEAAQMHQNFSQLLDHIEACSLPEHNLITMAHPLCSSKLRMDPTPAWPAFCEACVRNLDPTLEL
SGNKTRVPTSPSPLSRAKS
    
```

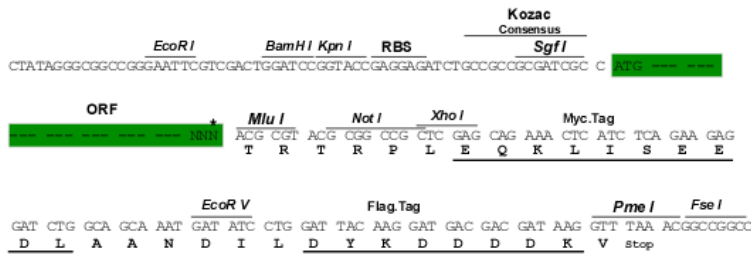
TRTRPLEQKLISEEDLAANDILDYKDDDDKV

**Chromatograms:** [https://cdn.origene.com/chromatograms/ja1311\\_f02.zip](https://cdn.origene.com/chromatograms/ja1311_f02.zip)

**Restriction Sites:** Sgfl-MluI

**Cloning Scheme:**

Cloning sites used for ORF Shuttling:



\* The last codon before the Stop codon of the ORF

**ACCN:** NM\_001167939

**ORF Size:** 1950 bp

**OTI Disclaimer:** Due to the inherent nature of this plasmid, standard methods to replicate additional amounts of DNA in E. coli are highly likely to result in mutations and/or rearrangements. Therefore, OriGene does not guarantee the capability to replicate this plasmid DNA. Additional amounts of DNA can be purchased from OriGene with batch-specific, full-sequence verification at a reduced cost. Please contact our customer care team at [custsupport@origene.com](mailto:custsupport@origene.com) or by calling 301.340.3188 option 3 for pricing and delivery.

The molecular sequence of this clone aligns with the gene accession number as a point of reference only. However, individual transcript sequences of the same gene can differ through naturally occurring variations (e.g. polymorphisms), each with its own valid existence. This clone is substantially in agreement with the reference, but a complete review of all prevailing variants is recommended prior to use. [More info](#)

**OTI Annotation:** This clone was engineered to express the complete ORF with an expression tag. Expression varies depending on the nature of the gene.

**Components:** The ORF clone is ion-exchange column purified and shipped in a 2D barcoded Matrix tube containing 10ug of transfection-ready, dried plasmid DNA (reconstitute with 100 ul of water).

**Reconstitution Method:**

1. Centrifuge at 5,000xg for 5min.
2. Carefully open the tube and add 100ul of sterile water to dissolve the DNA.
3. Close the tube and incubate for 10 minutes at room temperature.
4. Briefly vortex the tube and then do a quick spin (less than 5000xg) to concentrate the liquid at the bottom.
5. Store the suspended plasmid at -20°C. The DNA is stable for at least one year from date of shipping when stored at -20°C.

**RefSeq:** [NM\\_001167939.2](#)

**RefSeq Size:** 5365 bp

**RefSeq ORF:** 1953 bp

**Locus ID:** 74549

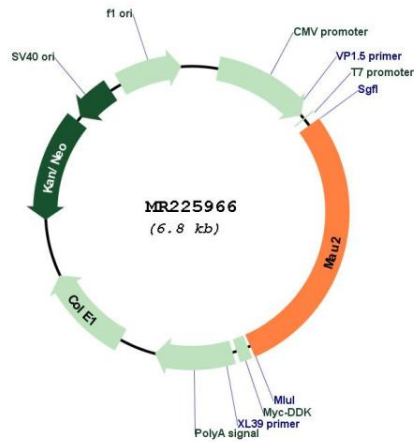
**UniProt ID:** [Q9D2X5](#)

**Cytogenetics:** 8 B3.3

**MW:** 73.5 kDa

**Gene Summary:** Plays an important role in the loading of the cohesin complex on to DNA. Forms a heterodimeric complex (also known as cohesin loading complex) with NIPBL/SCC2 which mediates the loading of the cohesin complex onto chromatin Plays a role in sister chromatid cohesion and normal progression through prometaphase.[UniProtKB/Swiss-Prot Function]

Product images:



Circular map for MR225966