

## Product datasheet for **MR225919**

### **Rps6 (NM\_009096) Mouse Tagged ORF Clone**

#### Product data:

**Product Type:** Expression Plasmids  
**Product Name:** Rps6 (NM\_009096) Mouse Tagged ORF Clone  
**Tag:** Myc-DDK  
**Symbol:** Rps6  
**Synonyms:** S6R  
**Mammalian Cell Selection:** Neomycin  
**Vector:** pCMV6-Entry (PS100001)  
**E. coli Selection:** Kanamycin (25 ug/mL)  
**ORF Nucleotide Sequence:** >MR225919 representing NM\_009096  
**Red=Cloning site Blue=ORF Green=Tags(s)**

TTTTGTAATACGACTCACTATAGGGCGCCGGGAATTCGTCGACTGGATCCGGTACCGAGGAGATCTGCC  
GCC**CGATCGCC**

ATGAAGCTGAACATCTCCTTCCCCGCCACCGGCTGTCAGAAGCTCATCGAGGTGGATGACGAGCGCAAGC  
TCCGCACCTTCTATGAGAAGCGCATGGCCACGGAAGTAGCCGCTGATGCTCTTGGTGAAGAGTGGAAAGG  
TTATGTGGTCCGGATCAGCGGTGGGAATGACAAGCAAGTTTTCCCATGAAGCAAGGTGTTCTGACCCAT  
GGCAGAGTGCCCTGCTGTTGAGTAAGGGGCATTCCTGTTACAGGCCAAGGAGAAGTGGAGAGGGAAGC  
GCAAGTCTGTTCTGGTGCATTGTGGACGCTAATCTCAGTGTTCTCAACTTGGTCATTGTAAGAAAGG  
AGAGAAGGATATTCTGGACTGACAGACTACTGTGCCTCGTCGGTGGGACCTAAAAGGGCTAGTAGA  
ATCCGCAAGCTTTTTAATCTCTCAAAGAAGATGATGTCCGCCAGTATGTTGTCAGGAAGCCCTAAACA  
AAGAAGGTAAGAAGCCCAGGACCAAAGCACCCAAGATTCAGCGACTTGTTACTCCTCGTGTCTGCAACA  
CAAACGCCGACGTATTGCTCTGAAGAAGCAACGCACTAAGAAGAACAAGGAGGAGGCTGCAGAATACGCT  
AAACTTTGGCCAAGAGAATGAAGGAAGCCAAAGAAAAGCGCCAGGAACAGATTGCCAAGAGACGTAGGC  
TGTCTCACTGAGAGCTTCTACTTCTAAGTCTGAGTCCAGTCAAAA

**ACGCGT**ACGCGGCCGCTCGAGCAGAACTCATCTCAGAAGAGGATCTGGCAGCAAATGATATCCTGGATT  
ACAAGGATGACGACGATAAGGTTTAA



[View online »](#)

**Protein Sequence:** >MR225919 representing NM\_009096  
 Red=Cloning site Green=Tags(s)

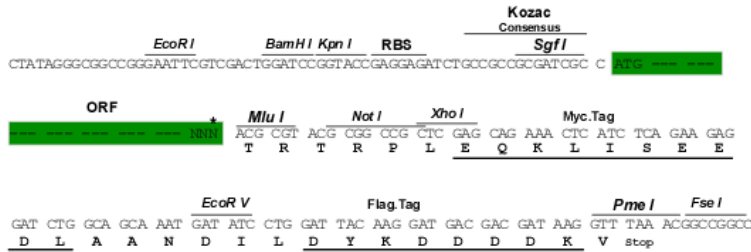
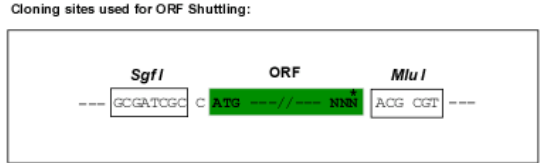
MKLNISFPATGCQKLIIEVDDERKLRTFYEKRMATEVAADALGEEWKGYVVRISGGNDKQGFPMKQGVLT  
 GRVRLLSKGHSCYRPRRTGERKRKSVRGCIVDANLSVLNLVIVKKGEDIPGLTDTTVPRRLGPKRASR  
 IRKLFNLSKEDDVRQYVVRKPLNKEGKKPRTKAPKIQRLVTPRVLQHKRRRIALKQRTKKNKEEAHEYA  
 KLLAKRMKEAKEKRQEIAKRRRLSSLRASTSKSESSQK

TRTRPLEQKLISEEDLAANDILDYKDDDDKV

**Chromatograms:** [https://cdn.origene.com/chromatograms/mm9076\\_b09.zip](https://cdn.origene.com/chromatograms/mm9076_b09.zip)

**Restriction Sites:** SgfI-MluI

**Cloning Scheme:**



\* The last codon before the Stop codon of the ORF

**ACCN:** NM\_009096

**ORF Size:** 747 bp

**OTI Disclaimer:** The molecular sequence of this clone aligns with the gene accession number as a point of reference only. However, individual transcript sequences of the same gene can differ through naturally occurring variations (e.g. polymorphisms), each with its own valid existence. This clone is substantially in agreement with the reference, but a complete review of all prevailing variants is recommended prior to use. [More info](#)

**OTI Annotation:** This clone was engineered to express the complete ORF with an expression tag. Expression varies depending on the nature of the gene.

**Components:** The ORF clone is ion-exchange column purified and shipped in a 2D barcoded Matrix tube containing 10ug of transfection-ready, dried plasmid DNA (reconstitute with 100 ul of water).

**Reconstitution Method:**

1. Centrifuge at 5,000xg for 5min.
2. Carefully open the tube and add 100ul of sterile water to dissolve the DNA.
3. Close the tube and incubate for 10 minutes at room temperature.
4. Briefly vortex the tube and then do a quick spin (less than 5000xg) to concentrate the liquid at the bottom.
5. Store the suspended plasmid at -20°C. The DNA is stable for at least one year from date of shipping when stored at -20°C.

**RefSeq:** [NM\\_009096.3](#), [NP\\_033122.1](#)

**RefSeq Size:** 1394 bp

**RefSeq ORF:** 750 bp

**Locus ID:** 20104

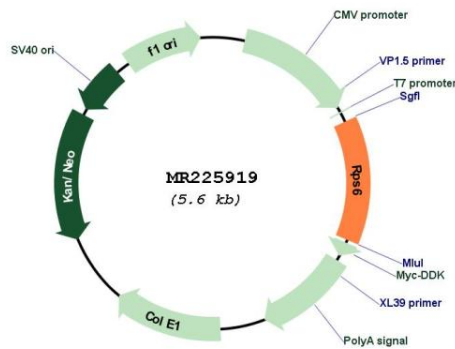
**UniProt ID:** [P62754](#)

**Cytogenetics:** 4 C4

**MW:** 28.7 kDa

**Gene Summary:** May play an important role in controlling cell growth and proliferation through the selective translation of particular classes of mRNA.[UniProtKB/Swiss-Prot Function]

### Product images:



Circular map for MR225919