

Product datasheet for **MR225912**

Fbln1 (NM_010180) Mouse Tagged ORF Clone

Product data:

Product Type:	Expression Plasmids
Product Name:	Fbln1 (NM_010180) Mouse Tagged ORF Clone
Tag:	Myc-DDK
Symbol:	Fbln1
Mammalian Cell Selection:	Neomycin
Vector:	pCMV6-Entry (PS100001)
E. coli Selection:	Kanamycin (25 ug/mL)



[View online »](#)

ORF Nucleotide Sequence:

>MR225912 representing NM_010180
 Red=Cloning site Blue=ORF Green=Tags(s)

TTTTGTAATACGACTCACTATAGGGCGGCCGGGAATTCGTCGACTGGATCCGGTACCGAGGAGATCTGCC
 GCC**CGCATCGCC**

ATGGAGCGCCCGTGCCGTCGCGCCTCGTCCCGCTGCCGCTGCTGCTCAGCAGCCTCTCGTGTGG
 CAGCCCGAGCGAATGCAGACATCTCCATGGAGGCTTGCTGCACGGATGGAAATCAGATGGCTAACCGCA
 CAGGGACTGCTCGCTGCCGTACACCTCAGAATCCAAGGAGTGCAGGATGGTCCAGGAGCAATGTTGTAC
 AACCAACTGGAAGAGCTGCACTGTGCCACGGGCATCAACCTGGCCAGCGAGCCAGAAGGCTGCGCCTCGC
 TCCACAGCTACAACAGTAGCCTTGAGACCATTTCATAAAGAGGTGCTGCCACTGTTGCATGCTGGGAAA
 GGCATCCCTGGCCGAGACCAGACCTGTGAACCCATTGTCATGATAAGCTACCAGTGTGGCTGGTGTTC
 CGTGCCTGCTGTGAAGGCCCGGAGAATTGAGACTTTGTCCAAGGCAACGGTGCAGACCTTCAGGACC
 CAGCTAAGATTCCTGACGAGGAGGACCAAGAAGACCCGTACCTGAATGACCGCTGTCGAGGTGGCGGCC
 CTGTAAGCAGCAGTGCCGTGACACTGGGGACGAGGTGATCTGCTCTTGTGGTGTGGGCTACCAGCTGCAG
 TCGGATGGTGTCTCTCGGAAGATATCAATGAATGCATCACAGGAGCCATAACTGCCGGCTGGGAGAAT
 CCTGCATCAATACAGTGGGCTCTTCCGCTGCCAGCGGGACAGCAGCTGTGGGACTGGCTATGAGCTCAC
 AGAGGATAATAACTGCAAGATATTGACGAATGTGAGACTGGTATTTCATAACTGCCCCCGGATTTTATC
 TGTGAGAACTCTGGGATCCTTCCGTTGCAGACCGAAGCTGCAGTGCAAGAGCGGCTTCATACAGGATG
 CTCTAGGCAACTGCATTGATATCAATGAGTGTGTTAAGTATCAGTGTCCATGCCCTGTGGGGCAGACATG
 CATCAATACAGAGGGCTCCTACACATGCCAGAAGAATGTGCCAACTGTGGCCGTGGTTATCATCTCAAT
 GAAGAGGGGACCCGCTGTGTTGATGTGGATGAGTGTCTCCACCGAGCGGACCCCTGTGGGAAGGGACACC
 ACTGCTGAACCTCCCCGGCAGCTTCCGCTGCGAGTGCAGGCTGCAAGGCTGGCTTCTATTTTGTGGCAGCAG
 GACCTGCGTGGATATCAACGAGTGCCAGCGCTATCCCGGGCGCCTGTGTGGCCACAAGTGTGAGAACACG
 CAGGCTCCTTCCACTGCAGCTGCTCCGCGGCTTCCGGCTGTCTGTGGACGGCCGGTCTTGTGAAGATG
 TGAACGAGTGTCTCAACAGCCCTTGACAGCAGGAGTGTGCTAATGTCTATGGCTCCTACCAGTGTATTG
 CCGACGAGGTTACCAGCTCAGTGACGTGGATGGGGTACCTGCGAAGATATTGATGAGTGTGCCCTGCC
 ACTGGAGGTCACATCTGCTCCTACCGCTGCATCAACATCCCCGGAAGCTTCCAGTGCAGCTGCCCTCAT
 CTGGCTACAGGCTAGCTCCCAATGGCCGCAACTGCCAAGACATTGATGAGTGTGTGACCGGCATCCATAA
 CTGTTCCATCAATGAGACTTGTCTCAACATCCAGGGCAGCTTCCGCTGTCTGTCCCTTGAATGCCCCGAG
 AACTATCGCCGCTCCGCAGACACCTTCCGCCAAGAGAAAACAGACACCGTCCGCTGCATCAAGTCTTGCC
 GTCCCAACGATGAGGCCTGCGTGCGGGACCTGTACATACCGTCTCCACACCGTCTCGCTGCCAC
 CTTTCGAGAGTTCACCCGCTCCTGAGGAGATCATCTTCTGAGGGCTGTACACCGCTGTACCCCGCAAC
 CAGGCCGACATCATCTTCGACATCACAGAAGGGAACCTTCGAGACTCCTTTGATATCATCAAGCGTATG
 AGGACGGCATGACTGTGGGTGTCGTGCGCAAGTGCGGCCATCGTGGGCCCGTTTTACGCTGTCCTGAA
 GCTGGAGATGAACACTCGTGTGGGAGGCGTAGTTTCCACCGAACGTCGTCAATGTACACATCTTCGTC
 TCCGAGTACTGGTTC

ACGCGTACGCGGCCGCTCGAGCAGAACTCATCTCAGAAGAGGATCTGGCAGCAAATGATATCCTGGATT
 ACAAGGATGACGACGATAAGGTTTAA

Protein Sequence: >MR225912 representing NM_010180
 Red=Cloning site Green=Tags(s)

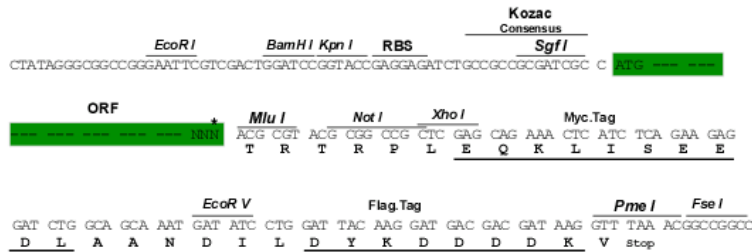
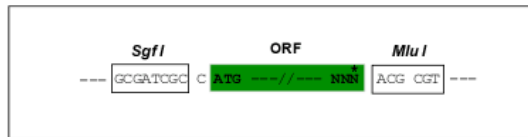
MERPVP SRLVPLPL LLLSSLSLLAARANADISMEACCTDGNQMANQHRDCSLPYTSESKECRMVQECCCH
 NQLEELHCATGINLASEPEGCASLHYSNSSLETIFIKRCHCCMLGKASLARDQTCEPIVMISYQCGLVF
 RACCVKARENSDFVQNGADLQDPAKIPDEEDQEDPYLNDRRCRGGGPKQQCRDTGDEVICSCFVGYQLQ
 SDGVSCEDINECITGSHNCRLGESCINTVGSFRCQRDSSCGTGYELTEDNNCKDIDECETGIHNCPPDFI
 CQNTLGSFRCRPLQCKSGFIQDALGNCIDINECLISAPCPVGTQTCINTEGSYTCQKNVPNCGRGYHLN
 EETRCDVDVDECSPPAEPCGKGGHCLNSPGSFRCECKAGFYFDGISRTCDVINECQRYPGRLCGHKCENT
 PGSFHCSCSAGFRLSVDGRSCEDVNECLNSPCSQECANVYGSYQCYCRRGYQLSDVDGVTCEIDECALP
 TGGHICSYRCINIPGSFQCSCPSSGYRLAPNGRNCQDIDECVTGIHNCINETCFNIQGSFRCLSFECPE
 NYRRSADTFRQEKDTRVRCIKSCRPNDEACVRDPVHTVSHTVISLPTFREFTRPEEIIIFLRAVTPLYPAN
 QADIIIFDITEGNLRDSFDIIKRYEDGMTVGVVRQVRPIVGPFFYAVLKLEMNYYLGGVVSHRNVVNVHIFV
 SEYWF

TRTRPLEQKLI SEEDLAANDILDYKDDDDKV

Restriction Sites: SgfI-MluI

Cloning Scheme:

Cloning sites used for ORF Shuttling:



* The last codon before the Stop codon of the ORF

ACCN: NM_010180

ORF Size: 2115 bp

OTI Disclaimer: The molecular sequence of this clone aligns with the gene accession number as a point of reference only. However, individual transcript sequences of the same gene can differ through naturally occurring variations (e.g. polymorphisms), each with its own valid existence. This clone is substantially in agreement with the reference, but a complete review of all prevailing variants is recommended prior to use. [More info](#)

OTI Annotation: This clone was engineered to express the complete ORF with an expression tag. Expression varies depending on the nature of the gene.

Components: The ORF clone is ion-exchange column purified and shipped in a 2D barcoded Matrix tube containing 10ug of transfection-ready, dried plasmid DNA (reconstitute with 100 ul of water).

Reconstitution Method:

1. Centrifuge at 5,000xg for 5min.
2. Carefully open the tube and add 100ul of sterile water to dissolve the DNA.
3. Close the tube and incubate for 10 minutes at room temperature.
4. Briefly vortex the tube and then do a quick spin (less than 5000xg) to concentrate the liquid at the bottom.
5. Store the suspended plasmid at -20°C. The DNA is stable for at least one year from date of shipping when stored at -20°C.

RefSeq: [NM_010180.2](#), [NP_034310.2](#)

RefSeq Size: 3359 bp

RefSeq ORF: 2118 bp

Locus ID: 14114

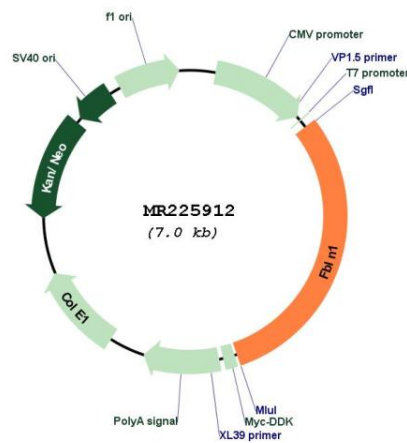
UniProt ID: [Q08879](#)

Cytogenetics: 15 E2

MW: 78.5 kDa

Gene Summary: Incorporated into fibronectin-containing matrix fibers. May play a role in cell adhesion and migration along protein fibers within the extracellular matrix (ECM). Could be important for certain developmental processes and contribute to the supramolecular organization of ECM architecture, in particular to those of basement membranes.[UniProtKB/Swiss-Prot Function]

Product images:



Circular map for MR225912