

Product datasheet for MR225901

Pla2g15 (NM_133792) Mouse Tagged ORF Clone

Product data:

Product Type:	Expression Plasmids
Product Name:	Pla2g15 (NM_133792) Mouse Tagged ORF Clone
Tag:	Myc-DDK
Symbol:	Pla2g15
Synonyms:	ACS; C87498; LLPL; Lpla2; Lypla3
Mammalian Cell Selection:	Neomycin
Vector:	pCMV6-Entry (PS100001)
E. coli Selection:	Kanamycin (25 ug/mL)
ORF Nucleotide Sequence:	>MR225901 representing NM_133792 Red=Cloning site Blue=ORF Green=Tags(s)

TTTTGTAATACGACTCACTATAGGGCGCCGGGAATTCGTCGACTGGATCCGGTACCGAGGAGATCTGCC
GCC**CGATCGCC**

ATGGATCGCCATCTCTGCACCTGTCGGAGACCCAGCTCCGGAGTGGCCTCCTGTTACCTCTGTTTCTAC
TAATGATGCTGGCAGACCTGACGCTCCCGGCCAACGTCACCCCGGTGGTGTGGTGCCTGGTGATT
GGGTAACCAAGTTGGAAGCAAAGCTGGATAAGCCAAAGTTGTACACTACCTTTGCTCCAAGAAGACGGAC
AGCTACTTCACACTCTGGCTGAATCTGGAAGTCTTCTGCCTGTTATCATTGACTGCTGGATTGACAATA
TCAGGCTGGTTACAACAGAACATCTCGGGCCACCCAGTTTCCCGATGGTGTGGACGTGCGTGTCCCTGG
CTTTGGGGAAACATTTTCTATGGAATTCCTAGACCCAGCAAGAGGAATGTGGGTTCCATTTCTACACT
ATGGTGGAGAGCCTTGTGGGCTGGGGCTACACACGGGGTGAAGACGTTTCGAGGTGCTCCCTATGATTGGC
GGCGAGCCCAATGAAAACGGGCCCTACTTCTGGCCCTGCGAGAGATGATCGAGGAGATGTACCAGAT
GTATGGGGGCCCGTGGTGTGCTGGTCGCCACAGCATGGGCAACGTGTACATGCTCTACTTTCTGCAGCGG
CAGCCACAAGTCTGGAAGGACAAATATATCCATGCCTTCGTCTCACTGGGGGCCCTGGGGGGCGTGG
CCAAGACGCTGCGTGTCTGGCCTCAGGAGACAACAATCGCATTCCCGTCATTGGGCCACTGAAGATCCG
GGAACAGCAGCGATCTGCCGTCTCTACCAGCTGGCTACTGCCATACAACCACACTTGGTCACATGAAAAG
GTATTTGTATACACACCCACGACTAACTACACGCTCCGGGACTACACCGTTCTTCCGGGACATCGGTT
TCGAAGATGGCTGGTTTCATGCGGCAGGACACAGAAGGGCTGGTTGAAGCCATGACGCCACCCGGGGTGG
GCTGCACTGCTTGTATGGCACTGGTGTCCACGCCAAACTCTTTCTACTACGAGAGCTTTCCTGATCGG
GACCCCAAAATCTGCTTCGGCGATGGTACGGCACGGTGAACCTGGAGAGCGTCTGCAGTGCCAAGCCT
GGCAGAGCCGCAAGAGCACAGAGTATCATTGCAGGAGCTGCCGGGAAGCGAGCACATTGAGATGCTAGC
CAATGCCACCACCTTGGCTTATCTGAAACGTGTGCTTCTGGAACCT

ACGCGTACGCGGCCGCTCGAGCAGAAACTCATCTCAGAAGAGGATCTGGCAGCAAATGATATCCTGGATT
ACAAGGATGACGACGATAAGGTTTAA



Protein Sequence: >MR225901 representing NM_133792

Red=Cloning site Green=Tags(s)

MDRHLCTCRETQLRSGLLLPLFLLMMLADLTLPQRHPPVVLVPGDLGNQLEAKLDKPKVVHYLCSKKT
 SYFTLWLNLELLLPVIIDCWIDNIRLVYNRTSRATQFDGVDVVPVGFGETFSMEFLDPSKRNVGSYFY
 MVESLVGWGYTRGEDVRGAPYDWRRAPNENGPYFLALREMIIEEMYQMYGGPVVLVAHSMGNVYMLYFLQ
 RQPVWVKDKYIHAFVSLGAPWGGVAKTLRVLASGDNNRIPVIGPLKIREQQRSAVSTSWLLPYNHTWSHEK
 VFVYPTTNYTLRDYHRFFRDIGFEDGWFMRQDTEGLVEAMTPPGVELHCLYGTGPVTPNSFYYESFPDR
 DPKICFGDGDGTVNLESVLQCQAWQSRQEHRVSLQELPGSEHIELANATTLAYLKRVLLLEP

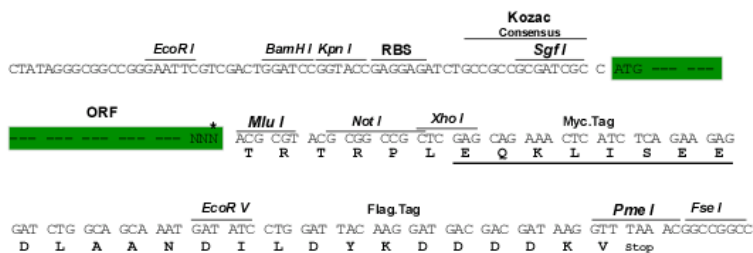
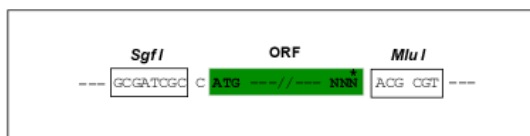
TRTRPLEQKLISEEDLAANDILDYKDDDDKV

Chromatograms: https://cdn.origene.com/chromatograms/mm9008_a05.zip

Restriction Sites: SgfI-MluI

Cloning Scheme:

Cloning sites used for ORF Shuttling:



* The last codon before the Stop codon of the ORF

ACCN: NM_133792

ORF Size: 1236 bp

OTI Disclaimer: The molecular sequence of this clone aligns with the gene accession number as a point of reference only. However, individual transcript sequences of the same gene can differ through naturally occurring variations (e.g. polymorphisms), each with its own valid existence. This clone is substantially in agreement with the reference, but a complete review of all prevailing variants is recommended prior to use. [More info](#)

OTI Annotation: This clone was engineered to express the complete ORF with an expression tag. Expression varies depending on the nature of the gene.

Components: The ORF clone is ion-exchange column purified and shipped in a 2D barcoded Matrix tube containing 10ug of transfection-ready, dried plasmid DNA (reconstitute with 100 ul of water).

Reconstitution Method:

1. Centrifuge at 5,000xg for 5min.
2. Carefully open the tube and add 100ul of sterile water to dissolve the DNA.
3. Close the tube and incubate for 10 minutes at room temperature.
4. Briefly vortex the tube and then do a quick spin (less than 5000xg) to concentrate the liquid at the bottom.
5. Store the suspended plasmid at -20°C. The DNA is stable for at least one year from date of shipping when stored at -20°C.

RefSeq: [NM_133792.3](#)

RefSeq Size: 2721 bp

RefSeq ORF: 1239 bp

Locus ID: 192654

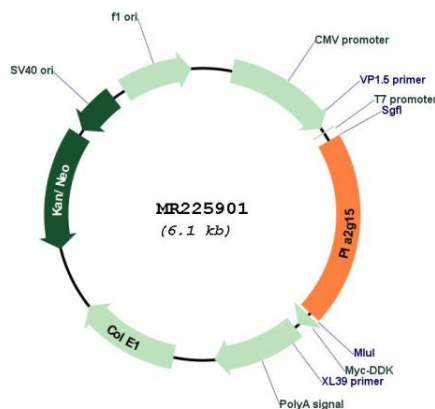
UniProt ID: [Q8VEB4](#)

Cytogenetics: 8 D3

MW: 47.8 kDa

Gene Summary: Has transacylase and calcium-independent phospholipase A2 activity. Catalyzes the formation of 1-O-acyl-N-acetylsphingosine and the concomitant release of a lyso-phospholipid (PubMed:11790796, PubMed:16106046, PubMed:16880524, PubMed:19017977, PubMed:20410020). Has high activity with 1-palmitoyl-2-oleoyl-sn-glycero-3-phosphocholine (POPC) and 1,2-dioleoyl-sn-glycero-3-phosphocholine (DOPC), catalyzing the transfer of oleic acid to N-acetyl-sphingosine (PubMed:16880524). Required for normal phospholipid degradation in alveolar and peritoneal macrophages and in spleen (PubMed:16880524, PubMed:19017977).[UniProtKB/Swiss-Prot Function]

Product images:



Circular map for MR225901