

## Product datasheet for **MR225846**

### Prkd1 (NM\_008858) Mouse Tagged ORF Clone

#### Product data:

Product Type:	Expression Plasmids
Product Name:	Prkd1 (NM_008858) Mouse Tagged ORF Clone
Tag:	Myc-DDK
Symbol:	Prkd1
Synonyms:	Pkcm; PKD; PKD1; Prkcm
Mammalian Cell Selection:	Neomycin
Vector:	pCMV6-Entry (PS100001)
E. coli Selection:	Kanamycin (25 ug/mL)



[View online »](#)

**ORF Nucleotide Sequence:**

>MR225846 representing NM\_008858  
 Red=Cloning site Blue=ORF Green=Tags(s)

TTTTGTAATACGACTCACTATAGGGCGGCCGGGAATTCGTCGACTGGATCCGGTACCGAGGAGATCTGCC  
 GCC**CGCATCGCC**

ATGAGCGTCCCTCCGCTGCTGCGACCGCTAGCCCGCTCTGCCCGCGGGCCGCGTGGCTGCTGCCG  
 CCGCTGCGCTGGTCCCAGGCTCCGGGCCCGCGCCCTTCCGCGCGCTGGGCGCGCCCGGGGGGCAT  
 CTGTTCCATCTGCAGATCGGCCTGAGCCGCGAGCCGGTCTGCTCCTGCAGGACTCCTCTGGCGACTAC  
 AGCCTGGCGCATGTCGGGAGATGGCTTGTTCATCGTGGACCAGAAGTCCCGAATGTGGTTTCTATG  
 GACTCTATGATAAGATCCTGCTTTTTCGGCAGCATCCTGCCTCCGACAACATCCTCAGCTGGTAAAT  
 CGCAAGTGATATCCAGGAGGGTATCTCATTGAAGTGGTCTGTCAGCTTCAGCCACCTTCGAAGACTTC  
 CAGATCCGGCCCCATGCTCTCTTCGTTTCATTACACAGAGCCCCAGCTTCTGTGATCACTGTGGAGAAA  
 TGCTGTGGGGCTGGTGCCTCAAGGCCATAAATGTGAAGGATGTGGTCTGAATTACCATAAGAGATGTGC  
 ATTTAAAAATCCCAACAATTGCAGTGGAGTTAGAAGGAGAAGACTCTCCAATGTGTCCTCACTGGACTC  
 GGTAATGTCCGCACAGCATCGGCTGAGTTCCTCCACAGTGTCCCTGATGAGCCTTACTGTCTCCTGTGA  
 GCCCTGGCTTTGAGCAAAAGTCTCCATCTGAGTCAATTCGCGCCGTGAGAAGAGGTCAAATTCGAGTC  
 ATACATCGGACGGCCGATTACGCTCGACAAGCTCCTGATGTCTAAGGTGAAGGTGCCACACACCTTTGTC  
 ATCCACTCCTACACACGGCCACGGTCTGCCAGTTCGTGAAGAAGCTCCTCAAGGCGCTTTCGGCAGG  
 GCTTGCAGTGCAAAGATTGCAGATCAACTGTCACAAACGCTGCGCACCAAAAGTACCAACAACCTGCTT  
 GGGTGAAGTGACCATCAATGGAGAATTACTTAGCCCTGGTGCAGAATCTGATGTTGTTATGGAAGAAGGG  
 AGTGATGACAATGACAGTGAGCGGAACAGTGGGCTCATGGATGACATGGACGAGGCCATGGTCCAAGATA  
 CTGAGATGGCTTTGGCAGAGGGCCAGAGTGGAGGTGCAGAGATGCAAGATCCAGATGCAGACCAGGAGGA  
 CTCCAACAGAACCATCAGCCCTTCAACGAGCAACAACATCCCGCTCATGAGGGTAGTGCAGTCTGTGAAG  
 CACACGAAGCGGAGGAGCAGCACTGTGATGAAGGAAGGGTGGATGGTCCACTACACCAGCAAGGACACAC  
 TGCGGAAAAGGCACTACTGGAGATTGGACAGCAATGCATAAACTCTTCCAAAATGACACAGGGAGCCG  
 GTACTACAAGGAAATTCCTTTATCAGAAAATATTATGTCTGGAACAGCAAAACCTTCAGCTTTAACTCCC  
 GTTGGAGCGACTCCTCATTGTTTTGAAATCACTACAGCGAATGTAGTGTATTATGTGGGAGAAAACGTGG  
 TTAACCCATCAAGTTCACCAAAACAACAGTGTCTCCCGAGTGGCATCGG[AT]CCGGATGTGGCCAG  
 GATGTGGGAGGTGGCCATCCAGCATGCTCTTATGCCCGTCATCCCAAGGGCTCCTCTGTGGCTCCGGA  
 TCCAACACACAAAAGATATTTCTGTGAGCATTCCGTTTCAAATGCCAGATTCAGGAAAATGTGGATA  
 TCAGCACAGTCTATCAAATATTTCTGATGAAGTCTGGGTTCCGACAGTTTGAATTGTTTATGGAGG  
 TAAACATCGTAAAACAGGAAGAGATGTAGCTATTAAGATTATTGACAAAATTAAGATTTCTACAAAACA  
 GAAAGTCAGCTTCGTAATGAGGTTGCAATTTTACAGAACCTTCATCACCTGGTGTGTAATTTGGAGT  
 GTATGTTTGAGACGCCTGAAAGAGTGTGTTGTTATGAAAAAATCCATGGAGACATGTGGAGATGAT  
 CTTGTCAAGTAAAAGGGCAGGTTGCCAGAACACATAACGAAGTTTTTAATTACTCAGATACTAGTGGCT  
 TTGCGACATCTCATTAAAAACATCGTTCAGTGTGACCTCAAGCCAGAAAATGTGTTGCTGGCATCAG  
 GAGGTCAAGTGGTGGTACCCAGCATACCTGGCACCTGAAGTTCGAGGAACAAGGGCTATAAACCCTCT  
 CTGGACATGTGGTCTGTTGGGTCATCATCTATGTGAGCCTGAGTGGTACCTTCCCTTTAATGAAGATG  
 AAGATATCCATGATCAGATCCAGAAATGCAGCCTTCATGTATCCACCAACCCGTGAAGGAGATTCTCA  
 TGAAGCCATTGATCTTATCAATAACTTGCTACAAGTAAAATGAGAAAACGCTACAGTGTGGATAAAACC  
 TTGAGTACCCTTGCTACAGGACTATCAGACCTGGTTAGATTTACGAGAGCTGGAATGCAGAAATGGAG  
 AACGCTATATTACCCACGAAAGCGATGACTCCAGGTGGGAACAGTACGACGGCAGCAGGGGCTGCAGTA  
 CCCGGCGCACCTGATCAGTCTGAGTGTAGCCACAGCGACAGTCTGAGGCTGAAGAGAGAGAGATGAAA  
 GCCCTCAGTGAGCGTGTACAGATCCTC

**ACGCGT**ACGCGGCCGCTCGAGCAGAACTCATCTCAGAAGAGGATCTGGCAGCAAATGATATCCTGGATT  
 ACAAGGATGACGACGATAAGGTTTAA

**Protein Sequence:** >MR225846 representing NM\_008858  
 Red=Cloning site Green=Tags(s)

```
MSVPPLLPPSPLLPAAAVAAAAAALVPGSGPAPFPAPGAAPAGGISFHLQIGLSREPVLQLQDSSGDY
SLAHVREMACSIVDQKFPECGFYGLYDKILLFRHDPASDNILQLVKIASDIQEGDLIEVVLASATFEDF
QIRPHALFVHSYRAPAFCDHCGEMLWGLVRQGLKCEGCLNYHKRCAFKIPNNCSGVRRRRLSNVSLTGL
GTVRTASAEFSTSVDPDEPLLSPVSPGFQKSPSESFIGREKRSNSQSYIGRPIQLDKLLMSKVKVPHTFV
IHSYTRPTVCQFCCKLLKGLFRQGLQCKDCRFNCHKRCAPKVPNNCLGEVTINGELLSPGAESDVVMEEG
SDDNDSENRNGLMDDMEAMVQDTEMALAEQSGGAEMQDPDADQEDSNRTISPSTSNINPLMRVVQSVK
HTKRRSSTVMKEGWMVHYTSKDTLRKRHYWRLDSKCITLQNDTGSRYKEIPLSEILCLEPAKPSALTP
VGATPHCFEITANVVVVYGENVVNPSPPNNSVLPXIXPDVARMWEVAIQHALMPVIPKGSSVSGS
SNSHKDISVSVSNQCQIENVDISTVYQIFPDEVLGSGQFGIVYGGKHKRKTGRDVAIKIIDKLRFPKQ
ESQLRNEVAILQNLHHPGVVNLECMFETPERVFMVMEKLGDMLEMLLSSEKGRLEPHITKFLITQILVA
LRHLHFKNIVHCDLKPENVLLASADFPQVKLCDFGFARIDGEKSFRRSVVGTAYLAPEVLRNKGYNRS
LDMWSVGVIIVVSLSGTFPFNEDEDIHDQIQNAAFMYPNPWKEISHEAIDLINLLQVKMRKRYSDKT
LSPWLQDYQTWLDLRELECRIGERYITHESDDSRWEQYAGEQGLQYPAHLISLSASHSDSPEAEEREMK
ALSERSVIL
```

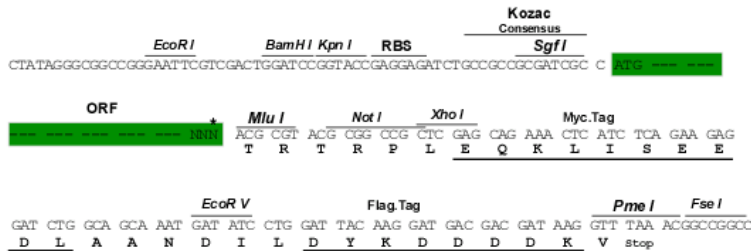
TRTRPLEQKLISEEDLAANDILDYKDDDDKV

**Chromatograms:** [https://cdn.origene.com/chromatograms/mm9009\\_d10.zip](https://cdn.origene.com/chromatograms/mm9009_d10.zip)

**Restriction Sites:** SgfI-MluI

**Cloning Scheme:**

Cloning sites used for ORF Shuttling:



\* The last codon before the Stop codon of the ORF

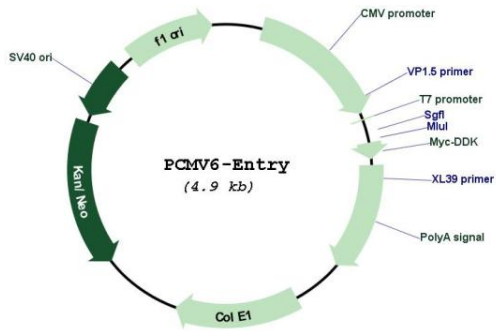
**ACCN:** NM\_008858

**ORF Size:** 2757 bp

<b>OTI Disclaimer:</b>	The molecular sequence of this clone aligns with the gene accession number as a point of reference only. However, individual transcript sequences of the same gene can differ through naturally occurring variations (e.g. polymorphisms), each with its own valid existence. This clone is substantially in agreement with the reference, but a complete review of all prevailing variants is recommended prior to use. <a href="#">More info</a>
<b>OTI Annotation:</b>	This clone was engineered to express the complete ORF with an expression tag. Expression varies depending on the nature of the gene.
<b>Components:</b>	The ORF clone is ion-exchange column purified and shipped in a 2D barcoded Matrix tube containing 10ug of transfection-ready, dried plasmid DNA (reconstitute with 100 ul of water).
<b>Reconstitution Method:</b>	<ol style="list-style-type: none"> <li>1. Centrifuge at 5,000xg for 5min.</li> <li>2. Carefully open the tube and add 100ul of sterile water to dissolve the DNA.</li> <li>3. Close the tube and incubate for 10 minutes at room temperature.</li> <li>4. Briefly vortex the tube and then do a quick spin (less than 5000xg) to concentrate the liquid at the bottom.</li> <li>5. Store the suspended plasmid at -20°C. The DNA is stable for at least one year from date of shipping when stored at -20°C.</li> </ol>
<b>RefSeq:</b>	<a href="#">NM_008858.1</a> , <a href="#">NM_008858.2</a> , <a href="#">NM_008858.3</a> , <a href="#">NP_032884.2</a>
<b>RefSeq Size:</b>	3778 bp
<b>RefSeq ORF:</b>	2757 bp
<b>Locus ID:</b>	18760
<b>UniProt ID:</b>	<a href="#">Q62101</a>
<b>Cytogenetics:</b>	12 B3
<b>MW:</b>	102.5 kDa
<b>Gene Summary:</b>	Serine/threonine-protein kinase that converts transient diacylglycerol (DAG) signals into prolonged physiological effects downstream of PKC, and is involved in the regulation of MAPK8/JNK1 and Ras signaling, Golgi membrane integrity and trafficking, cell survival through NF-kappa-B activation, cell migration, cell differentiation by mediating HDAC7 nuclear export, cell proliferation via MAPK1/3 (ERK1/2) signaling, and plays a role in cardiac hypertrophy, VEGFA-induced angiogenesis, genotoxic-induced apoptosis and flagellin-stimulated inflammatory response. Phosphorylates the epidermal growth factor receptor (EGFR) on dual threonine residues, which leads to the suppression of epidermal growth factor (EGF)-induced MAPK8/JNK1 activation and subsequent JUN phosphorylation. Phosphorylates RIN1, inducing RIN1 binding to 14-3-3 proteins YWHAB, YWHAE and YWHAZ and increased competition with RAF1 for binding to GTP-bound form of Ras proteins (NRAS, HRAS and KRAS). Acts downstream of the heterotrimeric G-protein beta/gamma-subunit complex to maintain the structural integrity of the Golgi membranes, and is required for protein transport along the secretory pathway. In the trans-Golgi network (TGN), regulates the fission of transport vesicles that are on their way to the plasma membrane. May act by activating the lipid kinase phosphatidylinositol 4-kinase beta (PI4KB) at the TGN for the local synthesis of phosphorylated inositol lipids, which induces a sequential production of DAG, phosphatidic

acid (PA) and lyso-PA (LPA) that are necessary for membrane fission and generation of specific transport carriers to the cell surface. Under oxidative stress, is phosphorylated at Tyr-469 via SRC-ABL1 and contributes to cell survival by activating IKK complex and subsequent nuclear translocation and activation of NFKB1. Involved in cell migration by regulating integrin alpha-5/beta-3 recycling and promoting its recruitment in newly forming focal adhesion. In osteoblast differentiation, mediates the bone morphogenetic protein 2 (BMP2)-induced nuclear export of HDAC7, which results in the inhibition of HDAC7 transcriptional repression of RUNX2. In neurons, plays an important role in neuronal polarity by regulating the biogenesis of TGN-derived dendritic vesicles, and is involved in the maintenance of dendritic arborization and Golgi structure in hippocampal cells. May potentiate mitogenesis induced by the neuropeptide bombesin or vasopressin by mediating an increase in the duration of MAPK1/3 (ERK1/2) signaling, which leads to accumulation of immediate-early gene products including FOS that stimulate cell cycle progression. Plays an important role in the proliferative response induced by low calcium in keratinocytes, through sustained activation of MAPK1/3 (ERK1/2) pathway. Downstream of novel PKC signaling, plays a role in cardiac hypertrophy by phosphorylating HDAC5, which in turn triggers XPO1/CRM1-dependent nuclear export of HDAC5, MEF2A transcriptional activation and induction of downstream target genes that promote myocyte hypertrophy and pathological cardiac remodeling. Mediates cardiac troponin I (TNNI3) phosphorylation at the PKA sites, which results in reduced myofilament calcium sensitivity, and accelerated crossbridge cycling kinetics. The PRKD1-HDAC5 pathway is also involved in angiogenesis by mediating VEGFA-induced specific subset of gene expression, cell migration, and tube formation. In response to VEGFA, is necessary and required for HDAC7 phosphorylation which induces HDAC7 nuclear export and endothelial cell proliferation and migration. During apoptosis induced by cytarabine and other genotoxic agents, PRKD1 is cleaved by caspase-3 at Asp-378, resulting in activation of its kinase function and increased sensitivity of cells to the cytotoxic effects of genotoxic agents. In epithelial cells, is required for transducing flagellin-stimulated inflammatory responses by binding and phosphorylating TLR5, which contributes to MAPK14/p38 activation and production of inflammatory cytokines.

Product images:



Circular map for MR225846