

Product datasheet for **MR225747**

Plau (NM_008873) Mouse Tagged ORF Clone

Product data:

Product Type:	Expression Plasmids
Product Name:	Plau (NM_008873) Mouse Tagged ORF Clone
Tag:	Myc-DDK
Symbol:	Plau
Synonyms:	u-PA; uPA
Mammalian Cell Selection:	Neomycin
Vector:	pCMV6-Entry (PS100001)
E. coli Selection:	Kanamycin (25 ug/mL)



[View online »](#)

ORF Nucleotide Sequence:

>MR225747 representing NM_008873
 Red=Cloning site Blue=ORF Green=Tags(s)

CTATAGGGCGGCCGGAATTCGTCGACTGGATCCGGTACCGAGGAGATCTGCC
 GCC**CGCATCGCC**

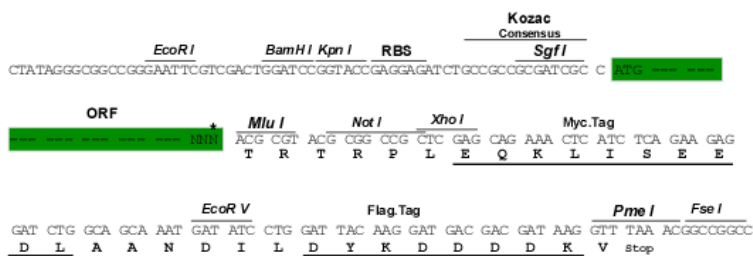
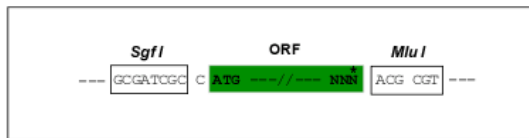
ATGAAAGTCTGGCTGGCGAGCCTGTTCTCTGCGCCTTGGTGGTAAAACTCTGAAGTGGCAGTGTAC
 TTGGAGCTCCTGATGAATCAAACGTGGCTGTGAGAACGGAGGTATGCGGTGCTCACAAGTACTTCTC
 CAGAATTCGCCGATGCAGCTGCCAAGGAAATTCAGGGGAGCACTGTGAGATAGATGCATCAAAAACC
 TGCTATCATGAAATGGTACTCTTACCAGGAAAGGCCAACACTGATACCAAAGGTGGCCCTGCCTGG
 CCTGGAATGCGCCTGCTGTCTTCCAGAAACCTACAATGCCACAGACCTGATGCTATTAGCCTAGGCC
 GGGGAAACACAATTACTGCAGGAACCTGACAACCAGAAGCGACCTGGTGTATGTGCAGATTGCCTA
 AGGCAGTTTGTCCAAGAATGCATGGTGCATGACTGCTCTTAGCAAAAAGCCTTCTTCGTCTGTAGACC
 AACAGGCTTCCAGTGTGGCCAGAAGGCTTAAGCCCGCTTTAAGATTGTTGGGGGAGAATTCAGTGA
 GGTGGAGAACCAGCCCTGGTTCGACGCCATCTACCAGAAGAACAAGGGAGGAAGTCTCCCTCCTTAA
 TGTGGTGGGAGTCTCATCAGTCCTTGTGGGTGGCCAGTCCCGCACACTGCTTCACTCCCAAAGA
 AGGAAAACACTACGTTGTCTACCTGGTCAAGGAGAGCTCCTATAATCCTGGAGAGATGAAGTTTGA
 GGTGGAGCAGCTCATCTTGCACGAATACTACAGGGAAGACAGCCTGGCCTACCATAATGATATGCCTTG
 CTGAAGATACGTACCAGCACGGGCAATGTGCACAGCCATCCAGGTCCATACAGACCATCTGCCTGCCCC
 CAAGGTTTACTGATGCTCCGTTTGGTTCAGACTGTGAGATCACTGGCTTTGAAAAAGAGTCTGAAAGTGA
 CTATCTCTATCCAAGAACCTGAAAATGTCGTCGTAAGCTTGTTCATGAACAGTGTATGCAGCCC
 CACTACTATGGCTCTGAAATTAATAAAAATGCTGTGTGCTGCGGACCCAGAGTGGAAAACAGATTCT
 GCAAGGGCGATTCTGGAGACCGCTTATCTGTAACATCGAAGGCCGCCAACTCTGAGTGGGATTGTGAG
 CTGGGGCCGAGGATGTGCAGAGAAAAACAAGCCGGTGTCTACACGAGGGTCTCACACTTCTGGACTGG
 ATTCAATCCCACATTGGAGAAGAGAAAGTCTGGCCTTC

ACGCGTACGCGGCCGCTCGAGCAGAAACTCATCTCTGAAGAGGATCTGGCAGCAAATGATATCCTGGATT
ACAAGGATGACGACGATAAGGTTTAA

Restriction Sites:
 Cloning Scheme:

SgfI-MluI

Cloning sites used for ORF Shuttling:



* The last codon before the Stop codon of the ORF

ACCN:

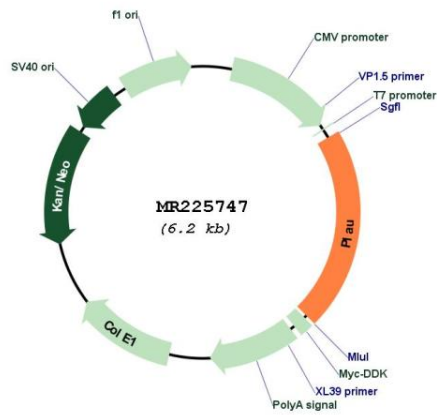
NM_008873

ORF Size:

1299 bp

OTI Disclaimer:	The molecular sequence of this clone aligns with the gene accession number as a point of reference only. However, individual transcript sequences of the same gene can differ through naturally occurring variations (e.g. polymorphisms), each with its own valid existence. This clone is substantially in agreement with the reference, but a complete review of all prevailing variants is recommended prior to use. More info
OTI Annotation:	This clone was engineered to express the complete ORF with an expression tag. Expression varies depending on the nature of the gene.
Components:	The ORF clone is ion-exchange column purified and shipped in a 2D barcoded Matrix tube containing 10ug of transfection-ready, dried plasmid DNA (reconstitute with 100 ul of water).
Reconstitution Method:	<ol style="list-style-type: none">1. Centrifuge at 5,000xg for 5min.2. Carefully open the tube and add 100ul of sterile water to dissolve the DNA.3. Close the tube and incubate for 10 minutes at room temperature.4. Briefly vortex the tube and then do a quick spin (less than 5000xg) to concentrate the liquid at the bottom.5. Store the suspended plasmid at -20°C. The DNA is stable for at least one year from date of shipping when stored at -20°C.
RefSeq:	NM_008873.3 , NP_032899.1
RefSeq Size:	2343 bp
RefSeq ORF:	1302 bp
Locus ID:	18792
UniProt ID:	P06869
Cytogenetics:	14 11.53 cM
MW:	48.7 kDa
Gene Summary:	Specifically cleaves the zymogen plasminogen to form the active enzyme plasmin. [UniProtKB/Swiss-Prot Function]

Product images:



Circular map for MR225747